

# E-Mini Master Class

Clueless to Confident

So that you can be cool calm and collected and work on being consistent

# Hubert Emini Playbook

# Economic News Release

Econoday

<https://us.econoday.com/>

Forex Factory

<https://www.forexfactory.com/calendar>

UPCOMING  
US ANNOUNCEMENTS

-  8:30 AM - 26 Sep  
**US:Durable Goods Orders**
-  8:30 AM - 26 Sep  
**US:GDP**
-  8:30 AM - 26 Sep  
**US:Jobless Claims**
-  8:30 AM - 26 Sep  
**US:Corporate Profits**
-  9:10 AM - 26 Sep  
**US:Speech**

 [VIEW FULL CALENDAR](#)

UPCOMING  
GLOBAL ANNOUNCEMENTS

-  8:30 AM - 26 Sep  
**US:Durable Goods Orders**
-  8:30 AM - 26 Sep  
**US:GDP**
-  8:30 AM - 26 Sep  
**US:Jobless Claims**
-  8:30 AM - 26 Sep  
**US:Corporate Profits**
-  10:00 AM - 26 Sep  
**US:Pending Home Sales Index**

 [VIEW FULL CALENDAR](#)

Monday Sep 23

Global  
Economics »

Market  
Reflections »

Raphael Bostic  
Speaks  
8:00 AM ET

Chicago Fed  
National Activity  
Index  
R •  
8:30 AM ET

PMI Composite  
Flash  
R •  
9:45 AM ET

Austan  
Goolsbee  
Speaks  
10:15 AM ET

Treasury

Tuesday Sep 24

Market  
Reflections »

4-Week Bill  
Settlement

8-Week Bill  
Settlement

4-Month Bill  
Settlement

Case-Shiller  
Home Price  
Index  
R •

9:00 AM ET

Michelle  
Bowman Speaks  
9:00 AM ET

FHFA House  
Price Index  
R •  
9:00 AM ET

Wednesday Sep 25

Market  
Reflections »

MBA Mortgage  
Applications  
R • 7:00 AM ET

New Home Sales  
R •  
10:00 AM ET

EIA Petroleum  
Status Report  
R •  
10:30 AM ET

Treasury Buyback  
Announcement  
R E  
11:00 AM ET

Survey of Business  
Uncertainty  
R • 11:00 AM ET

4-Month Bill Auction  
R 11:30 AM ET

Thursday Sep 26

## Journal Pre-Order



### Market Focus »

3-Month Bill Settlement

6-Month Bill Settlement

Durable Goods Orders  
C • 8:30 AM ET

GDP  
C • 8:30 AM ET

Jobless Claims  
C • 8:30 AM ET

Corporate Profits

Friday Sep 27

International  
Trade in Goods  
(Advance)  
C •  
8:30 AM ET

Personal Income  
and Outlays  
C •  
8:30 AM ET

Retail Inventories  
(Advance)  
• 8:30 AM ET

Wholesale  
Inventories  
(Advance)  
C • 8:30 AM ET

Consumer  
Sentiment  
C •  
10:00 AM ET

Baker Hughes  
Rig Count



Market  
Moving  
Indicators



Merit Extra  
Attention



Other Key  
Indicators



Consensus Info Available



Final Data and Analysis Available

Navigation

<< < Sep 2024 >

S	M	T	W	T	F	S
> 1	2	3	4	5	6	7
> 8	9	10	11	12	13	14
> 15	16	17	18	19	20	21
> 22	23	24	25	26	27	28
> 29	30	1	2	3	4	5

Today Tomorrow  
 This Week Next Week  
 This Month Next Month

Yesterday > Up Next  
 Last Week  
 Last Month

Metals Calendar  
 Energy Calendar  
 Crypto Calendar



**Trade with the No.1 US Broker for active Forex accounts\***

And get a welcome bonus\*

**Learn more**

\*Based on published RFED data. 2023.  
 \*\*Terms apply. Opt-in required.  
 \*\*\*Trade and deposit minimums must be met. Limited to 1 per household. Sign up by 31 October 2024. See EFT-Ex

This Week: Sep 22 - Sep 28 Up Next Search Events Filter

Date	6:23am	Currency	Impact	Detail	Actual	Forecast	Previous	Graph
Sun Sep 22	6:45pm	NZD	🟡	Trade Balance	-2203M	-155M	-1016M	
	7:00pm	AUD	🟡	Flash Manufacturing PMI	46.7		48.5	
		AUD	🟡	Flash Services PMI	50.6		52.5	
	All Day	JPY	🟡	Bank Holiday				
Mon Sep 23	3:15am	EUR	🔴	French Flash Manufacturing PMI	44.0	44.3	43.9	
		EUR	🔴	French Flash Services PMI	48.3	53.0	55.0	
	3:30am	EUR	🔴	German Flash Manufacturing PMI	40.3	42.4	42.4	
		EUR	🔴	German Flash Services PMI	50.6	51.1	51.2	
	4:00am	EUR	🟡	Flash Manufacturing PMI	44.8	45.7	45.8	
		EUR	🟡	Flash Services PMI	50.5	52.3	52.9	
	4:30am	GBP	🔴	Flash Manufacturing PMI	51.5	52.3	52.5	
		GBP	🔴	Flash Services PMI	52.8	53.5	53.7	
	6:00am	GBP	🟡	CBI Industrial Order Expectations	-35	-23	-22	
	8:00am	USD	🟡	FOMC Member Bostic Speaks				
	8:10am	USD	🟡	FOMC Member Kashkari Speaks				
	8:30am	CAD	🟡	NHPI m/m	0.0%	0.1%	0.2%	
	9:45am	USD	🔴	Flash Manufacturing PMI	47.0	48.6	47.9	
		USD	🔴	Flash Services PMI	55.4	55.3	55.7	
10:15am	USD	🟡	FOMC Member Goolsbee Speaks					
1:00pm	USD	🟡	FOMC Member Kashkari Speaks					
8:30pm	JPY	🟡	Flash Manufacturing PMI	49.6	49.9	49.8		
Tue Sep 24	12:30am	AUD	🔴	Cash Rate	4.35%	4.35%	4.35%	
		AUD	🔴	RBA Rate Statement				
	1:05am	JPY	🔴	BOJ Gov Ueda Speaks				
	1:30am	AUD	🟡	RBA Press Conference				
	4:00am	EUR	🟡	German ifo Business Climate	85.4	86.1	86.6	
8:57am	EUR	🟡	Belgian NBB Business Climate	-13.3	-12.3	-12.6		

Navigation

<< Sep 2024 >>

S	M	T	W	T	F	S
>	1	2	3	4	5	6
>	8	9	10	11	12	13
>	15	16	17	18	19	20
>	22	23	24	25	26	27
>	29	30	1	2	3	4

Today Tomorrow  
 This Week Next Week  
 This Month Next Month

Yesterday Up Next  
 Last Week  
 Last Month

Metals Calendar  
 Energy Calendar  
 Crypto Calendar



**Trade with the No.1 US Broker for active Forex accounts\***

And get a welcome bonus^

Learn more

This Week: Sep 22 - Sep 28 Up Next Search Events Filter

**Expected Impact** (all, none)

**Event Types** (all, none)

Growth  Housing  
 Inflation  Consumer Surveys  
 Employment  Business Surveys  
 Central Bank  Speeches  
 Bonds  Misc

**Currencies** (all, none)

AUD  
 CAD  
 CHF  
 CNY  
 EUR  
 GBP  
 JPY  
 NZD  
 USD

Default View: This Week

Apply Filter Cancel

Date	6:23am	Currency	Impact	Detail	Actual	Forecast	Previous	Graph
Sun Sep 22	6:45pm	NZD		Trade Balance	-2203M	-155M	-1016M	
	7:00pm	AUD		Flash Manufacturing PMI	46.7		48.5	
		AUD		Flash Services PMI	50.6		52.5	
	All Day	JPY		Bank Holiday				
Mon Sep 23	3:15am	EUR		French Flash Manufacturing PMI	44.0	44.3	43.9	
		EUR		French Flash Services PMI	48.3	53.0	55.0	
	3:30am	EUR		German Flash Manufacturing PMI	40.3	42.4	42.4	
		EUR		German Flash Services PMI	50.6	51.1	51.2	
	4:00am	EUR		Flash Manufacturing PMI	44.8	45.7	45.8	
	EUR		Flash Services PMI	50.5	52.3	52.9		

# Program Trading

<https://www.programtrading.com/index.html>

**Data:**

**\$ESINX**

**E- Mini S&P 500 Premium Index**



## [The Secret World of Program Trading](#)

Click here for a much better understanding of program trading and our firm.

## [Today's Program Trading Buy/Sell Levels](#)

Click here for our program trading premium execution levels for today.

## [CNBC's Most Frequently Asked Question](#)

Click here for our answer to the question, "What is Fair Value?".

## [Frequently Asked Questions \(FAQ\)](#)

Click here for more answers to frequently asked questions about program trading.

## [Program Trading Research®](#)

Click here for product information and our subscription rates and fees.

## [Program Trading Live®](#)

Click here to learn how you can receive live program trading information in real time.

## [Program Trading Seminars®](#)

Click here for information on how you can learn more about program trading.

## [About Our Web Sites](#)

Click here for additional information about our web sites.

Follow us 



## Program Trading Buy/Sell Levels for Today

Follow  
us 

Program Trading is over 90% of the volume every day. The more you know about Program Trading and that volume, the better you will trade your account.

## Program Trading 101

**Saturday October 12 & Sunday October 13**

Yes **Red** and **Green** are two secret **Program Trading Pattern Recognition Colors** that you must know well. So start learning right now and [click here](#).

To make your reservation [click here to contact us](#) or call us at 1-561-747-5000.

**Learn Program Trading. The best decision you will make in 2024.**

**For Post Expiration Week Thursday September 26, 2024**

### Program Trading Buy/Sell Price Levels

HL Camp **Fair Value** for the **S&P 500** today is **\$56.00**. **That price level may change during the day**. Our computers are set for program buying at **\$58.50**. And set for program selling at **\$53.75**. If you would like to see these program trading buy/sell levels in real time, you must have the very best data feeds and software.

If you would like answers to your questions about program trading then please [click here](#).

\$ESINX - 1 min CME L=102.74 44.67 76.92% B=0.00 A=0.00 O=57.82 Hi=62.24 Lo=53.56 V=0



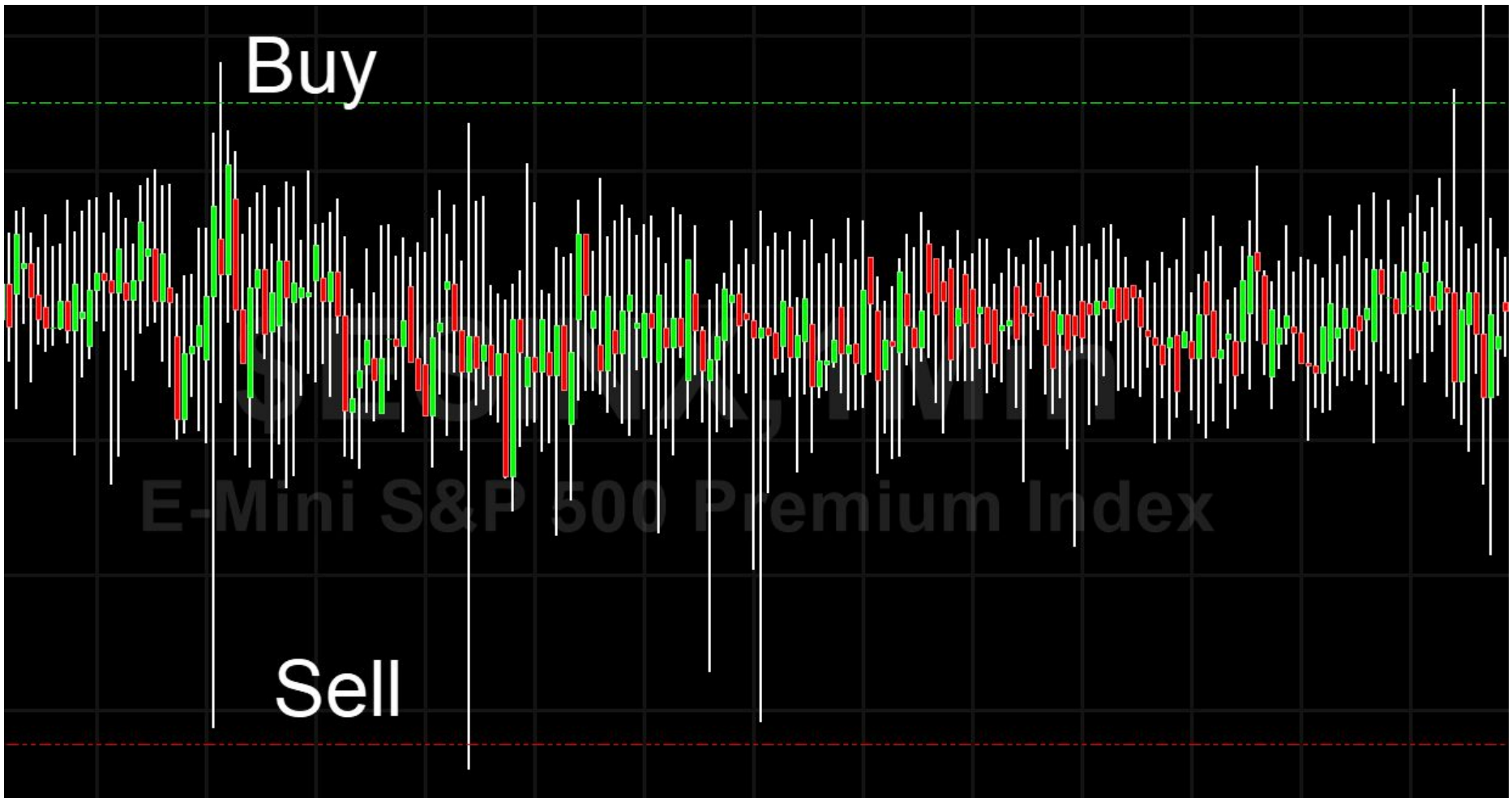
Wait 3-5 mins



Buy

Sell

E-Mini S&P 500 Premium Index



# Tick Strike

The image shows a screenshot of a website and a video player. The website header features the 'tickstrike' logo on the left and navigation links for 'Affiliate', 'Setup', and 'Purchase' on the right. The main heading on the website reads 'TRADE MOMENTUM USING ORDERFLOW CORRELATION WITH TICKSTRIKE'. Below this is a video player with a teal border. The video player's title is 'Trading Orderflow Breakouts & Correlation with TickStrike'. The video thumbnail contains the 'tickstrike' logo and the text 'TRADING ORDERFLOW BREAKOUTS & CORRELATION WITH TICKSTRIKE'. A red play button is centered over the text. The video player interface includes 'Watch later' and 'Share' buttons in the top right and a 'Watch on YouTube' button in the bottom left.

**tickstrike**      Affiliate      Setup      Purchase

**TRADE MOMENTUM USING ORDERFLOW  
CORRELATION WITH TICKSTRIKE**

Trading Orderflow Breakouts & Correlation with TickStrike      Watch later      Share

**tickstrike**

**TRADING ORDERFLOW  
BREAKOUTS & CORRELATION  
WITH TICKSTRIKE**

Watch on YouTube



Forex



Crypto



Futures



Stocks



ETF / ETN



Internals



Active



ES

0



NQ

0



TICK


0



YM

0

YM	0	NQ	-8	ES	-8	TICK	0
----	---	----	----	----	----	------	---



The image shows a control panel with a vertical slider and a lock icon. The slider is positioned at the bottom, with the number '6' below it. The lock icon is a padlock symbol.

# Pre & Post Market Prep

- Multiple Time Frame Analysis
- Rank then from strong to weak

# Pre & Post Market Prep

- Multiple Time Frame Analysis
- Rank then from strong to weak
- Cloud
- Power Shift
- Flbs
- ATR
- Recent Highs and Lows

# Time Frame Grid

	<b>Scalp</b>	<b>Very Short</b>	<b>Short Term</b>	<b>Medium Term</b>	<b>Swing Trade</b>	<b>Core Trade</b>	<b>Investor Pray</b>
Time Horizon	Minutes	Hours	Days	Weeks	Months	Years	Many Years
Chart Time Frame	Ticks 1 Min	5/10 Mins	Hourly	Daily	Weekly	Monthly	3 Months
Cloud Extends	30 Mins	2-5 hrs.	3-5 days	1 Month	6 Month	2 Years	8 years

# Trend Identification

- Time Frame - Hold Time
- Weekly - Months (6)
- Daily - Weeks (2-4)
- Hourly - Days (3-5 days)
- 10 Minute - Hours (2-5 hrs)



Create Alert Add to Watchlist

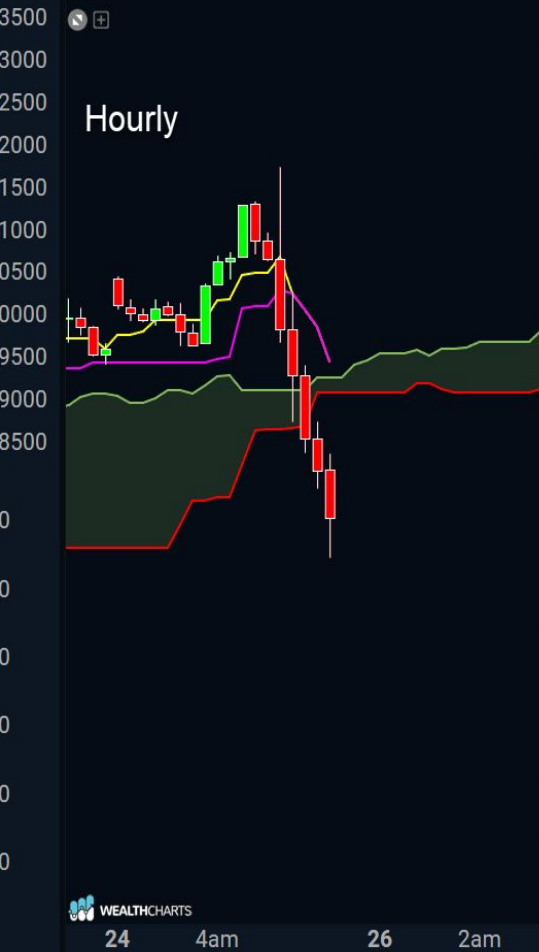
Equity Index Futures

All Results Above Cloud In Cloud + Filter

Symbol	Price	Cloud Score ↓
<input type="checkbox"/> N NKD1	38100...	Bullish
<input type="checkbox"/> N NQ1	20176...	Bullish
<input type="checkbox"/> E ES1	5777.50	Bullish
<input type="checkbox"/> R RTY1	2224.90	Neutral
<input type="checkbox"/> Y YM1	42296...	Neutral
<input type="checkbox"/> E EMD1	3122.40	Neutral

Cloud Score ↓
Bullish
Bullish
Bullish
Neutral
Neutral
Neutral







42750  
42700  
42650  
42600  
42550  
42500  
42450  
42400  
42350  
42300  
42250  
42200  
42150

4  
3  
2  
2  
1  
0

# Power Shift

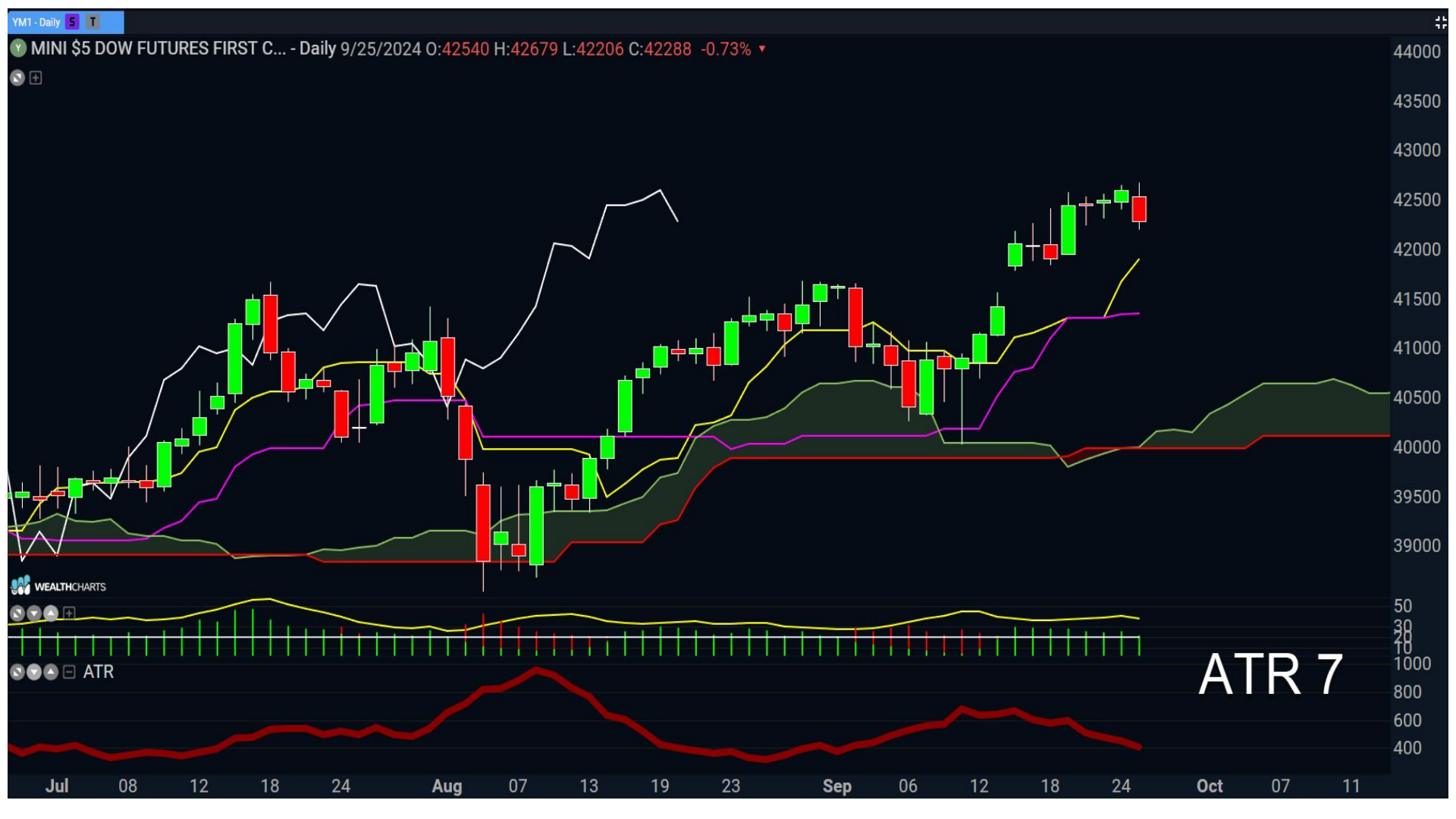
- ADX Setting 7
- Yellow line above white line trending
- Yellow line below white line non Trending
- Green Histogram Bulls in control
- Red Histogram Bears in control
- If conflict Pass wait for conflict to be resolved
- Or Look for a better trade setup

Yellow line above white line trending = True  
Yellow line below white line trend = False  
Green Histogram = Bulls Control  
Red Histogram = Bears Control



@YM.D - 2 min AS=6 CBOT L=42,315 -282 -0.66% B=42,315 A=42,317 O=42,627 Hi=42,679 Lo=42,206 V=104,074 Time Remaining in Bar ("00:02:00";"White";"Arial";8,1) Time Remaining in Bar ("00:02:00";"White";"Arial";8,1) Time Rema ...





# Open Range Breakout

@YM.D - 2 min AS=5 CBOT L=42,307 -290 -0.68% B=42,306 A=42,308 O=42,627 Hi=42,679 Lo=42,206 V=105,096 Time Remaining in Bar ("00:02:00", "White", "Arial", 8,1) Time Remaining in Bar ("00:02:00", "White", "Arial", 8,1) Time Rema ...



2 Minute Chart Mark the High and Low

CBOT L=42,329 -268 -0.63% B=42,328 A=42,330 O=42,627 Hi=42,679 Lo=42,206 V=105,487 Time Remaining in Bar ("00:02:00","White","Arial",8,1) Time Remaining in Bar ("00:02:00","White","Arial",8,1) Time Rema ...







# Gaps

CBOT L=42,310 -287 -0.67% B=42,309 A=42,311 O=42,627 Hi=42,679 Lo=42,206 V=109,340 Time Remaining in Bar ("00:02:00","White","Arial",8,1) Time Remaining in Bar ("00:02:00","White","Arial",8,1) Time Rema...





Full gap fill 61%

1/2 gap fill 82%

100.00% (42,466)

50.00% (42,405)

0.00% (42,344)

42,316

42,300

42,250

# Ambush



42346 (0.0%)

2

42350

42340

42330

42320

42310

42300

42290

42280

42270

42260

42250

42240

42230

42220

42210

42200

42276 (50.0%)

3

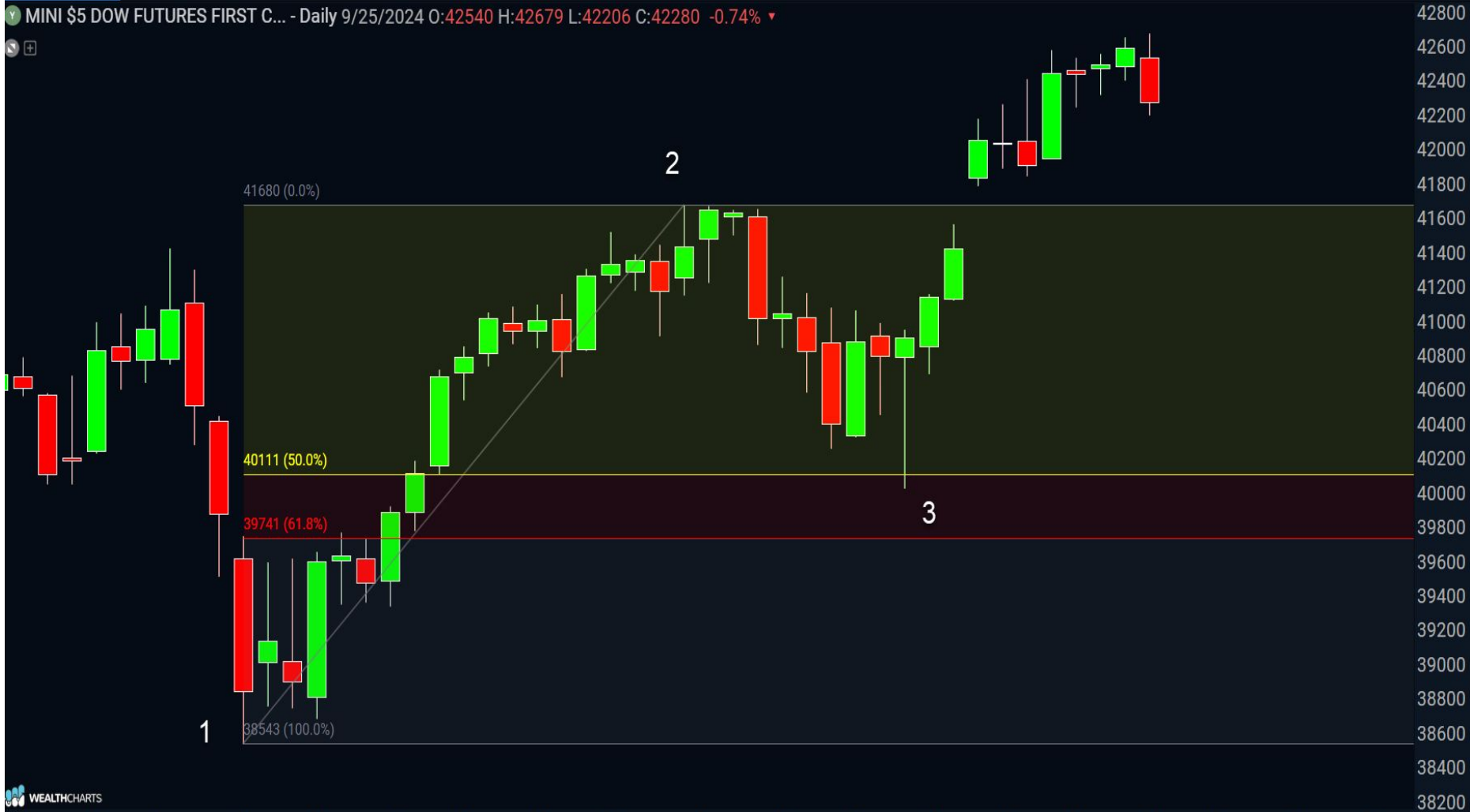
AMBUSH ZONE

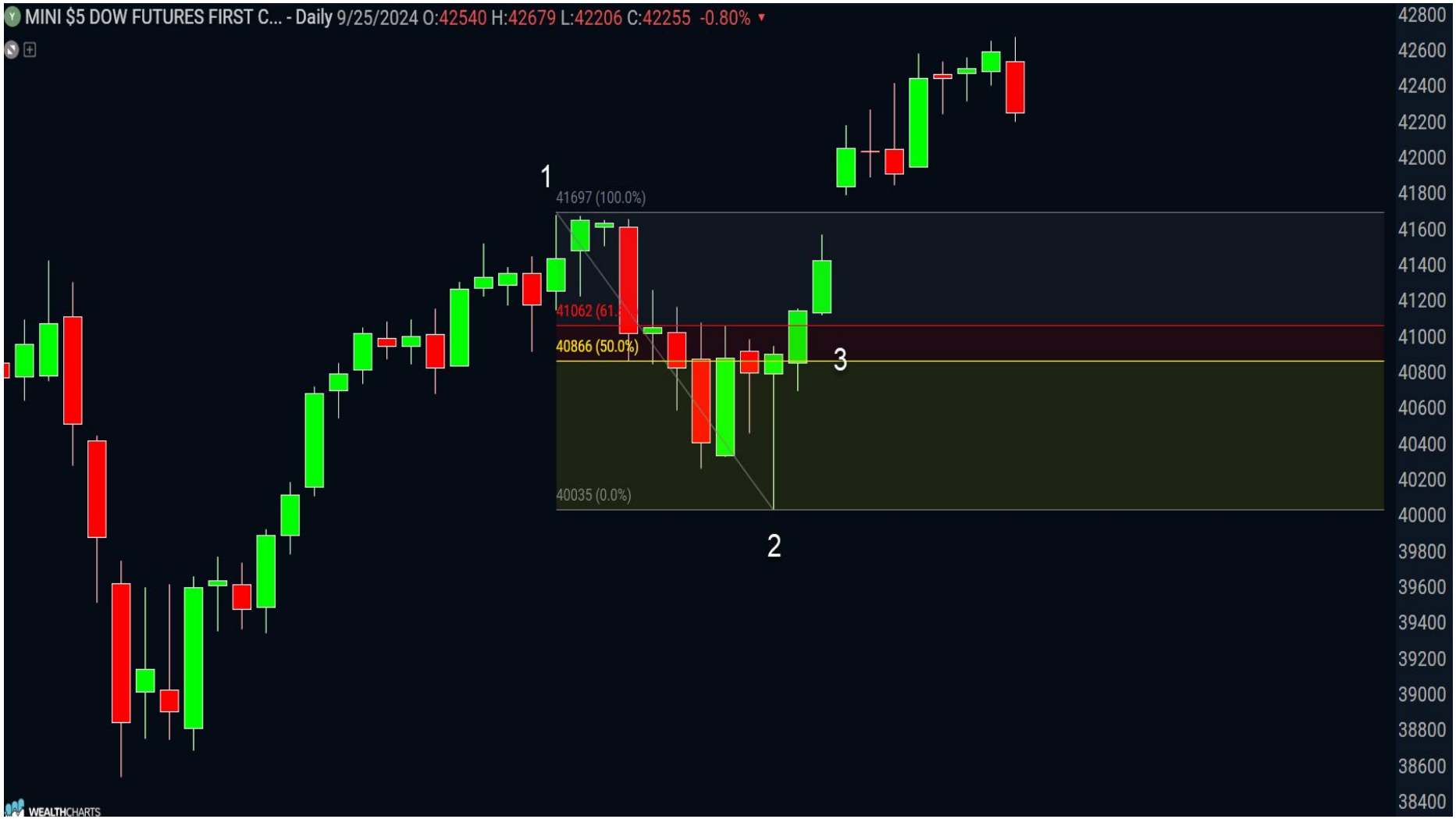
42268 (61.8%)

1

42206 (100.0%)







42800  
42600  
42400  
42200  
42000  
41800  
41600  
41400  
41200  
41000  
40800  
40600  
40400  
40200  
40000  
39800  
39600  
39400  
39200  
39000  
38800  
38600  
38400



# TICKS RPM Gauge of the Market

**DATA:**

**\$Tick**

**NYSE Tick**

Fade first one

GO with Second



Fade first one

Go with 2nd one



@YM.D - 1 min AS=2 CBOT L=42,265 -332 -0.78% B=42,265 A=42,266 O=42,627 Hi=42,679 Lo=42,206 V=...



\$TICK - 1 min NYSE L=-223 0 0.00% B=0 A=0 O=0 Hi=0 Lo=0 V=0 Mov Avg 1 Line (Close,1,0) -223 ...





Resistance 2

Resistance 1

Support 1

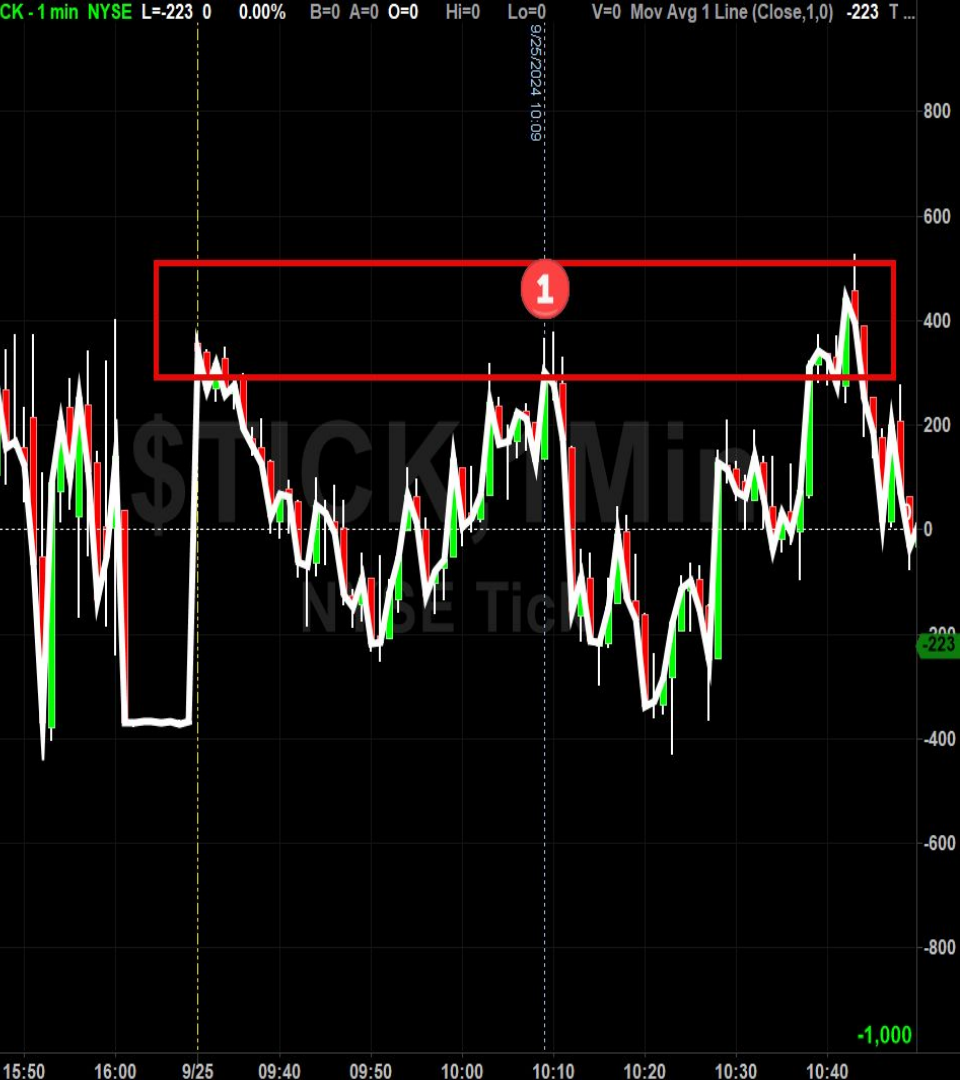
Support 2

1,000

-1,000

-223

00:00





# Rotational Trades

- **Cloud Trend Continuation Trade**
- **Daily Above Cloud**
- **Hourly Above CCloud**
- **10 Minute Below CCloud**
- **Enter Once 10 Minute is back above Cloud**

# Volume Spike Trades

- **Sell of at or close to ATR**
- **Look for Volume Spike**
- **Enter on on CAHLB or TAHLB**
- **Close Above High of Low Bar**
- **Trade Above High of Low Bar**

**Do You Know Your Win Lose Ratio**

# Solve for X

	Win Loss Rate				
	20%	30%	40%	50%	60%
1:1	LOSS	LOSS	LOSS	Break Even	Profit
1:2	LOSS	LOSS	Profit	Profit	Profit
1:3	LOSS	Profit	Profit	Profit	Profit
1:4	Break Even	Profit	Profit	Profit	Profit
1:5	Profit	Profit	Profit	Profit	Profit

# Lease or Buy a seat

<https://www.cmegroup.com/company/membership/membership-and-lease-pricing.html>

## CME Membership Rates

Contract	Non-Member	Member Owner	Member Lease
E-mini Futures	\$1.18	\$0.35	\$0.47
Micro E-mini Futures	\$0.20	\$0.04	\$0.07
Currency Futures	\$1.60	\$0.32	\$0.52
Financial Futures	\$1.25	\$0.19	\$0.37

