

INSIDER MASTERMIND Chicago 2024



Silas Peters

TRADES
TRENDING

RISK DISCLAIMER

IMPORTANT NOTICE: No representation is being made that the use of this strategy or any system or trading methodology will generate profits. Past performance is not necessarily indicative of future results. There is substantial risk of loss associated with trading securities and options on equities. Only risk capital should be used to trade. Trading stocks, options, futures, forex, and securities are not suitable for everyone. Disclaimer: Futures, Options, Securities and Currency trading all have large potential rewards, but they also have large potential risk. You must be aware of the risks and be willing to accept them in order to invest in these markets. Don't trade with money you can't afford to lose. This website is neither a solicitation nor an offer to Buy/Sell futures, options, stocks, or currencies. No representation is being made that any account will or is likely to achieve profits or losses similar to those discussed on this web site. The past performance of any trading system or methodology is not necessarily indicative of future results.

CFTC RULE 4.41 – HYPOTHETICAL OR SIMULATED PERFORMANCE RESULTS HAVE CERTAIN LIMITATIONS. UNLIKE AN ACTUAL PERFORMANCE RECORD, SIMULATED RESULTS DO NOT REPRESENT ACTUAL TRADING. ALSO, SINCE THE TRADES HAVE NOT BEEN EXECUTED, THE RESULTS MAY HAVE UNDER-OR-OVER COMPENSATED FOR THE IMPACT, IF ANY, OF CERTAIN MARKET FACTORS, SUCH AS LACK OF LIQUIDITY. SIMULATED TRADING PROGRAMS IN GENERAL ARE ALSO SUBJECT TO THE FACT THAT THEY ARE DESIGNED WITH THE BENEFIT OF HINDSIGHT. NO REPRESENTATION IS BEING MADE THAT ANY ACCOUNT WILL OR IS LIKELY TO ACHIEVE PROFIT OR LOSSES SIMILAR TO THOSE SHOWN.

Any and all influences on price are
REFLECTED in price

Earnings Report
News
Income Statement
Balance Sheet
Fed Announcement
Economic Report
Terrorist Alert/Attack
"Trading/Investing Tip"
Broker
Upgrade/Downgrade
Analyst Opinion
Technical Indicators

Thoughts
and
Perceptions

ACTION
Buy
or
Sell

All this information creates thoughts and perceptions that are different for everyone depending on their personal **BELIEF**
SYSTEM....

These beliefs lead to ACTION....action is either
buying and selling...

Each action to buy or sell takes place at a
specific price...

Therefore, price is all the consistent trader and investor needs to focus on...

KEY TAKEAWAY

Any and all influences on price...

Are reflected in price...

INSIDER MASTERMIND – DAY 1

- Higher Level Price Action Applications
- High Odd Entry Techniques & Confluences

HIGHER LEVEL PRICE ACTION APPLICATIONS

Day 1 - Session 1

MARKET STRUCTURE

Combining multiple timeframes and structure help give us a solid foundation to *'predict'* what is likely to happen next....

Once your swing points (and zones) are defined, we now have a strong base to work from

For example, we can have D1 swing points (HTF) but then have 1H swing points (LTF) within the D1 swing point...

Understanding our HTF narrative, along with our swing points (zones), gives us a clearer insight into what is going on in the market

**This ensures we don't get caught up in the noise ...always
zoom out...looking left**

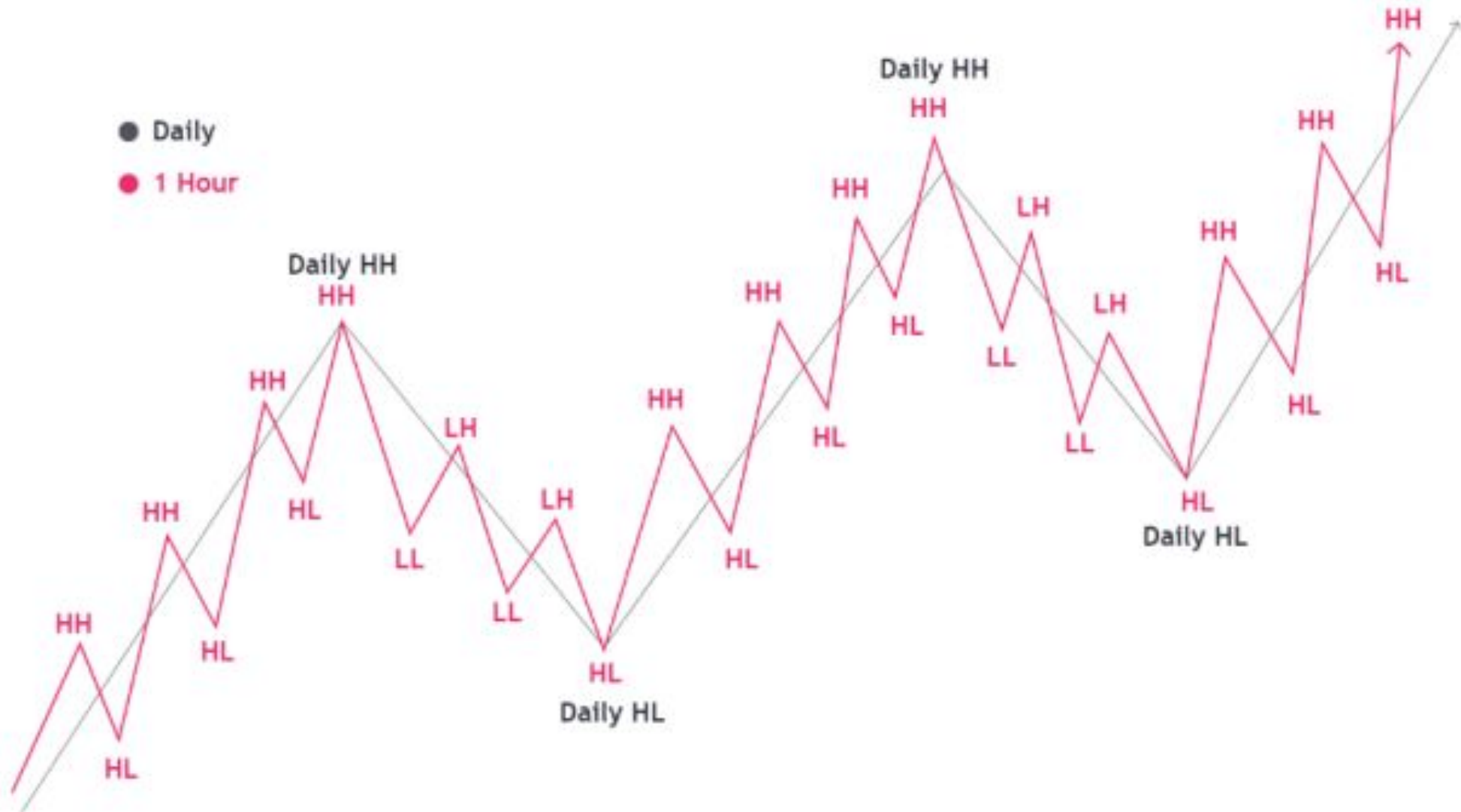
Four Main Structure Points

1. HH - Higher High
2. HL - Higher Low
3. LH - Lower High
4. LL - Lower Low

HH and HL come in uptrends where all the highs in an uptrend are called Higher Highs and all the lows are called Higher Lows

LL and LH come in downtrends where all the highs in an downtrend are called Lower Highs and all the lows are called Lower Lows

- Daily
- 1 Hour



BREAK OF STRUCTURE

When we break a structural point:

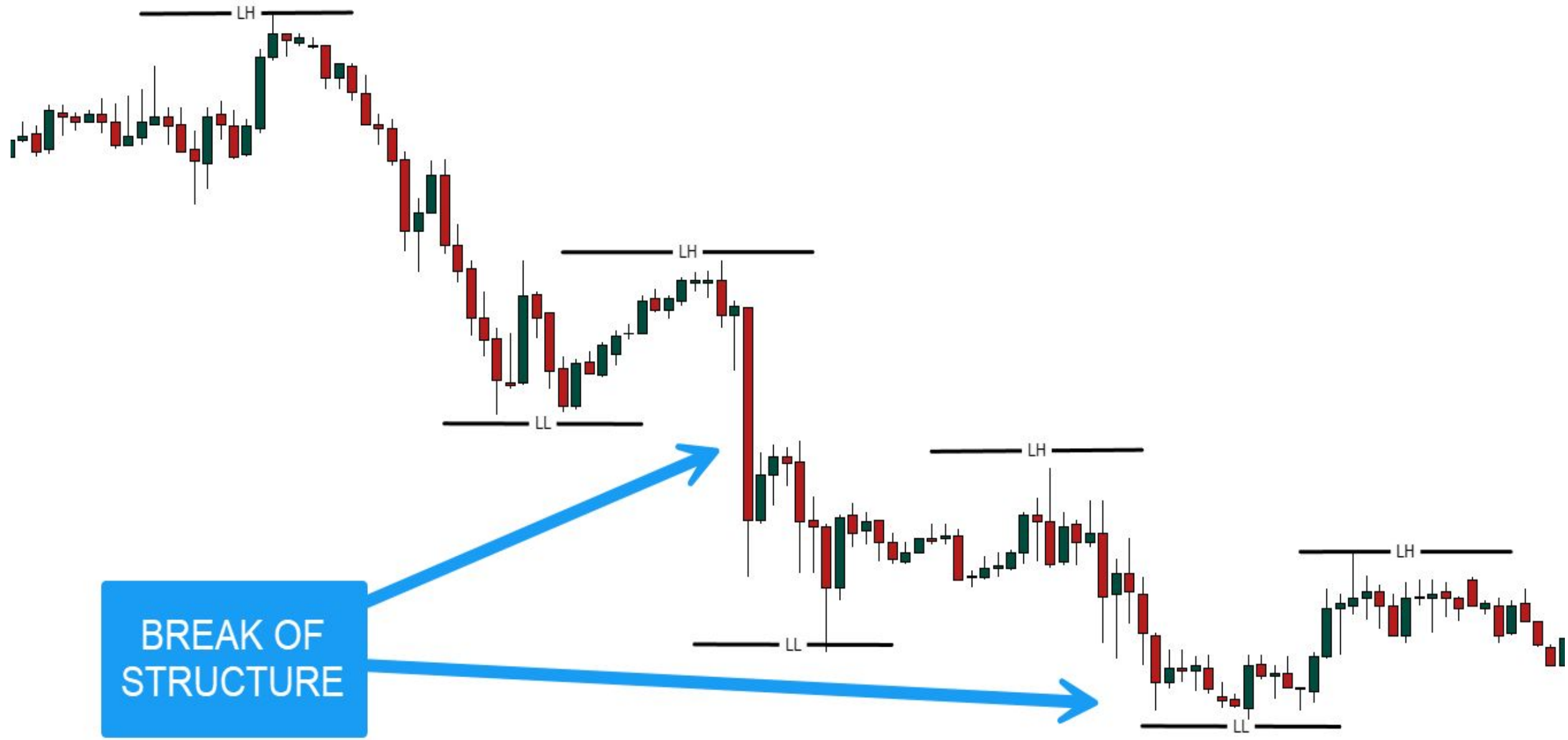
HH, HL, LH, or LL

In a downtrend creating LL and LH

- When we break a LL, we create new LL and **continue downtrend**
- When we break a LH, we create new HH and **start uptrend**

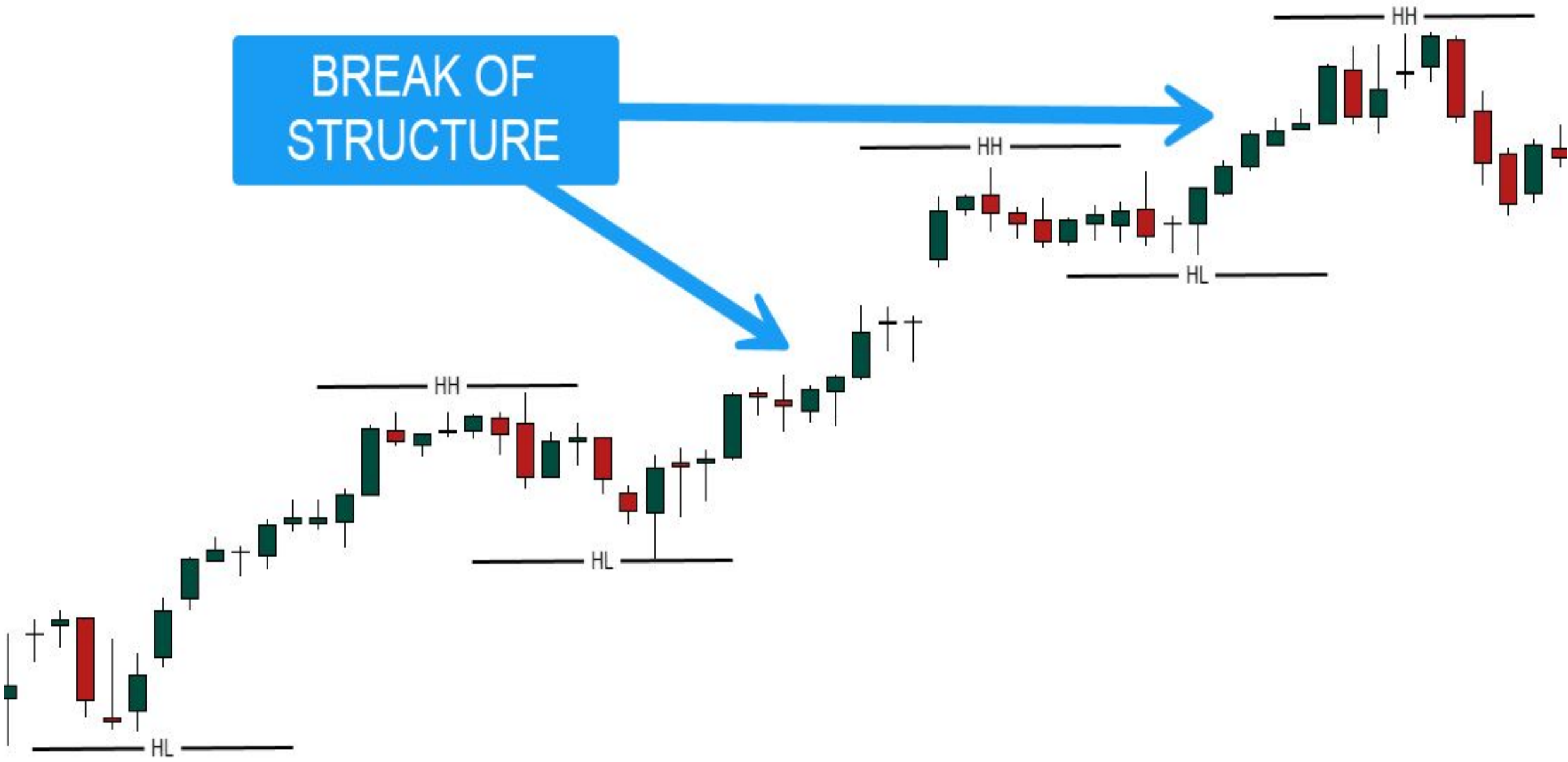
In an uptrend creating HH and HL

- When we break a HH, we create new HH and **continue uptrend**
- When we break a HL, we create new LL and **start downtrend**



**BREAK OF
STRUCTURE**

**BREAK OF
STRUCTURE**



BULL & BEAR FLIPS



A 'flip' is the first time a LH (bullish flip) or HL (bearish flip) gets taken out

We use this to spot the first shift in sentiment

In an uptrend creating HH and HL

- If current price breaks a HH, **trend continues**
- If current price breaks an HL, trend shifts to down which is a **BEARISH FLIP**

In a downtrend creating LH and HL

- If current price breaks a LL, **trend continues**
- If current price breaks an LH, trend shifts to up which is a **BULLISH FLIP**

PRICE BREAKS

LH, new trend shifts to up which is our bullish flip

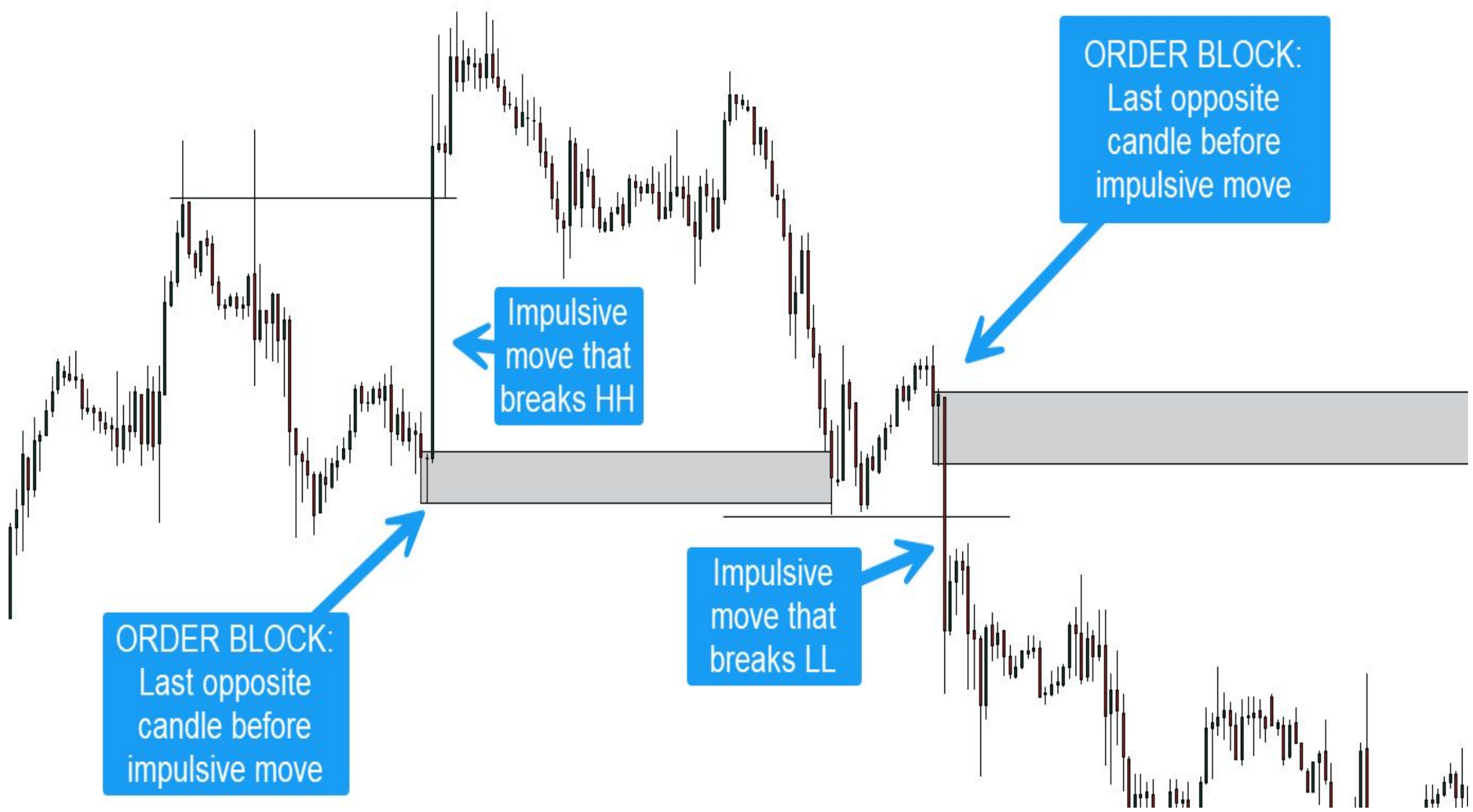




PRICE BREAKS
HL, new trend
shifts to down
which is our
bearish flip

ORDER BLOCKS

Supply & Demand Zones where
large buy and sell orders are placed



ORDER BLOCK:
Last opposite
candle before
impulsive move

Impulsive
move that
breaks HH

ORDER BLOCK:
Last opposite
candle before
impulsive move

Impulsive
move that
breaks LL

TYPES OF ORDER BLOCKS

1. Bullish Order Block
2. Bearish Order Block

BULLISH ORDER BLOCKS

Occur in an uptrend when price is creating HH and HL

Need to see impulsive move breaking a previous HH, and new HH is made

We take the last **DOWN** candle before the move started that created the HH



BEARISH ORDER BLOCKS

Occur in an downtrend when price is creating LH and LL

Need to see impulsive move breaking a previous LL, and new LL is made

We take the last **UP** candle before the move started that created the LL



IN SUMMARY

Bullish Order Block = DEMAND ZONES

Bearish Order Block = SUPPLY ZONES

LIQUIDITY

The volume or amount of orders placed by
traders at a particular point

Found primarily more ABOVE and BELOW a range, than *inside* the range

Why?

Because many reversal traders place buy limit orders at support with stop losses (sell orders) below that support zone

And breakout traders place their sell orders
below a support zone to go short

We are NOT breakout traders

'Resting' Liquidity



Liquidity Points

'Resting' Liquidity

Liquidity Points



More liquidity=more volume=faster move

Less liquidity=less impulsive move=ranging market

IMBALANCES

Imbalances occur when there are either more buyers or sellers in the market that 'overwhelm' the other side

Markets generally do not like 'inefficiency' or 'irregularity' in prices that result in imbalances...gaps...spikes

...So the market moves back to those zones to fill the inefficiency

More often, price returns to fill the **imbalance...**

...Created from the **impulsive move**

That caused the **imbalance...**



Imbalance

Banks and financial institutions make up **90-95% +** of the overall volume in the markets...

RETAIL SELLING RESISTANCE / BUY STOPS



RETAIL SELLING RESISTANCE / BUY STOPS

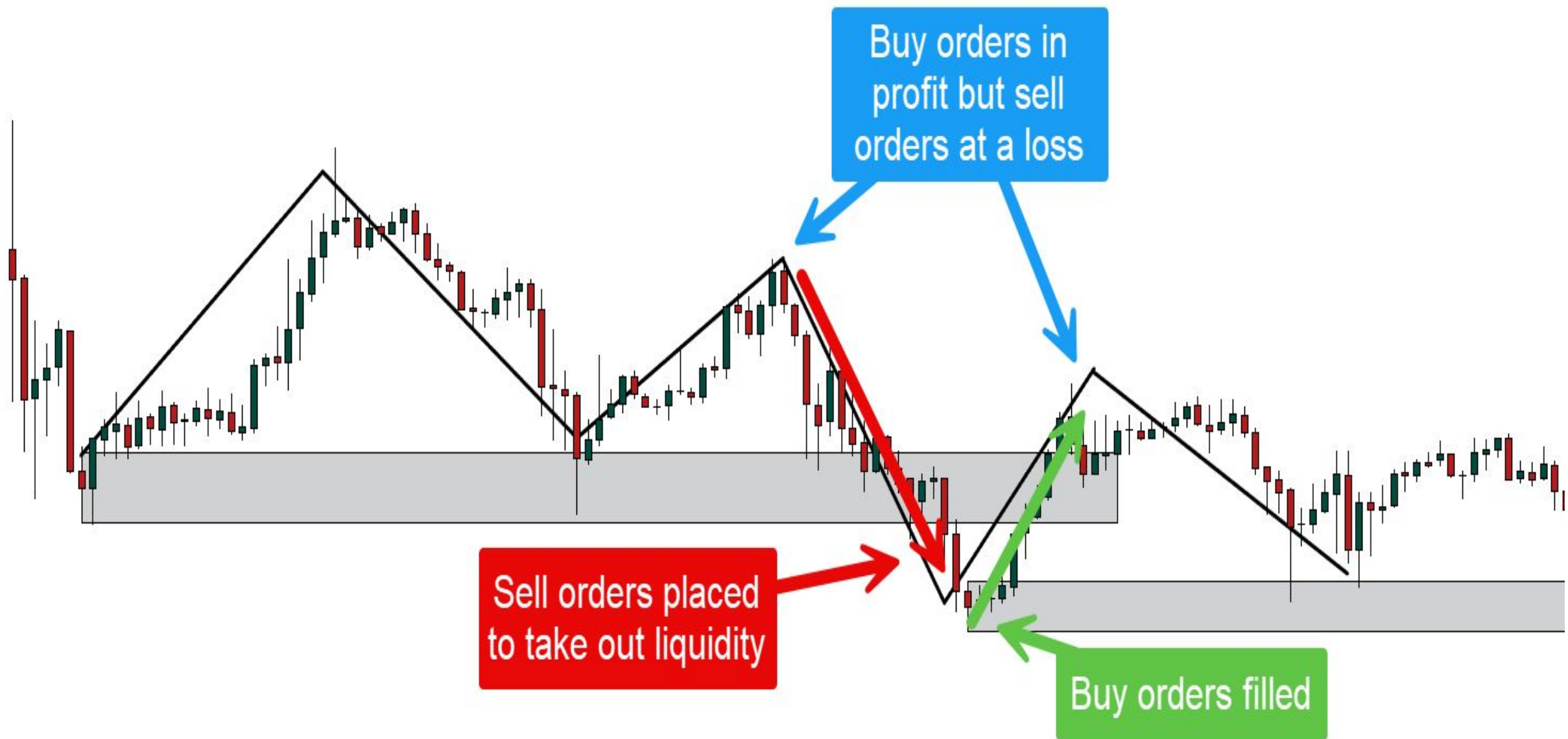


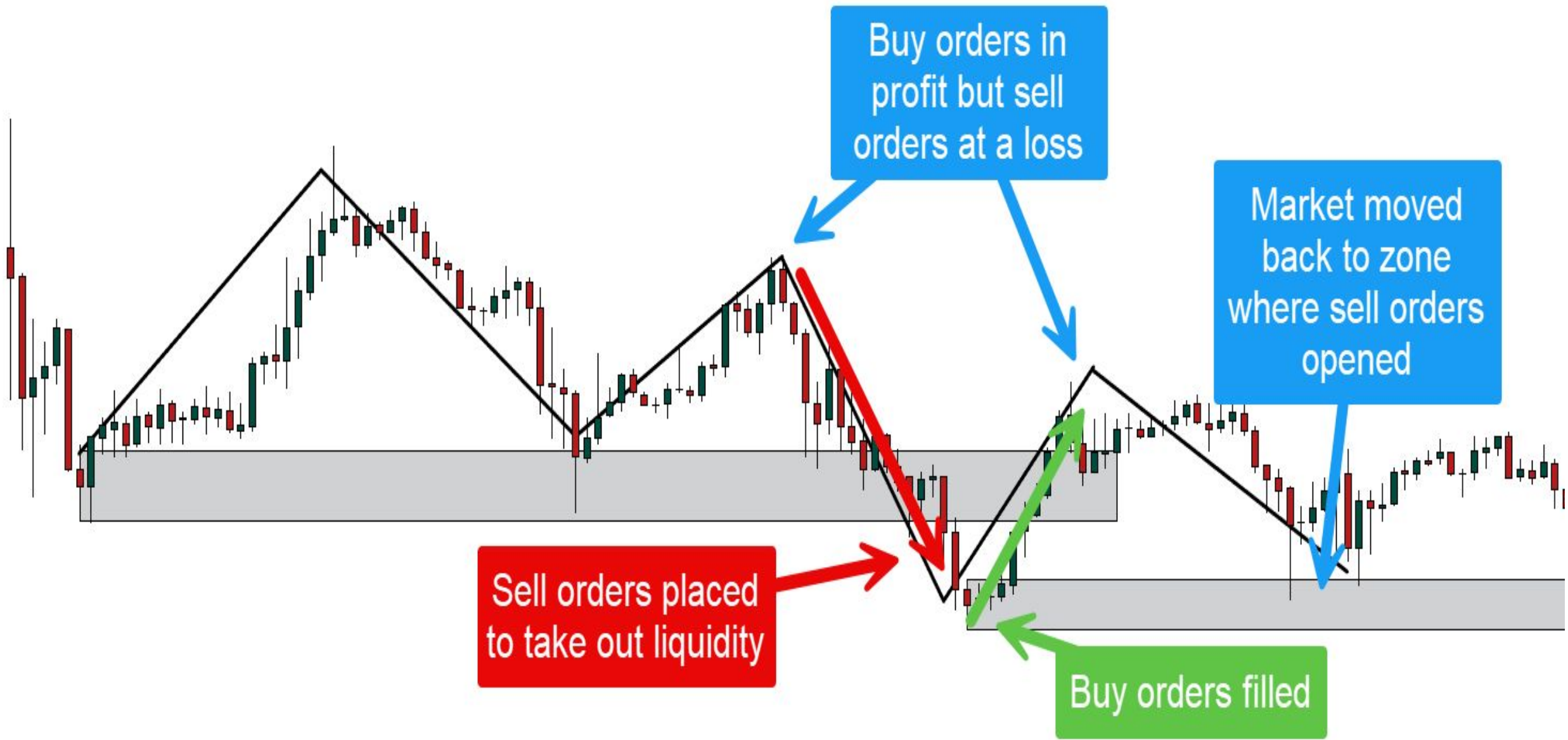


RETAIL BUYING SUPPORT

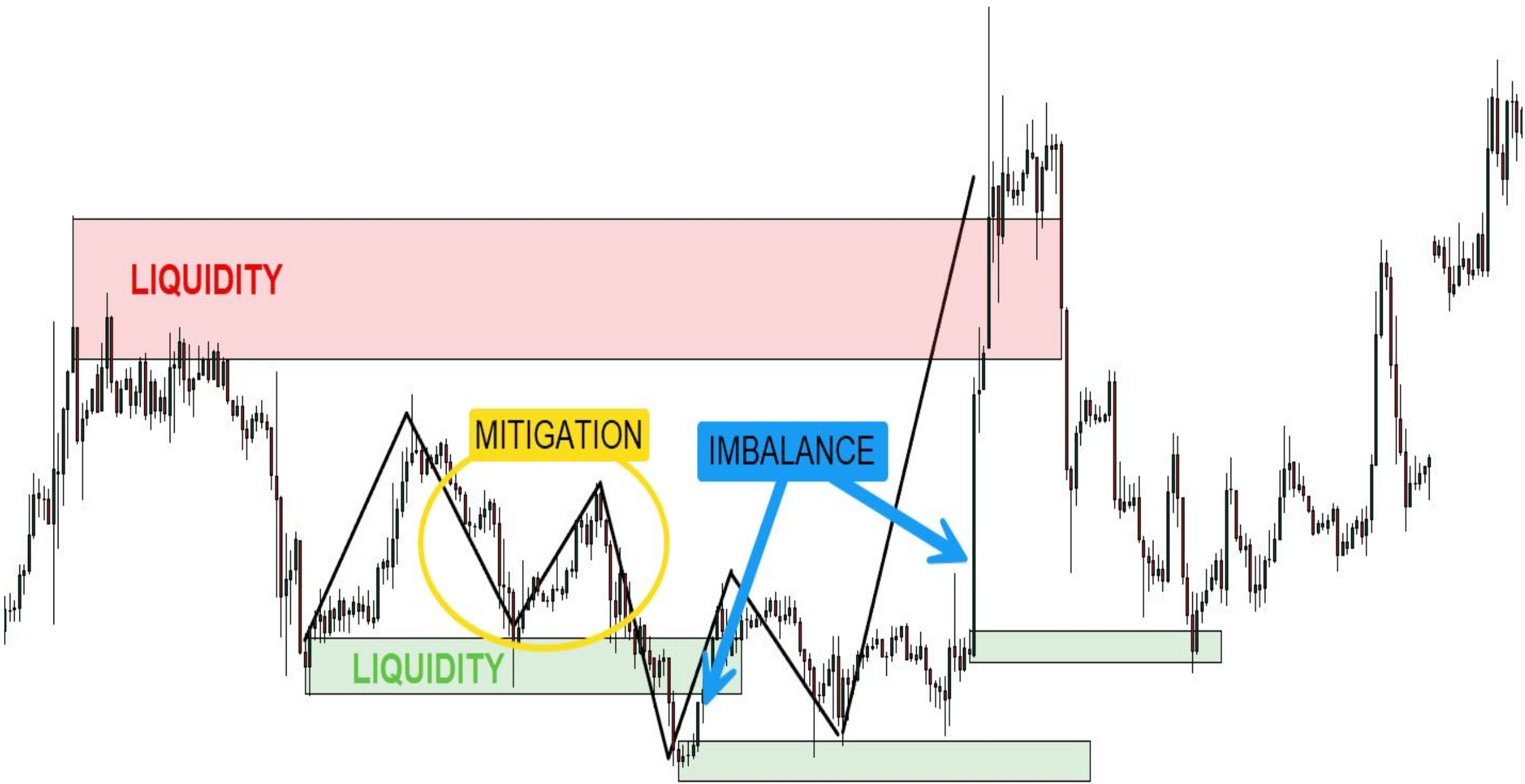


MITIGATION





AT A GLANCE



LIQUIDITY

MITIGATION

IMBALANCE

LIQUIDITY

And this is where we want to ENTER to catch
the continuation move...

FLIPS

2 TYPES OF FLIPS

S2D Flip (Supply to Demand Flip)

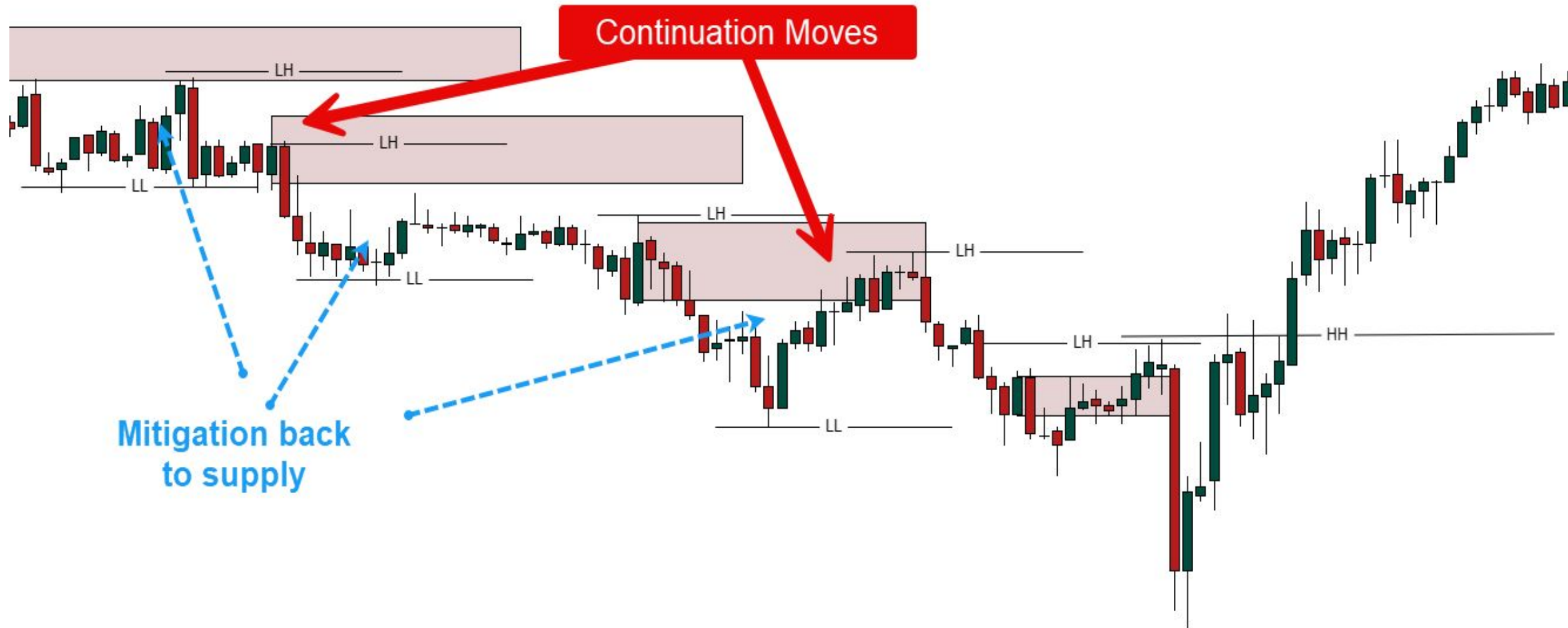
D2S Flip (Demand to Supply Flip)

2 TYPES OF FLIPS

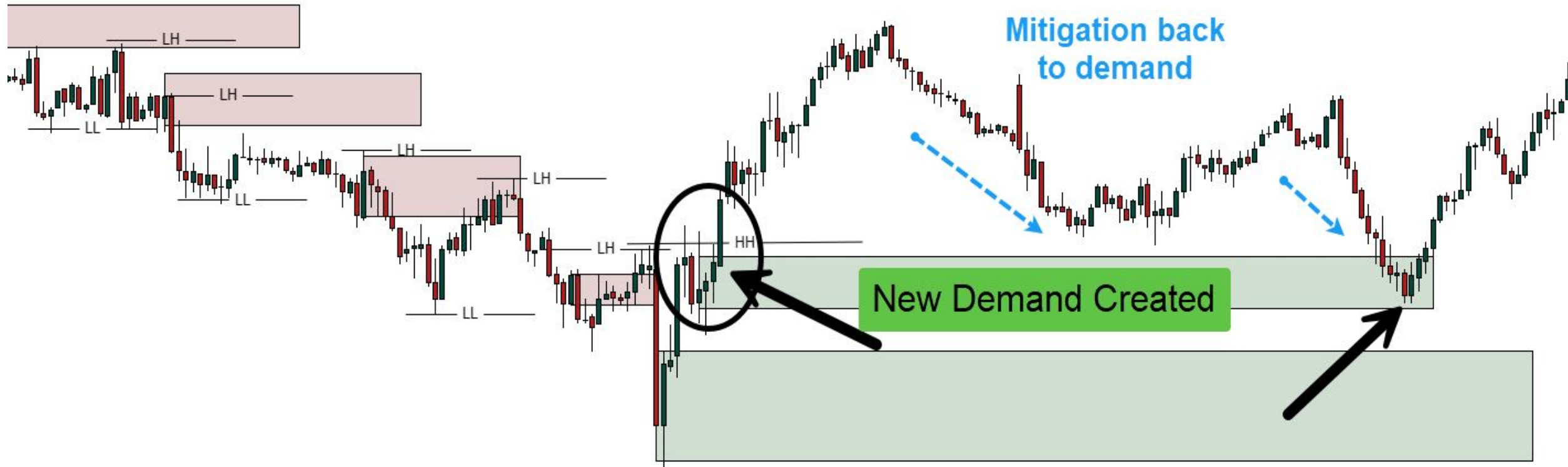
S2D Flip (Supply to Demand Flip)

D2S Flip (Demand to Supply Flip)

S2D Flip (Supply to Demand Flip)



S2D Flip (Supply to Demand Flip)

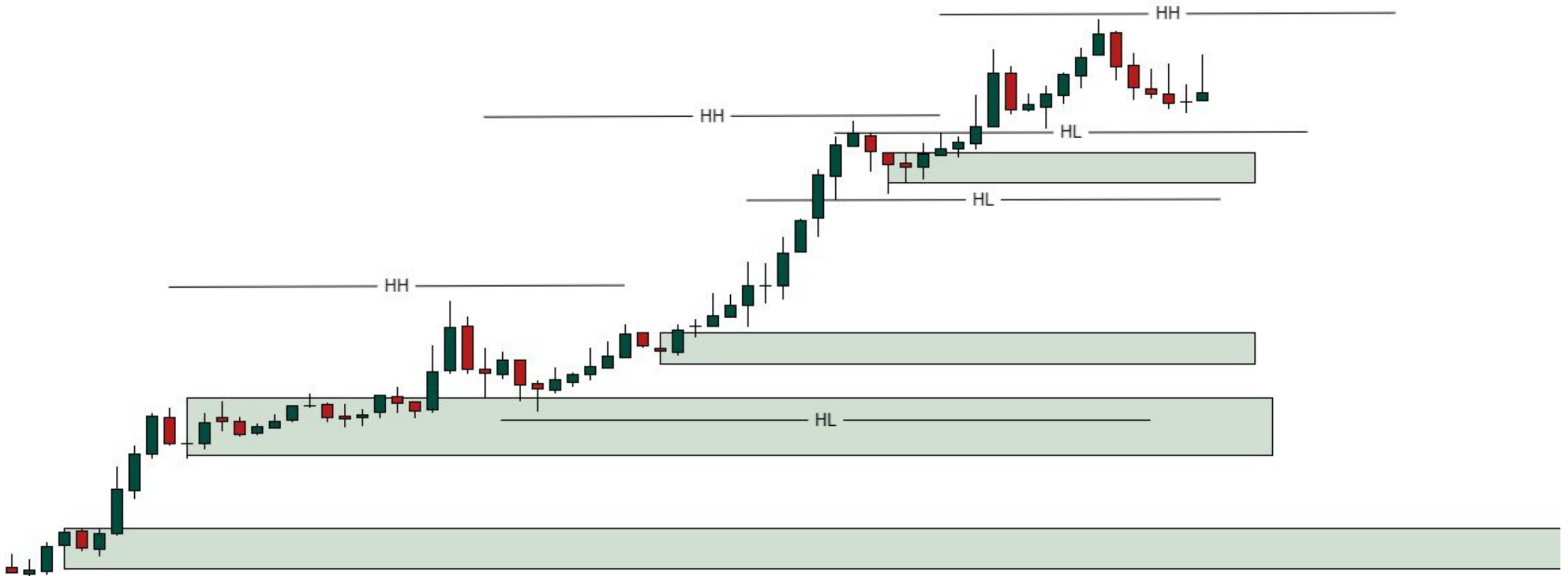


2 TYPES OF FLIPS

S2D Flip (Supply to Demand Flip)

D2S Flip (Demand to Supply Flip)

D2S Flip (Demand to Supply Flip)



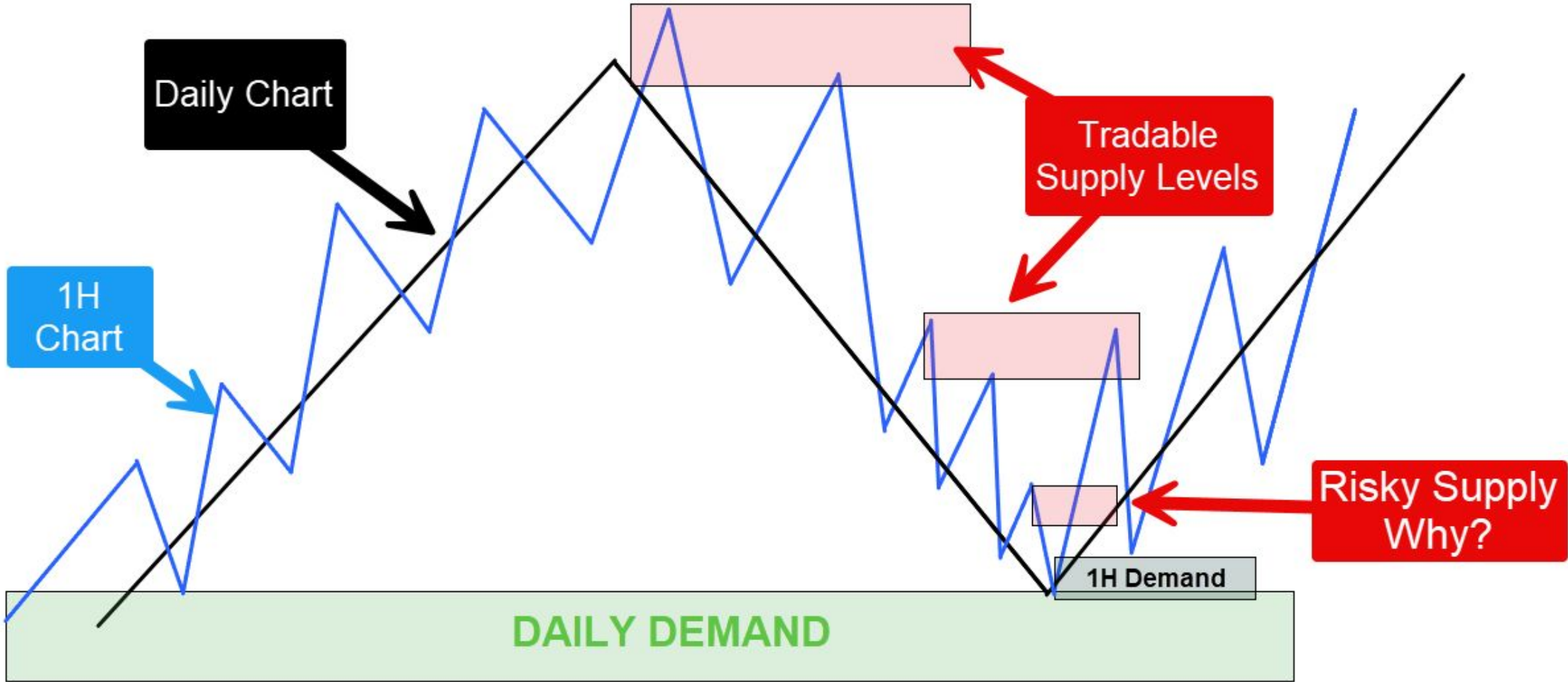
D2S Flip (Demand to Supply Flip)



ORDER FLOW

Order Flow is looking at the price from different timeframes to decide which direction to trade

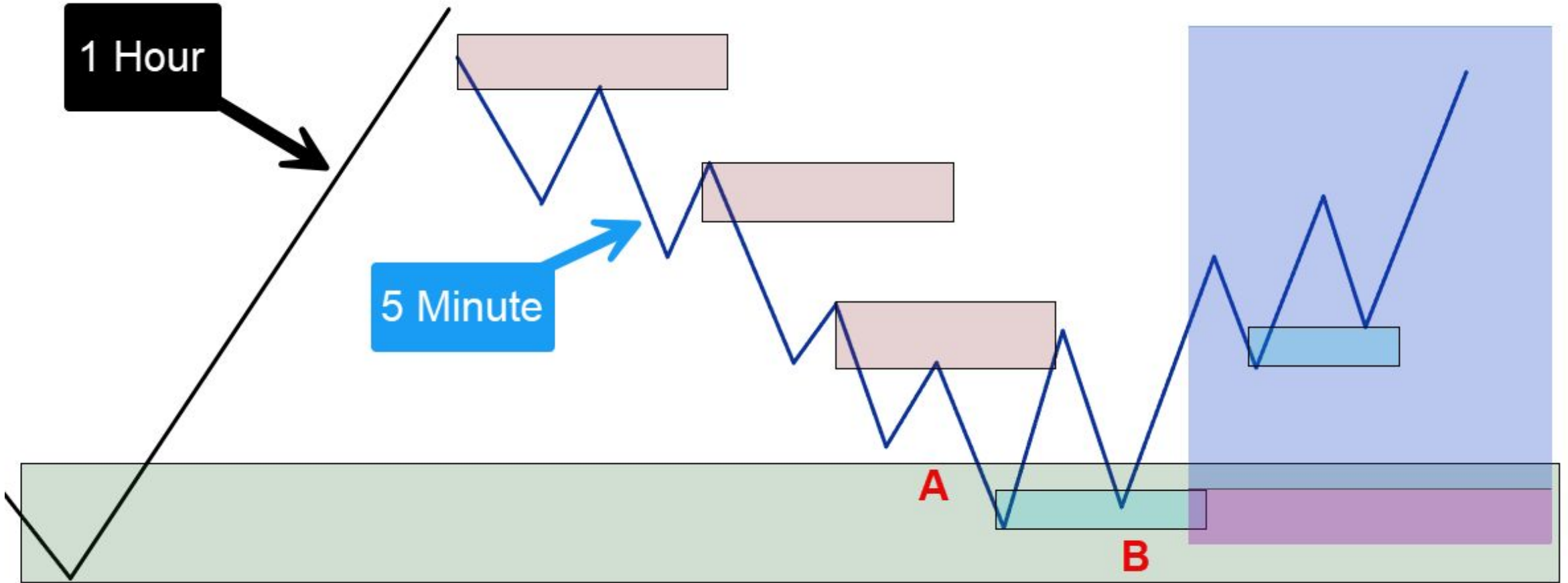
ORDER FLOW



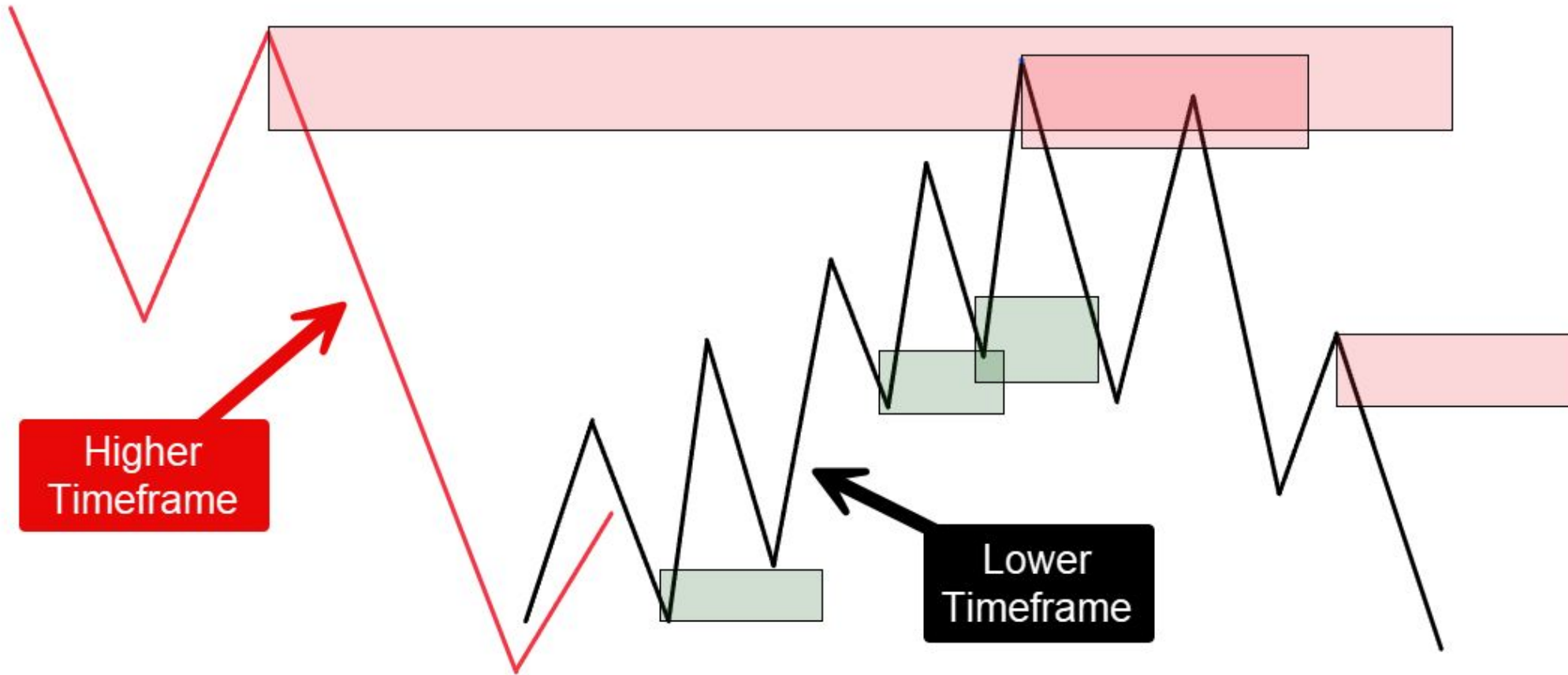
LOWER TIMEFRAME (LTF) CONFIRMATION

Regardless of timeframe, it is always better to take confirmation on or from a LOWER timeframe...

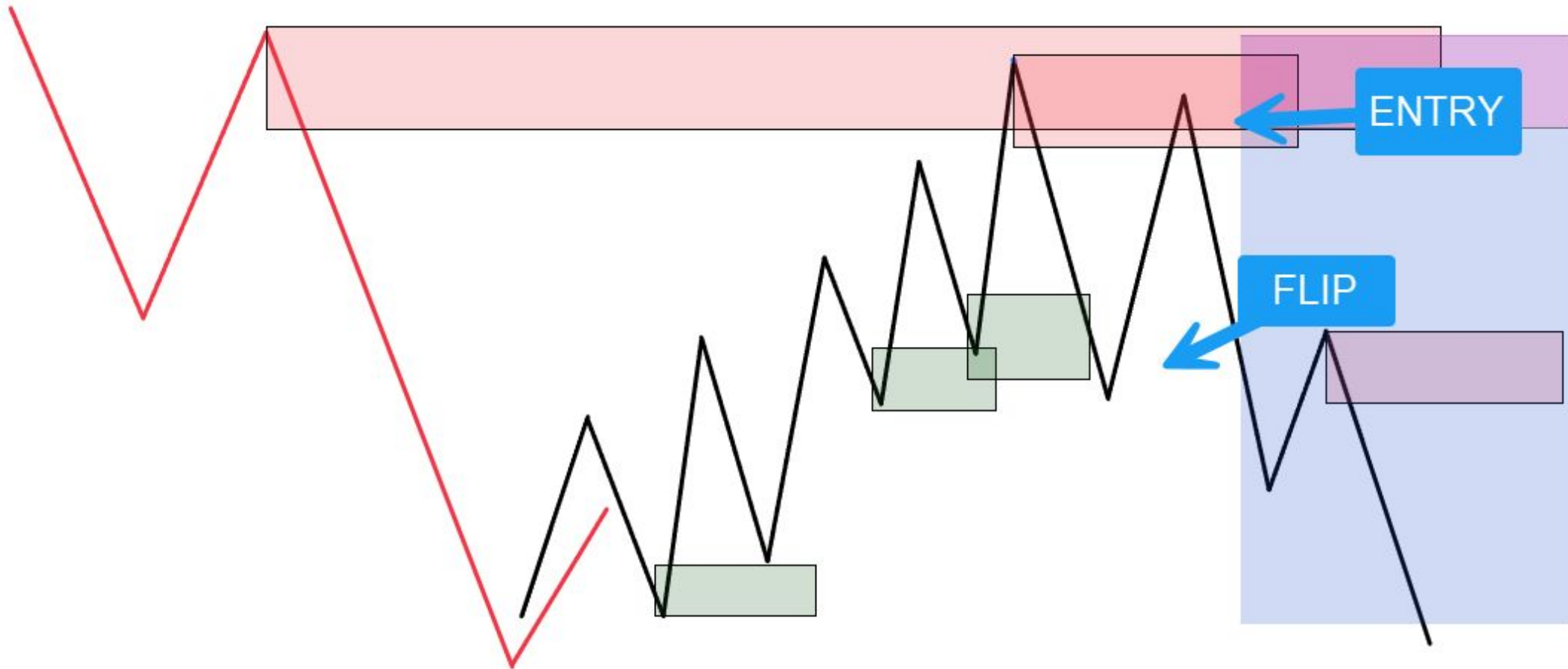
Lower Timeframe Confirmation



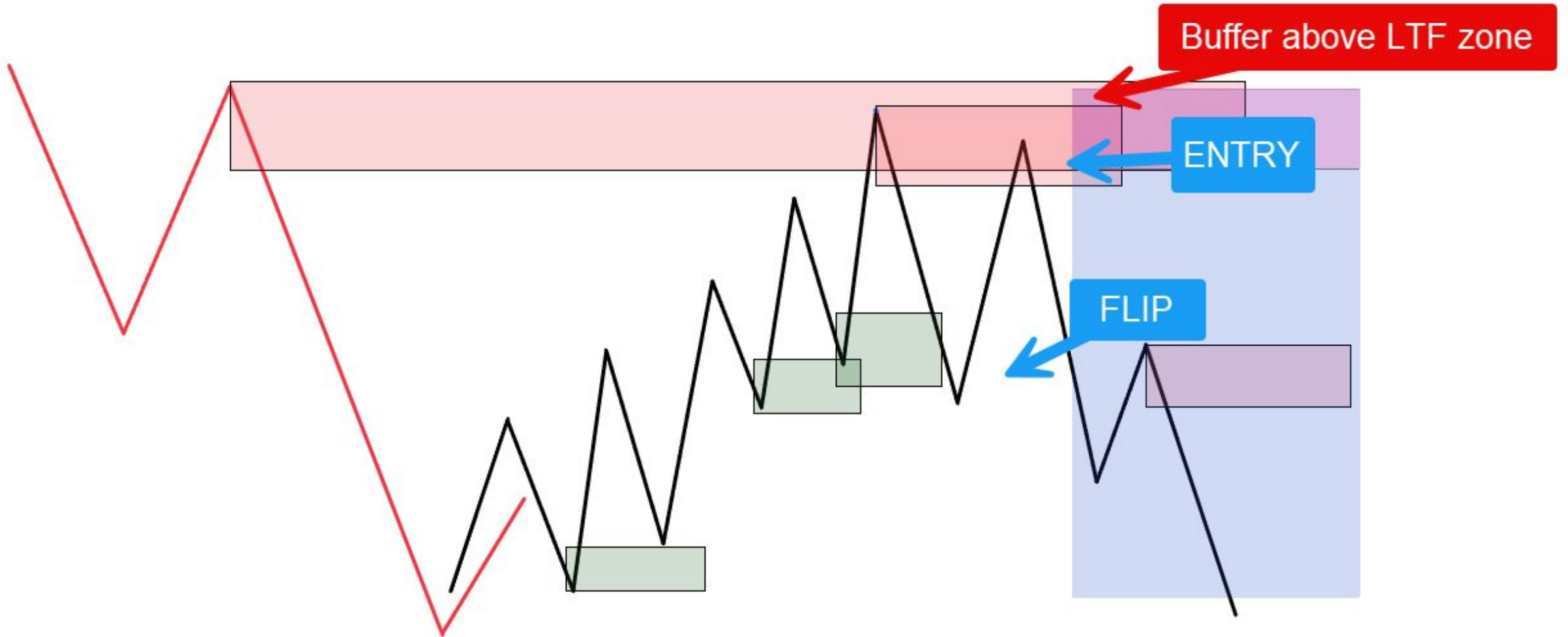
Lower Timeframe Confirmation



ENTRY



STOPS (RISK)



TARGETS (PROFITS)

