

# INSIDER MASTERMIND Chicago 2024



Silas Peters

**TRADES**  
TRENDING

# RISK DISCLAIMER

IMPORTANT NOTICE: No representation is being made that the use of this strategy or any system or trading methodology will generate profits. Past performance is not necessarily indicative of future results. There is substantial risk of loss associated with trading securities and options on equities. Only risk capital should be used to trade. Trading stocks, options, futures, forex, and securities are not suitable for everyone. Disclaimer: Futures, Options, Securities and Currency trading all have large potential rewards, but they also have large potential risk. You must be aware of the risks and be willing to accept them in order to invest in these markets. Don't trade with money you can't afford to lose. This website is neither a solicitation nor an offer to Buy/Sell futures, options, stocks, or currencies. No representation is being made that any account will or is likely to achieve profits or losses similar to those discussed on this web site. The past performance of any trading system or methodology is not necessarily indicative of future results.

CFTC RULE 4.41 – HYPOTHETICAL OR SIMULATED PERFORMANCE RESULTS HAVE CERTAIN LIMITATIONS. UNLIKE AN ACTUAL PERFORMANCE RECORD, SIMULATED RESULTS DO NOT REPRESENT ACTUAL TRADING. ALSO, SINCE THE TRADES HAVE NOT BEEN EXECUTED, THE RESULTS MAY HAVE UNDER-OR-OVER COMPENSATED FOR THE IMPACT, IF ANY, OF CERTAIN MARKET FACTORS, SUCH AS LACK OF LIQUIDITY. SIMULATED TRADING PROGRAMS IN GENERAL ARE ALSO SUBJECT TO THE FACT THAT THEY ARE DESIGNED WITH THE BENEFIT OF HINDSIGHT. NO REPRESENTATION IS BEING MADE THAT ANY ACCOUNT WILL OR IS LIKELY TO ACHIEVE PROFIT OR LOSSES SIMILAR TO THOSE SHOWN.

# INSIDER MASTERMIND – DAY 1

- Higher Level Price Action Applications
- **High Odd Entry Techniques & Confluences**

# **HIGH ODD ENTRY TECHNIQUES & CONFLUENCES**

**Day 1 - Session 2**

**“We have long felt that the only value of stock forecasters is to make fortune-tellers look good.”**

**-WARREN BUFFETT**

**You can have the best EDGE  
in the world...**

**ITS ALL FUN AND GAMES**



**UNTIL SOMETHING BLOWS UP**

**RISK MANAGEMENT!**

# **RISK vs REWARD**

Present low-risk high-reward entry points  
from the **BEST** places on the charts!

# RISK : REWARD

- 1.5 – 2 Reward vs Our Risk is initial goal
- 40-60% win rate is sufficient
- Fixed 'R' removes emotions
- Set and forget

# **RISK : REWARD**

- Singles and doubles
- Triples and home runs
- The Grand Slam

# TOOLKIT

- Titan Levels
- 3S Code
- TPI Divergence
- Candlestick Confirmations

# CONFLUENCE 'ADD-ONS'

- Moving Averages
- Fibonacci

# CANDLESTICKS

- Pin Bars
- Engulfing Bars
- Inside Bars

# RULES

- **Higher Timeframe Titan Levels**
- 3S CODE Signals
- TPI Divergence Signals
- Candlestick Confirmations



# RULES

- Higher Timeframe Titan Levels
- **3S CODE Signals**
- TPI Divergence Signals
- Candlestick Confirmations

# 3S CODE SIGNALS



# RULES

- Higher Timeframe Titan Levels
- 3S CODE Signals
- **TPI Divergence Signals**
- Candlestick Confirmations

# TPI DIVERGENCE



# RULES

- Higher Timeframe Titan Levels
- 3S CODE Signals
- TPI Divergence Signals
- **Candlestick Confirmations**

# CANDLESTICK CONFIRMATIONS

## BULLISH

- Hammer/Pin



- Engulfing



- Tweezers



- Morning Star



# CANDLESTICK CONFIRMATIONS

## BEARISH

- Hammer/Pin



- Engulfing



- Tweezers



- Evening Star



# CANDLESTICK CONFIRMATIONS

## INDECISION

- Spinners



- Doji



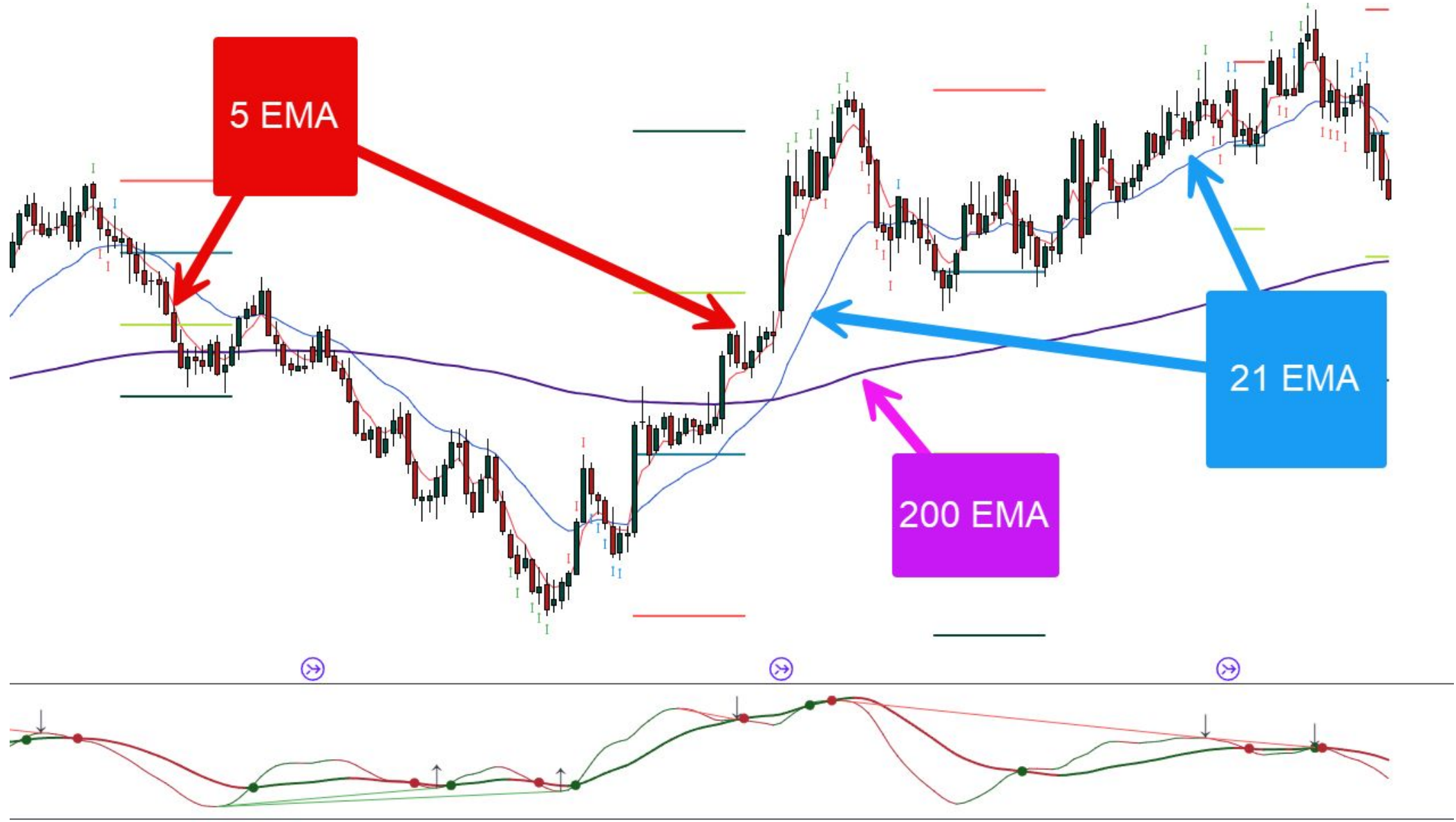
# CONFLUENCE 'ADD-ONS'

- **Moving Averages**
- Fibonacci

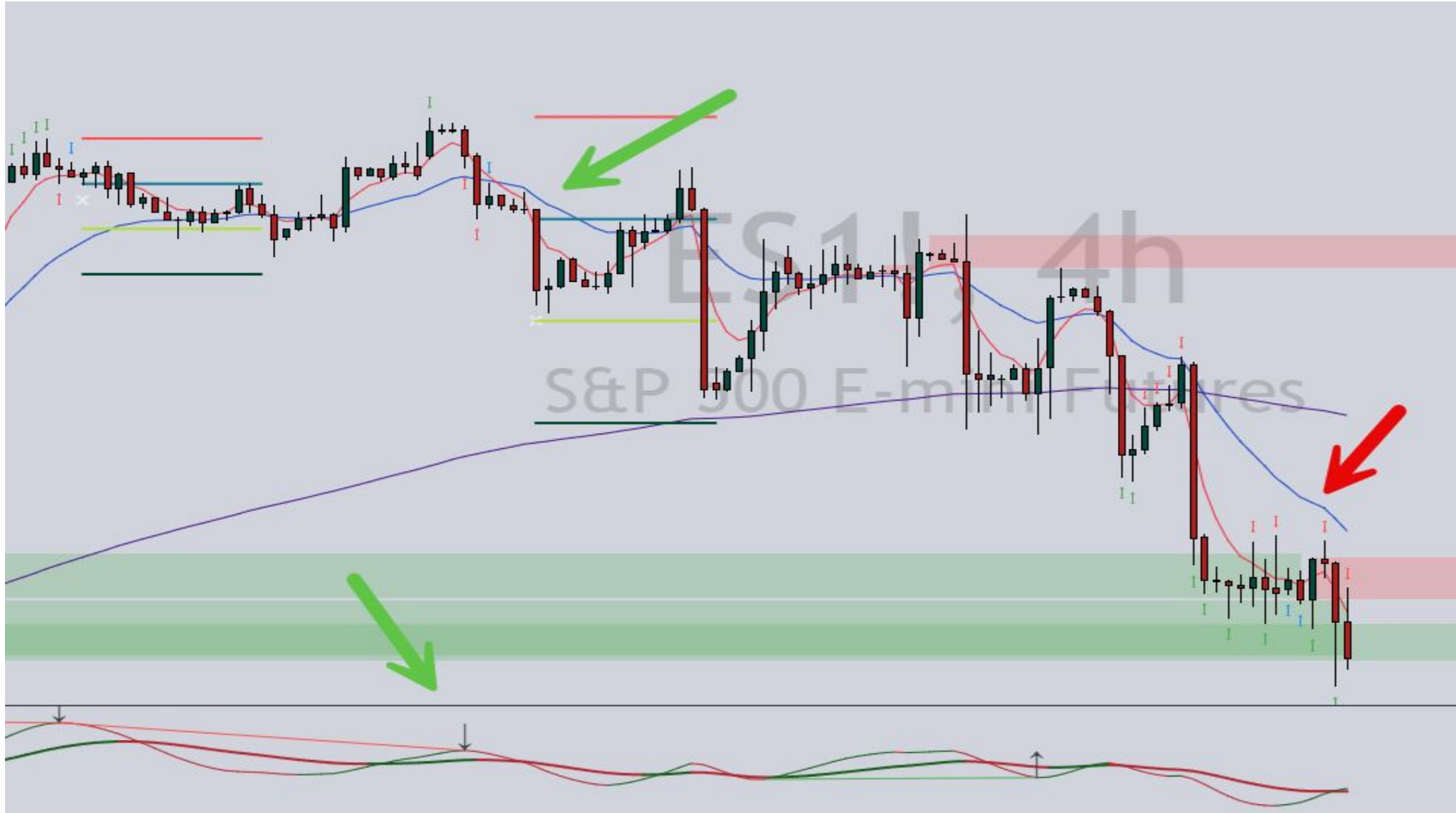
# MOVING AVERAGES

- 5/21 EMA: Short-term Timing
- 200 EMA: Longer-term Trend

# MOVING AVERAGES



# MOVING AVERAGES



# CONFLUENCE 'ADD-ONS'

- Moving Averages
- **Fibonacci**

# FIBONACCI

- .50
- .618
- .786

# FIBONACCI

- EQUILIBRIUM (50)
- DISCOUNT (618, 786 when BUYING)
- PREMIUM (618, 786 when SELLING)

# EQUILIBRIUM



# FIBONACCI

- EQUILIBRIUM (50)
- DISCOUNT (618, 786 when **BUYING**)
- PREMIUM (618, 786 when **SELLING**)

# DISCOUNT



# FIBONACCI

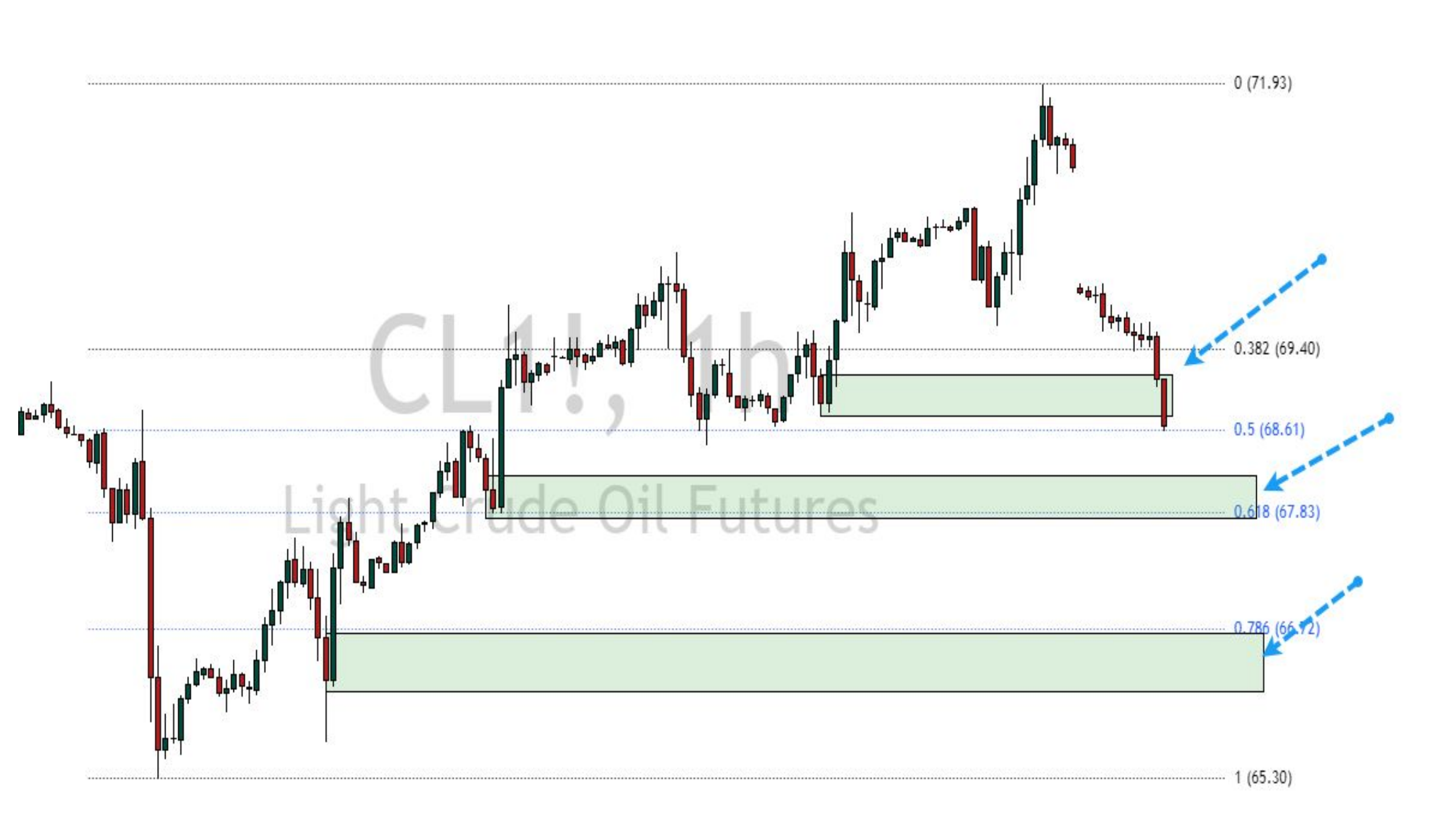
- EQUILIBRIUM (50)
- DISCOUNT (618, 786 when **BUYING**)
- **PREMIUM (618, 786 when SELLING)**

# PREMIUM











CL1!, 5

Light Crude Oil Futures

# CANDLE REVERSAL



# 3S CODE

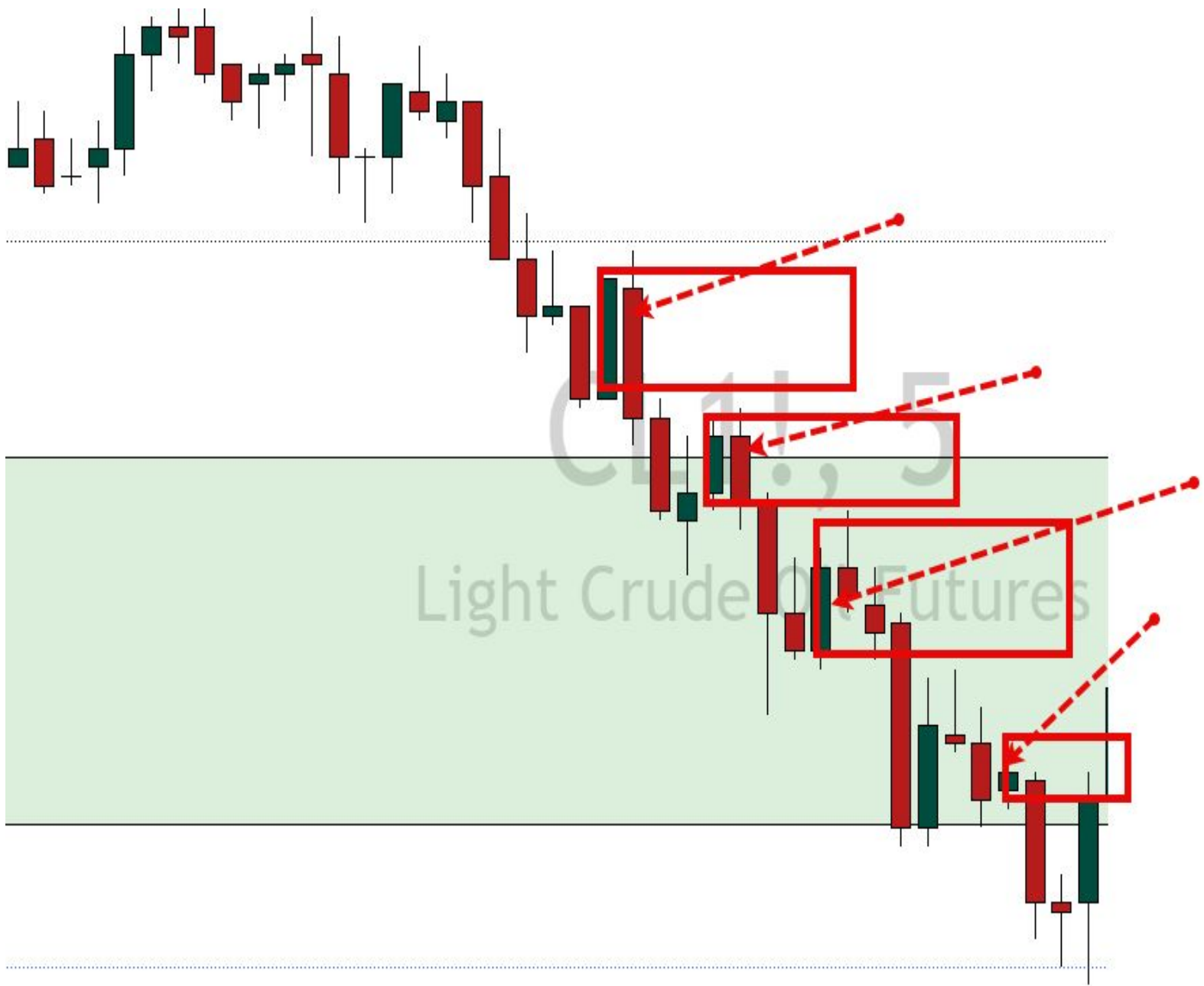


0.618 (67.82)

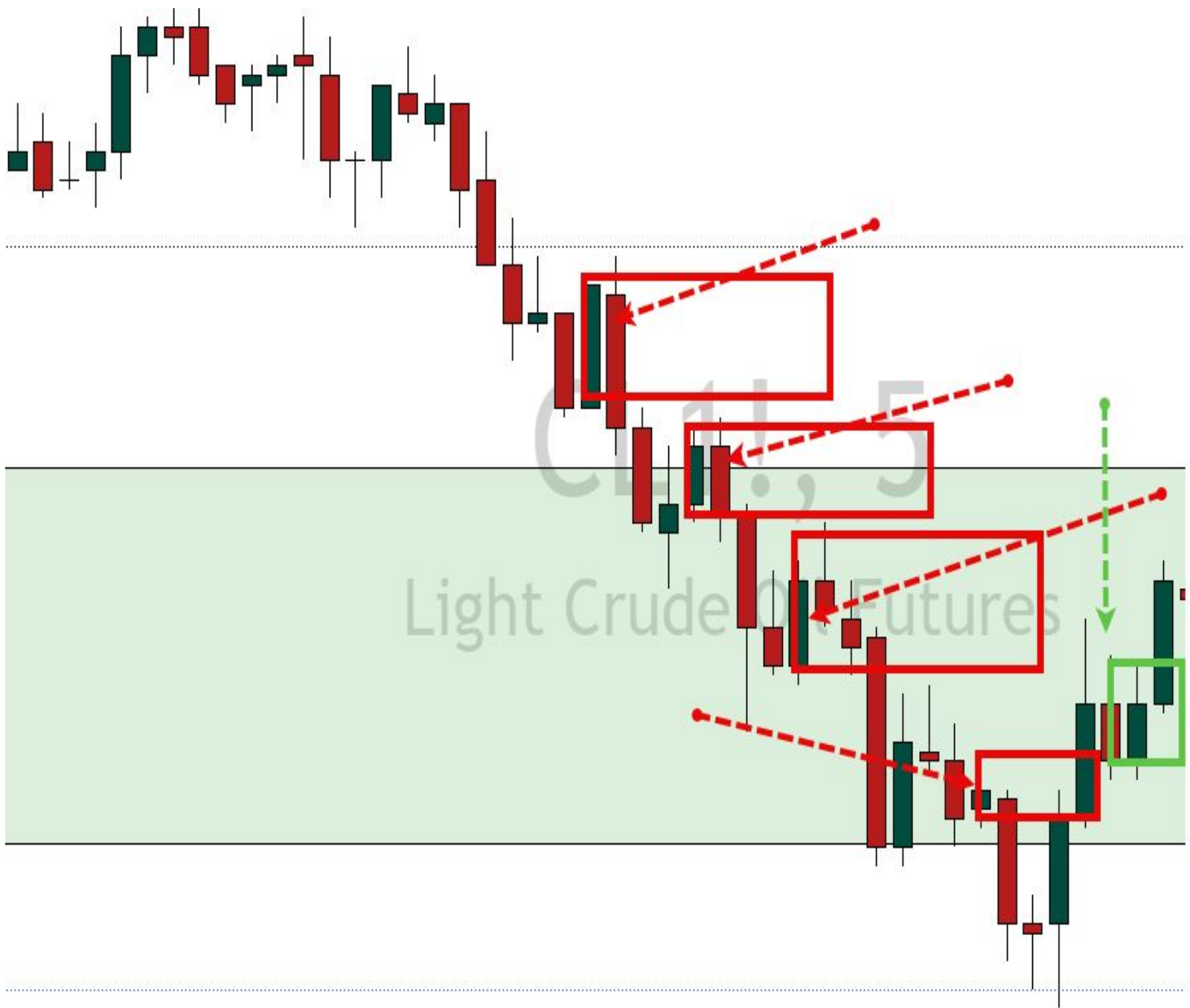
# BULLISH TPI MOMENTUM



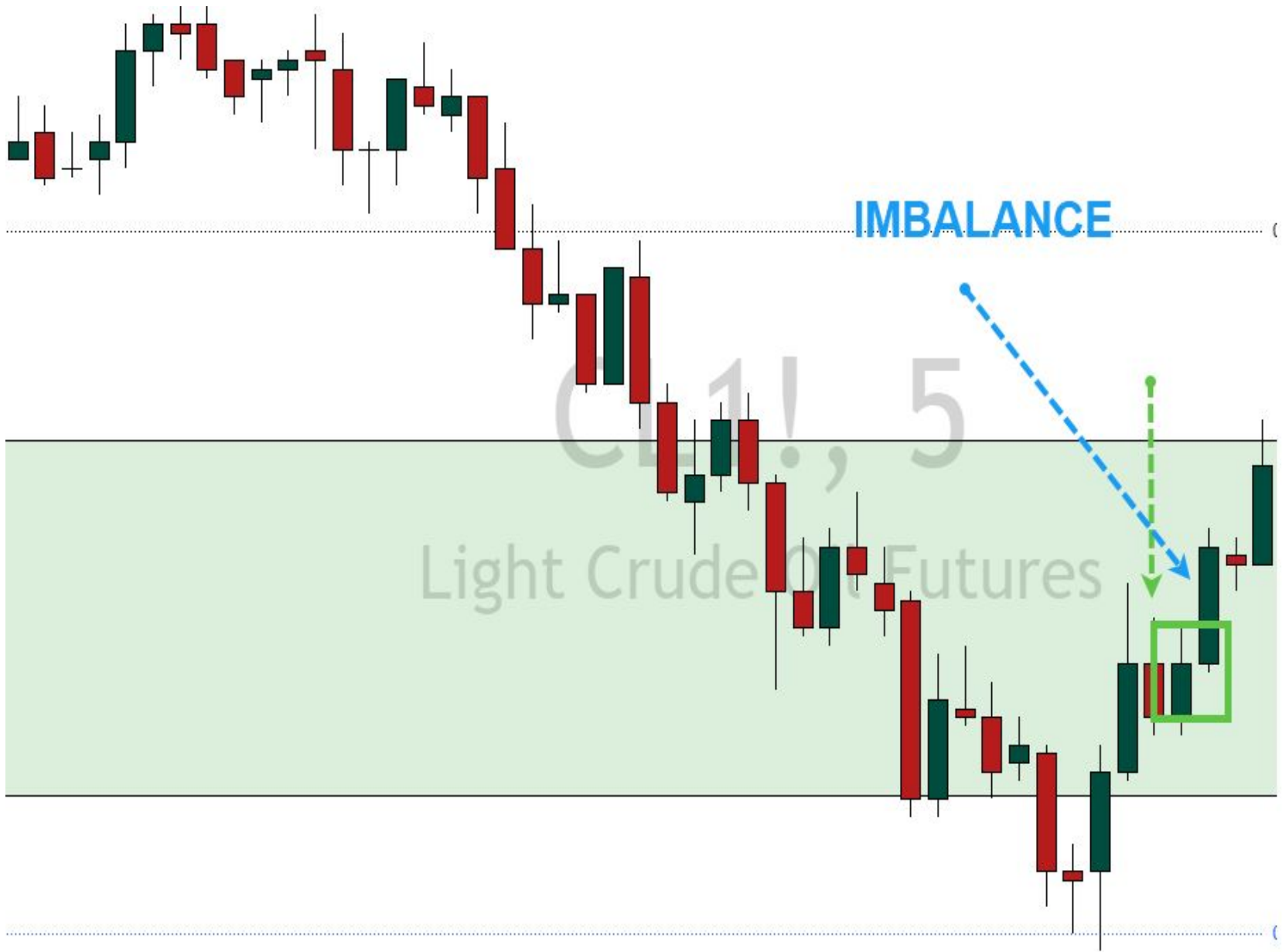
**WANT A BETTER ENTRY?**

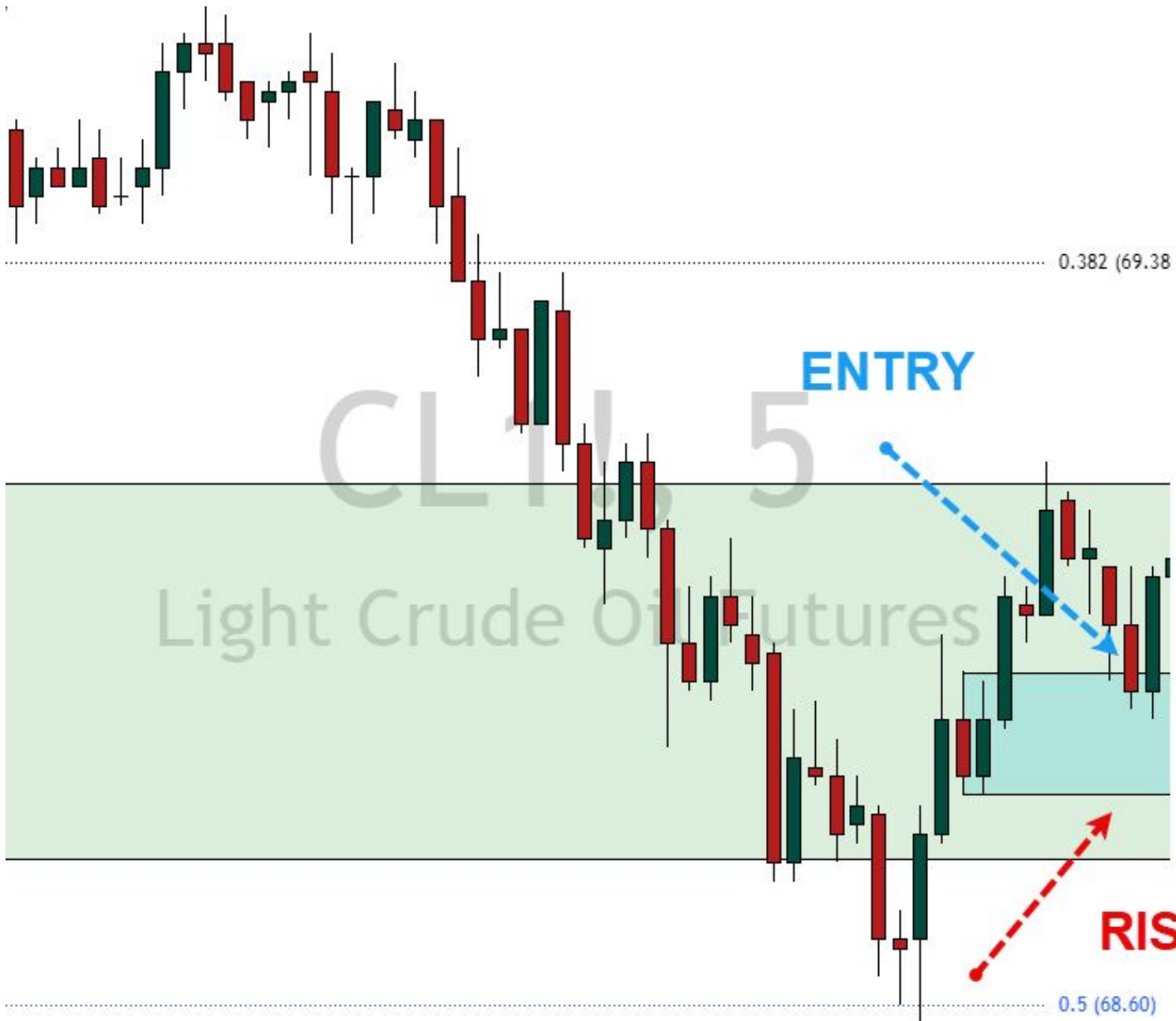


Crude Oil, 5  
Light Crude Oil Futures



Crude Oil, 5  
Light Crude Oil Futures







CL1!, 5  
Light Crude Oil Futures



ESZ2024, 1h

E-mini S&P 500 Futures (Dec 2024)



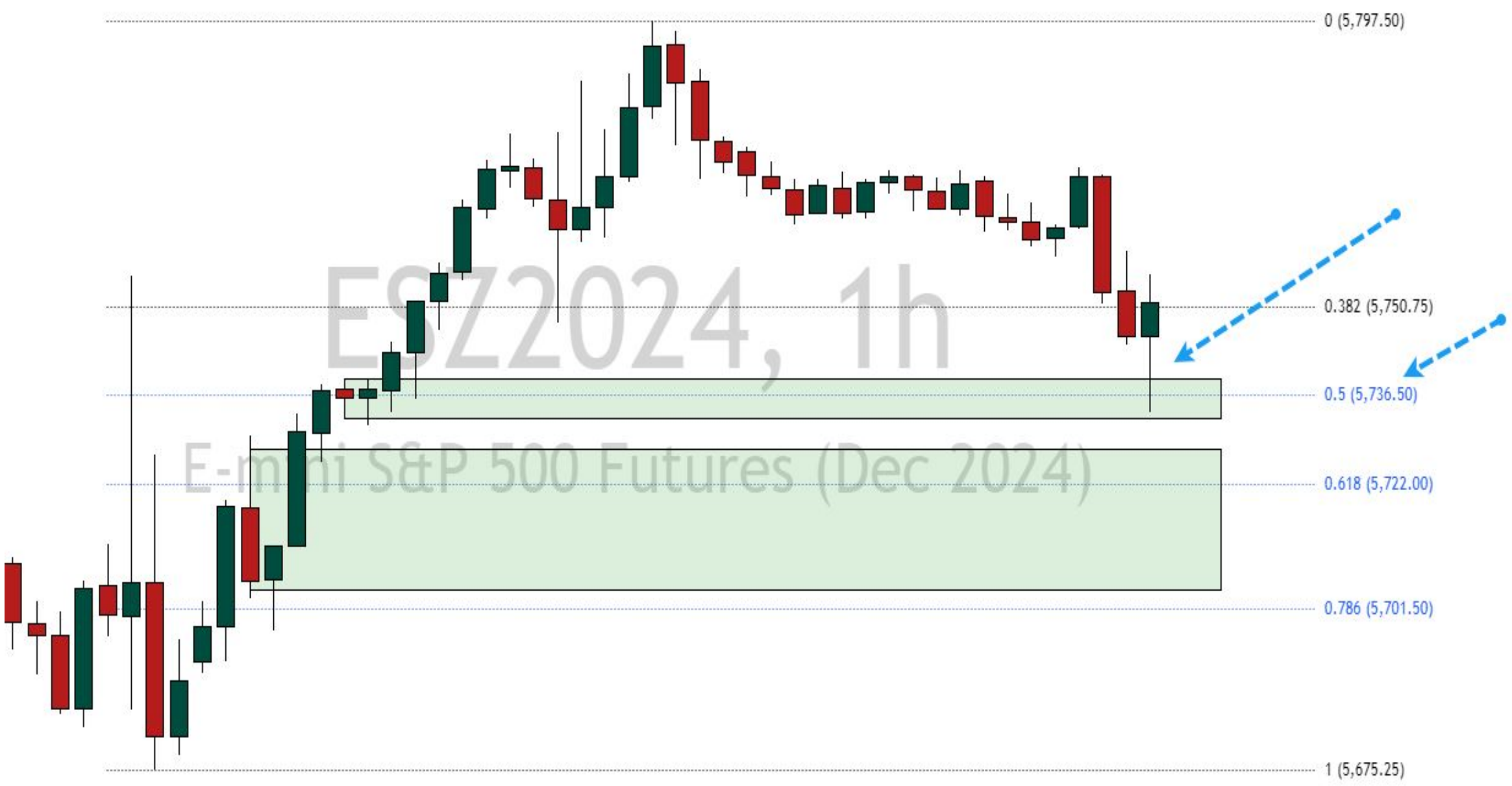
ESZ2024, 1h

E-mini S&P 500 Futures (Dec 2024)

ESZ2024, 1h

E-mini S&P 500 Futures (Dec 2024)





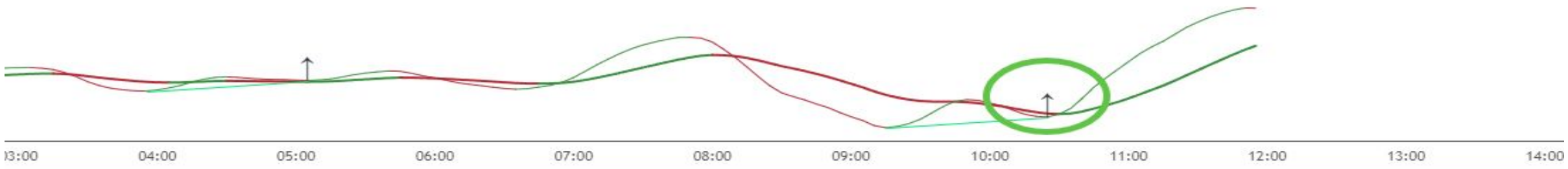
ESZ2024, 1h

E-mini S&P 500 Futures (Dec 2024)

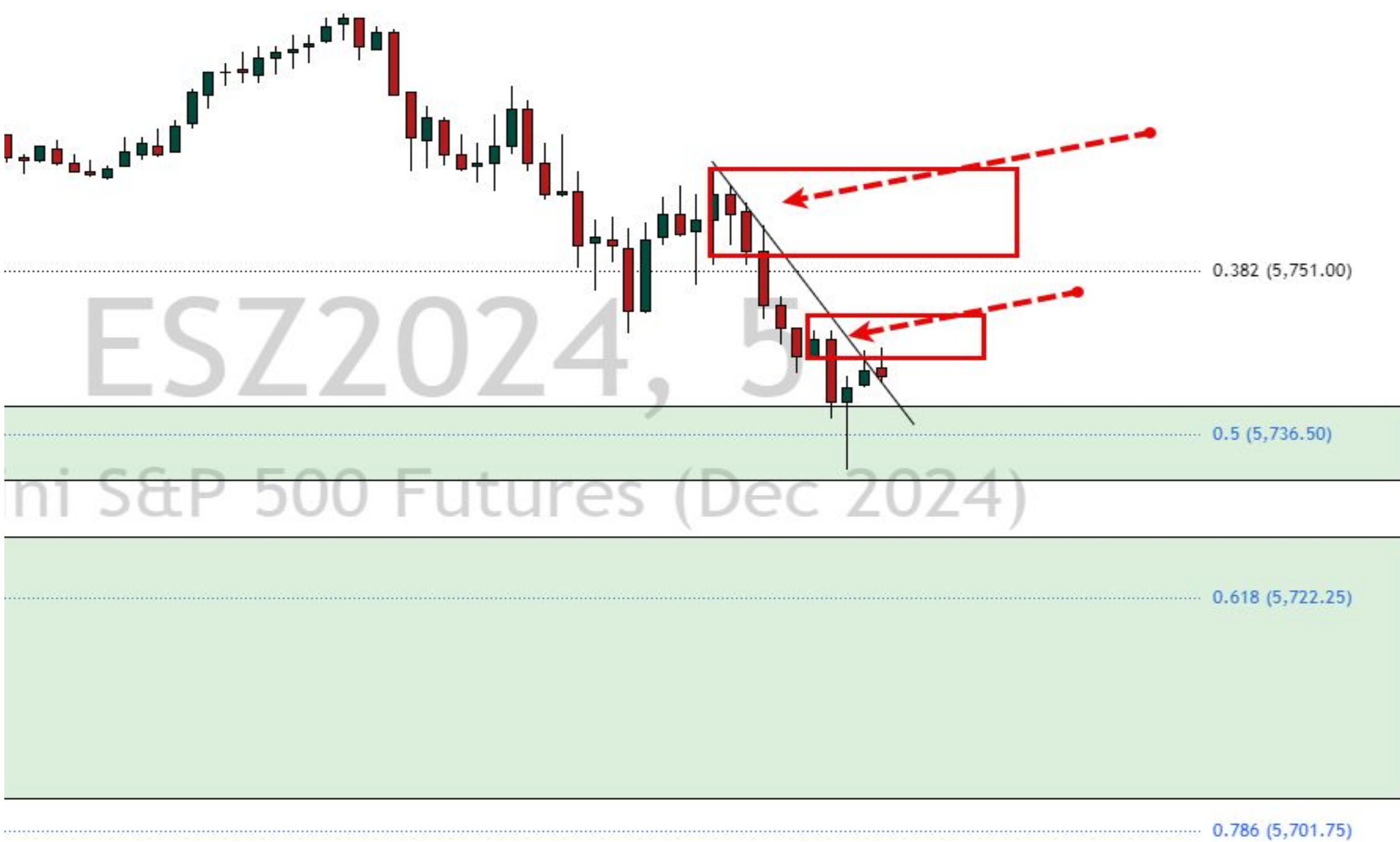


ESZ2024, 1h

E-mini S&P 500 Futures (Dec 2024)



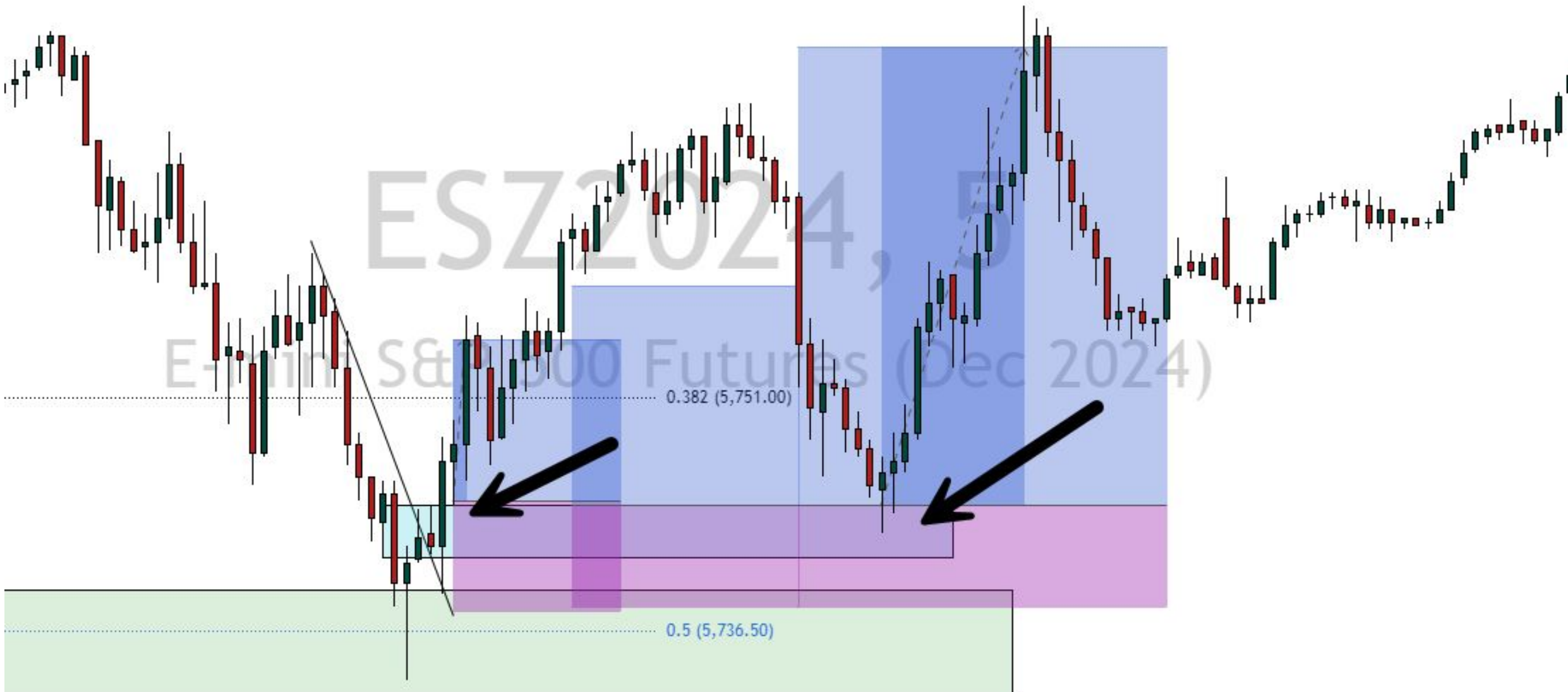
**WANT A BETTER ENTRY?**





ESZ2024,5

E-mini S&P 500 Futures (Dec 2024)



ESZ2024,5

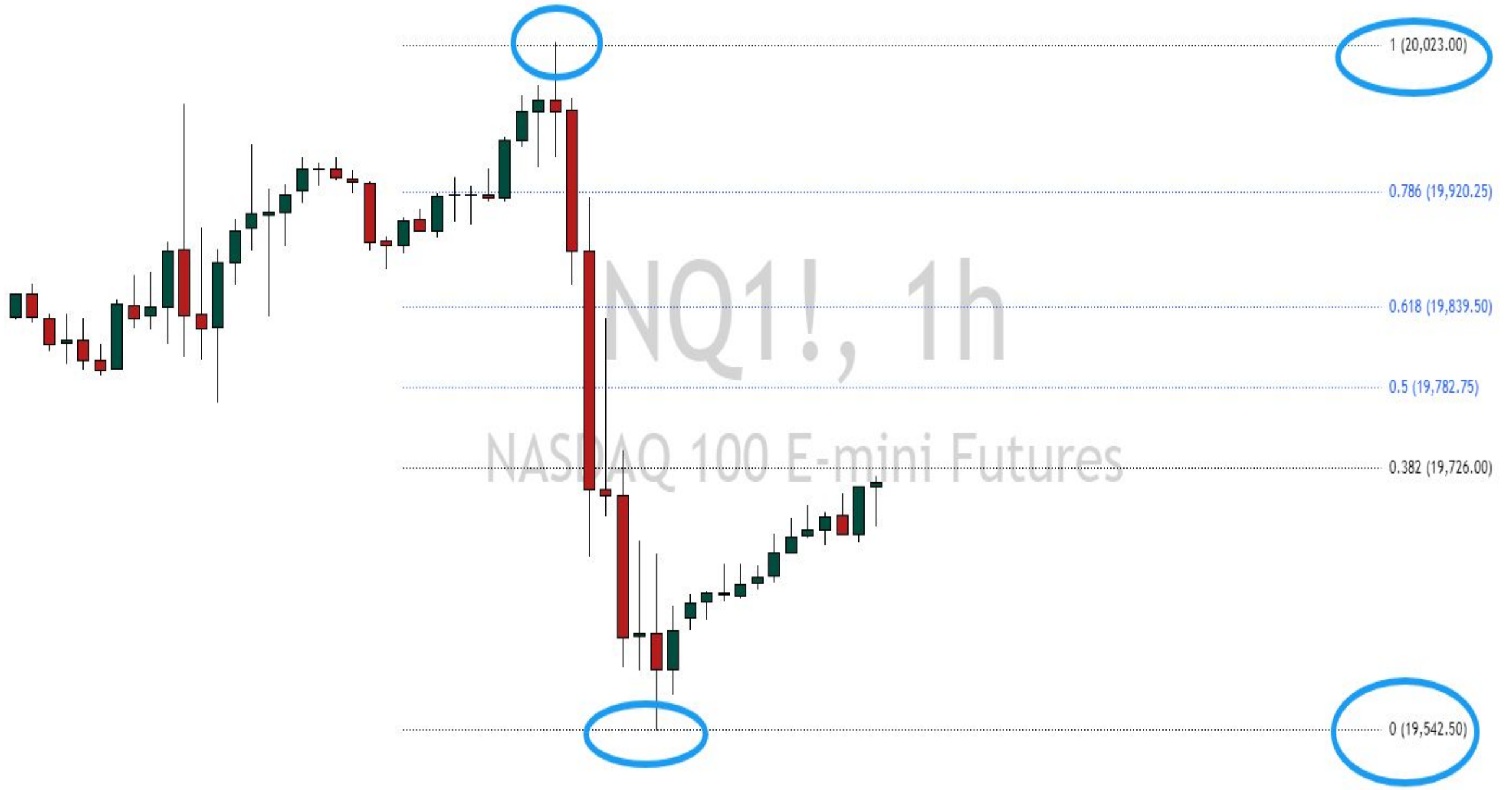
E-mini S&P 500 Futures (Dec 2024)

0.382 (5,751.00)

0.5 (5,736.50)



NQ1! 1h  
NASDAQ 100 E-mini Futures



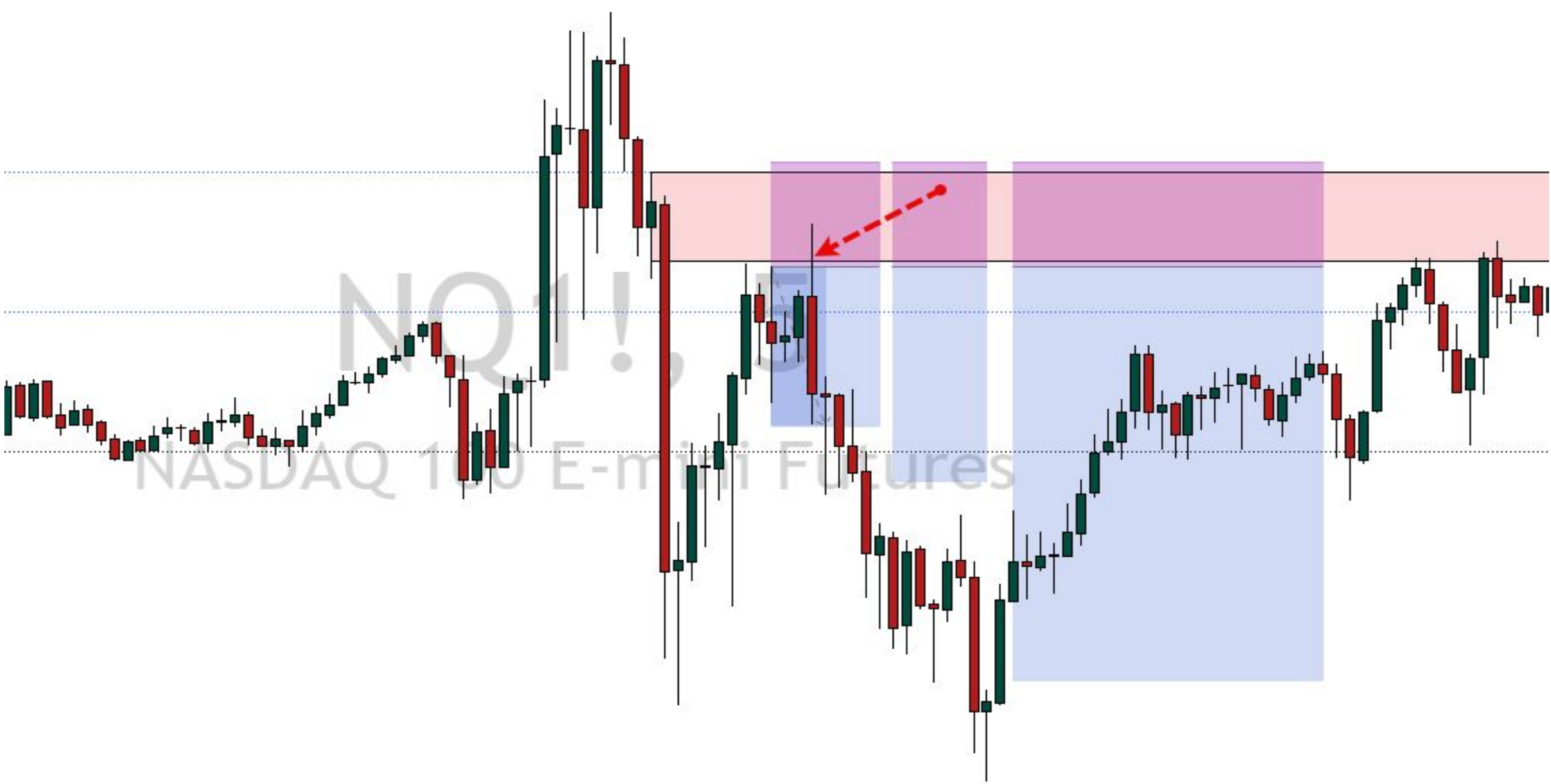
NQ1!, 1h  
NASDAQ 100 E-mini Futures





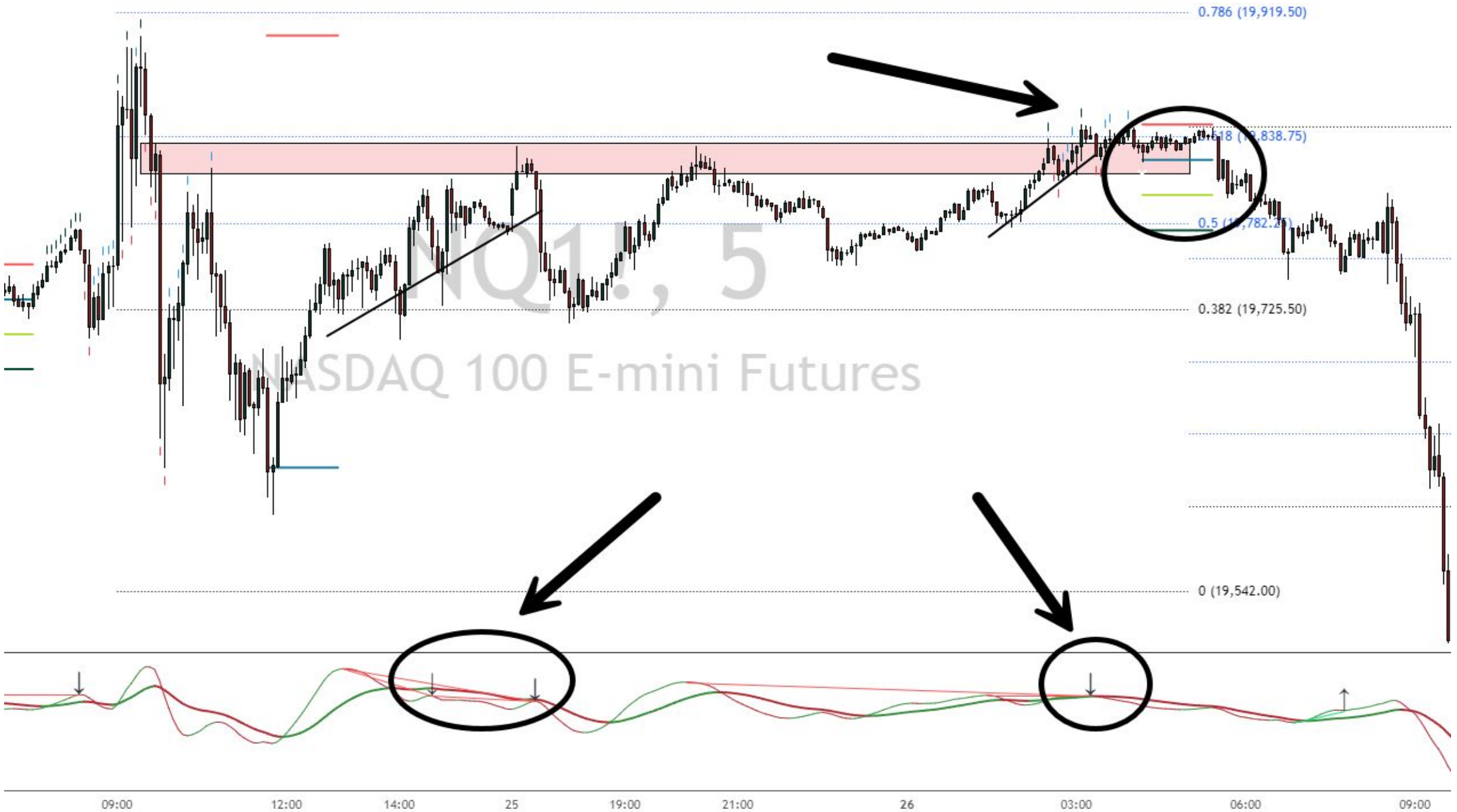


**Lows taken - demand taken out**



NQ!

NASDAQ 100 E-mini Futures





NQ1! 1h  
NASDAQ 100 E-mini Futures



0.780 (19,759.25)

0.618 (19,692.00)

0.5 (19,644.75)

0.382 (19,597.50)

0 (19,444.50)



NQ1!., 5  
NASDAQ 100 mini Futures

U. /80 (19,759.25)

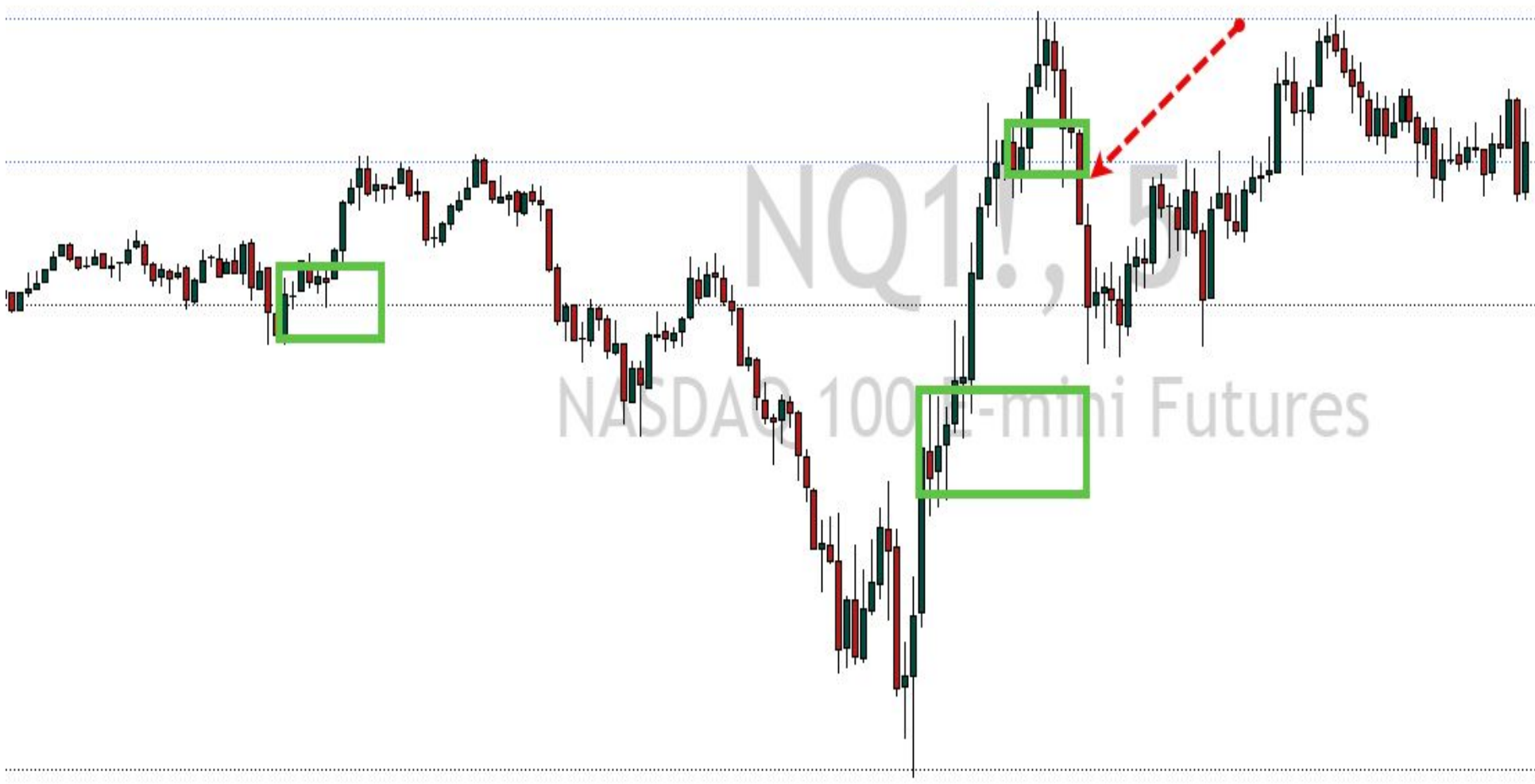
### Swing low taken - demand taken out

0.618 (19,692.00)

0.5 (19,644.75)

0.382 (19,597.50)

0 (19,444.50)



0.780 (19,759.25)

New supply - we can enter here

0.618 (19,692.00)

0.5 (19,644.75)

0.382 (19,597.50)

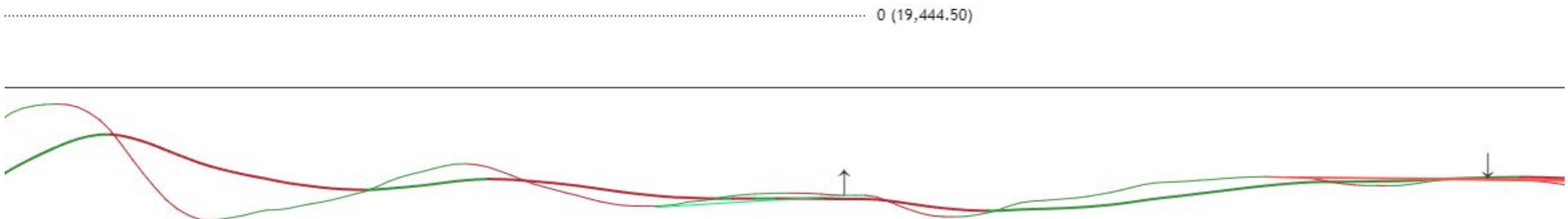
0 (19,444.50)



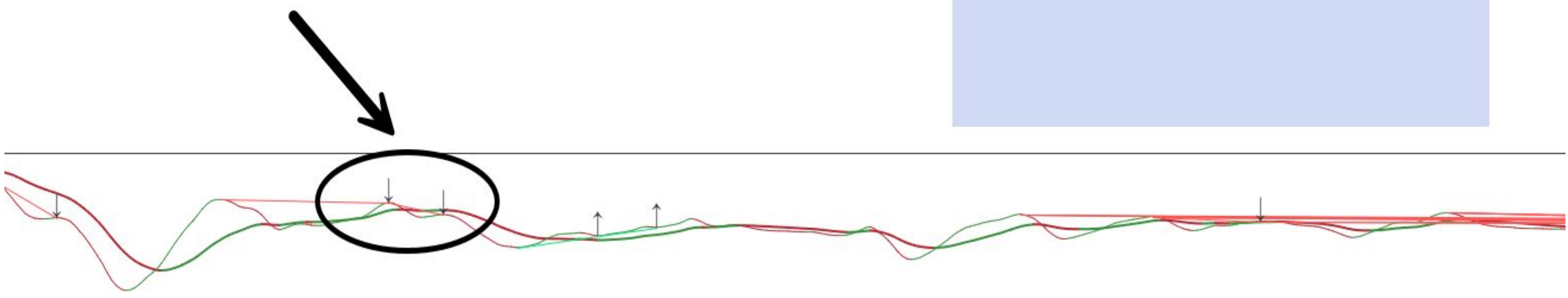




NQ1!, 5  
NASDAQ 100 E-mini Futures



0 (19,444.50)



# **KEY TAKEAWAYS**

# HIGH PROBABILITY SETUPS

- Titan Levels
- Discount & Premium
- Imbalances
- 3S CODE, TPI, Candlestick, Flips

# ADDITIONAL NOTES

- Pick your timeframe
- Map your levels on current / higher timeframe
- Buy at EQ, Discount / Sell at EQ, Premium
- Confluence? Imbalances, Zones, Prior Swing Hi/Los? .....