

INSIDER MASTERMIND Chicago 2024



Silas Peters

TRADES
TRENDING

RISK DISCLAIMER

IMPORTANT NOTICE: No representation is being made that the use of this strategy or any system or trading methodology will generate profits. Past performance is not necessarily indicative of future results. There is substantial risk of loss associated with trading securities and options on equities. Only risk capital should be used to trade. Trading stocks, options, futures, forex, and securities are not suitable for everyone. Disclaimer: Futures, Options, Securities and Currency trading all have large potential rewards, but they also have large potential risk. You must be aware of the risks and be willing to accept them in order to invest in these markets. Don't trade with money you can't afford to lose. This website is neither a solicitation nor an offer to Buy/Sell futures, options, stocks, or currencies. No representation is being made that any account will or is likely to achieve profits or losses similar to those discussed on this web site. The past performance of any trading system or methodology is not necessarily indicative of future results.

CFTC RULE 4.41 – HYPOTHETICAL OR SIMULATED PERFORMANCE RESULTS HAVE CERTAIN LIMITATIONS. UNLIKE AN ACTUAL PERFORMANCE RECORD, SIMULATED RESULTS DO NOT REPRESENT ACTUAL TRADING. ALSO, SINCE THE TRADES HAVE NOT BEEN EXECUTED, THE RESULTS MAY HAVE UNDER-OR-OVER COMPENSATED FOR THE IMPACT, IF ANY, OF CERTAIN MARKET FACTORS, SUCH AS LACK OF LIQUIDITY. SIMULATED TRADING PROGRAMS IN GENERAL ARE ALSO SUBJECT TO THE FACT THAT THEY ARE DESIGNED WITH THE BENEFIT OF HINDSIGHT. NO REPRESENTATION IS BEING MADE THAT ANY ACCOUNT WILL OR IS LIKELY TO ACHIEVE PROFIT OR LOSSES SIMILAR TO THOSE SHOWN.

THREE-SESSION SWEEP SYSTEM

Day 2 - Session 2

MARKETS TRADED

- Emini SP (ES)
- Gold (GC)
- Crude Oil (CL)
- Eurocurrency (6E)

THREE SESSIONS

- Asia
- Europe
- New York

KEY TIMES

- Asia : 4PM - 1AM CT
- Europe: 1AM - 7AM CT
- New York: 7AM - 3PM CT

SESSION SWEEPS

- European Session: Sweep of Asia Hi/Lo
- New York Session: Sweep of Europe/Asia Hi/Lo

KEY LEVELS

- Asia : 4PM - 1AM CT
- Europe: 1AM - 7AM CT
- New York: 7AM - 3PM CT

ASIA / EUROPE SWEEP

ESM20



ASIA

EUROPE

NEW YORK

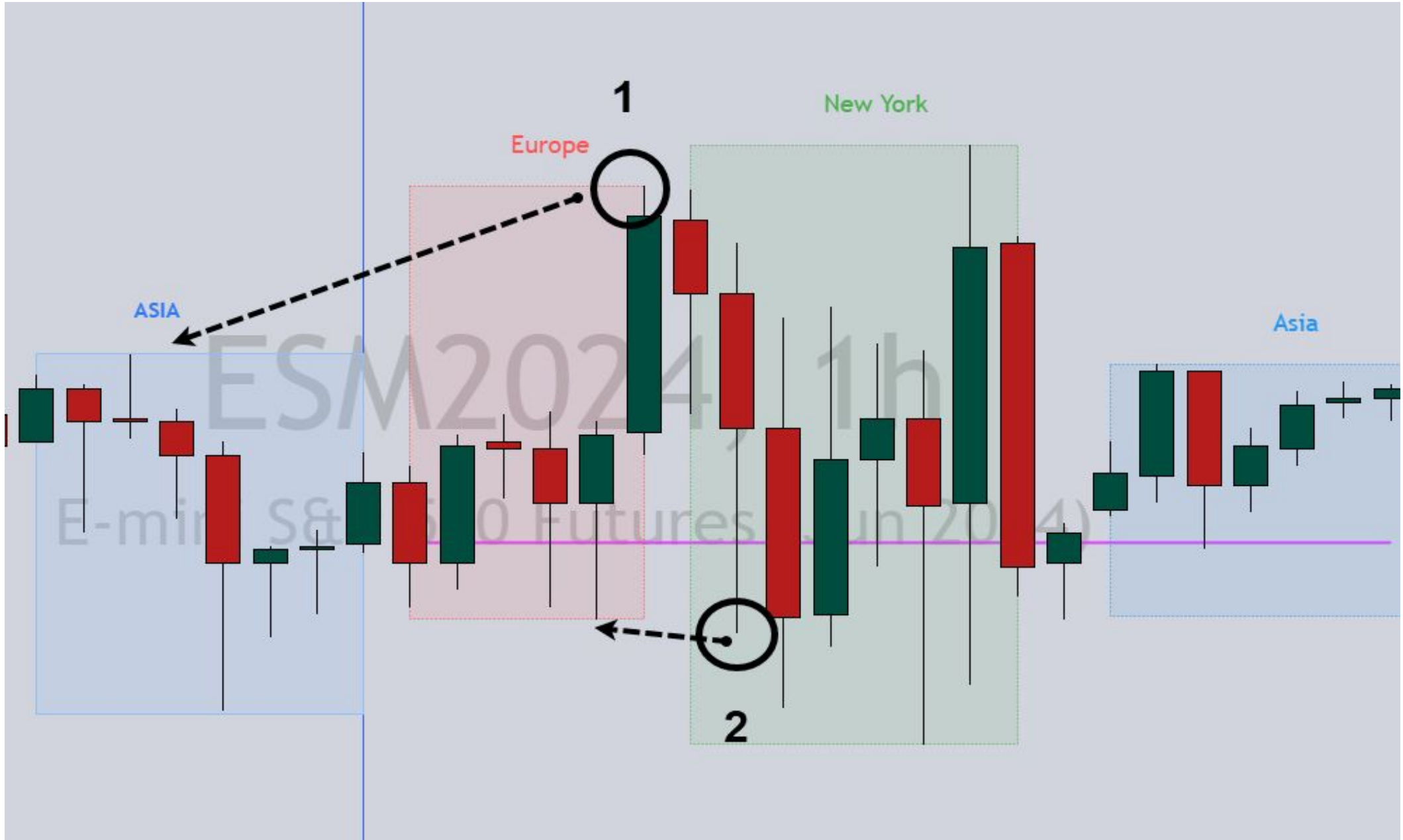
TUESDAY APR 16



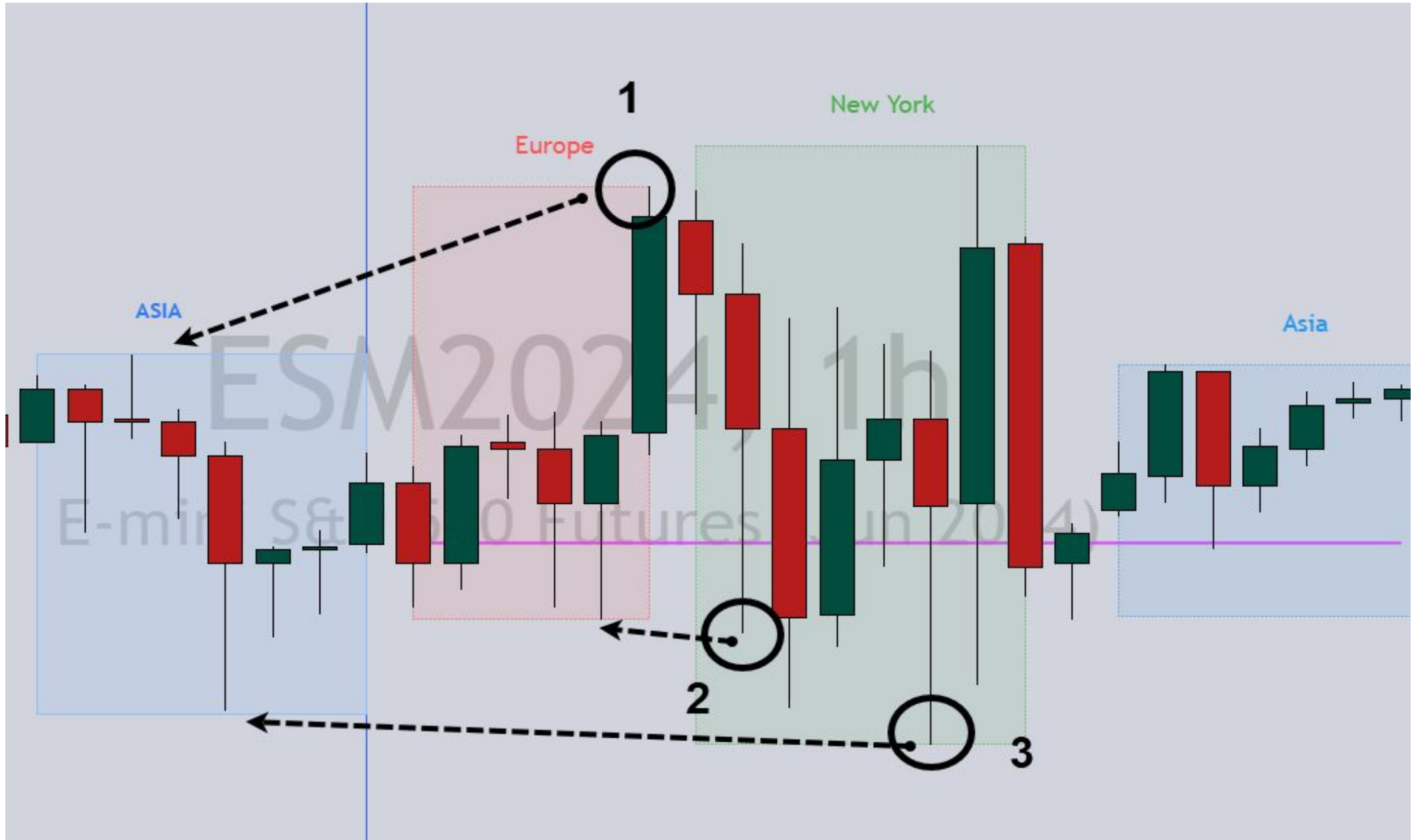
ASIA / EUROPE SWEEP



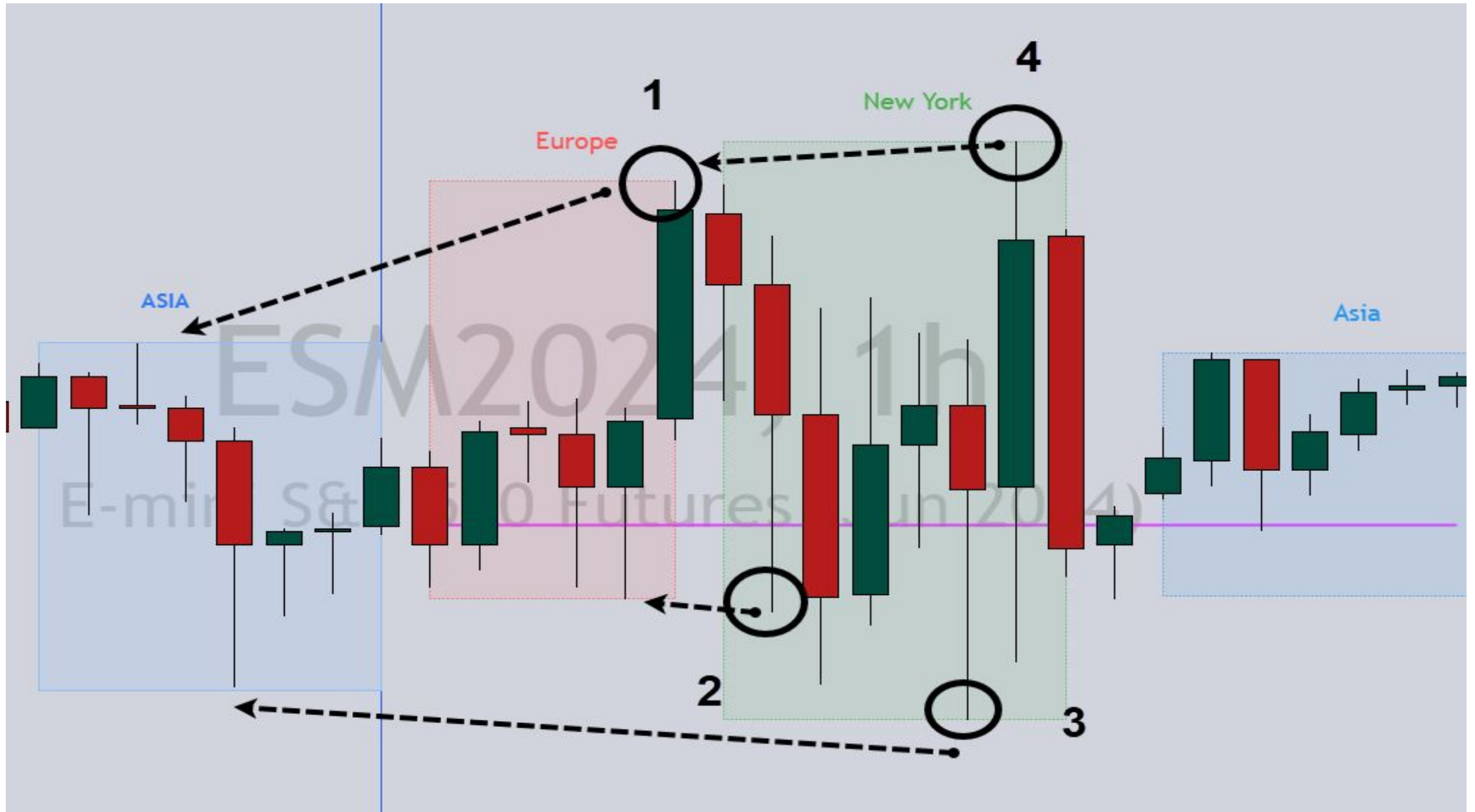
ASIA / EUROPE SWEEP



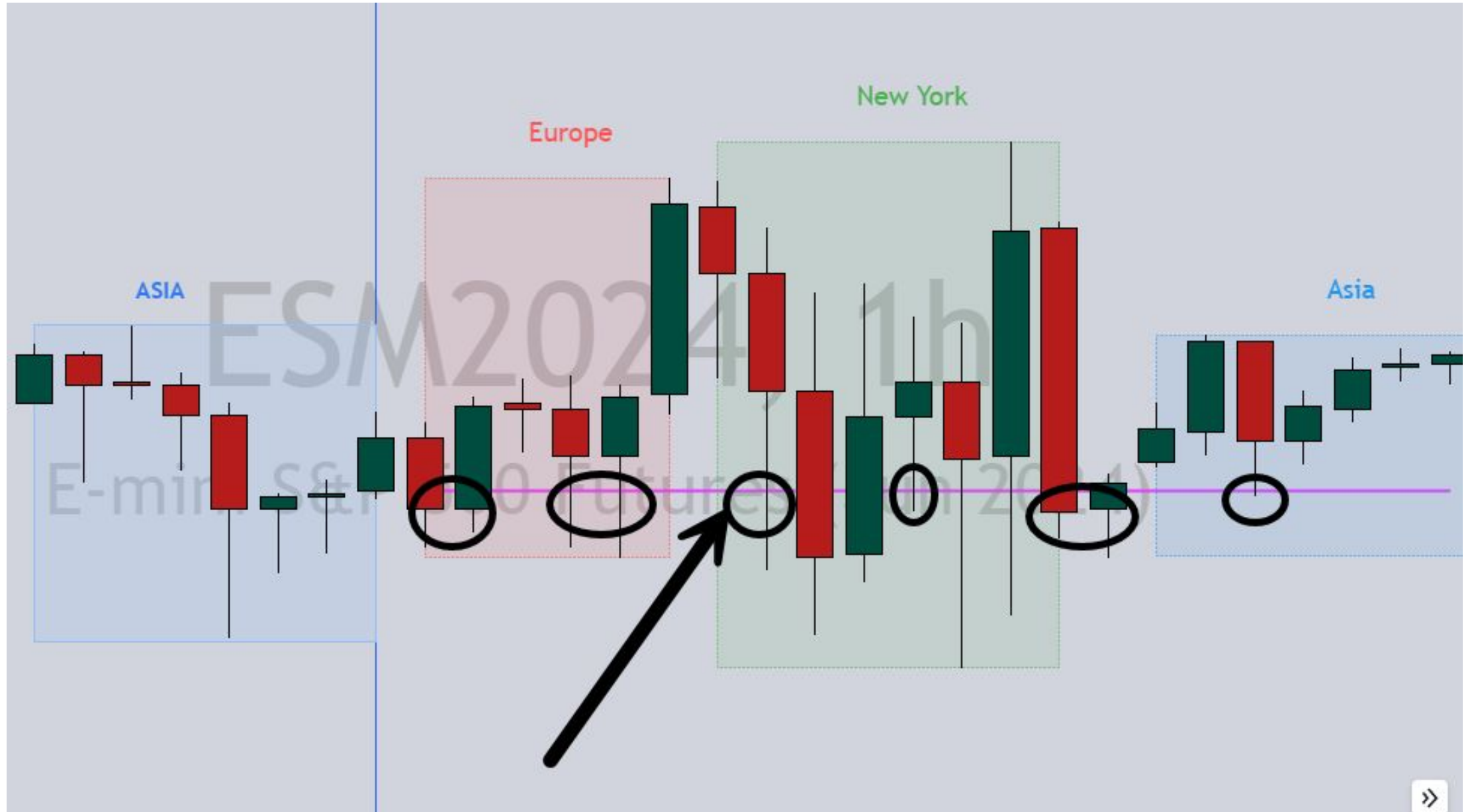
ASIA / EUROPE SWEEP



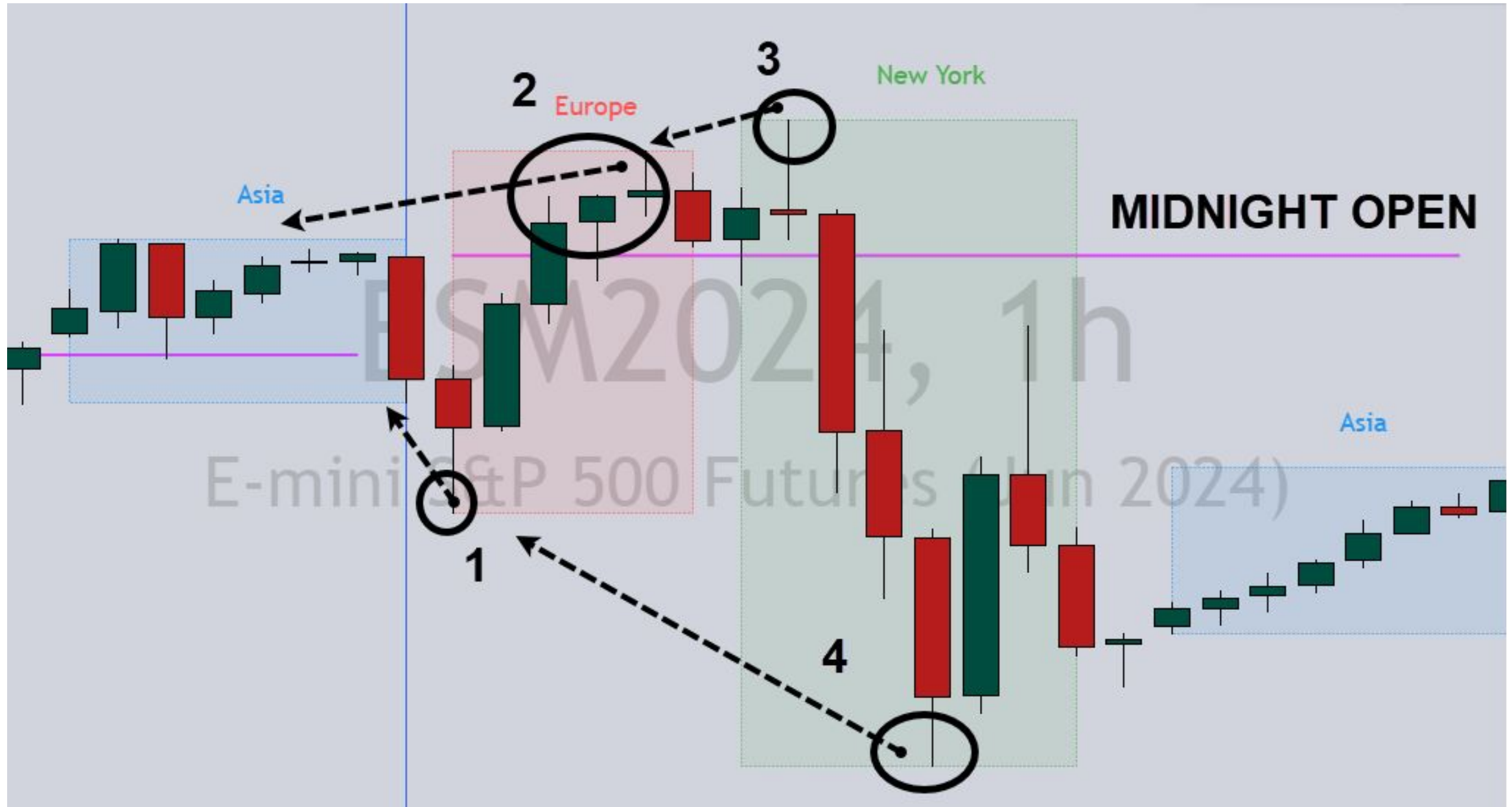
ASIA / EUROPE SWEEP



MIDNIGHT OPEN



WEDNESDAY APRIL 17



THURSDAY APRIL 18



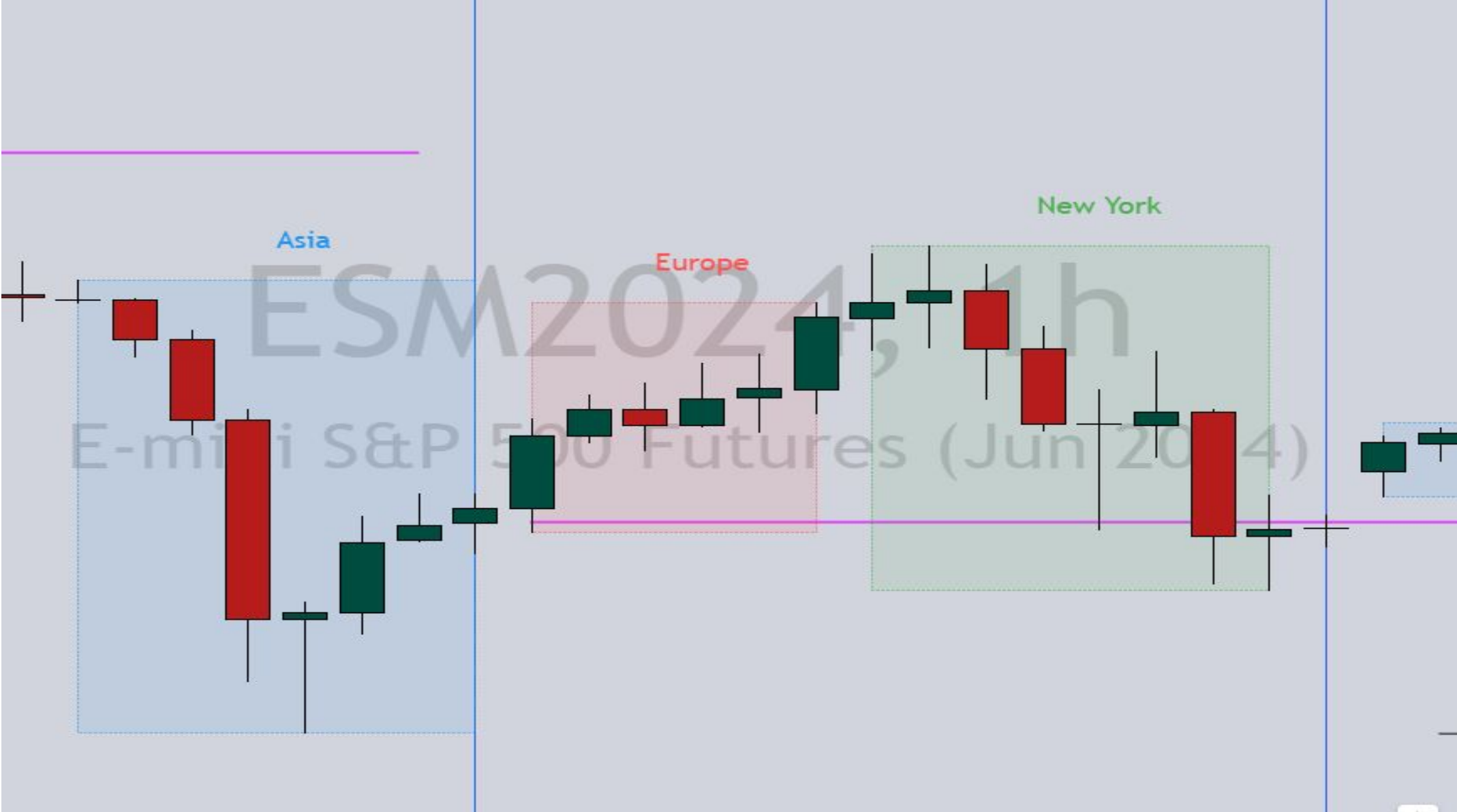
THURSDAY APRIL 18



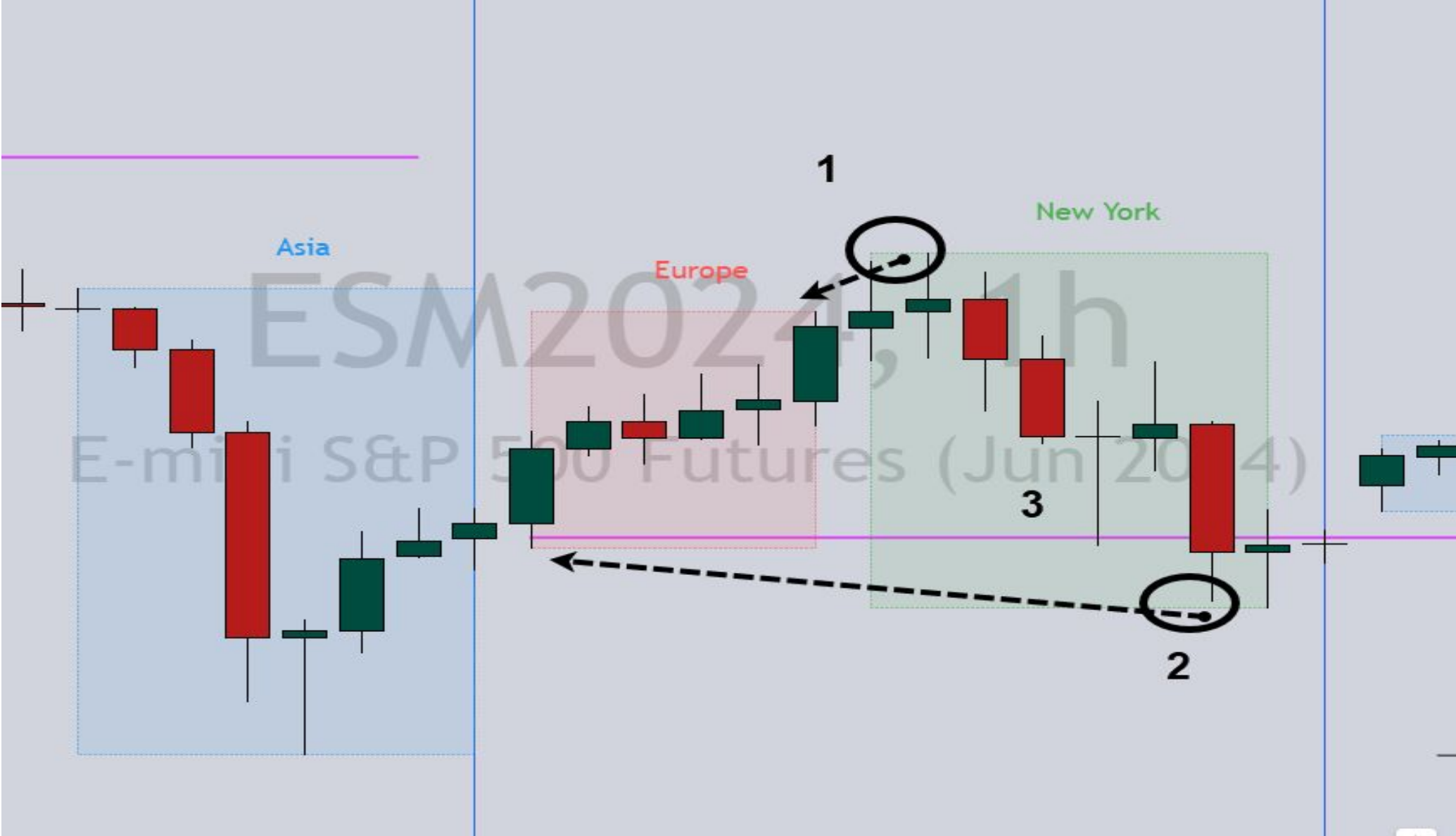
THURSDAY APRIL 18



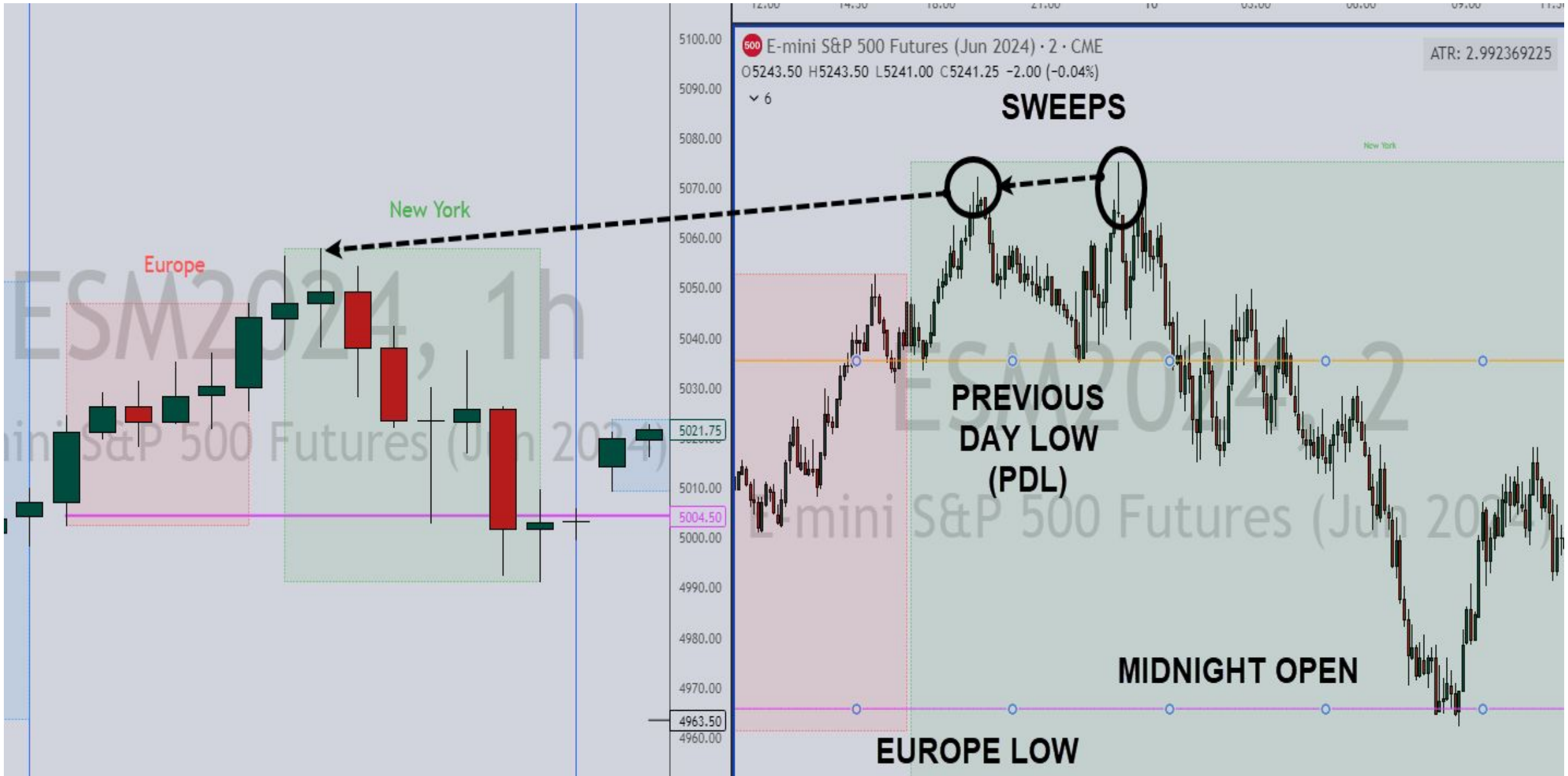
FRIDAY APRIL 19



FRIDAY APRIL 19



FRIDAY APRIL 19



FRIDAY APRIL 19



FRIDAY APRIL 19



SUMMARY

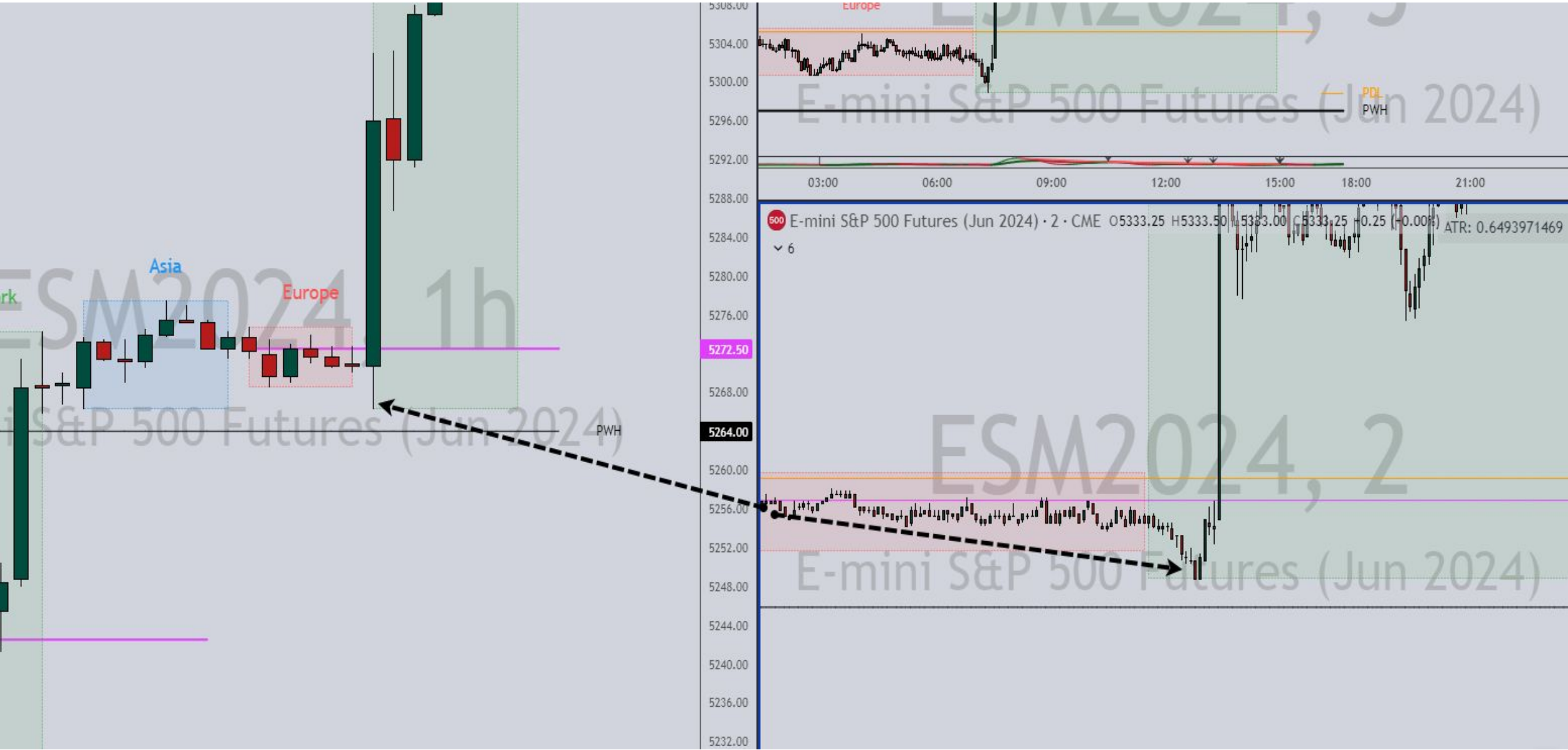
- SESSION HIGHS
- SESSION LOWS
- MIDNIGHT OPEN
- PDL/PDH

SUMMARY

- PWH/PWL
- PMH/PML
- NEW YORK OPEN (NYO) : 830AM ct / 930AM et
- TITAN LEVELS!

FRONT RUN THE NEWS?

WED MAY 15 (CPI)



FRI MAY 3 (NFP)



WED SEP 11 (CPI)



CHART TIME!

MORE SECRET SAUCE?

PROGRAM TRADING

- 90% of daily ES volume

PLAYERS

- UBS
- GOLDMAN
- CITADEL

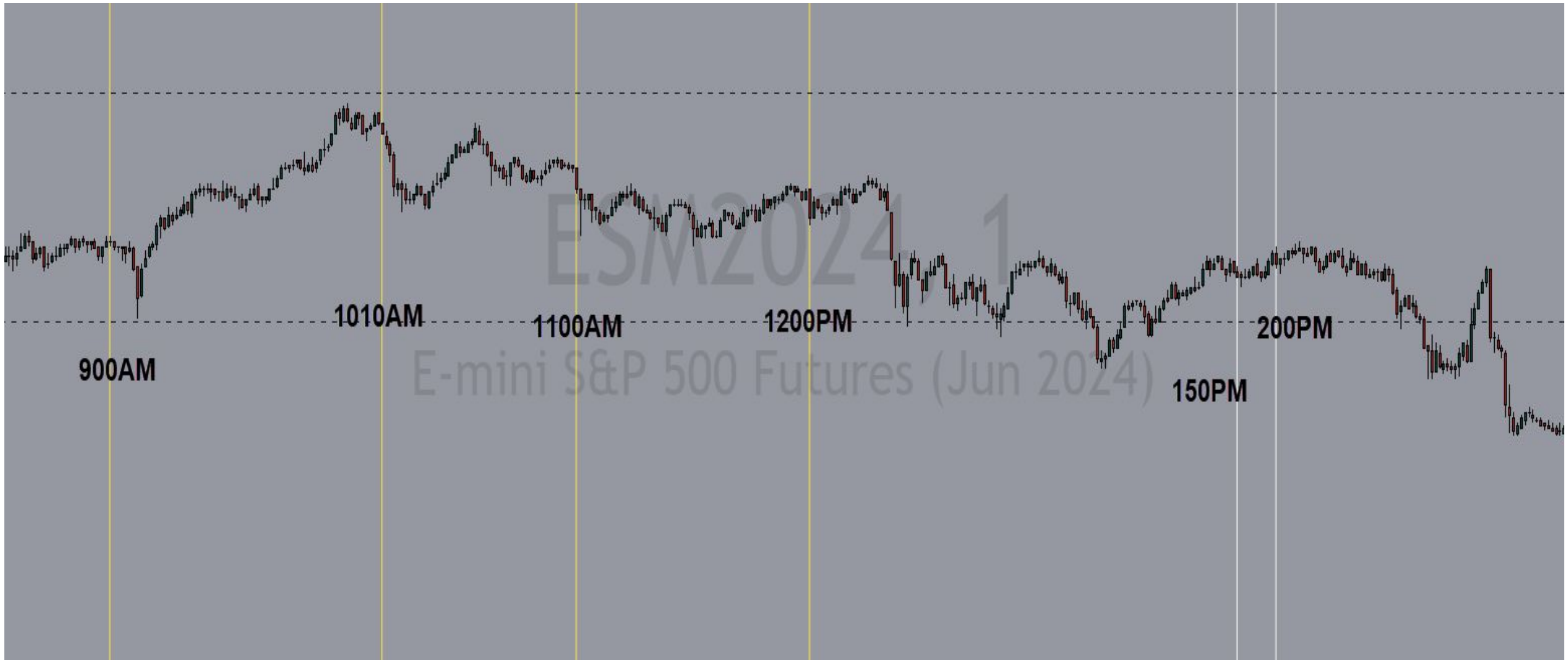
KEY TIMES (Central)

- 9:00-9:30 AM **Goldman
- **10:00-10:15 AM ; 10:10 AM **UBS**
- 11:00-12:00 **UBS, Goldman

KEY TIMES (Central)

- 1:30-2:00 PM **Goldman
- 1:50-1:55 PM **Citadel

TIME OF DAY



TIME OF DAY



TIME OF DAY



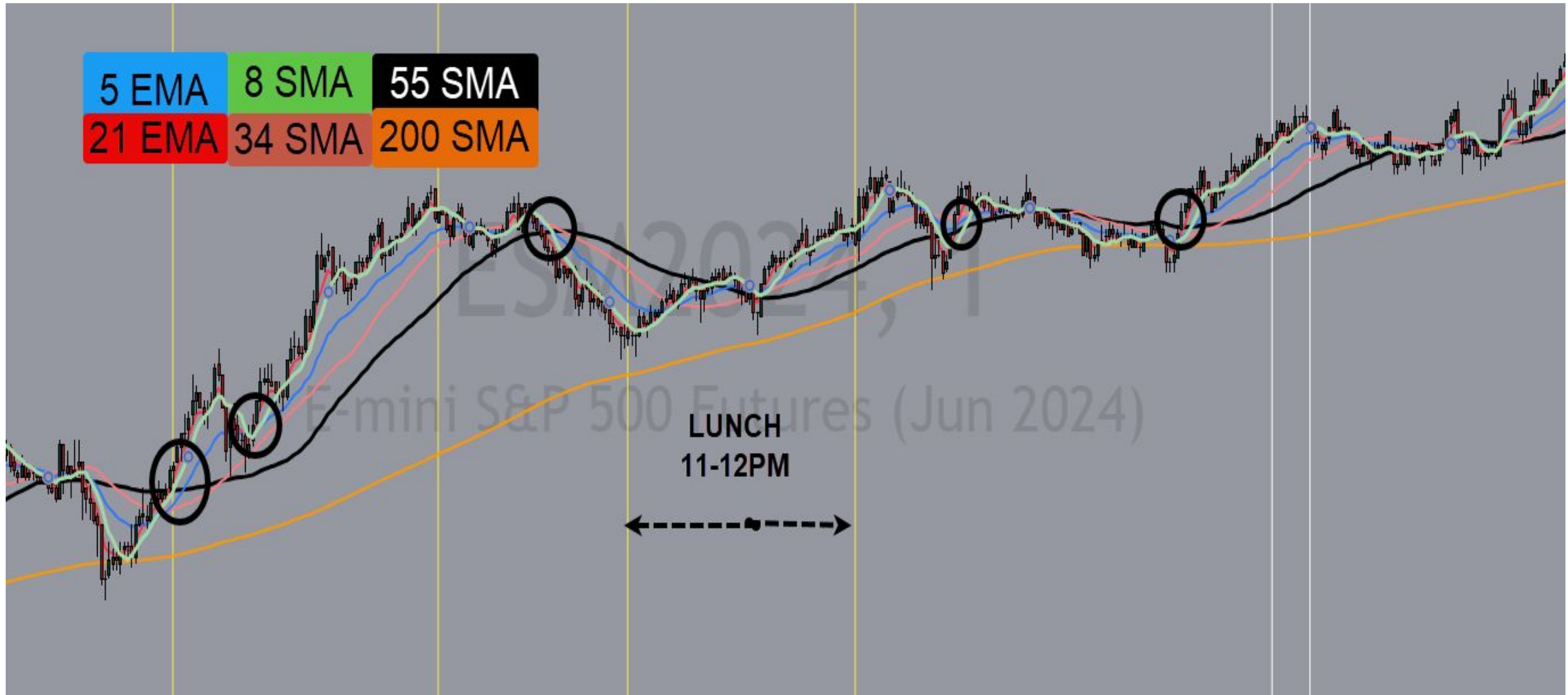
ALGOS & AVERAGES

- 8 SMA
- 34 SMA
- 55 SMA
- 200 SMA

ALGOS & AVERAGES



ALGOS & AVERAGES



ALGOS & AVERAGES



ALGOS & AVERAGES



ALGOS & AVERAGES



ALGOS & AVERAGES

