

INSIDER MASTERMIND Chicago 2024



Silas Peters

TRADES
TRENDING

RISK DISCLAIMER

IMPORTANT NOTICE: No representation is being made that the use of this strategy or any system or trading methodology will generate profits. Past performance is not necessarily indicative of future results. There is substantial risk of loss associated with trading securities and options on equities. Only risk capital should be used to trade. Trading stocks, options, futures, forex, and securities are not suitable for everyone. Disclaimer: Futures, Options, Securities and Currency trading all have large potential rewards, but they also have large potential risk. You must be aware of the risks and be willing to accept them in order to invest in these markets. Don't trade with money you can't afford to lose. This website is neither a solicitation nor an offer to Buy/Sell futures, options, stocks, or currencies. No representation is being made that any account will or is likely to achieve profits or losses similar to those discussed on this web site. The past performance of any trading system or methodology is not necessarily indicative of future results.

CFTC RULE 4.41 – HYPOTHETICAL OR SIMULATED PERFORMANCE RESULTS HAVE CERTAIN LIMITATIONS. UNLIKE AN ACTUAL PERFORMANCE RECORD, SIMULATED RESULTS DO NOT REPRESENT ACTUAL TRADING. ALSO, SINCE THE TRADES HAVE NOT BEEN EXECUTED, THE RESULTS MAY HAVE UNDER-OR-OVER COMPENSATED FOR THE IMPACT, IF ANY, OF CERTAIN MARKET FACTORS, SUCH AS LACK OF LIQUIDITY. SIMULATED TRADING PROGRAMS IN GENERAL ARE ALSO SUBJECT TO THE FACT THAT THEY ARE DESIGNED WITH THE BENEFIT OF HINDSIGHT. NO REPRESENTATION IS BEING MADE THAT ANY ACCOUNT WILL OR IS LIKELY TO ACHIEVE PROFIT OR LOSSES SIMILAR TO THOSE SHOWN.

“The market is a device for transferring money from the impatient to the patient.”

- WARREN BUFFETT

**“If you want to watch CNBC like the pros do,
turn the sound off! .”**

-UNKNOWN

DAY 1 RECAP

- Identifying Market Structure
- Order Blocks
- Liquidity

DAY 1 RECAP

- Imbalances
- Mitigation
- Flips
- Basic Entry Techniques

INSIDER MASTERMIND – DAY 2

- Mechanical Swing + Day Trade Model Templates
- Three-Session Sweep System

MECHANICAL SWING + DAY TRADE MODELS

Day 2 - Session 1

CORE SYSTEM: PRICE ACTION EDGE



TIMEFRAMES (PAE)

- Analysis
- Execution

WTF?

TIMEFRAME - ANALYSIS

POSITION / SWING

- Monthly / Weekly / Daily / 4H

SWING / DAY

- Weekly / Daily / 4H / 1H

INTRADAY / SCALP

- Daily / 4H / 1H / 15M...and lower

ANALYSIS (Swing/Position)



ANALYSIS (Swing)



ANALYSIS (Intraday)



TIMEFRAME - EXECUTION

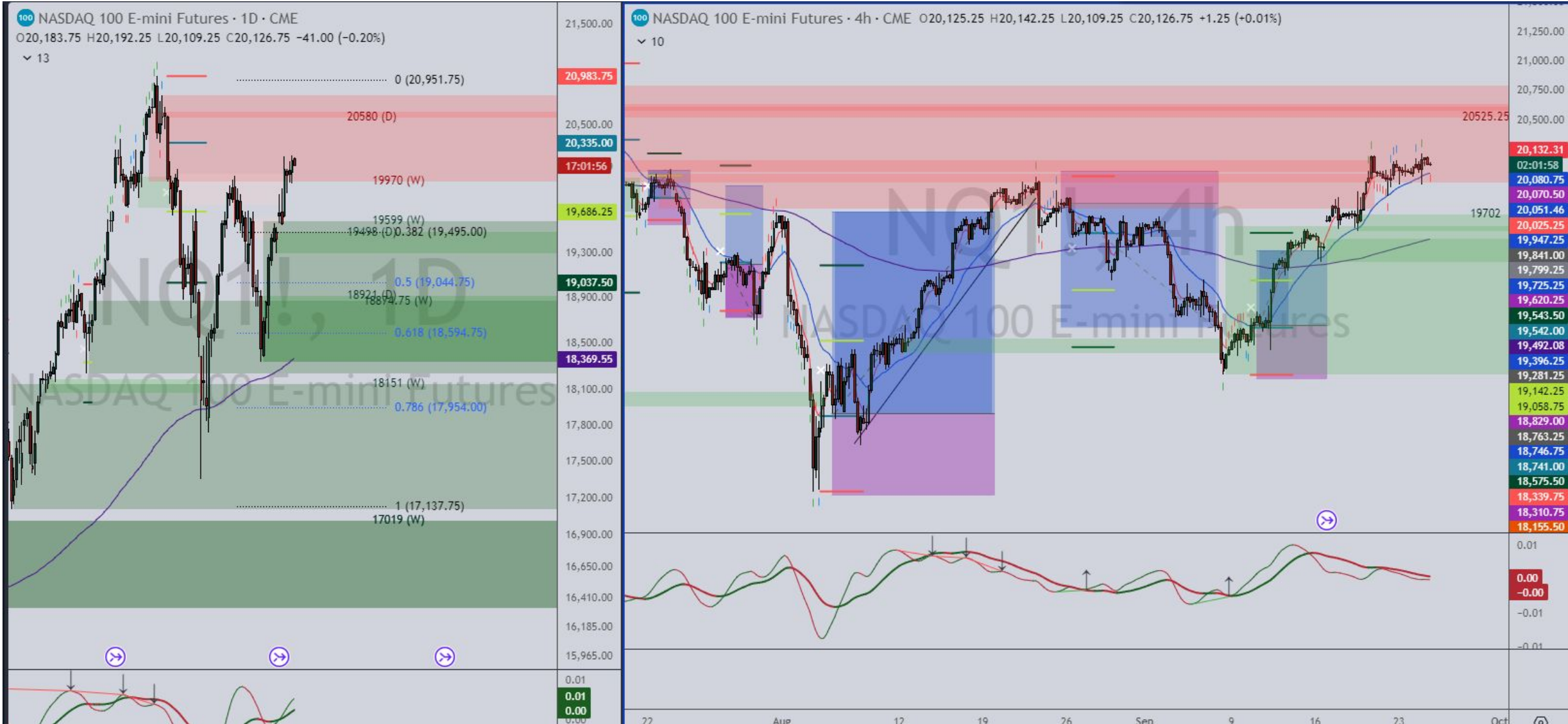
SWING

- Daily / 4H / 1H

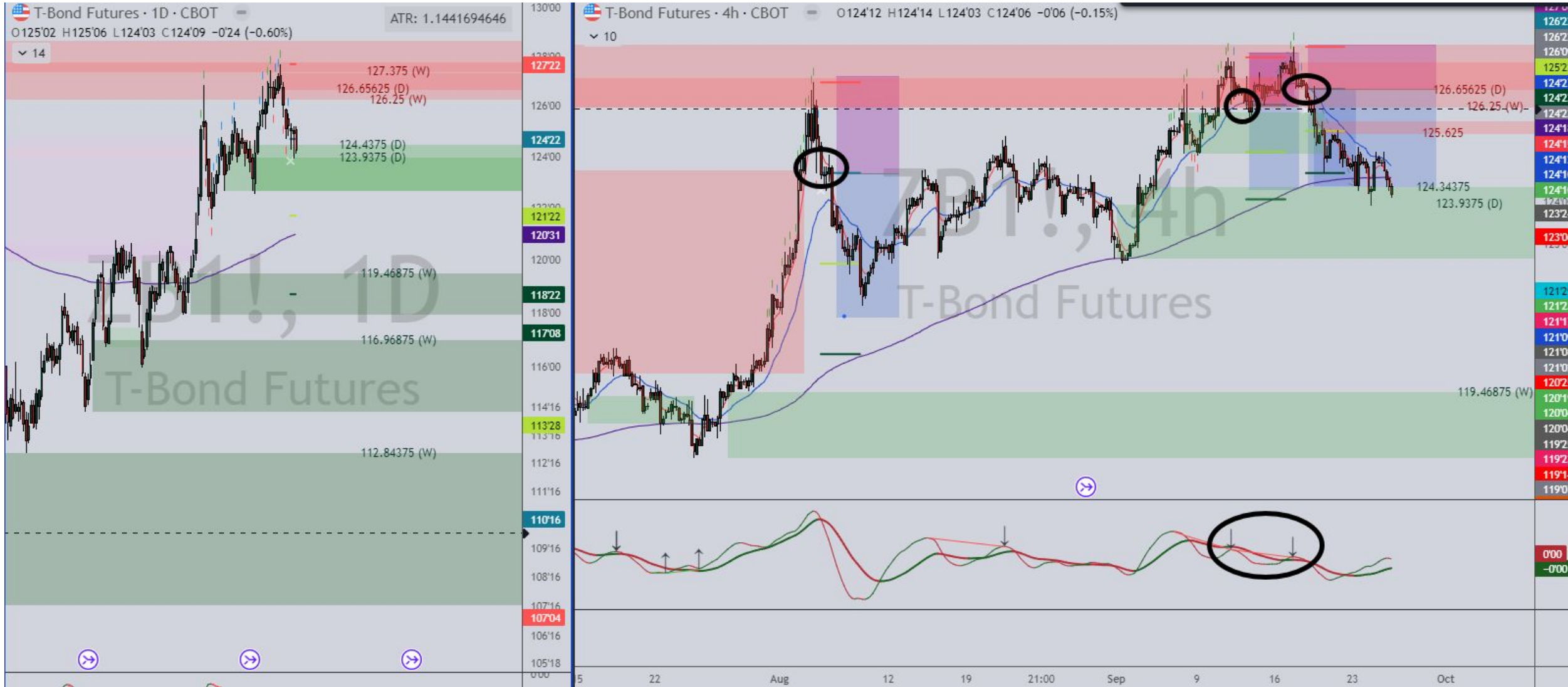
INTRADAY

- 4H / 1H / 15M / 5M / 2M / 1M

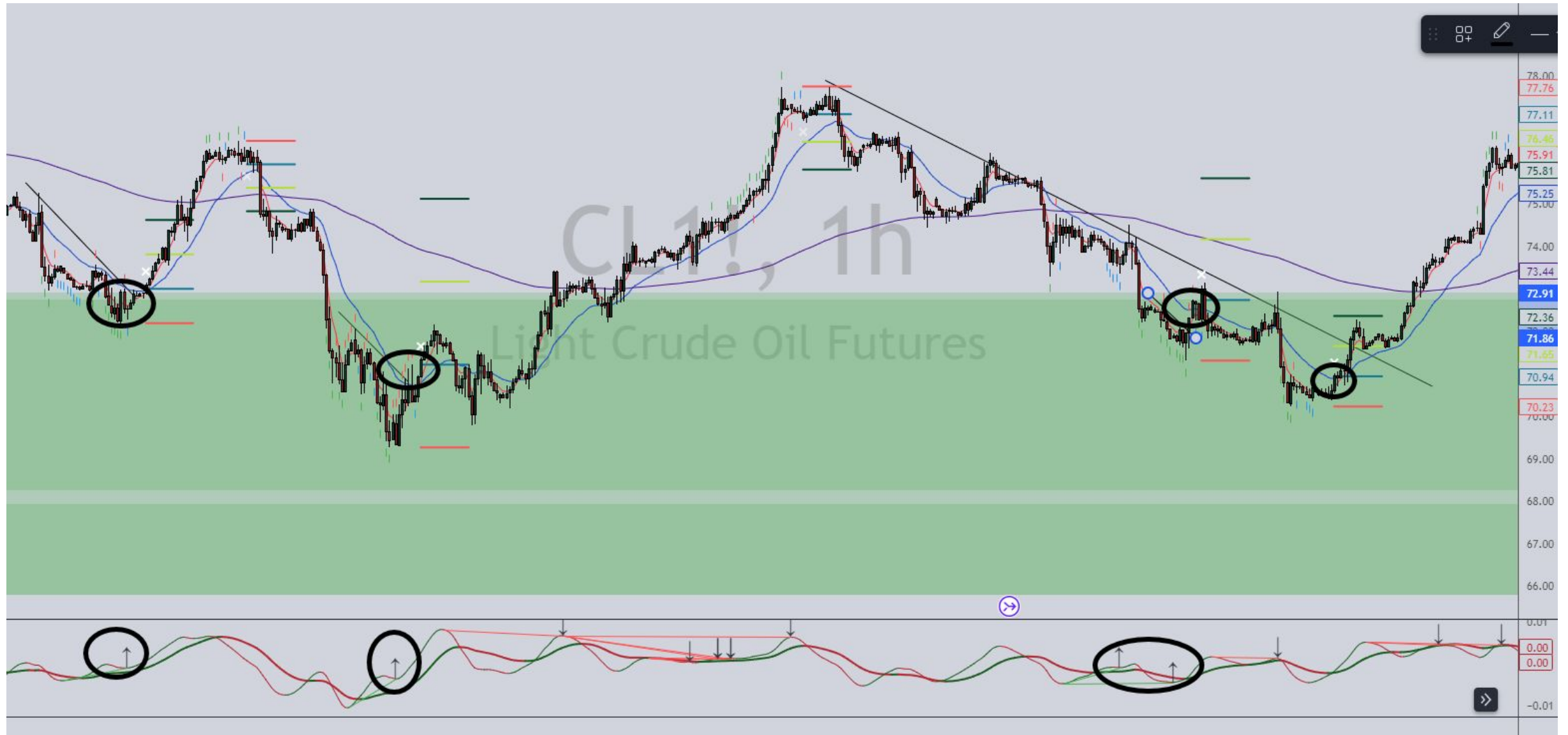
SWING EXECUTION: Daily/4h



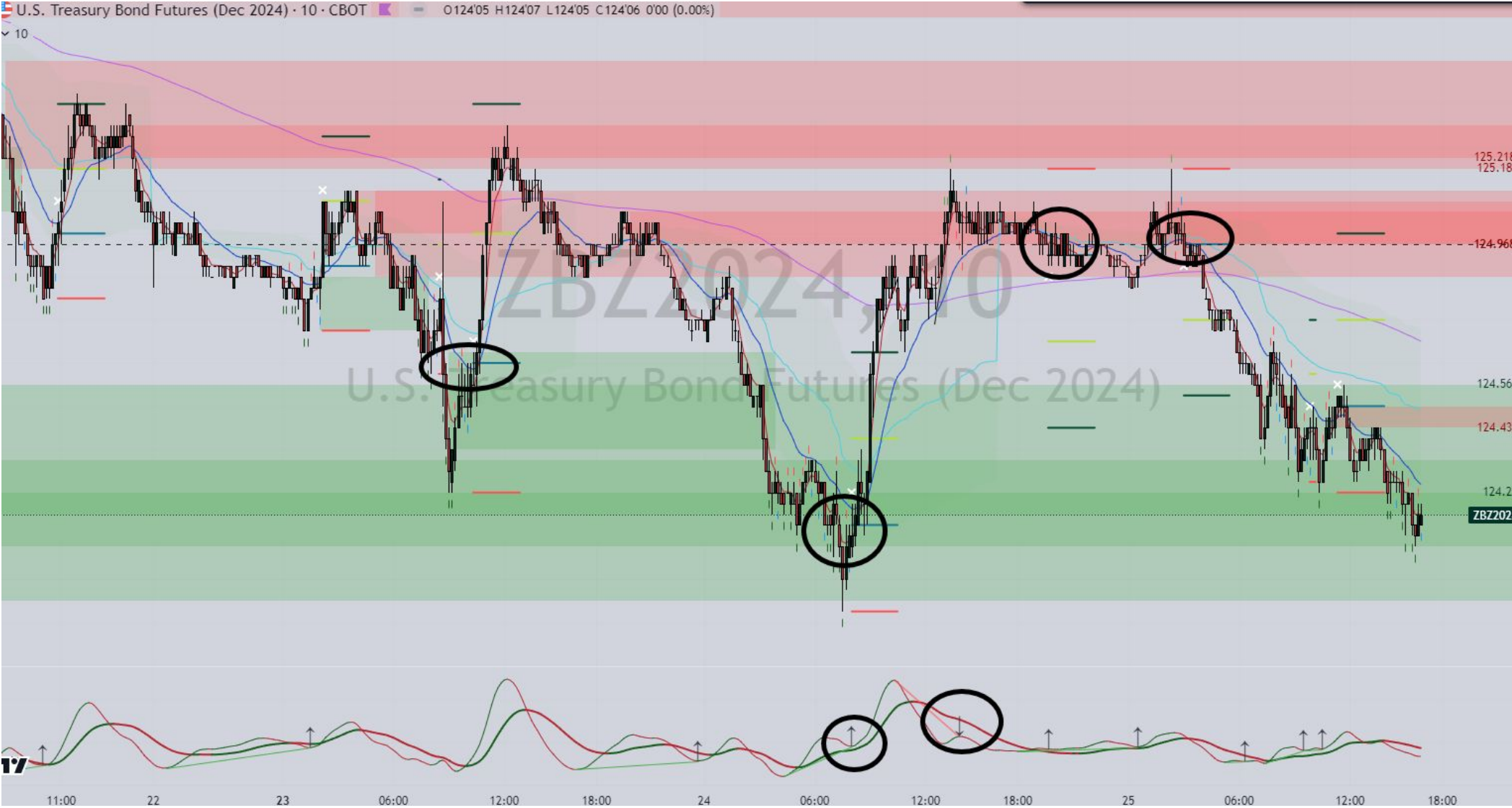
SWING EXECUTION: Daily/4h



SWING EXECUTION: Daily/1H



INTRADAY EXECUTION: 1H/10M



INTRADAY EXECUTION: 1H/10M



INTRADAY EXECUTION: 1H/2M

LIVE MARKET REVIEW

SETUPS

- 3S CODE
- TPI DIVERGENCE
- CANDLESTICK REVERSALS
- FIB RETRACEMENT (IMBALANCE)

LIQUIDITY CONCEPTS

Buy Side Liquidity : Buy stops being taken out

Sell Side Liquidity : Sell stops being taken out

LIQUIDITY

- Used for manipulation
- Used to maintain equilibrium

LIQUIDITY CONCEPTS



LIQUIDITY CONCEPTS

Visible Liquidity : S/R levels, Double Tops & Bottoms

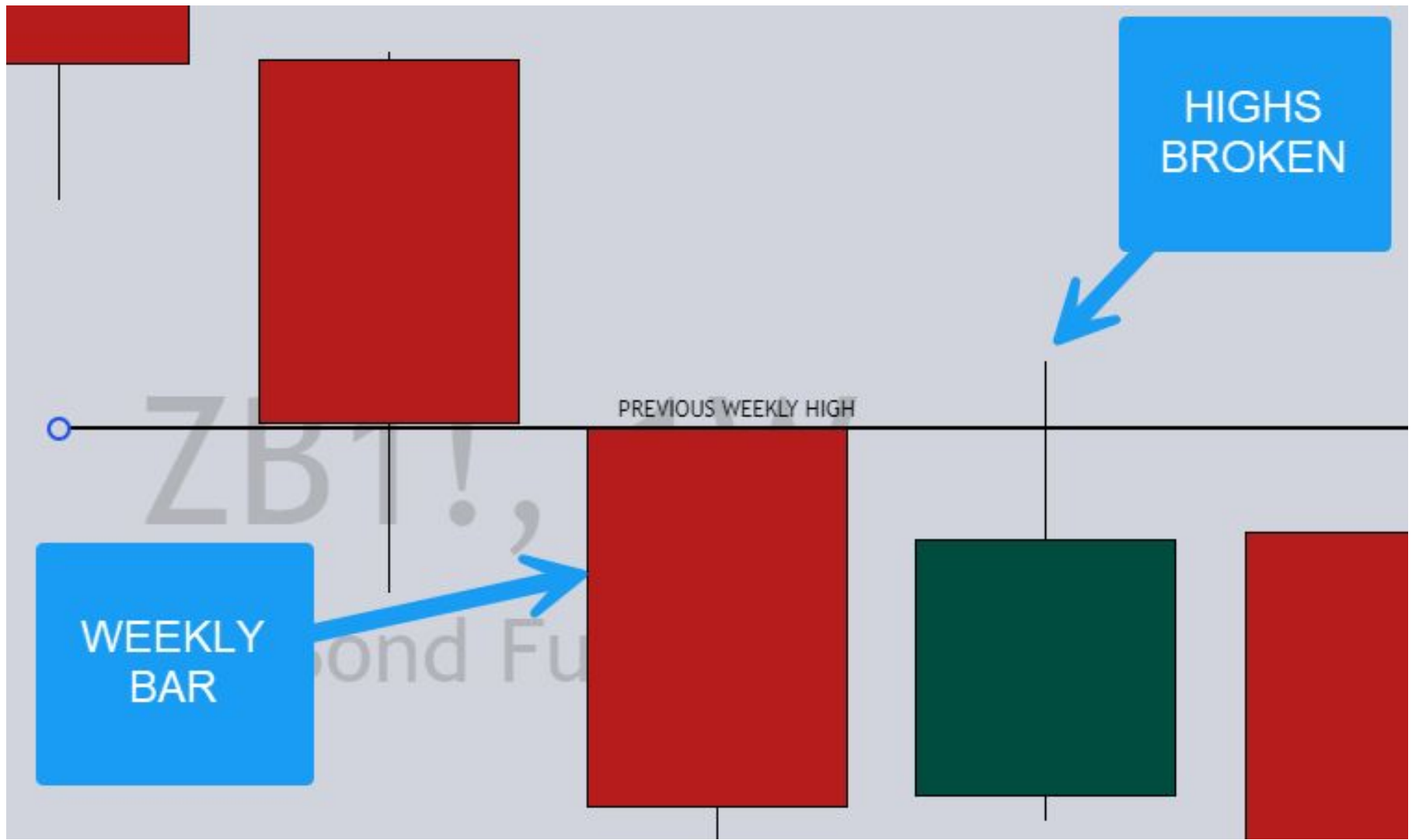
Hidden Liquidity : Trendlines, Swing Highs and Lows



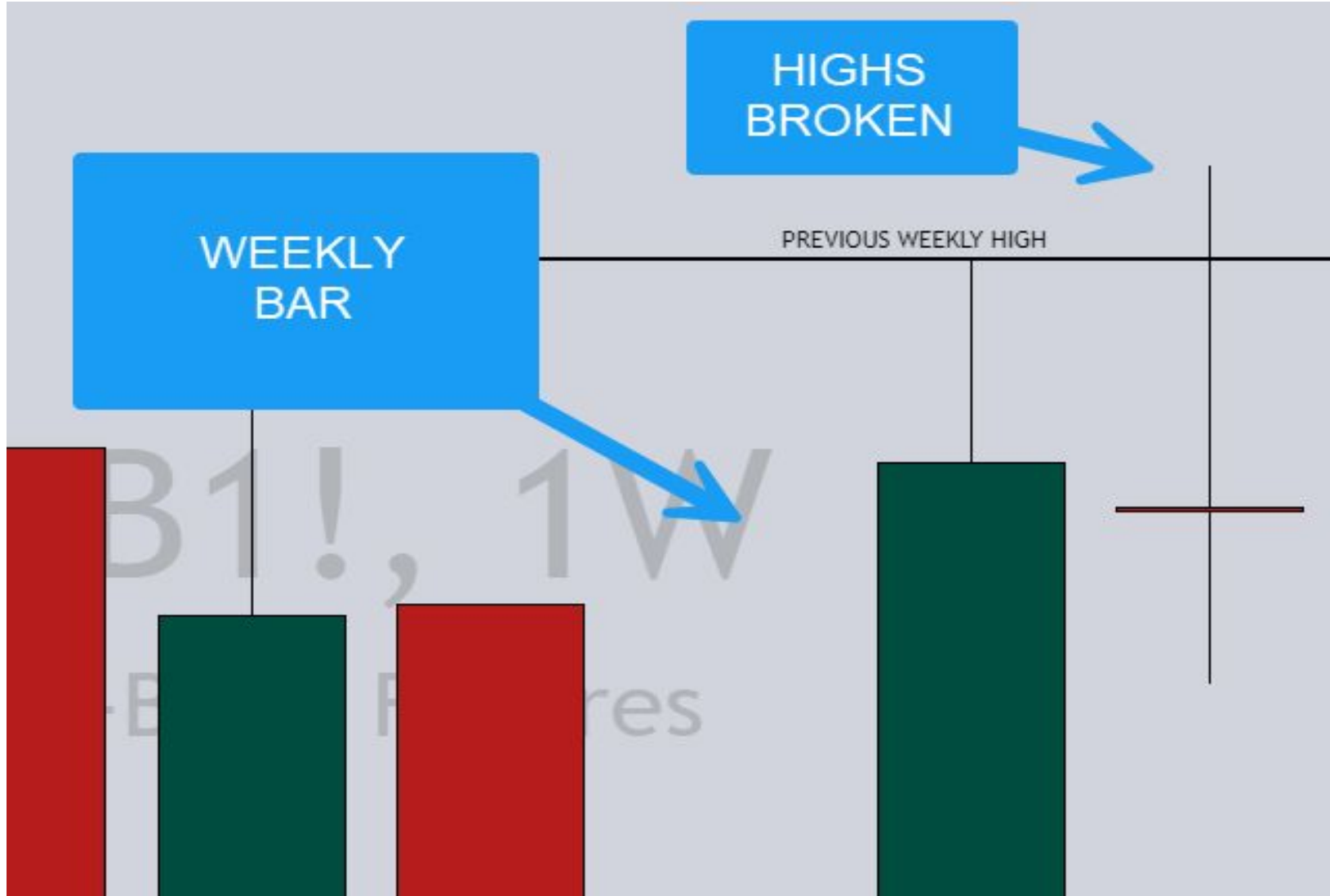
LIQUIDITY

- Look for Swing Highs to be TAKEN OUT (SWEPT)
- Look for Swing Lows to be TAKEN OUT (SWEPT)

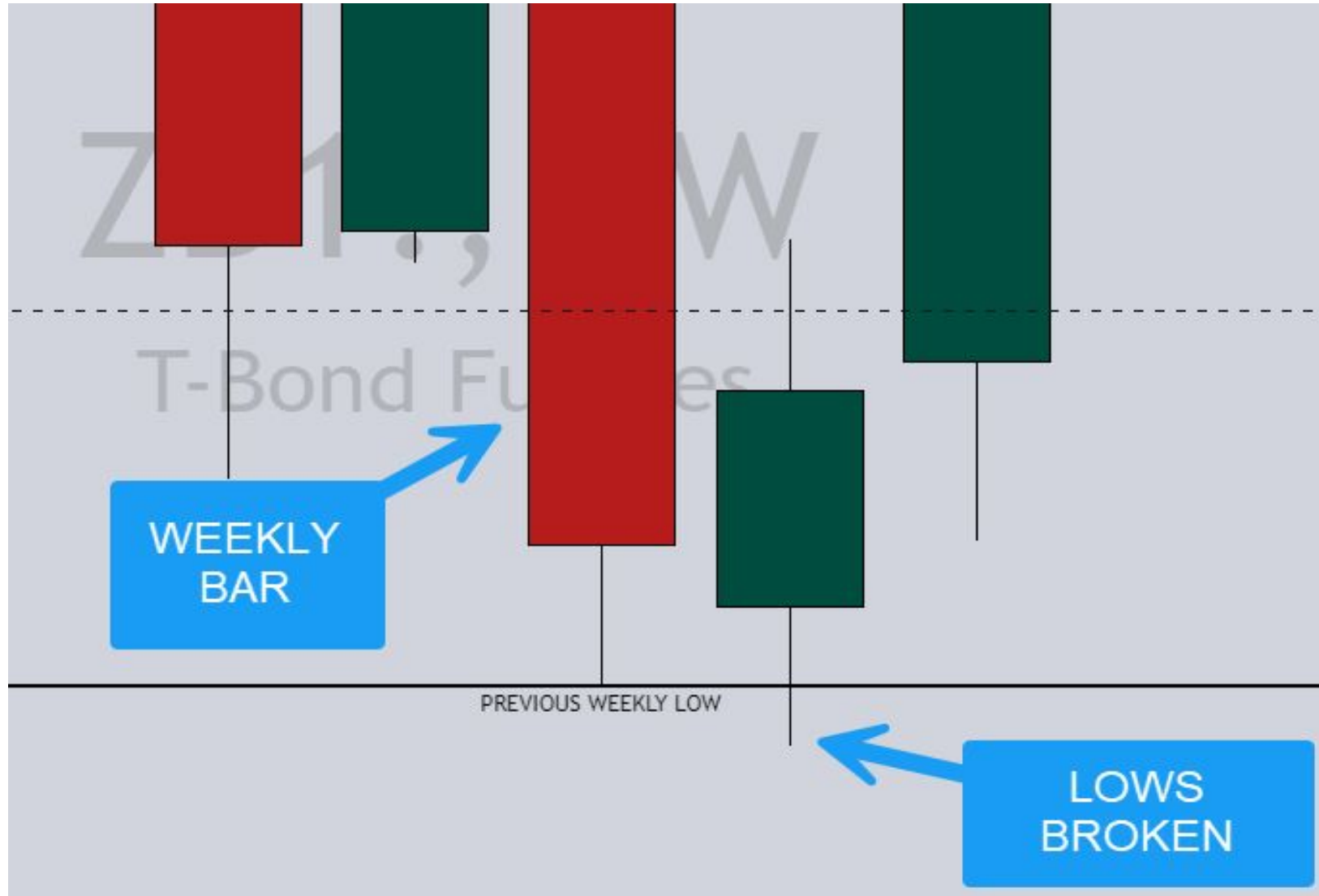
HIGHS SWEPT



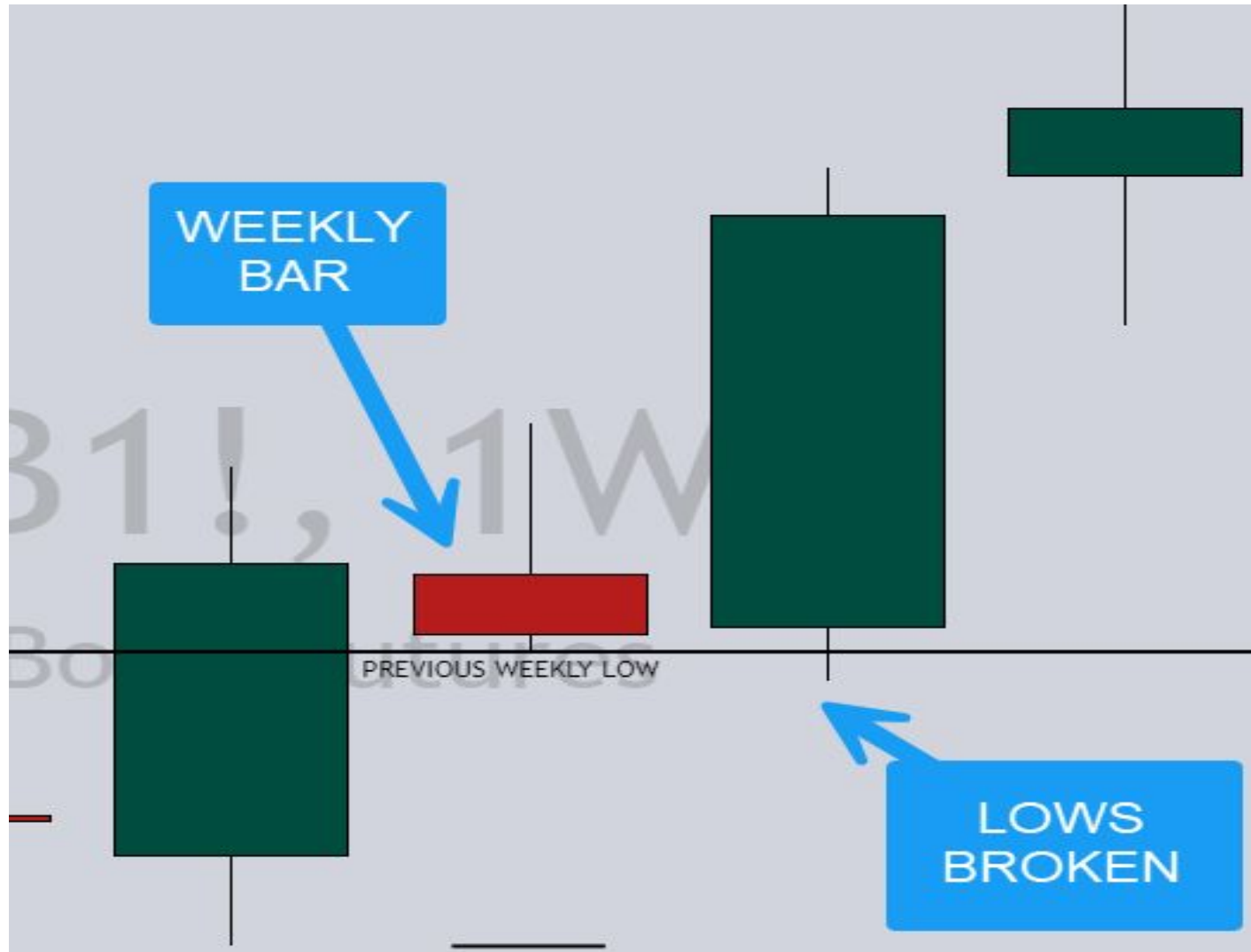
HIGHS SWEPT



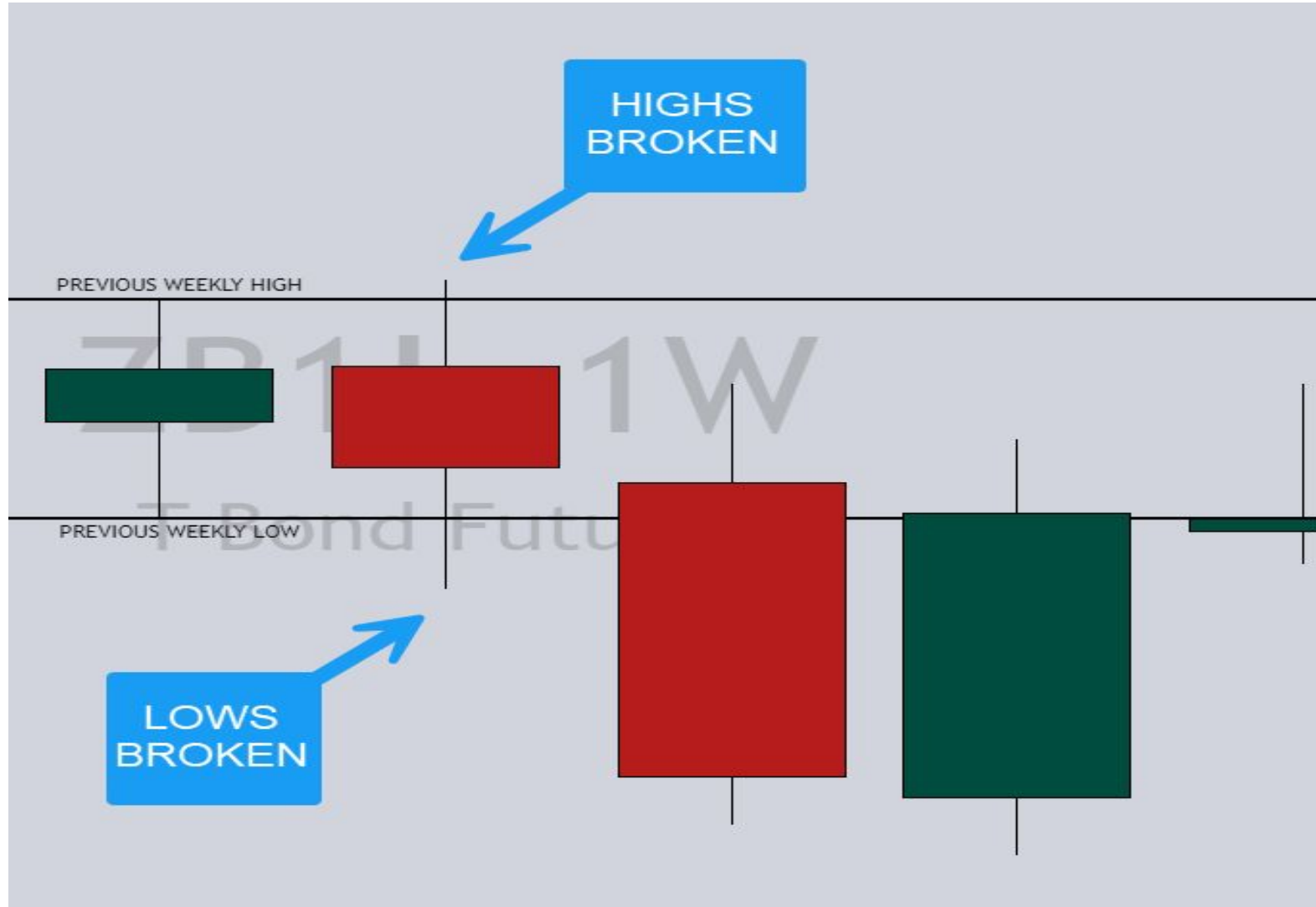
LOWS SWEPT



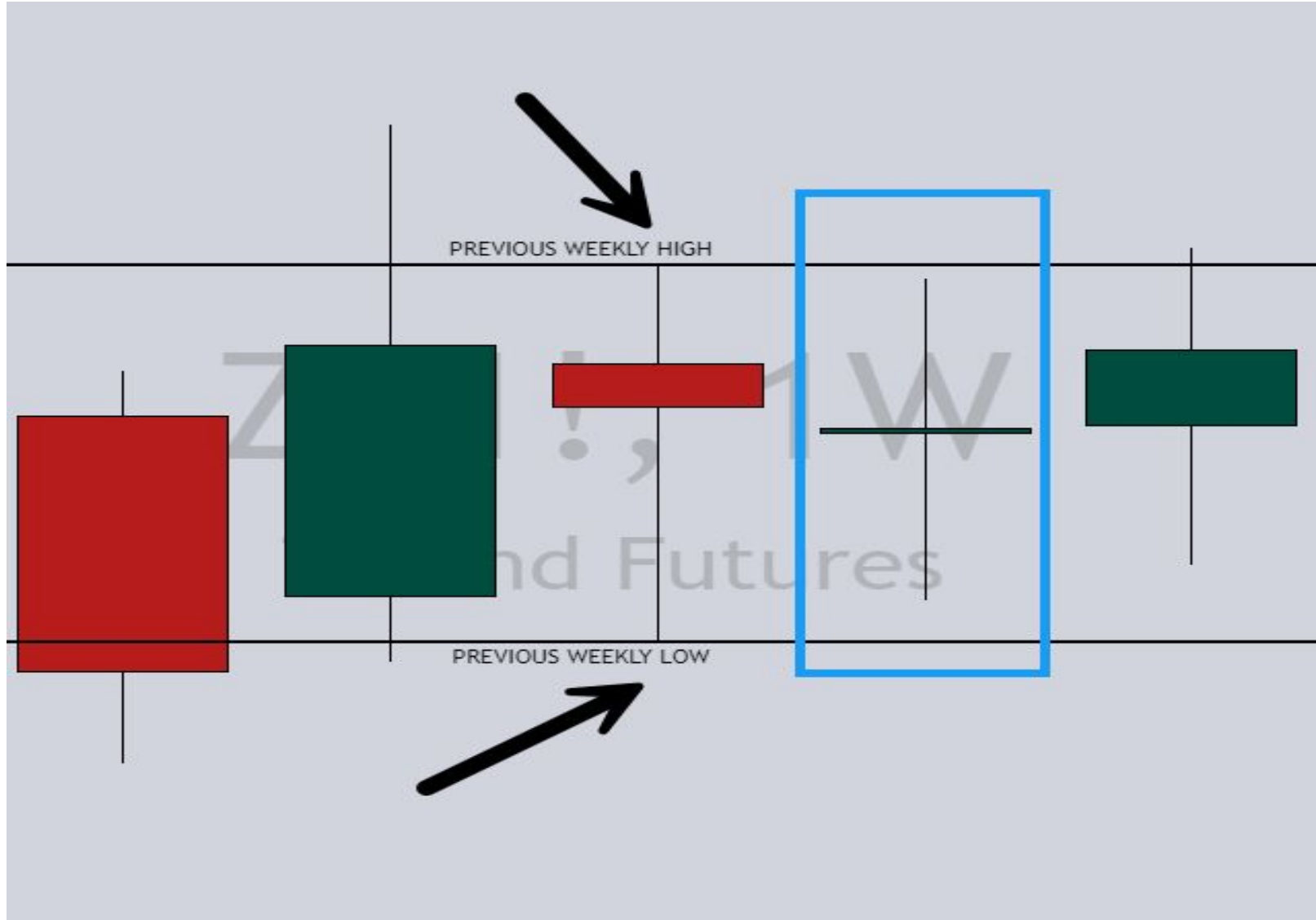
LOWS SWEPT



HIGHS & LOWS SWEPT



INSIDE BAR – NO ‘SWEEP’



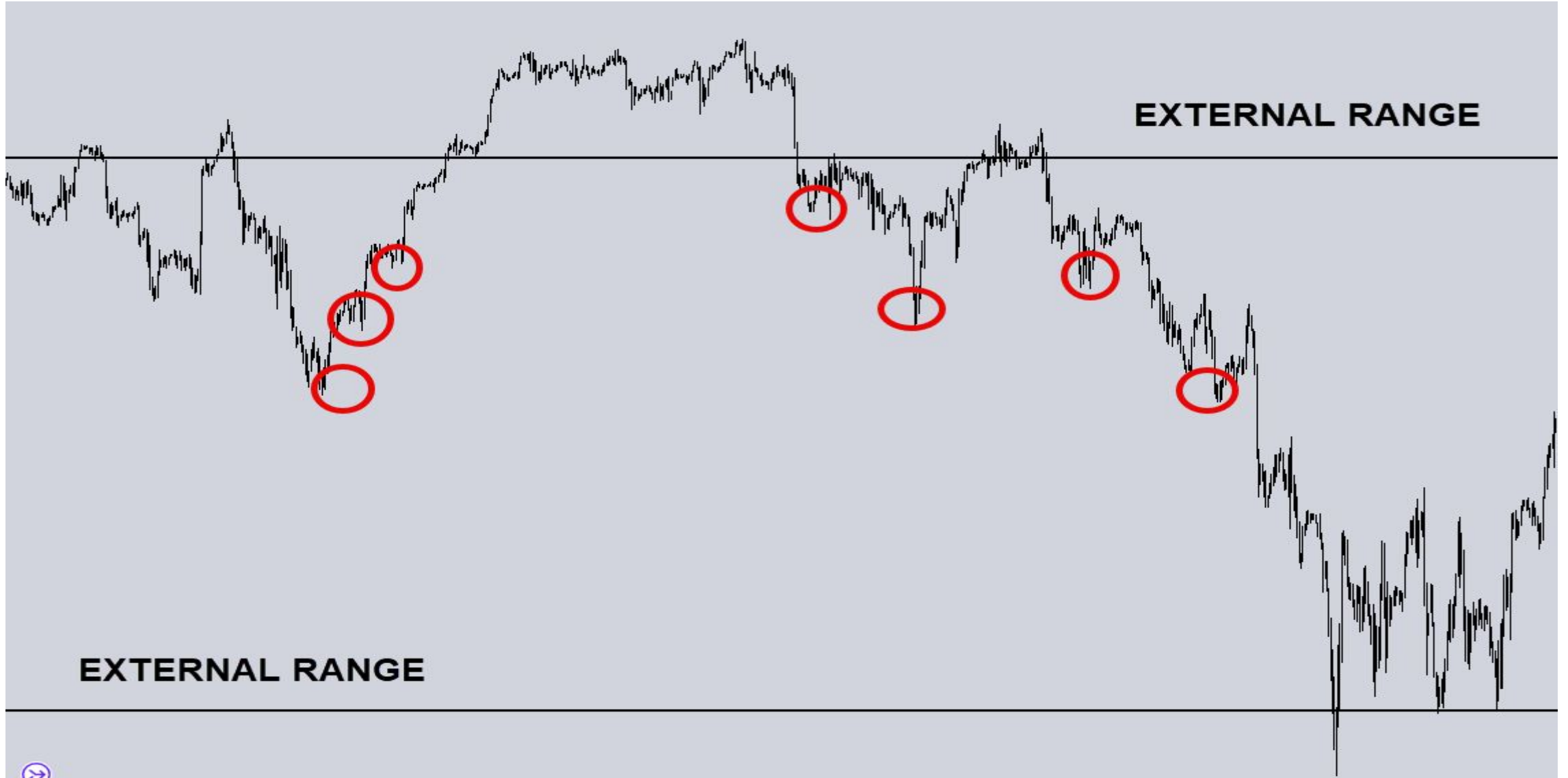
LIQUIDITY

- For every buyer we need a seller
- For every seller we need a buyer

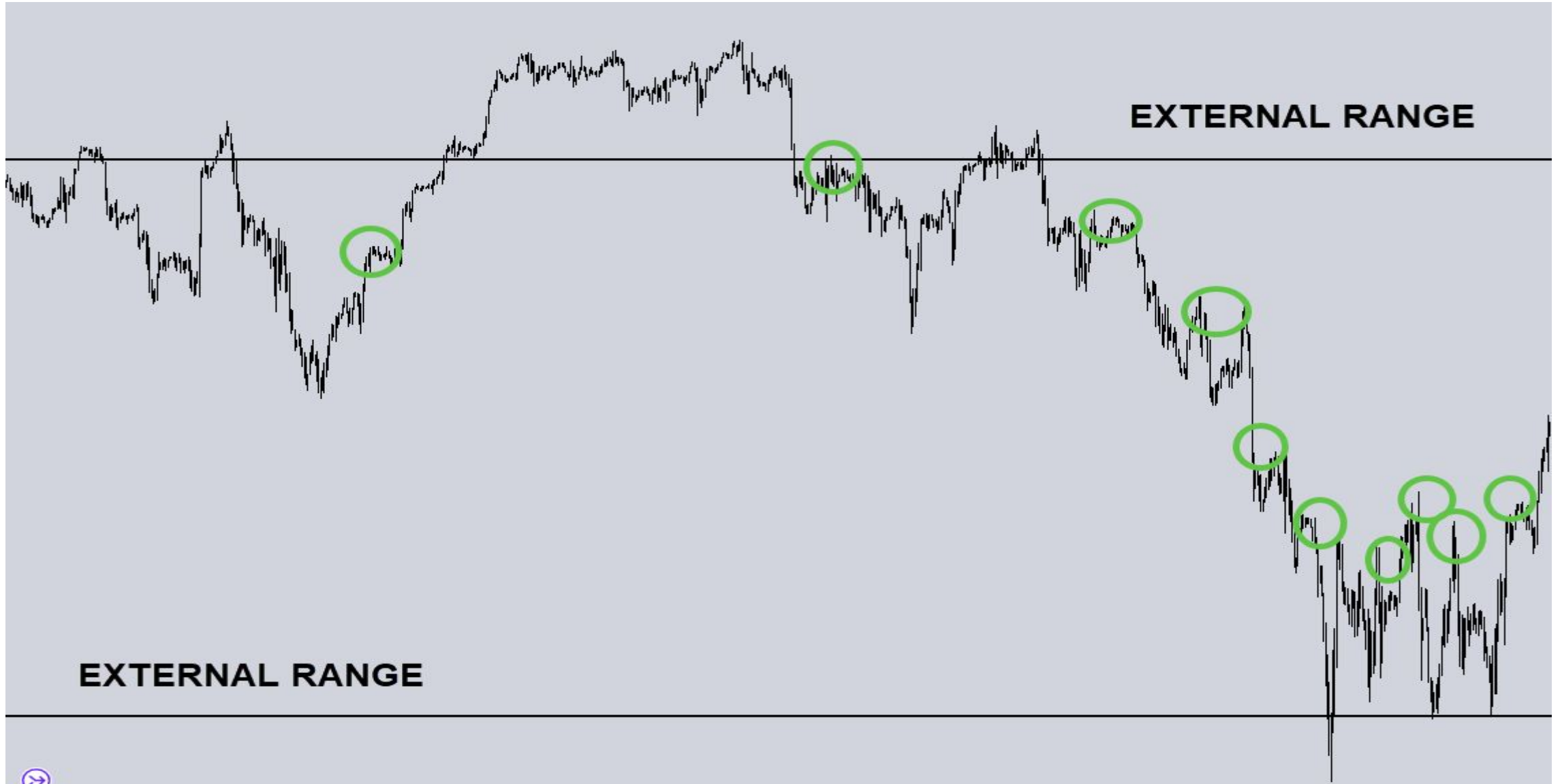
EXTERNAL RANGE LIQUIDITY



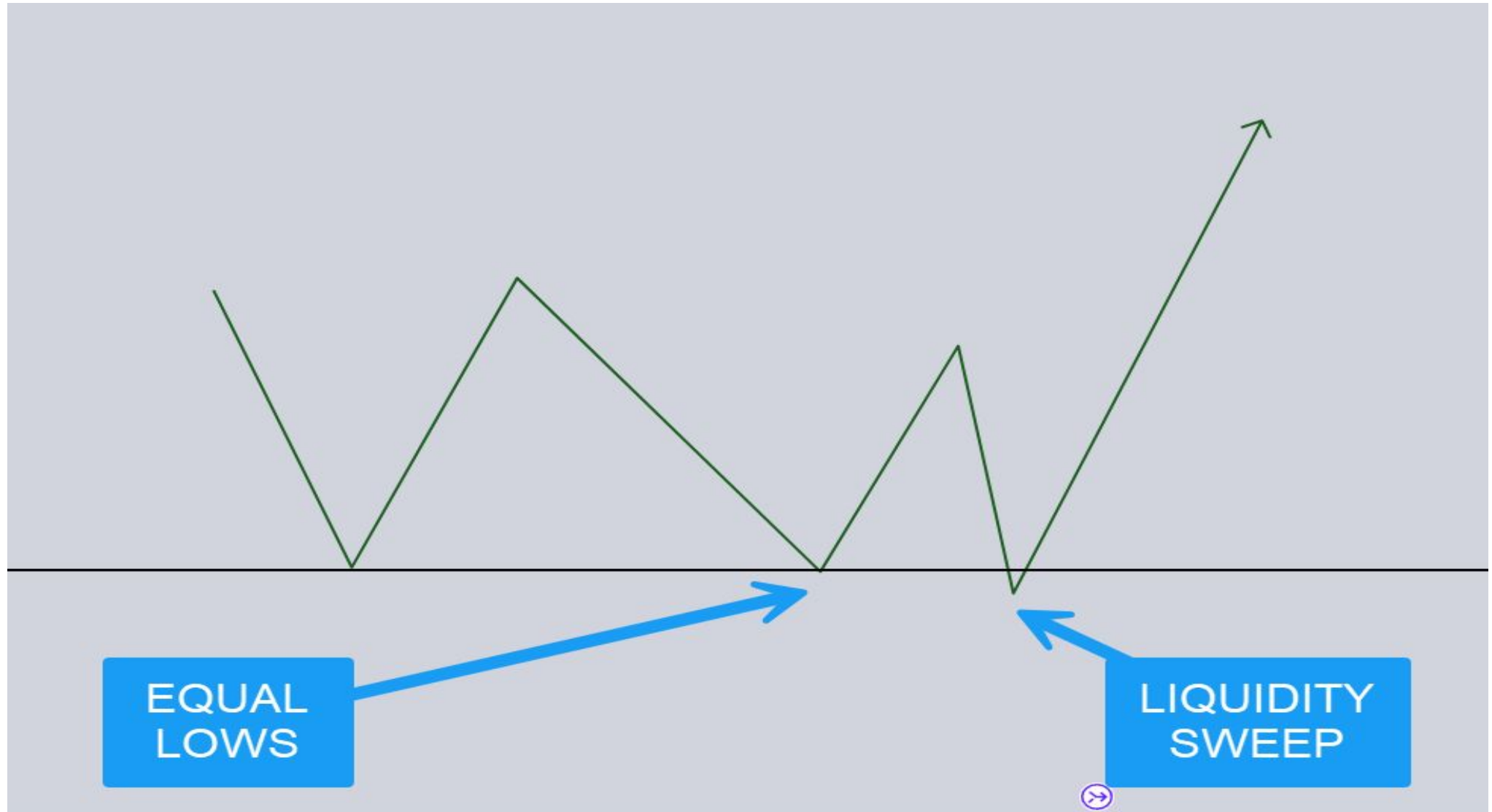
INTERNAL RANGE LIQUIDITY



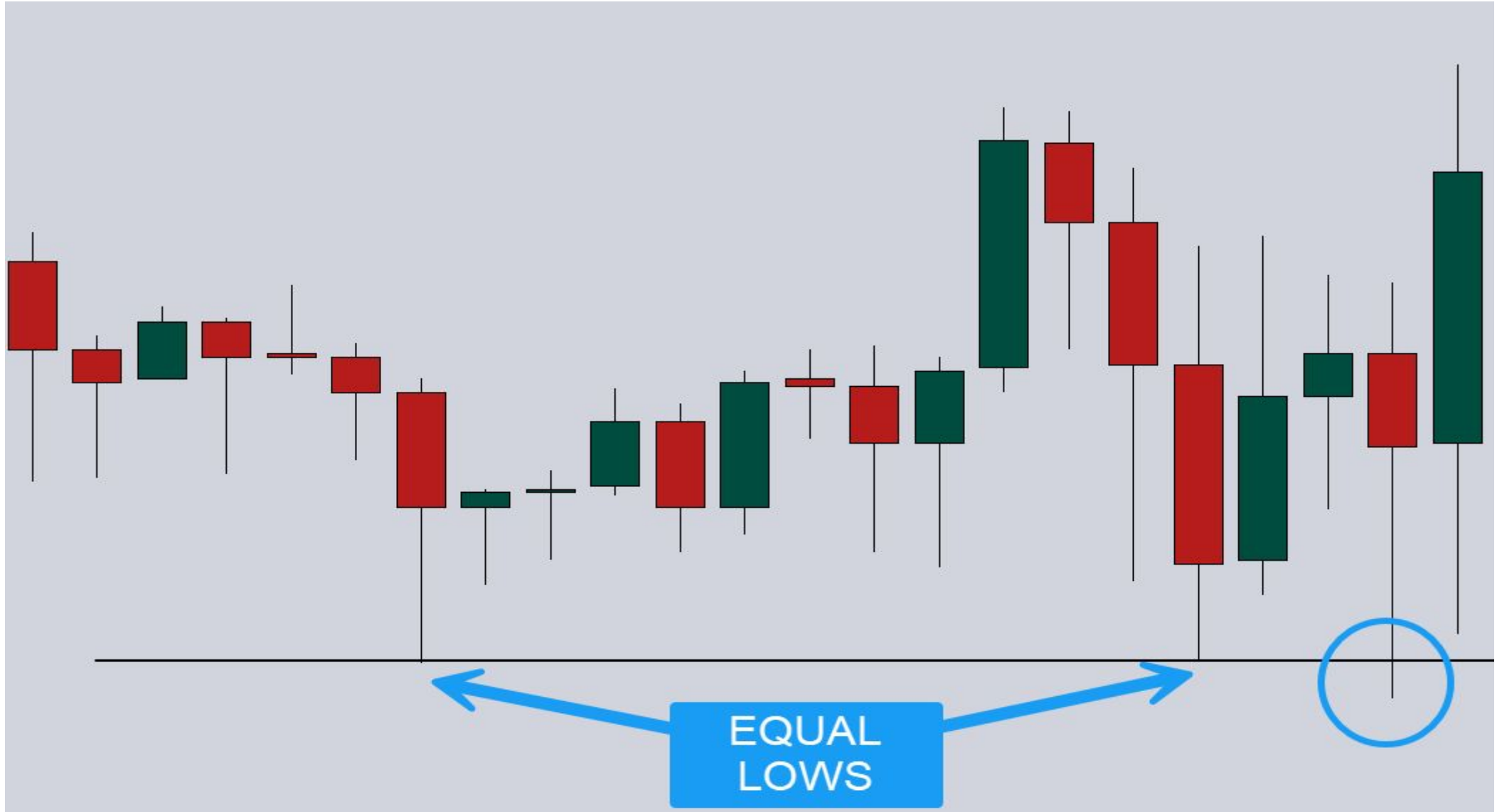
INTERNAL RANGE LIQUIDITY



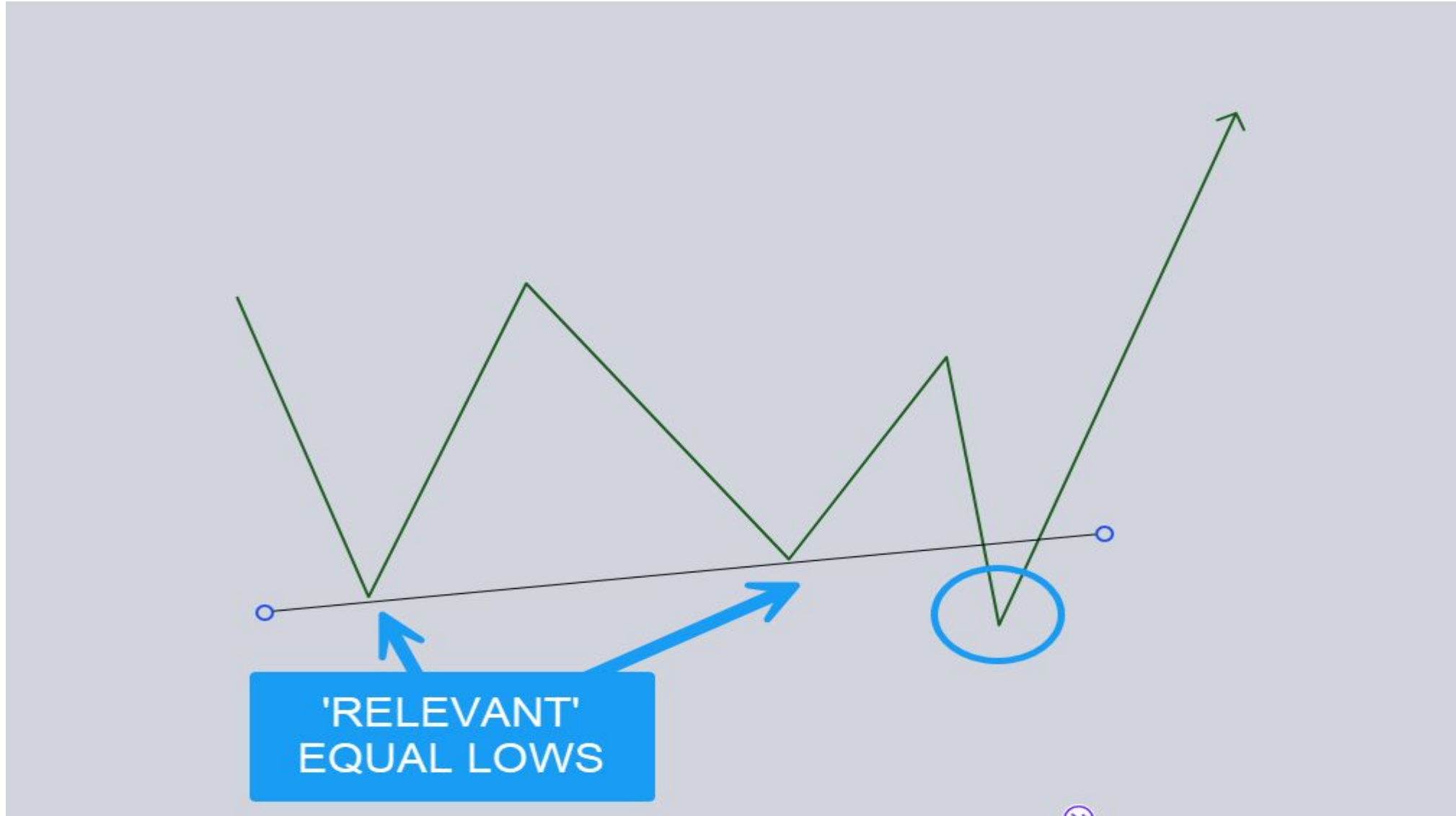
LIQUIDITY – EQUAL LOWS



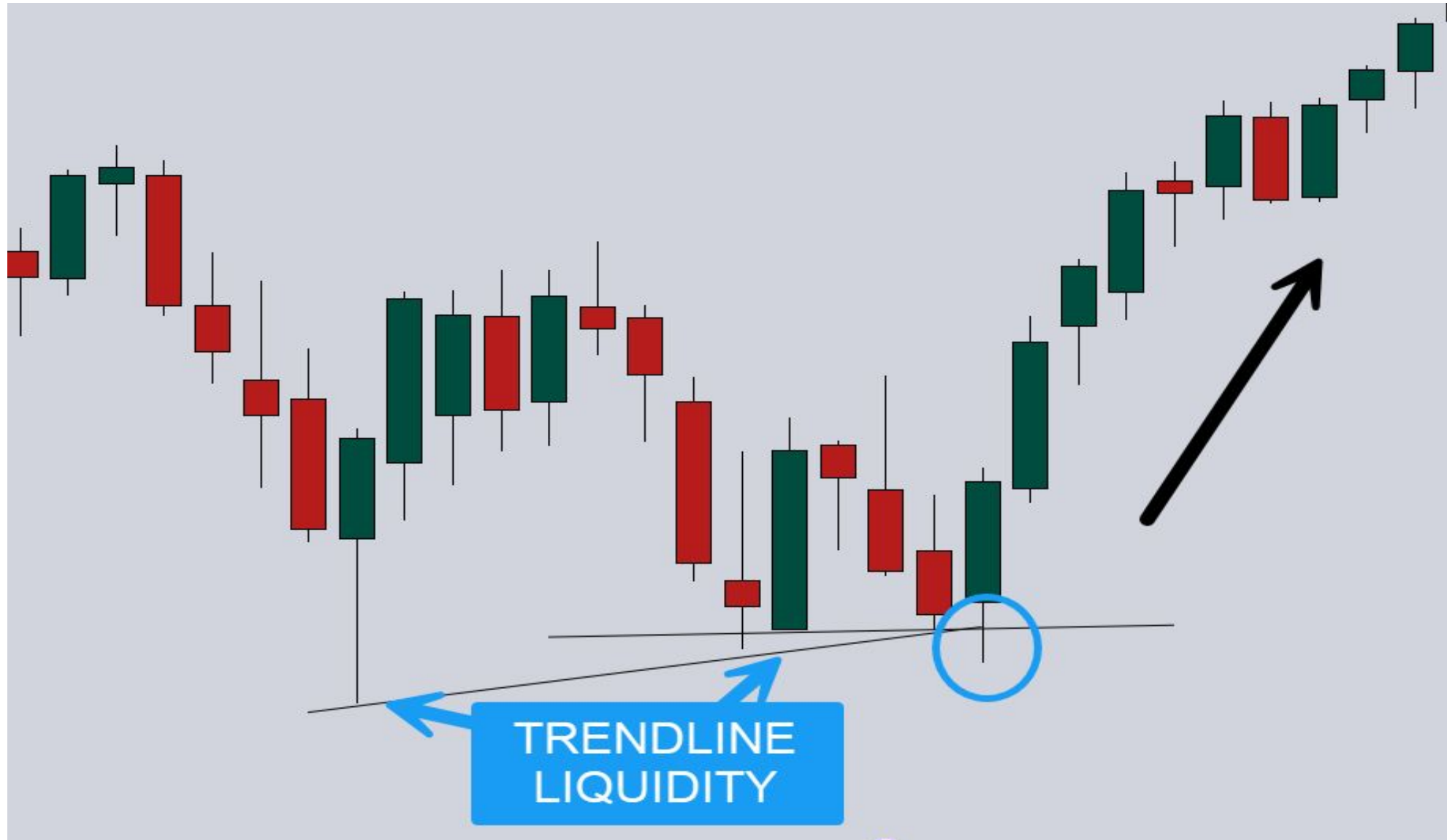
LIQUIDITY – EQUAL LOWS



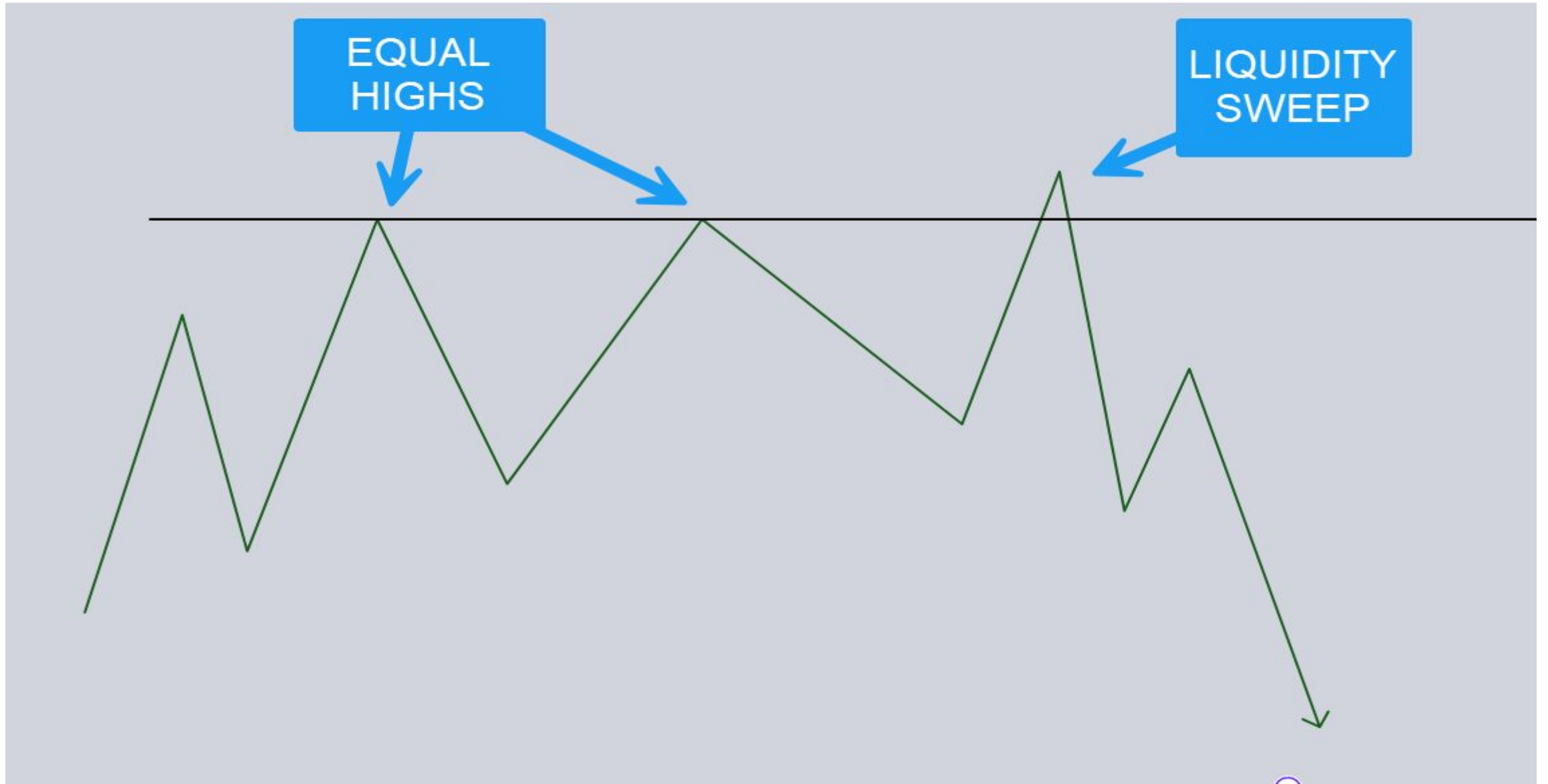
LIQUIDITY – RELEVANT EQUAL LOWS



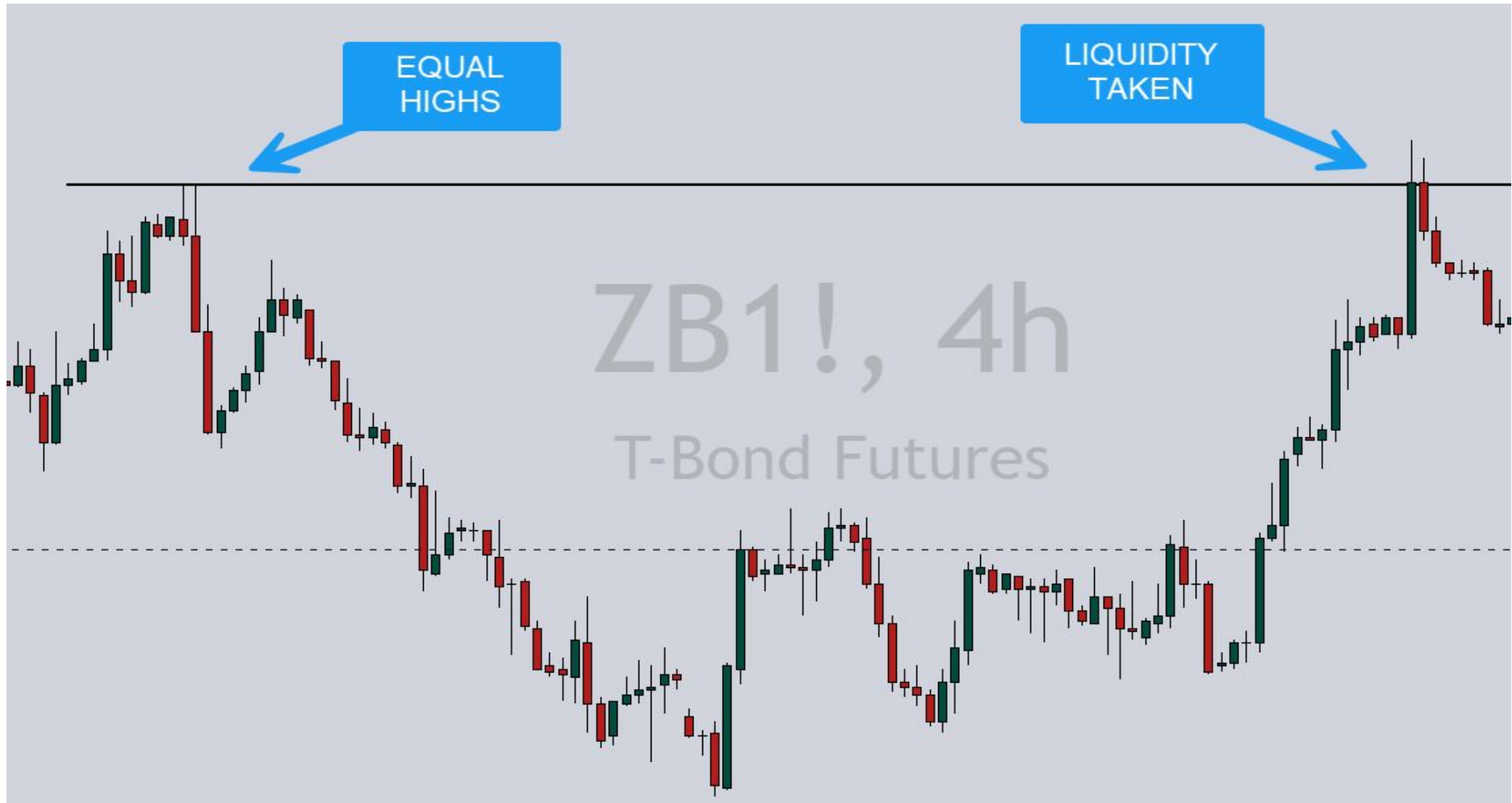
LIQUIDITY – RELEVANT EQUAL LOWS



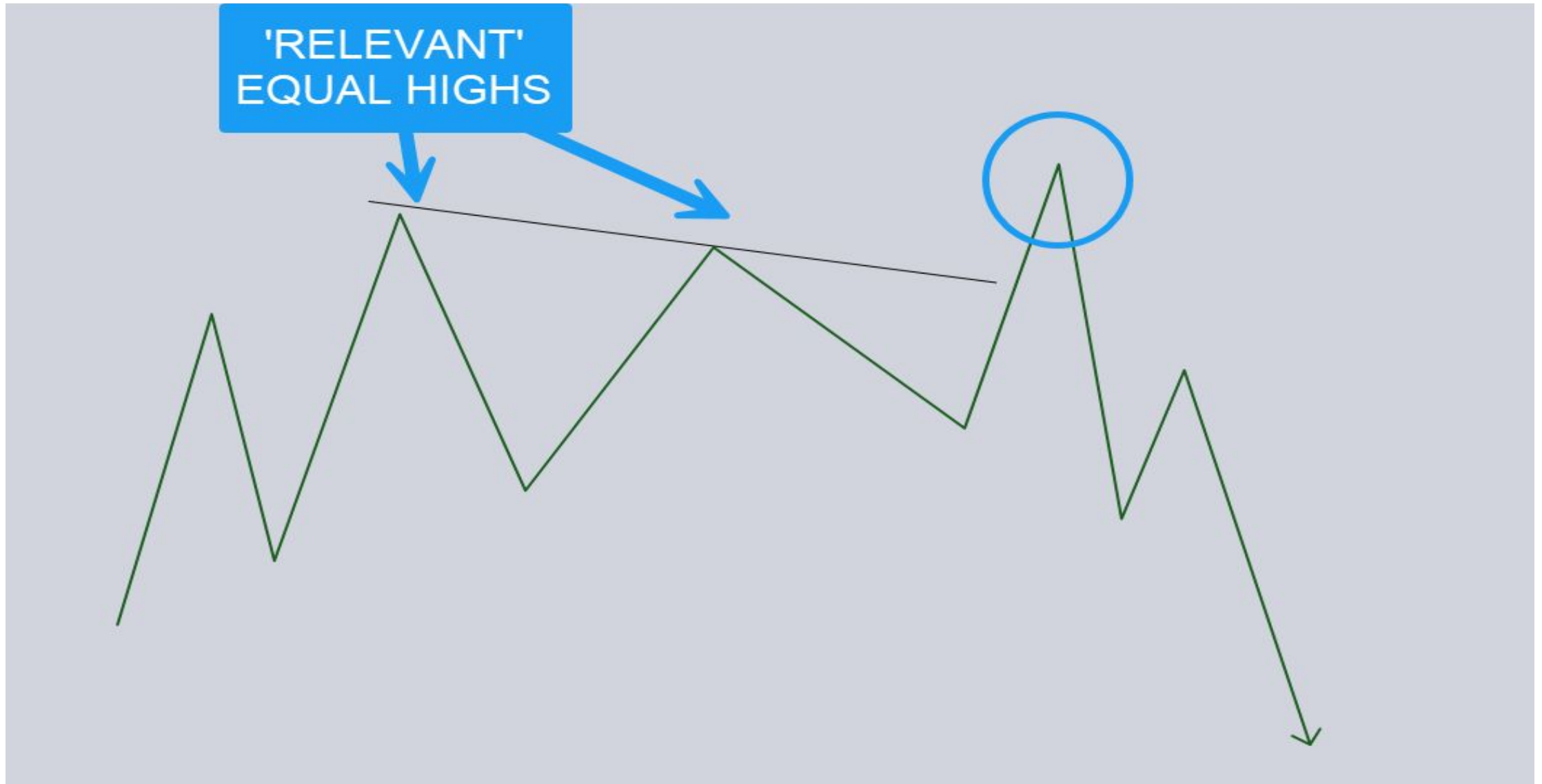
LIQUIDITY – EQUAL HIGHS



EQUAL HIGHS



LIQUIDITY – RELEVANT EQUAL HIGHS



LIQUIDITY – RELEVANT EQUAL HIGHS



NEWS

- Institutions, banks, etc LOVE NEWS!
- Used for manipulation

EQUAL HIGHS



EQUAL LOWS



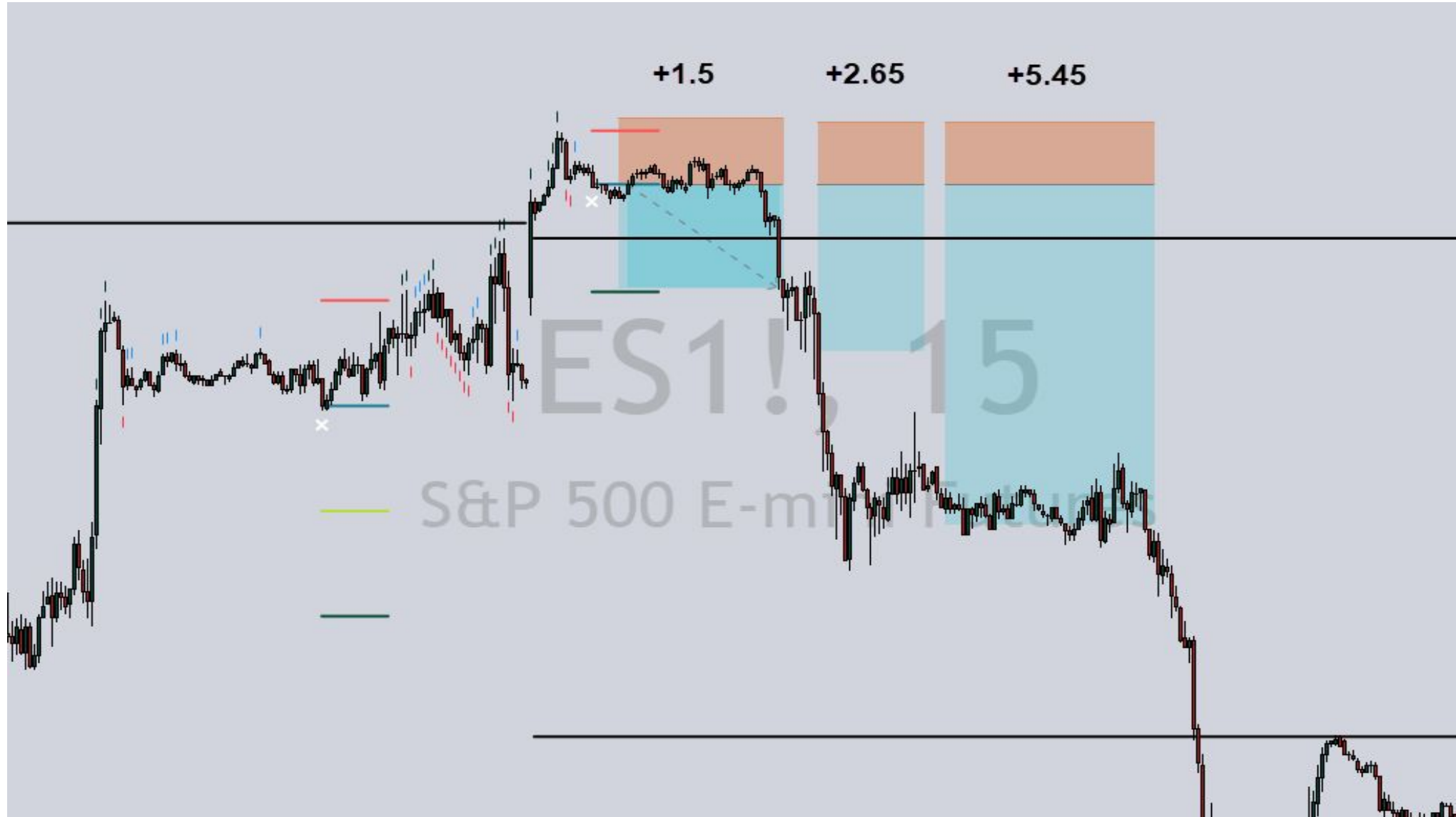
NEWS!



WEEKLY HIGH SWEEP

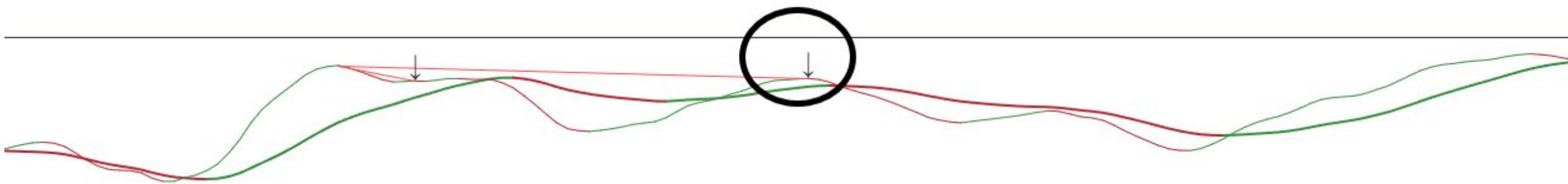


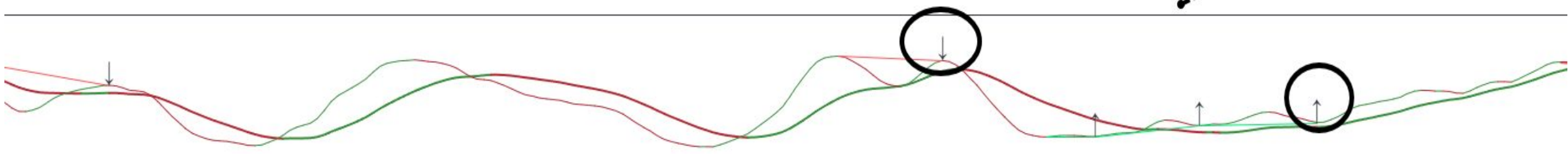
WEEKLY HIGH SWEEP



KEY 'LEVELS'

- Previous Month Low/High
- Previous Week Low/High
- Previous Day Low/High





GRADING THE TRADE

- TITAN LEVELS
- 3S CODE Signals
- TPI DIVERGENCE SIGNALS
- FIBONACCI CONFLUENCE
- CANDLE CONFLUENCE
- IMBALANCE
- LIQUIDITY SWEEPS
- SEASONALITY / COT
- MOVING AVERAGES
- LARGER TREND