

# INSIDER MASTERMIND

May 2024 – ORLANDO, FL

Silas Peters

**TRADES**  
TRENDING

# RISK DISCLAIMER

IMPORTANT NOTICE: No representation is being made that the use of this strategy or any system or trading methodology will generate profits. Past performance is not necessarily indicative of future results. There is substantial risk of loss associated with trading securities and options on equities. Only risk capital should be used to trade. Trading stocks, options, futures, forex, and securities are not suitable for everyone. Disclaimer: Futures, Options, Securities and Currency trading all have large potential rewards, but they also have large potential risk. You must be aware of the risks and be willing to accept them in order to invest in these markets. Don't trade with money you can't afford to lose. This website is neither a solicitation nor an offer to Buy/Sell futures, options, stocks, or currencies. No representation is being made that any account will or is likely to achieve profits or losses similar to those discussed on this web site. The past performance of any trading system or methodology is not necessarily indicative of future results.

CFTC RULE 4.41 – HYPOTHETICAL OR SIMULATED PERFORMANCE RESULTS HAVE CERTAIN LIMITATIONS. UNLIKE AN ACTUAL PERFORMANCE RECORD, SIMULATED RESULTS DO NOT REPRESENT ACTUAL TRADING. ALSO, SINCE THE TRADES HAVE NOT BEEN EXECUTED, THE RESULTS MAY HAVE UNDER-OR-OVER COMPENSATED FOR THE IMPACT, IF ANY, OF CERTAIN MARKET FACTORS, SUCH AS LACK OF LIQUIDITY. SIMULATED TRADING PROGRAMS IN GENERAL ARE ALSO SUBJECT TO THE FACT THAT THEY ARE DESIGNED WITH THE BENEFIT OF HINDSIGHT. NO REPRESENTATION IS BEING MADE THAT ANY ACCOUNT WILL OR IS LIKELY TO ACHIEVE PROFIT OR LOSSES SIMILAR TO THOSE SHOWN.

# WEEKLY SWEEP (WS)

- Chart Setup / Layout



# CHART SETUP / LAYOUT

- Weekly/Daily
- 4H
- 1H

# INDICATORS / TOOLS

- Titan Levels
- 3S Code
- TPI Divergence

# CONFLUENCE 'ADD-ONS'

- Moving Averages
- Fibonacci

# CANDLESTICKS

- Pin Bars
- Engulfing Bars
- Inside Bars

# RULES

- Higher Timeframe Titan Levels (\*Preferred)
- 3S CODE Signals
- TPI Divergence Signals
- Candlestick Confirmations



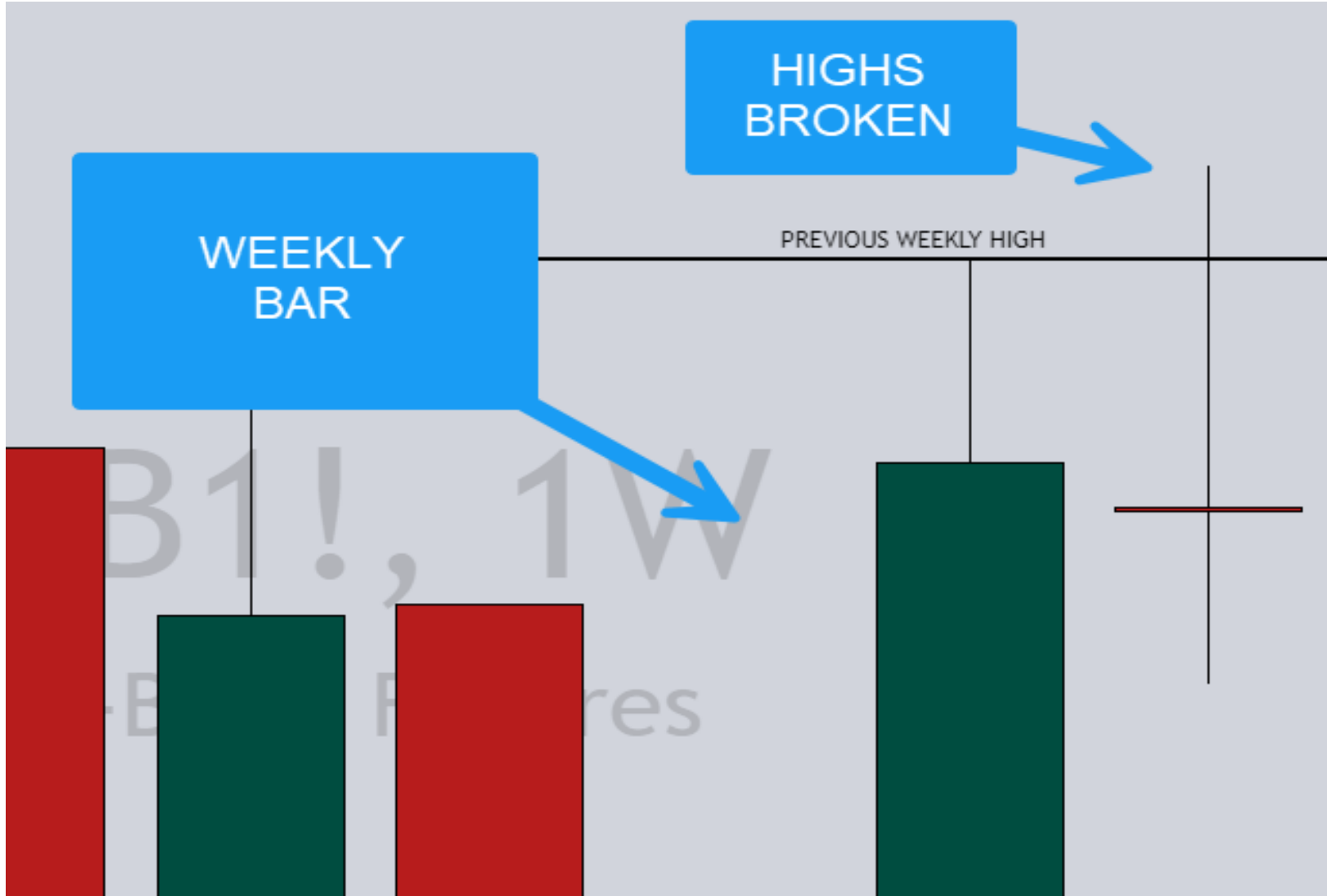
# RULES

- Look for Prior Week Highs to be TAKEN OUT (SWEPT)
- Look for Prior Week Lows to be TAKEN OUT (SWEPT)

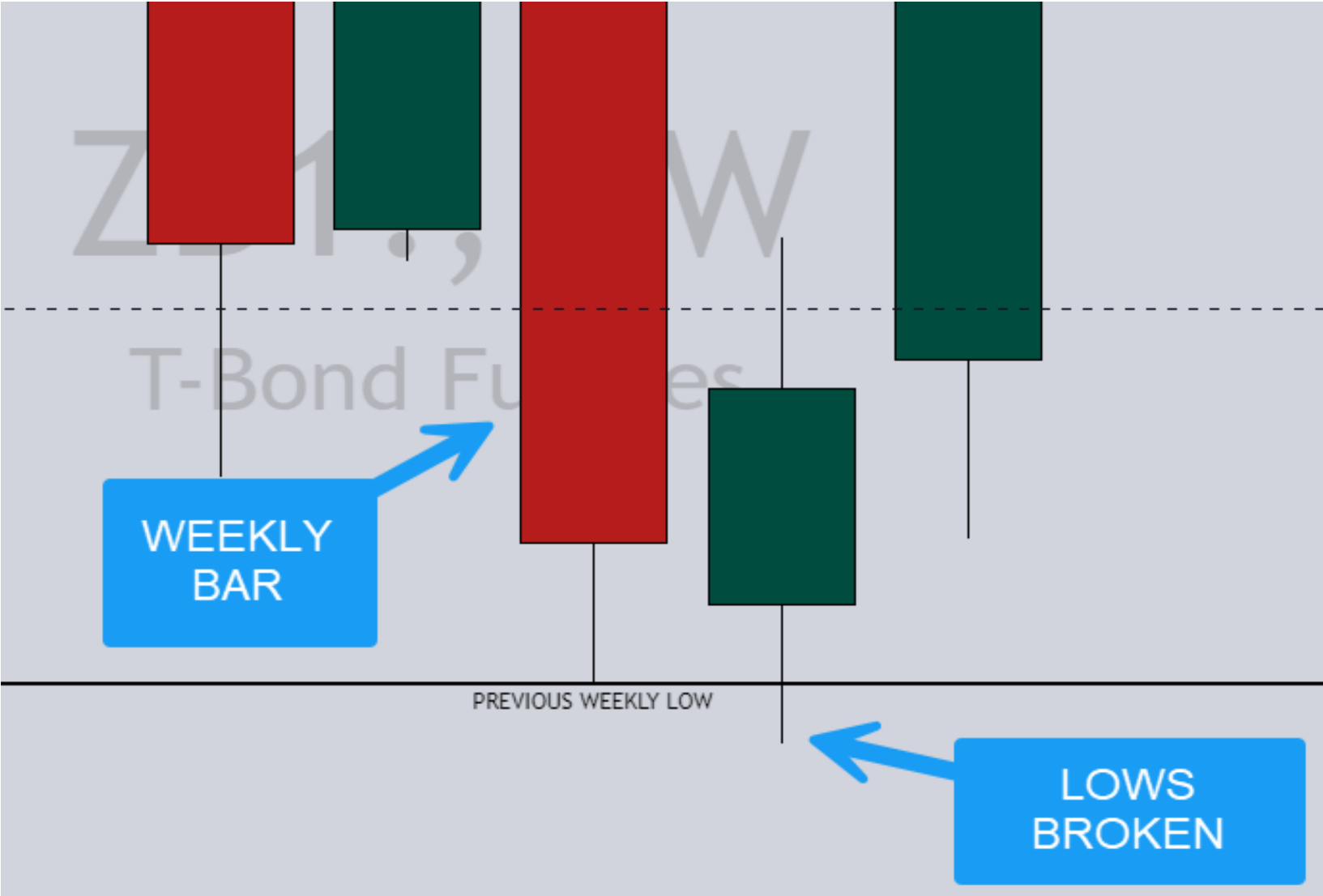
# HIGHS SWEPT



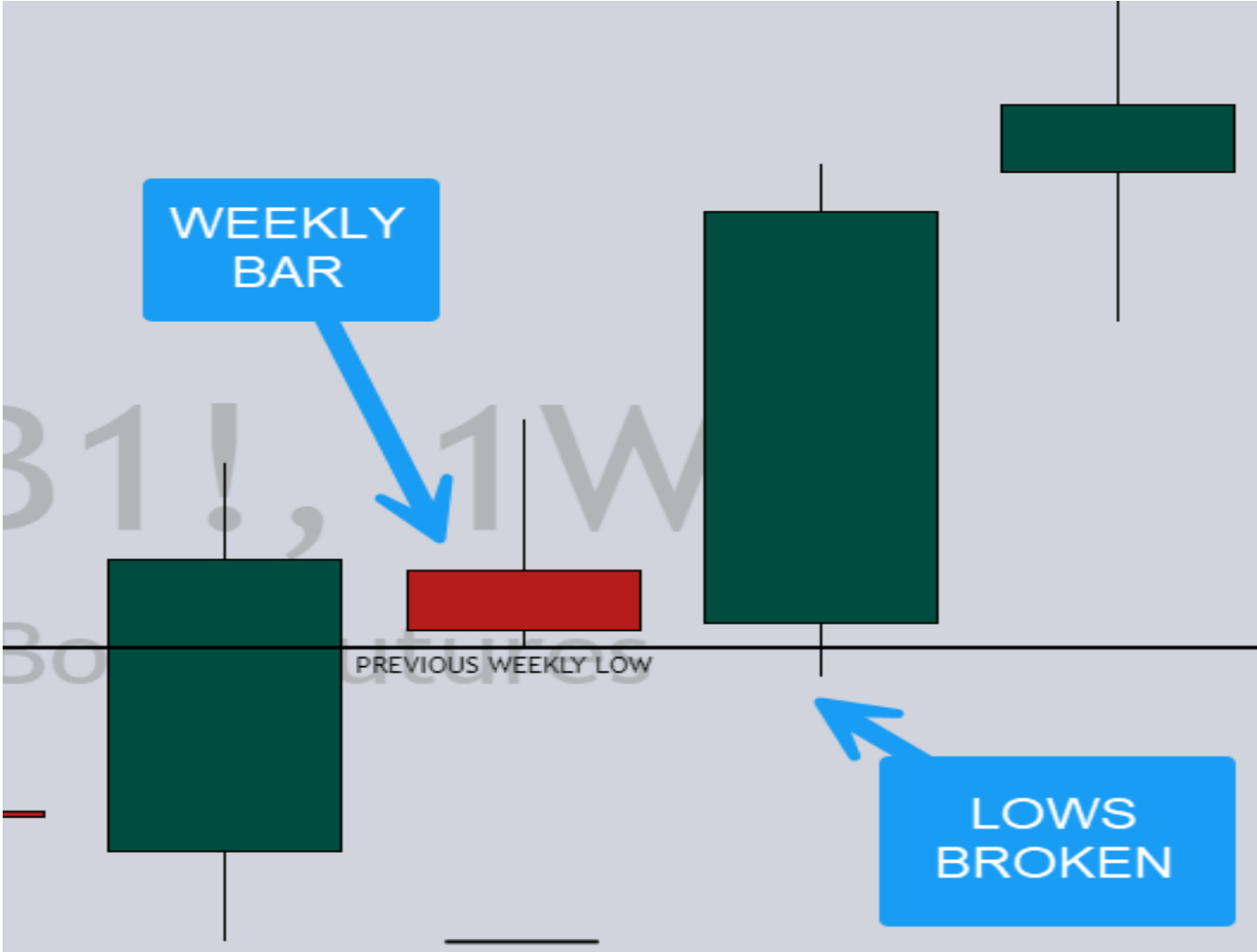
# HIGHS SWEPT



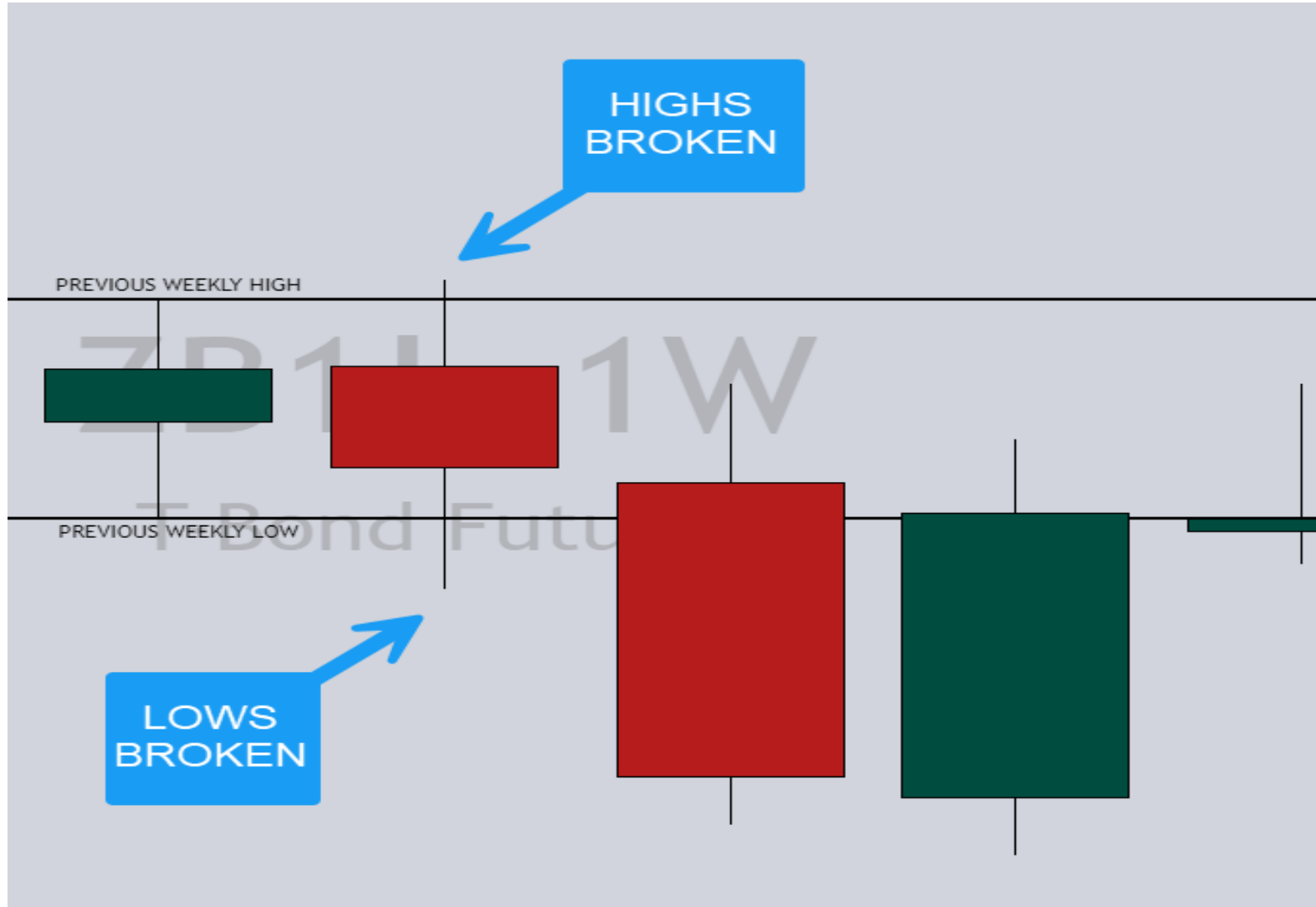
# LOWS SWEPT



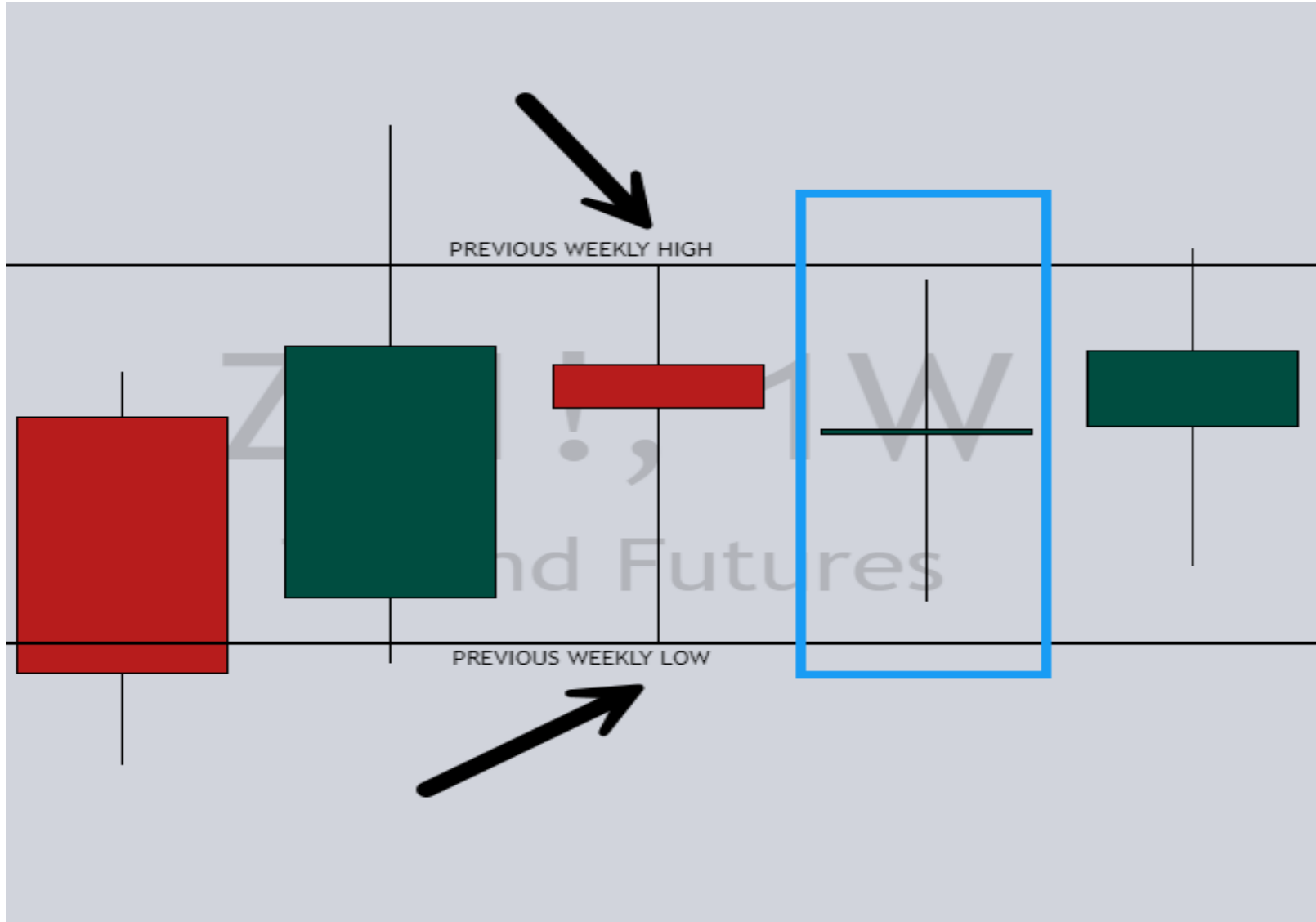
# LOWS SWEPT



# HIGHS & LOWS SWEPT



# INSIDE BAR – NO ‘SWEEP’



# LIQUIDITY

- For every buyer we need a seller
- For every seller we need a buyer

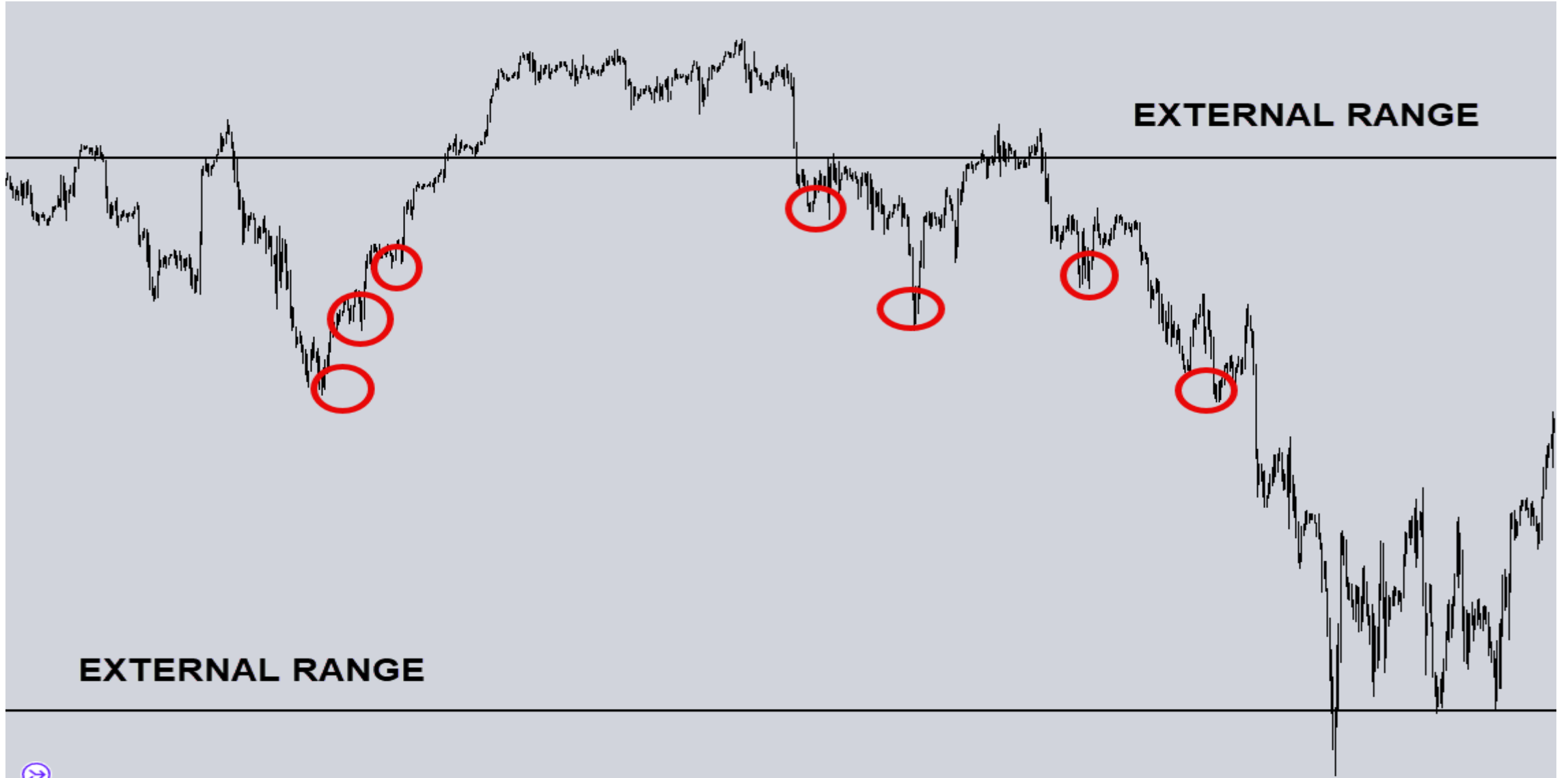
# LIQUIDITY

- Used for manipulation
- Used to maintain equilibrium

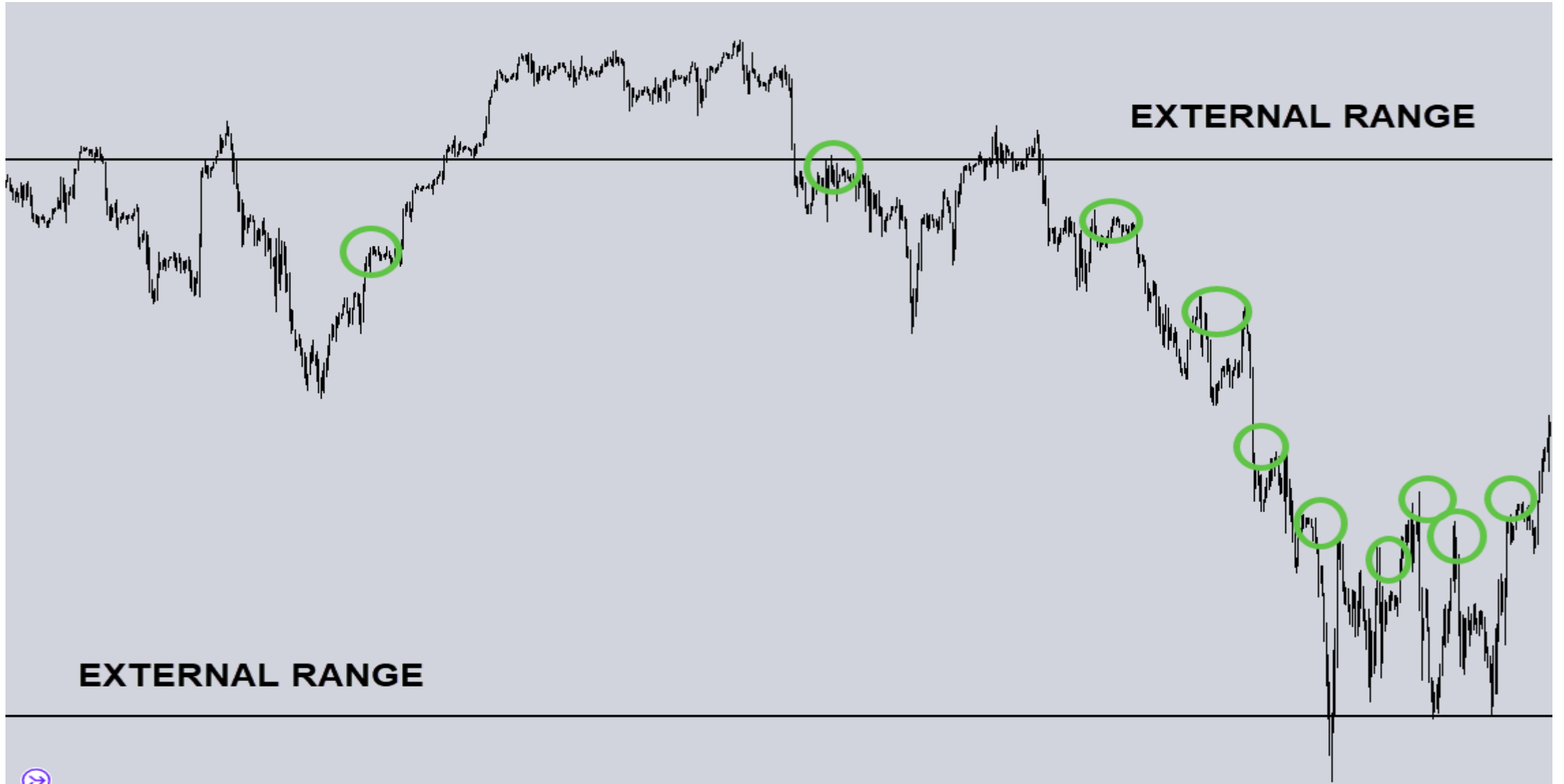
# EXTERNAL RANGE LIQUIDITY



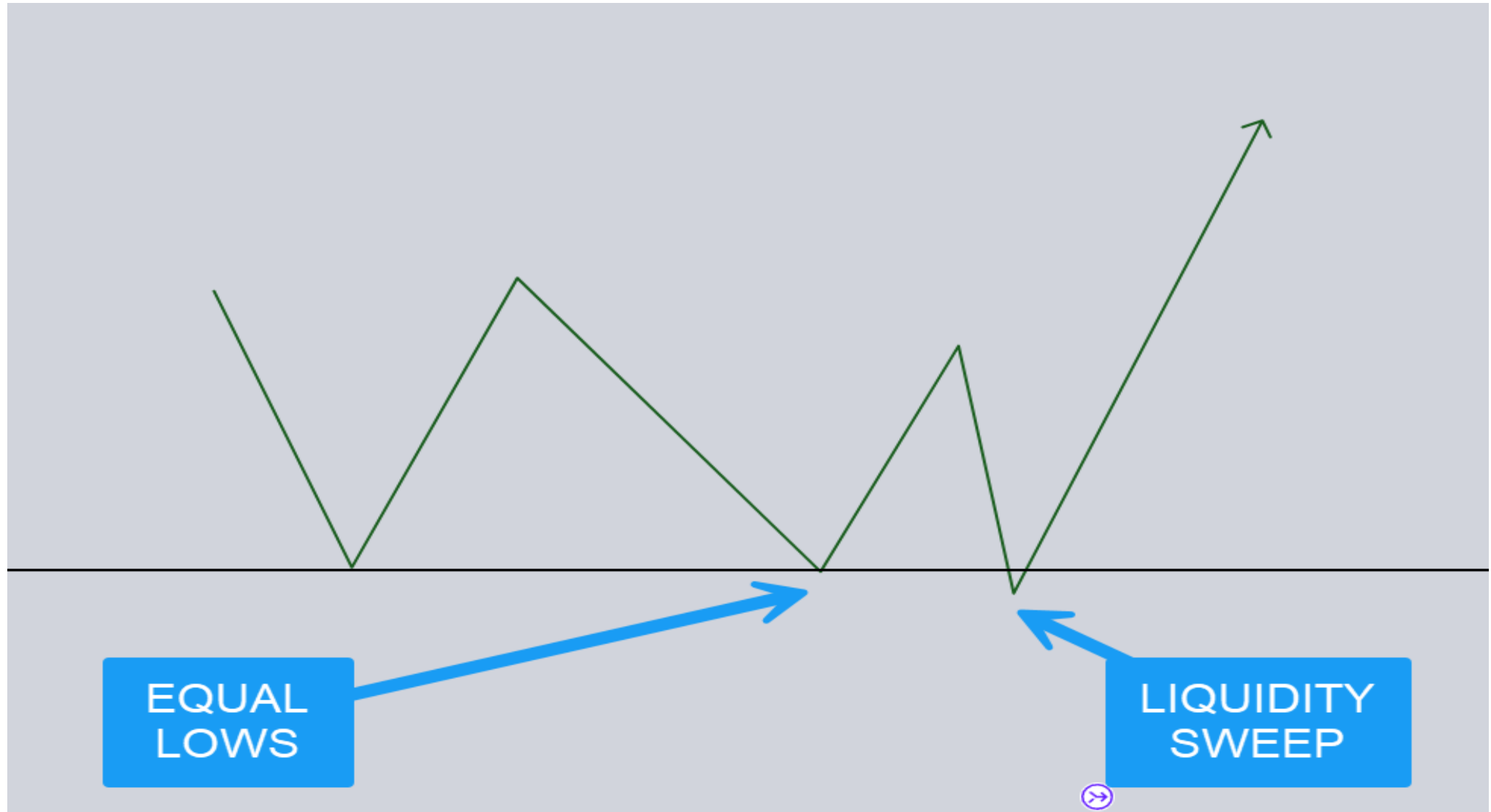
# INTERNAL RANGE LIQUIDITY



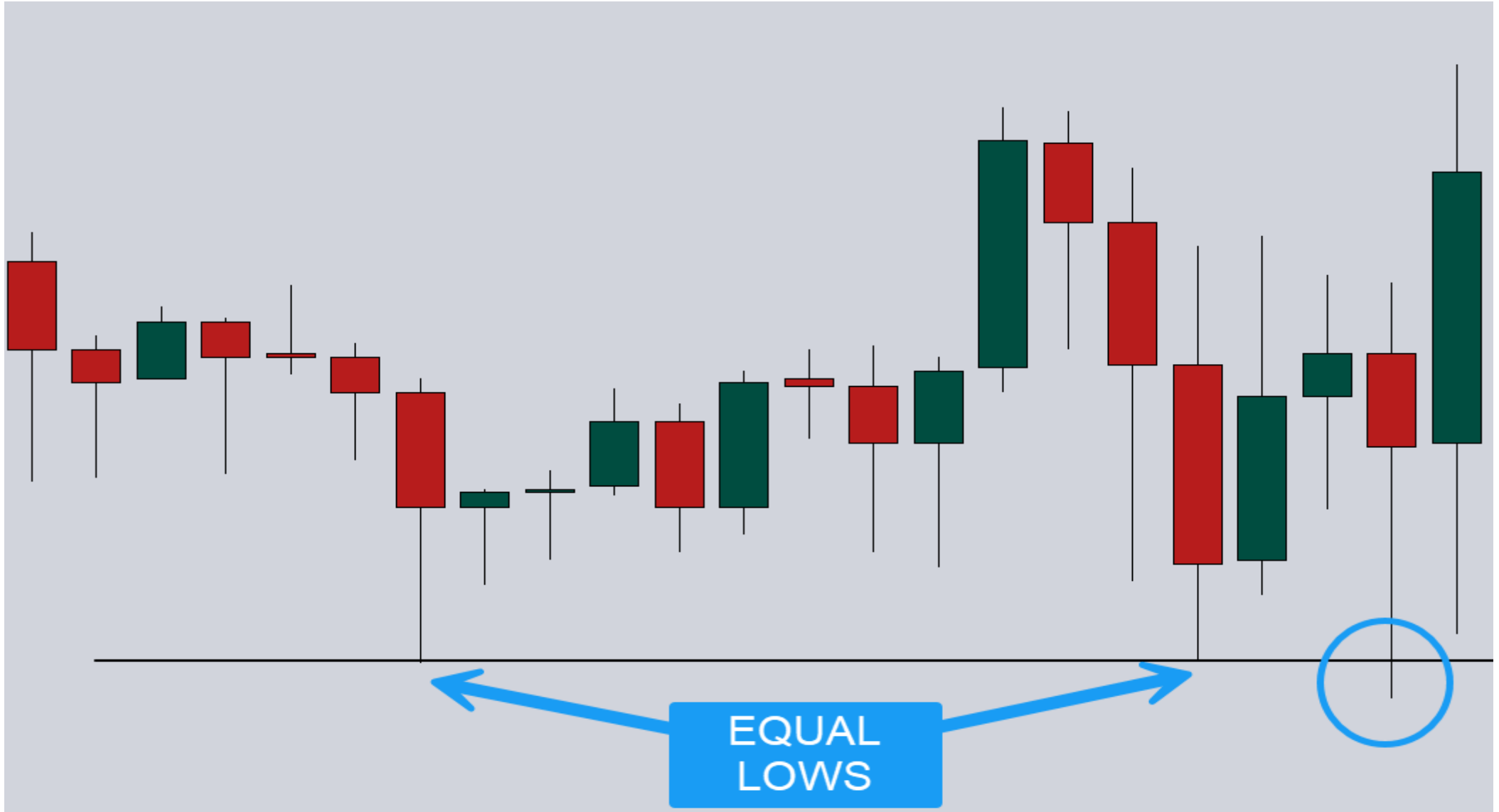
# INTERNAL RANGE LIQUIDITY



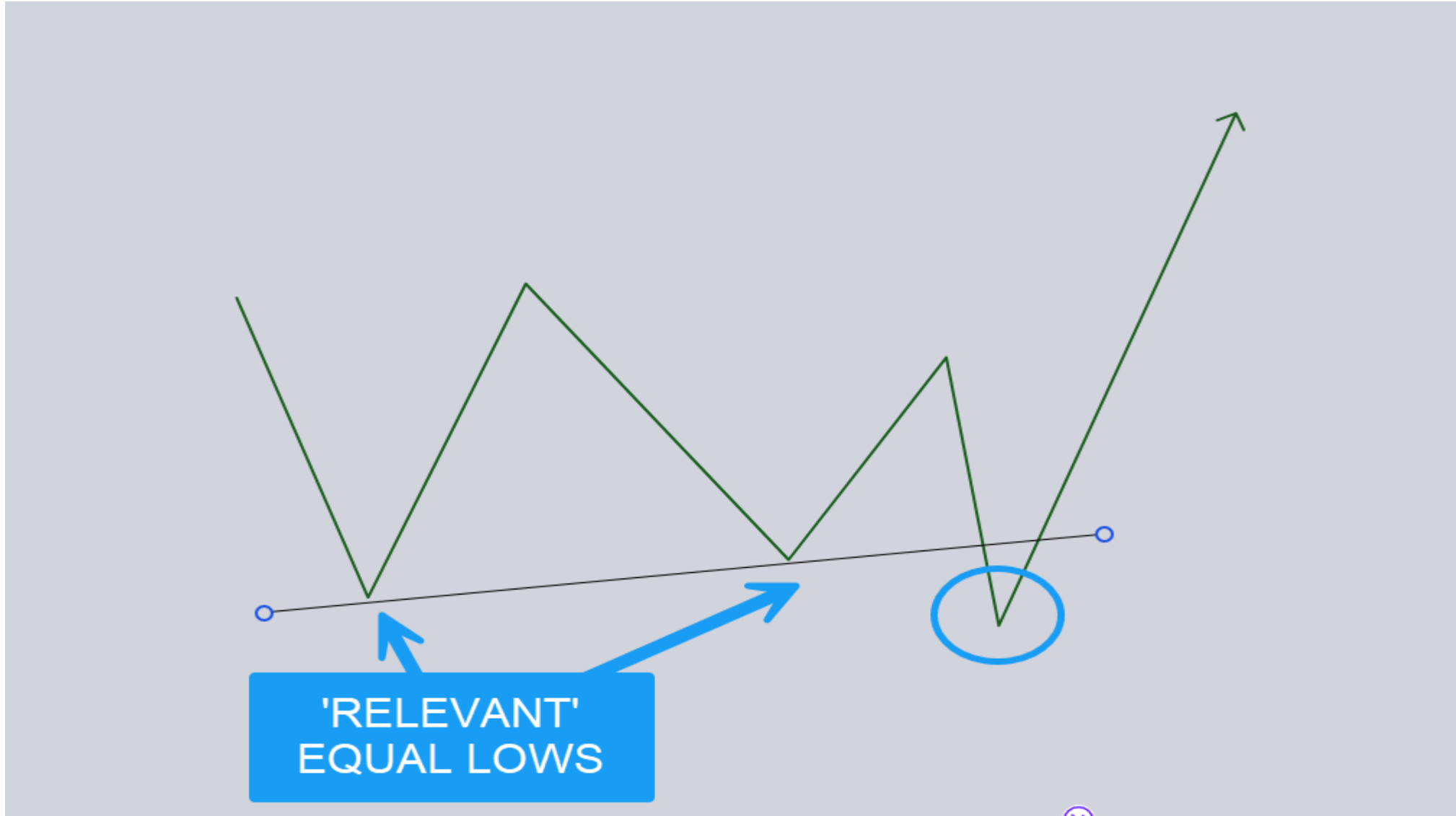
# LIQUIDITY – EQUAL LOWS



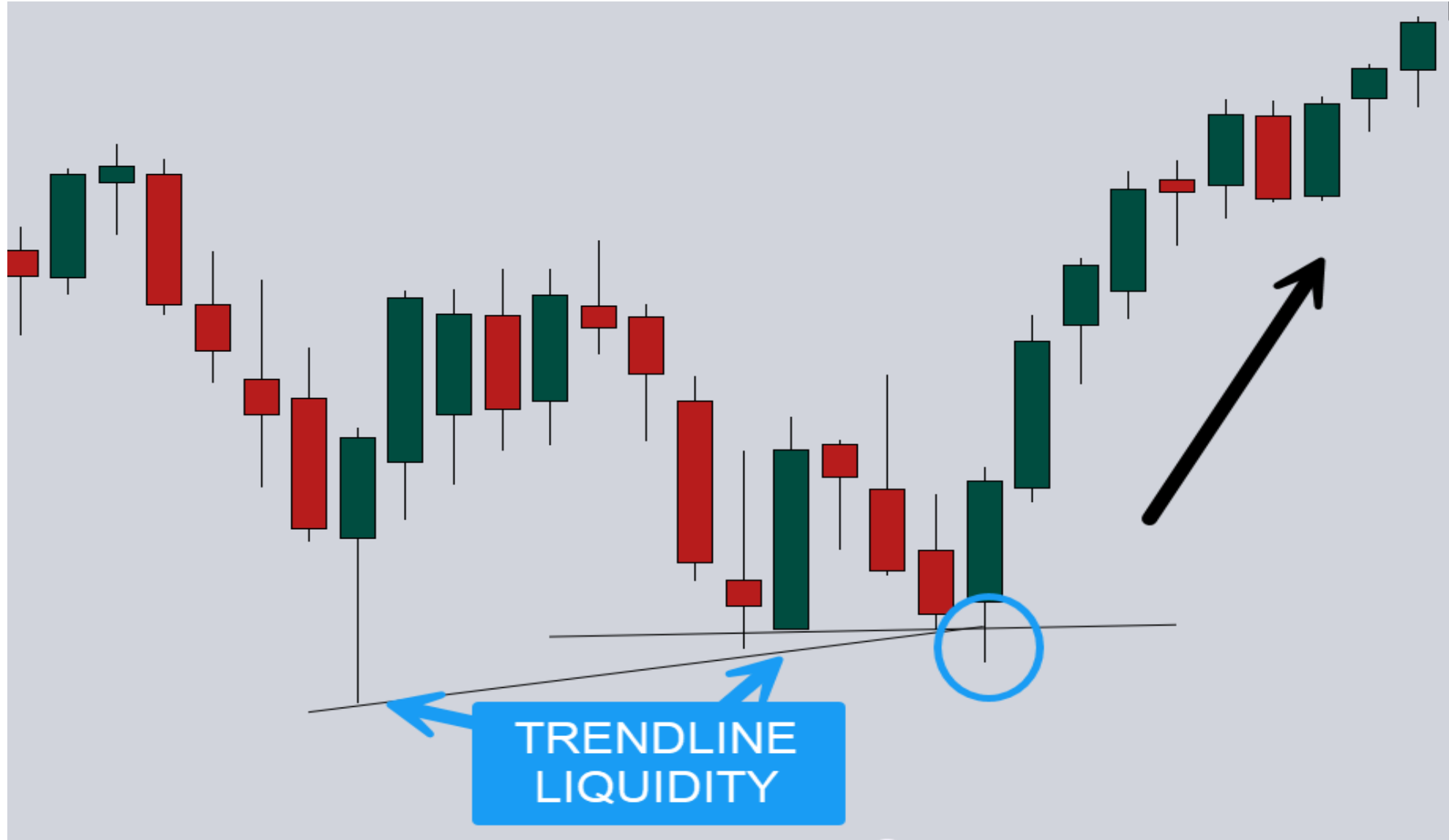
# LIQUIDITY – EQUAL LOWS



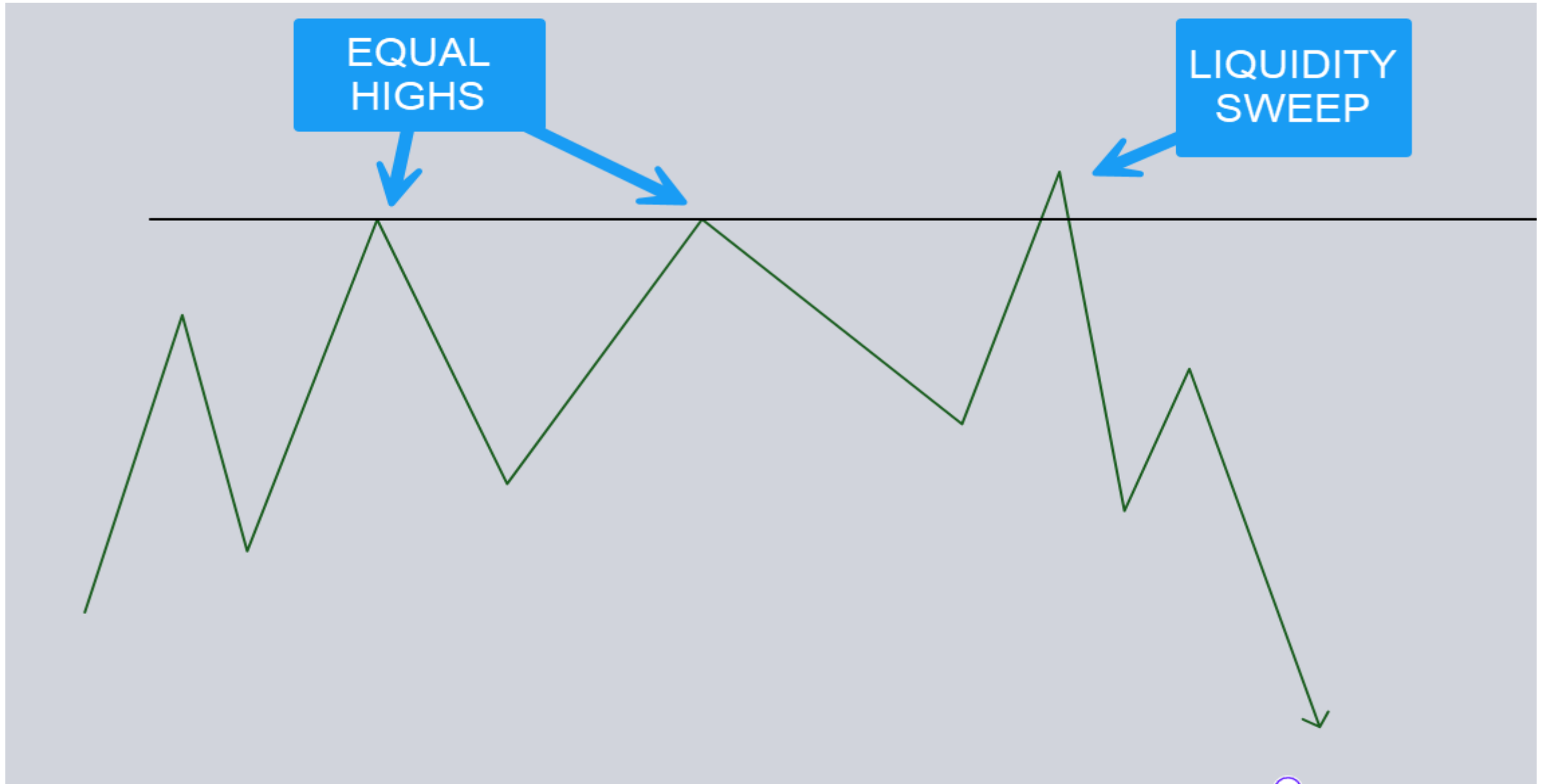
# LIQUIDITY – RELEVANT EQUAL LOWS



# LIQUIDITY – RELEVANT EQUAL LOWS



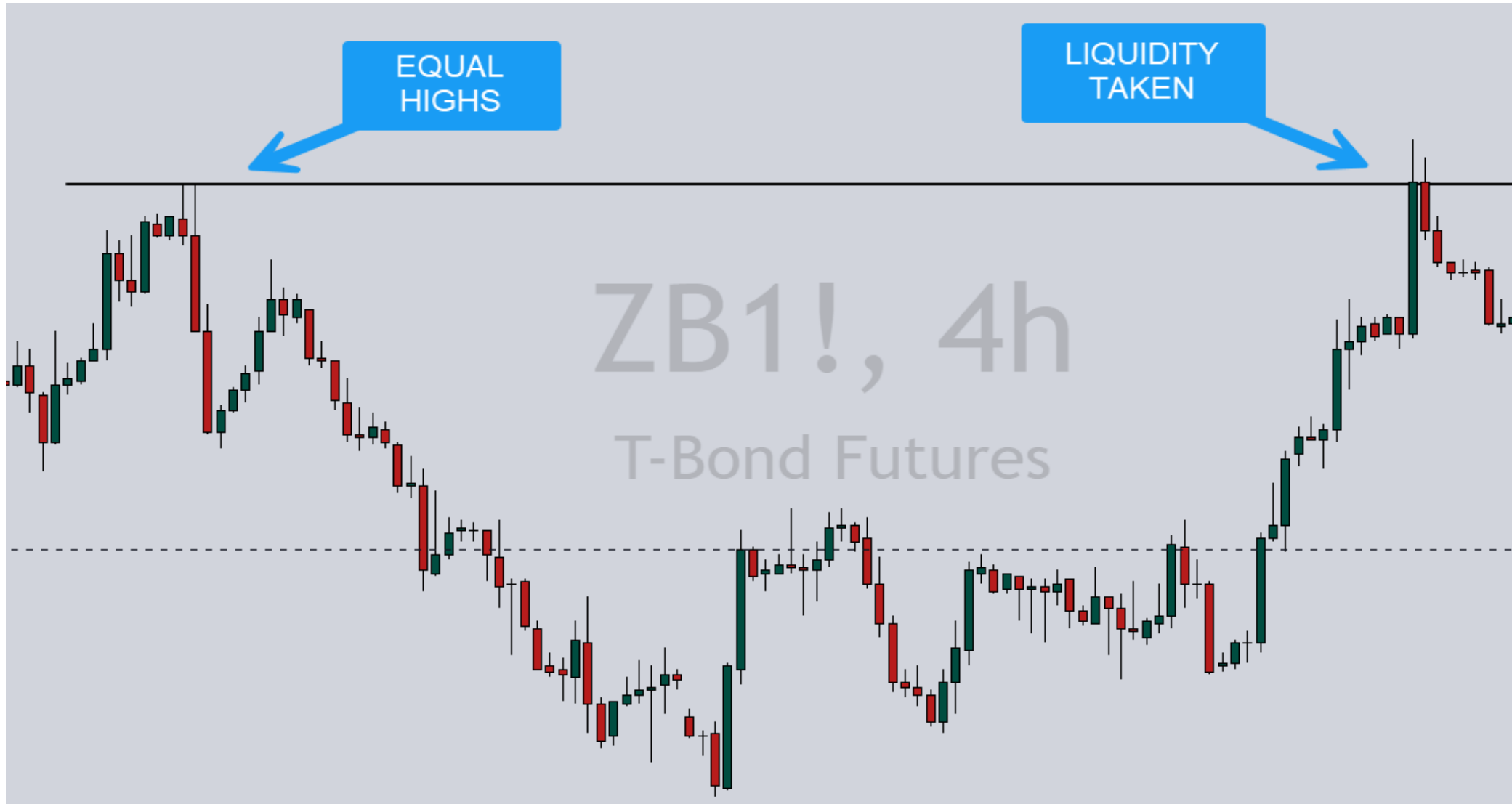
# LIQUIDITY – EQUAL HIGHS



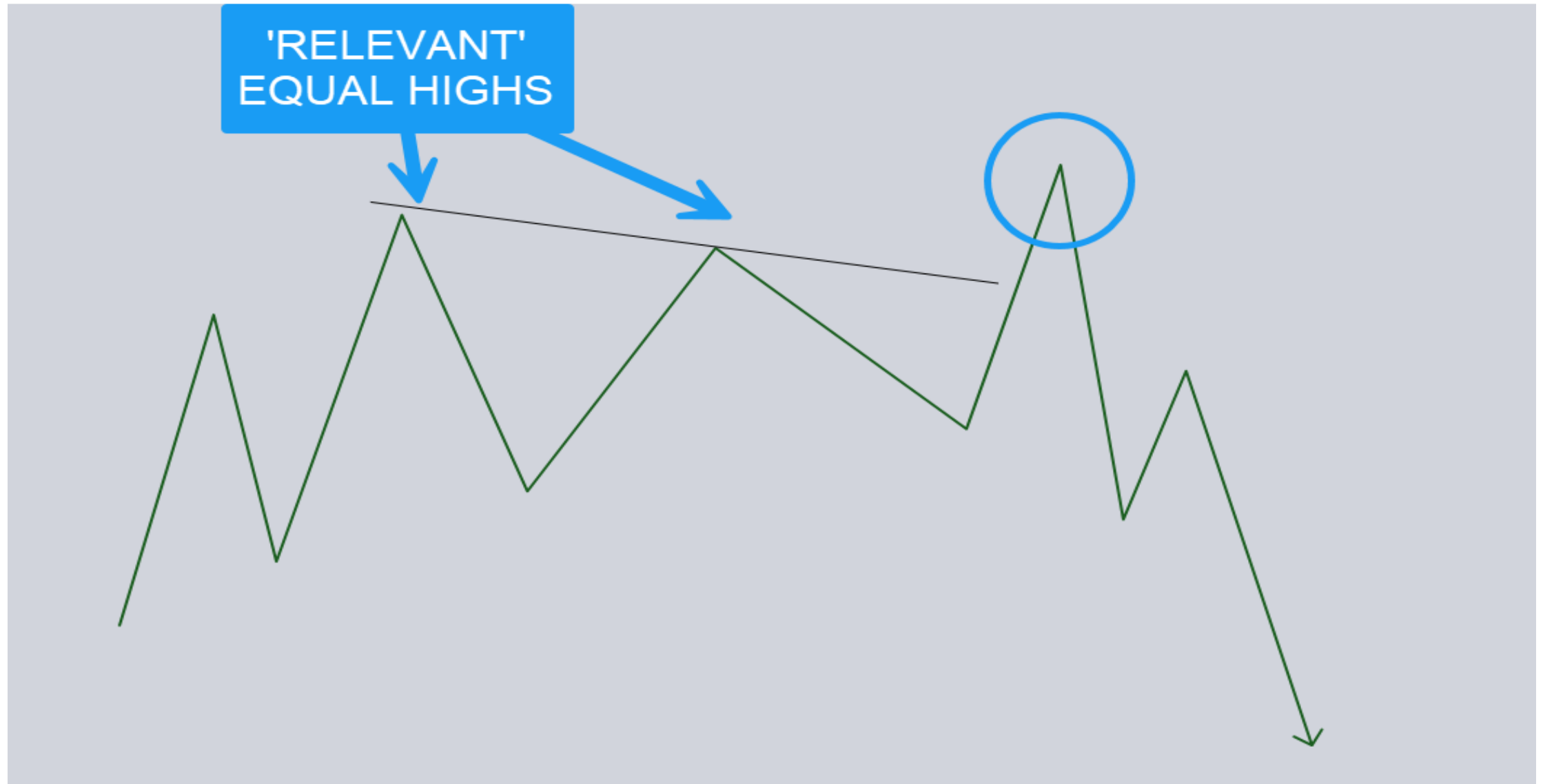
# EQUAL HIGHS



# EQUAL HIGHS



# LIQUIDITY – RELEVANT EQUAL HIGHS



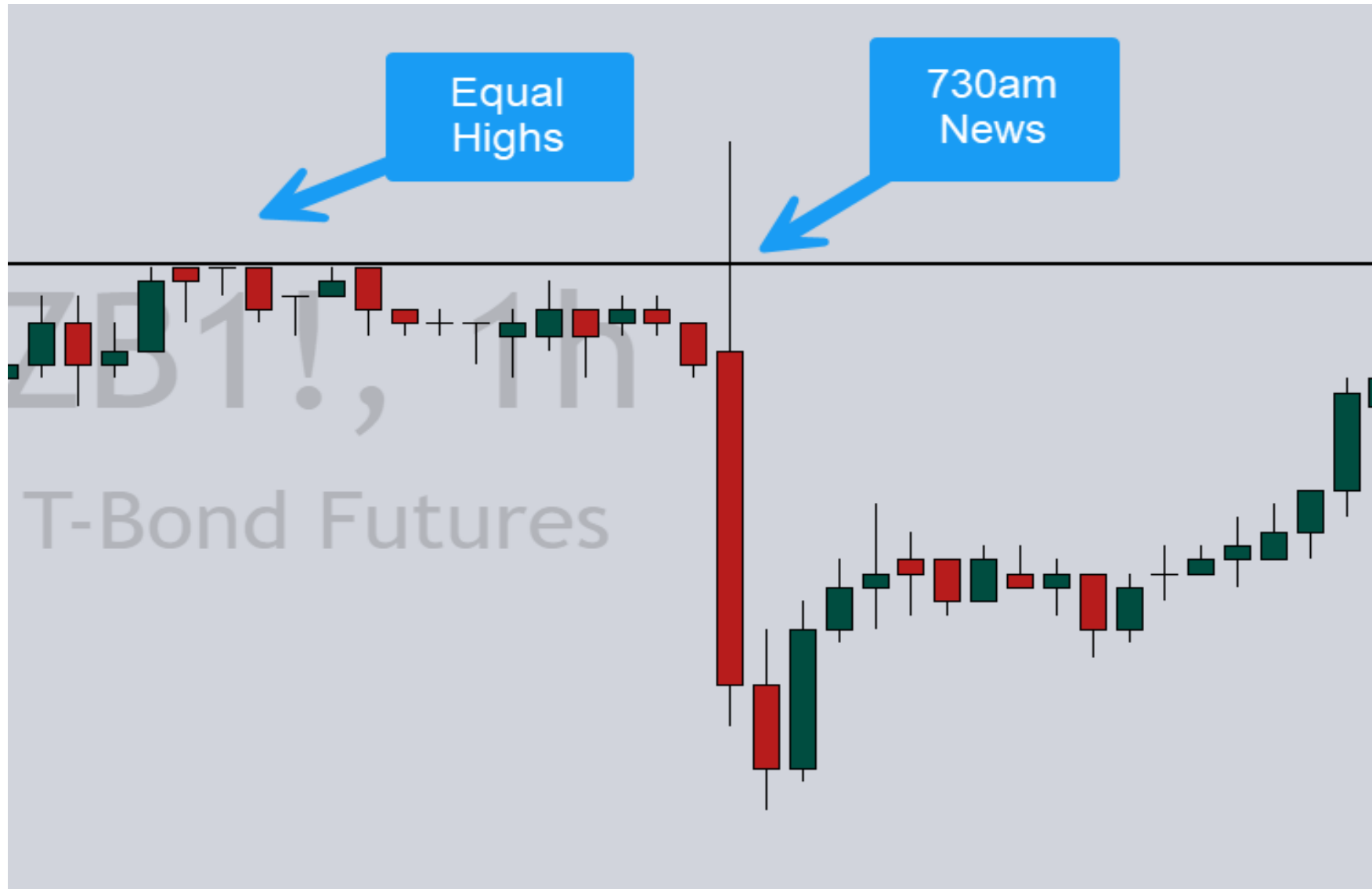
# LIQUIDITY – RELEVANT EQUAL HIGHS



# NEWS

- Institutions, banks, etc LOVE NEWS!
- Used for manipulation

# EQUAL HIGHS



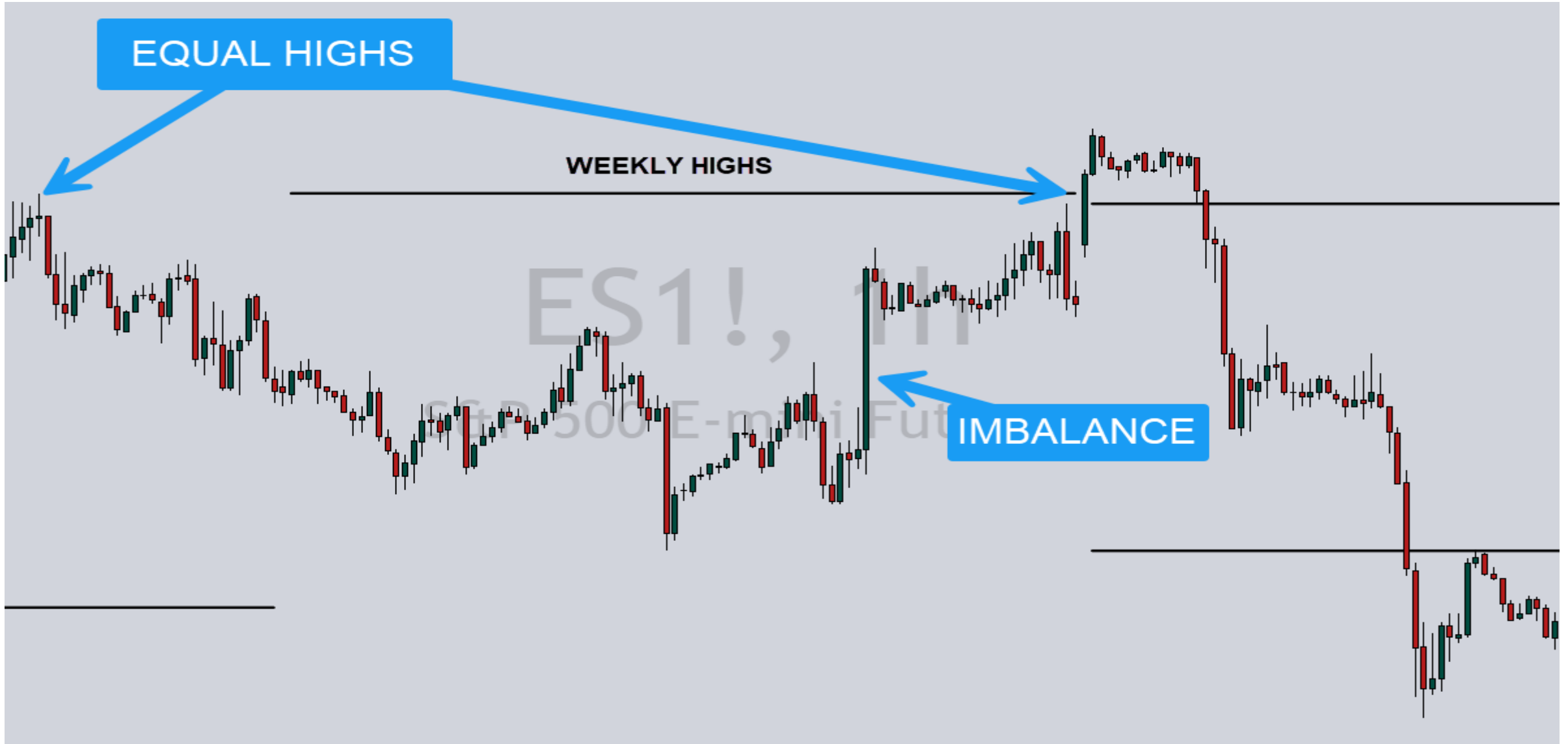
# EQUAL LOWS



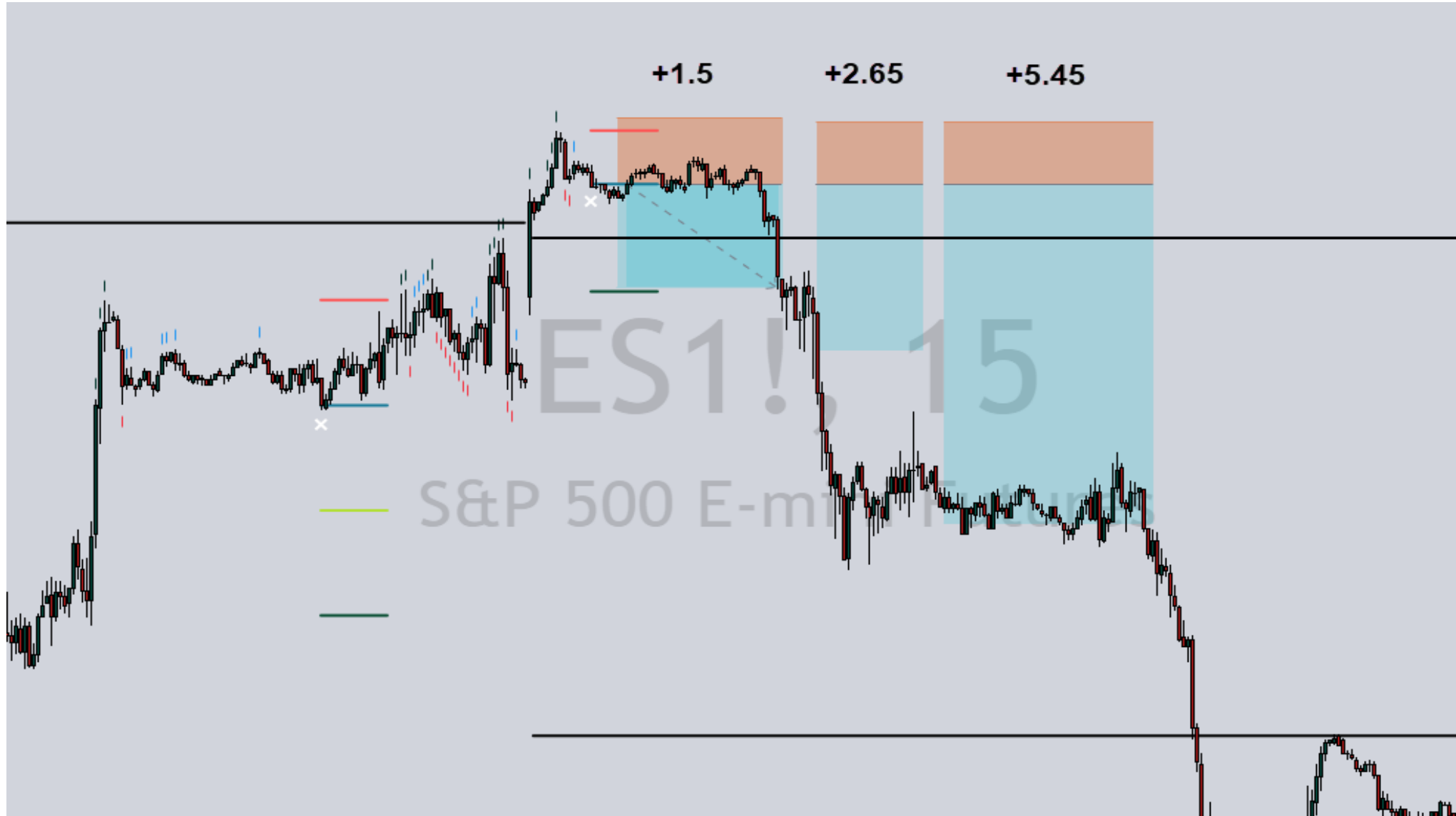
# NEWS!



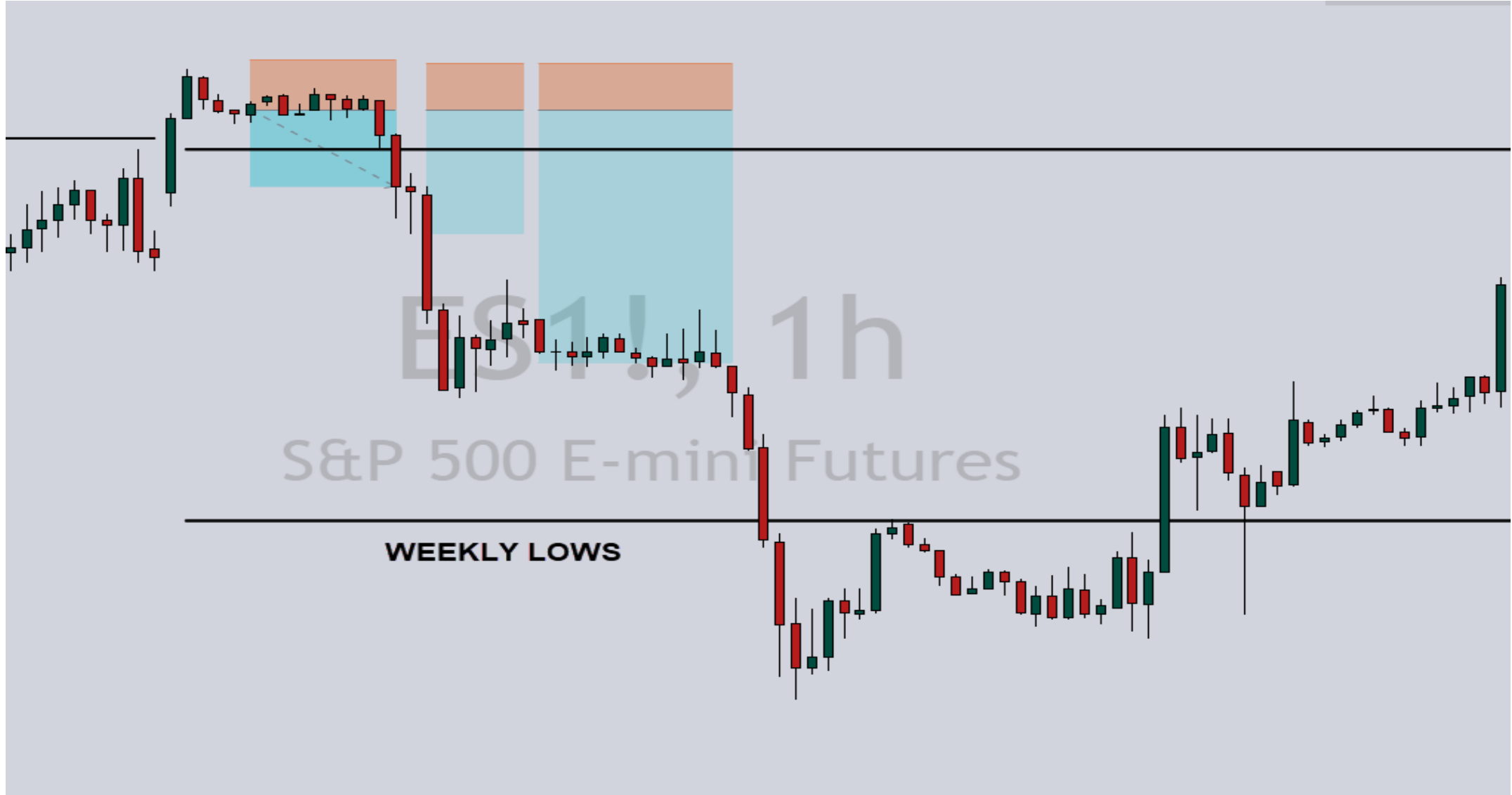
# WEEKLY HIGH SWEEP



# WEEKLY HIGH SWEEP



# WEEKLY LOW SWEEP

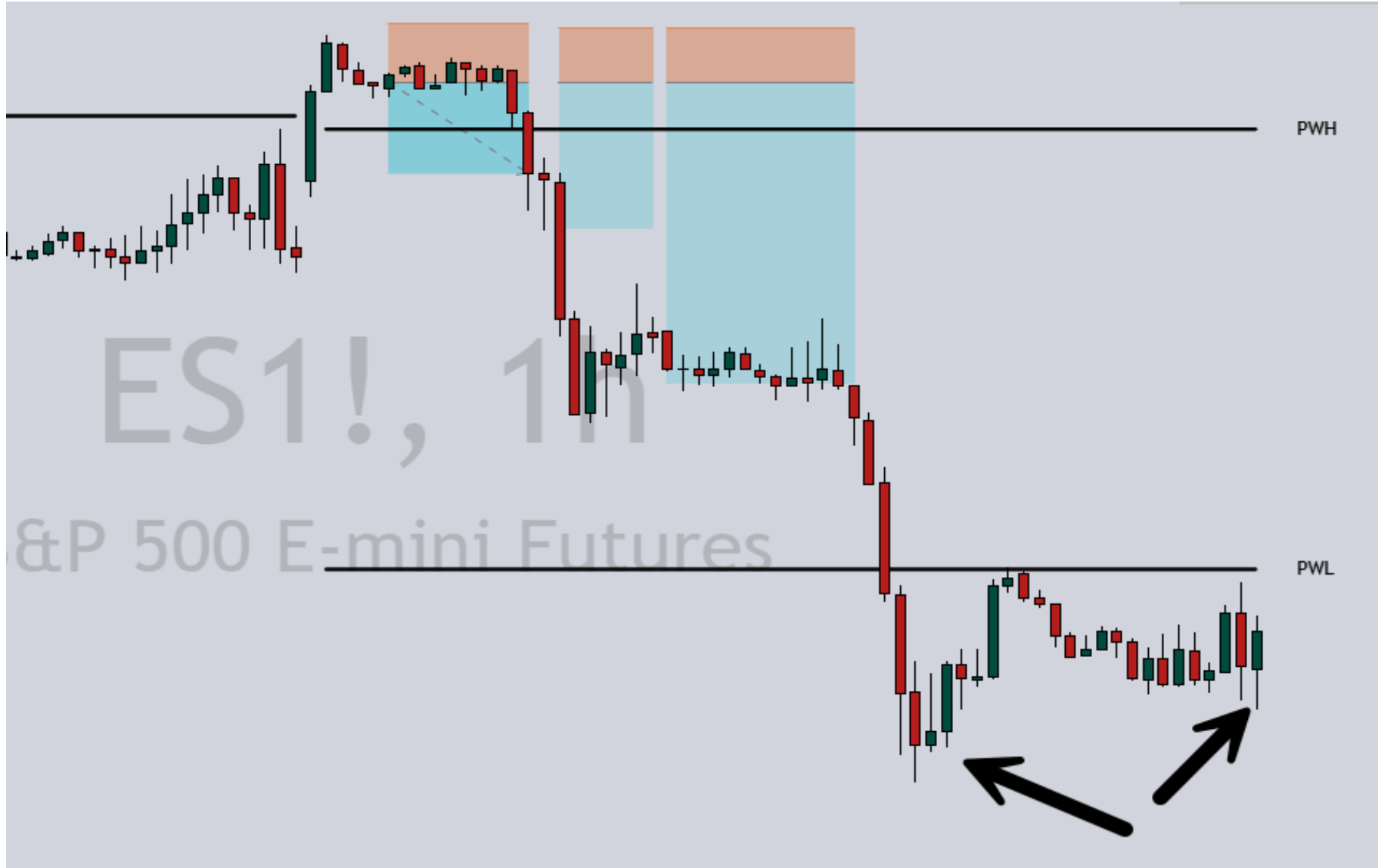




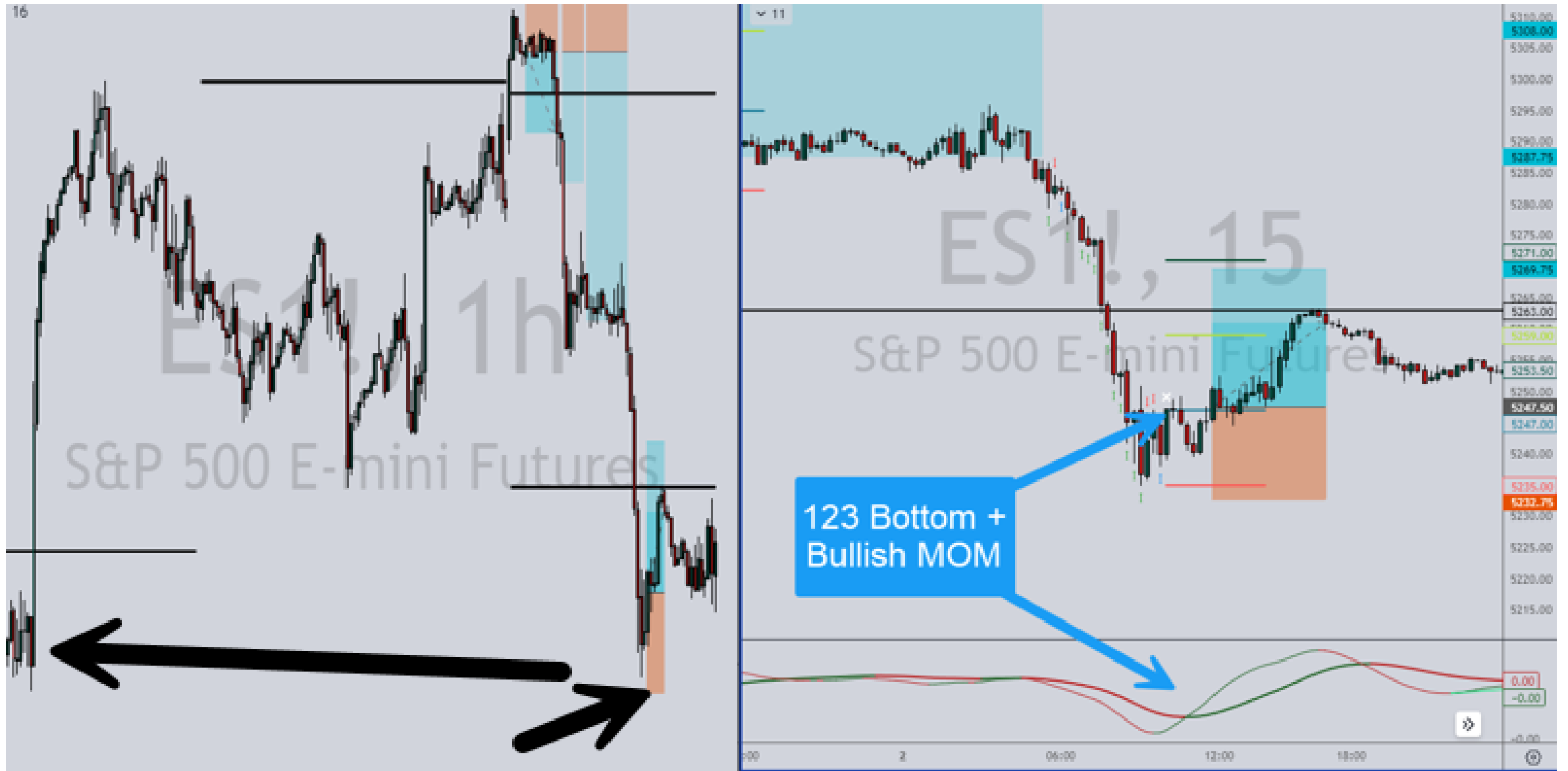
# WEEKLY LOW SWEEP



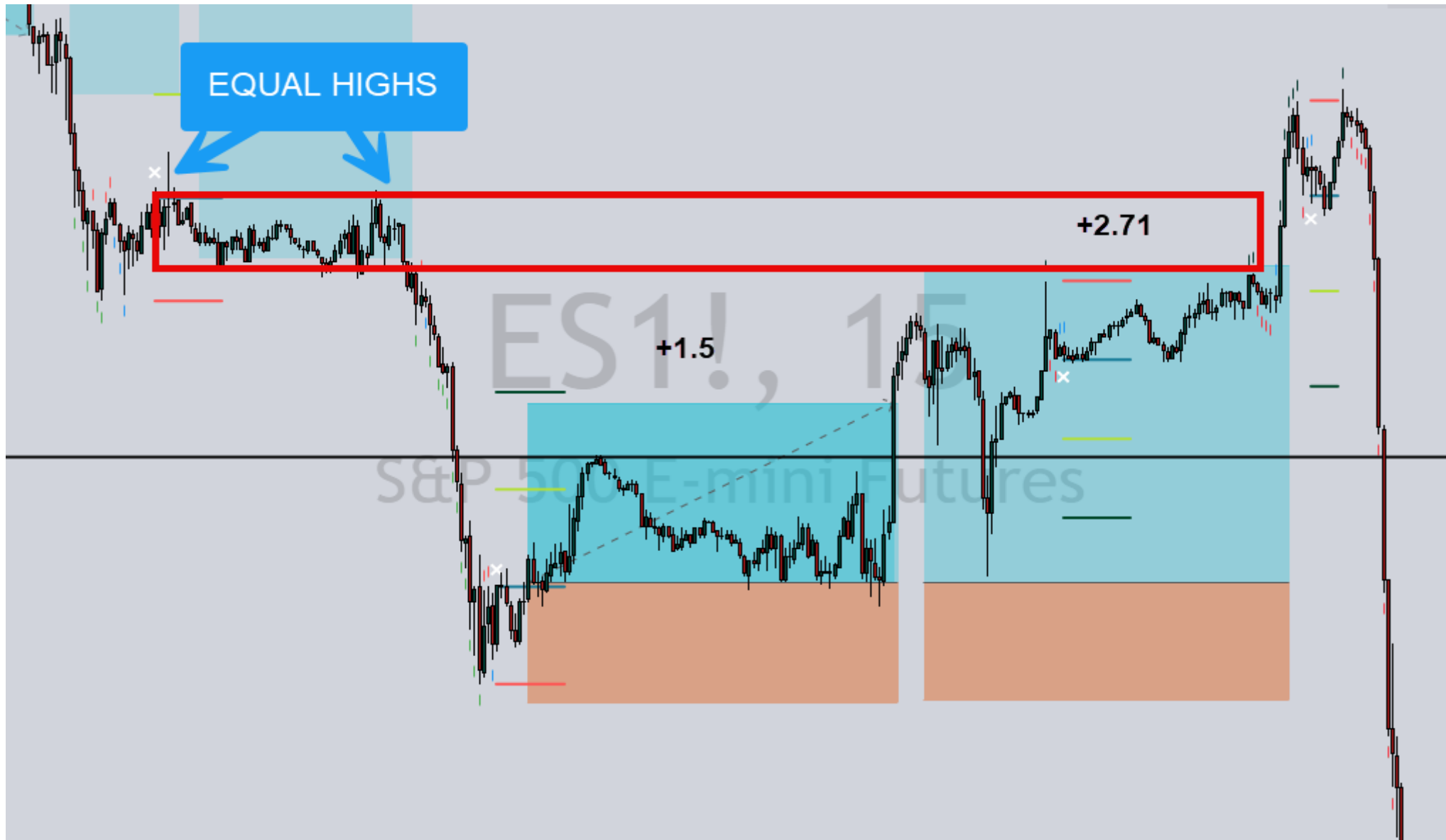
# WEEKLY LOW SWEEP



# WEEKLY LOW SWEEP



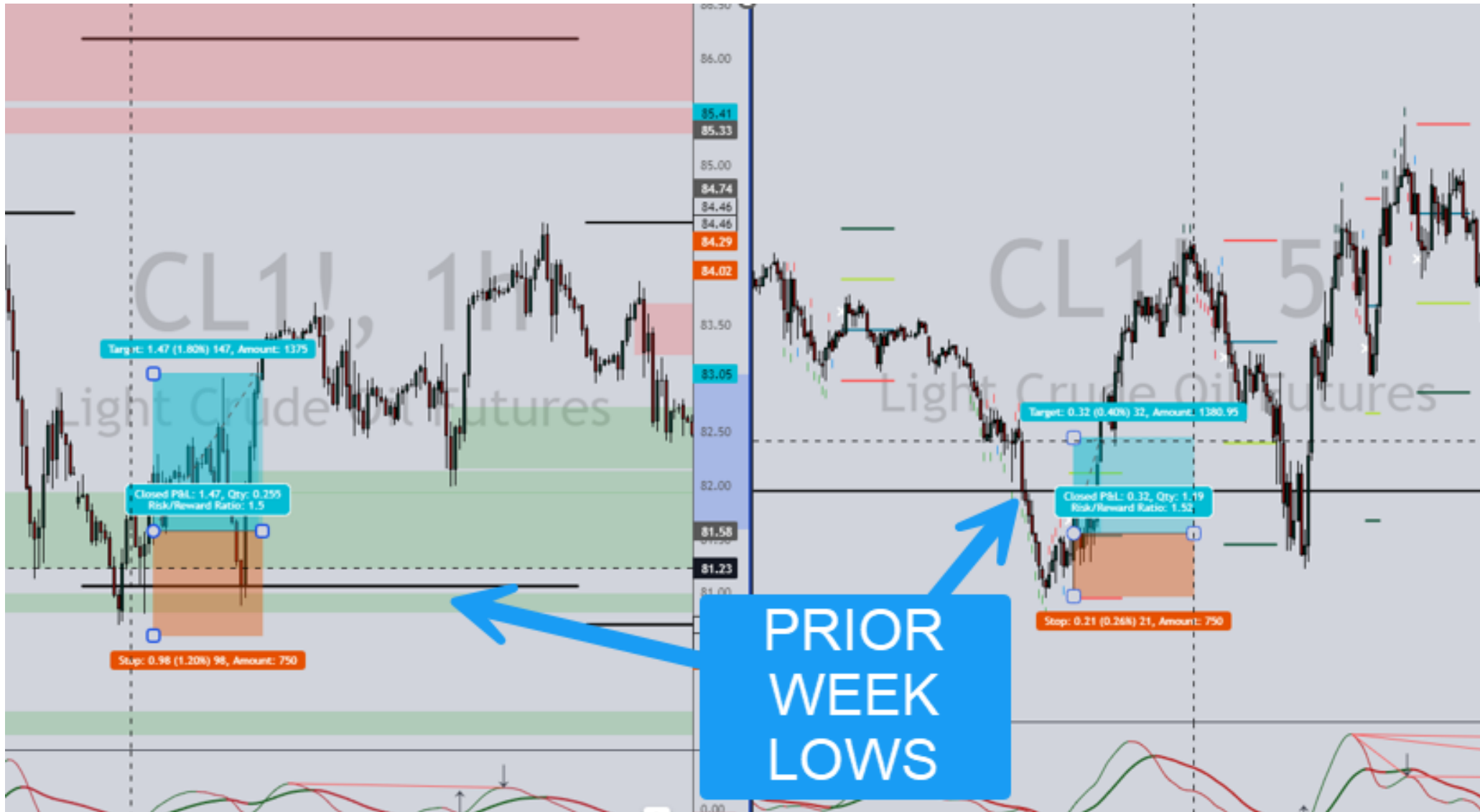
# WEEKLY LOW SWEEP



# BONUS: KEY LEVEL



# BONUS: KEY LEVEL



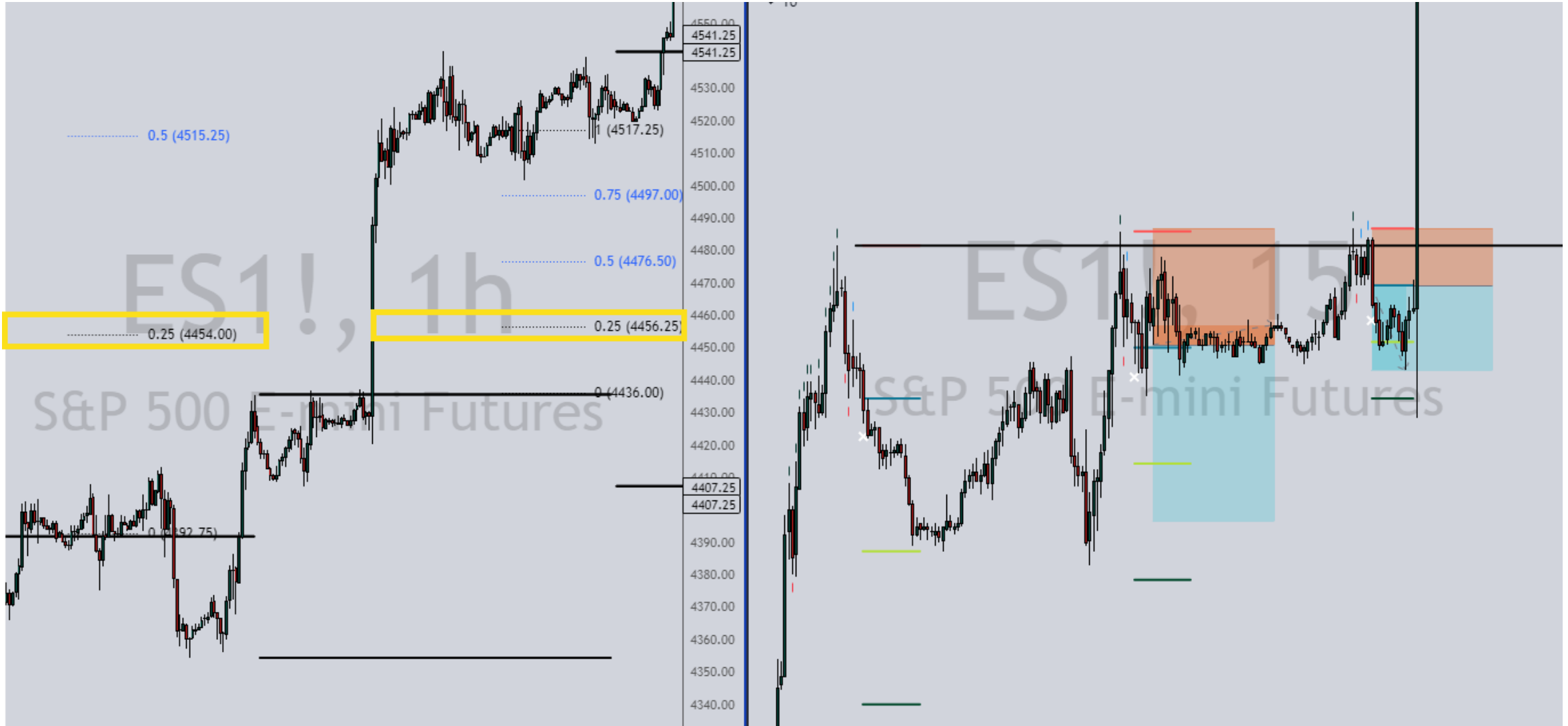
# WHEN TO AVOID

- NEWS!
- 'OBVIOUS' STRONG TRENDS
- 1/4 RANGE PASS

# 'OBVIOUS' STRONG TRENDS



# 1/4 RANGE PASS



# 1/4 RANGE PASS



**STATS**

# STATS

Month	Jan
\$ P/L	\$ 2,513
Trades	50
Wins	16
Win Rate	32%

# STATS

Month	Jan	Feb
\$ P/L	\$ 2,513	\$ 23,759
Trades	50	29
Wins	16	15
Win Rate	32%	52%

# STATS

Month	Jan	Feb	Mar	Apr	AVG
\$ P/L	\$ 2,513	\$ 23,759	\$ 8,149	\$ 14,519	\$ 12,235
Trades	50	29	44	84	51.75
Wins	16	15	21	42	23.5
Win Rate	32%	52%	48%	50%	45%

# STATS

Month	Jan	Feb	Mar	Apr	AVG
\$ P/L	\$ 2,513	\$ 23,759	\$ 8,149	\$ 14,519	\$ 12,235
Trades	50	29	44	84	51.75
Wins	16	15	21	42	23.5
Win Rate	32%	52%	48%	50%	45%
B/E	16	12	7	16	
	32	27	28	58	
	64%	93%	64%	69%	

# CHECKLIST

## LOOK LEFT

*LIQUIDITY TAKEN?*

*IMBALANCE IN THE MARKET?*

*KEY LEVELS?*

*MOMENTUM?*

# GRADING THE TRADE

A+: 4/4

A: 3/4

B: 1-2/4

C: STAY AWAY

**CAN YOU DO THIS?**

