

INSIDER MASTERMIND

May 2024 – ORLANDO, FL

Silas Peters

TRADES
TRENDING

RISK DISCLAIMER

IMPORTANT NOTICE: No representation is being made that the use of this strategy or any system or trading methodology will generate profits. Past performance is not necessarily indicative of future results. There is substantial risk of loss associated with trading securities and options on equities. Only risk capital should be used to trade. Trading stocks, options, futures, forex, and securities are not suitable for everyone. Disclaimer: Futures, Options, Securities and Currency trading all have large potential rewards, but they also have large potential risk. You must be aware of the risks and be willing to accept them in order to invest in these markets. Don't trade with money you can't afford to lose. This website is neither a solicitation nor an offer to Buy/Sell futures, options, stocks, or currencies. No representation is being made that any account will or is likely to achieve profits or losses similar to those discussed on this web site. The past performance of any trading system or methodology is not necessarily indicative of future results.

CFTC RULE 4.41 – HYPOTHETICAL OR SIMULATED PERFORMANCE RESULTS HAVE CERTAIN LIMITATIONS. UNLIKE AN ACTUAL PERFORMANCE RECORD, SIMULATED RESULTS DO NOT REPRESENT ACTUAL TRADING. ALSO, SINCE THE TRADES HAVE NOT BEEN EXECUTED, THE RESULTS MAY HAVE UNDER-OR-OVER COMPENSATED FOR THE IMPACT, IF ANY, OF CERTAIN MARKET FACTORS, SUCH AS LACK OF LIQUIDITY. SIMULATED TRADING PROGRAMS IN GENERAL ARE ALSO SUBJECT TO THE FACT THAT THEY ARE DESIGNED WITH THE BENEFIT OF HINDSIGHT. NO REPRESENTATION IS BEING MADE THAT ANY ACCOUNT WILL OR IS LIKELY TO ACHIEVE PROFIT OR LOSSES SIMILAR TO THOSE SHOWN.

RISK : REWARD

- 1.5 – 2 Reward vs Our Risk is initial goal
- 40-60% win rate is sufficient
- Fixed 'R' removes emotions
- Set and forget

RISK : REWARD

- Singles and doubles
- Triples and home runs
- The Grand Slam

FOUNDATIONS

- KEY MARKETS

KEY MARKETS

- Emini SP (ES) / Micro ES (MES)
- Mini Nasdaq (NQ) / Micro NQ (MNQ)
- Crude Oil (CL) / Mini Crude (QM) / Micro Crude (MCL)
- Gold (GC) / Mini Gold (QO) / Micro Gold (MGC)
- 30YR Bond (ZB)

TICK / POINT VALUES

- Emini SP (ES) : \$12.50 / \$50
- Mini Nasdaq (NQ) \$5 / \$20
- Crude Oil (CL): \$10 / \$1000
- Gold (GC) : \$10 / \$100
- 30YR Bond (ZB) : \$31.25 / \$1000

TICK / POINT VALUES

- Micro ES (MES) : \$1.25 / \$12.50
- Micro NQ (MNQ): .50 / \$2
- Mini Crude (QM): \$12.5 / \$50
- Micro Crude (MCL): \$1 / \$10
- Mini Gold (QO) : \$12.50 / \$50
- Micro Gold (MGC) : \$1 / \$10

KEY MARKETS

- Australian Dollar (6A) / Micro Aussie \$ (M6A)
- British Pound (6B) / Micro Pound (M6B)
- Canadian Dollar (6C) / Micro Canadian \$ (M6C)
- Eurocurrency (6E) / Micro Euro (M6E)
- Japanese Yen (6J) / Micro Yen (M6J)

TICK / POINT VALUES

- Australian Dollar (6A): \$5.00 / \$10.00
- Micro Aussie \$ (M6A): \$.50 / \$5.00
- British Pound (6B): \$6.25 / \$6.25
- Micro Pound (M6B): \$.625 / \$.625
- Canadian Dollar (6C): \$5.00 / \$10.00
- Micro Canadian \$ (M6C): \$.50 / \$5.00
- Eurocurrency (6E): \$6.25 / \$12.50
- Micro Euro (M6E): \$.625 / \$1.25
- Japanese Yen (6J): \$6.25 / \$12.50
- Micro Yen (M6J): \$.625 / \$1.25

BE MINDFUL OF CORRELATIONS

- Indices & Currencies
- Gold & Aussie \$
- Canadian Dollar & Crude Oil
- Japanese Yen & 30YR Bonds

CHART SETUP / LAYOUT

- Weekly/Daily
- 4H
- 1H

INDICATORS / TOOLS

- Titan Levels
- 3S Code
- TPI Divergence

CONFLUENCE 'ADD-ONS'

- Moving Averages
- Fibonacci

CANDLESTICKS

- Pin Bars
- Engulfing Bars
- Inside Bars

PRICE ACTION EDGE (PAE)

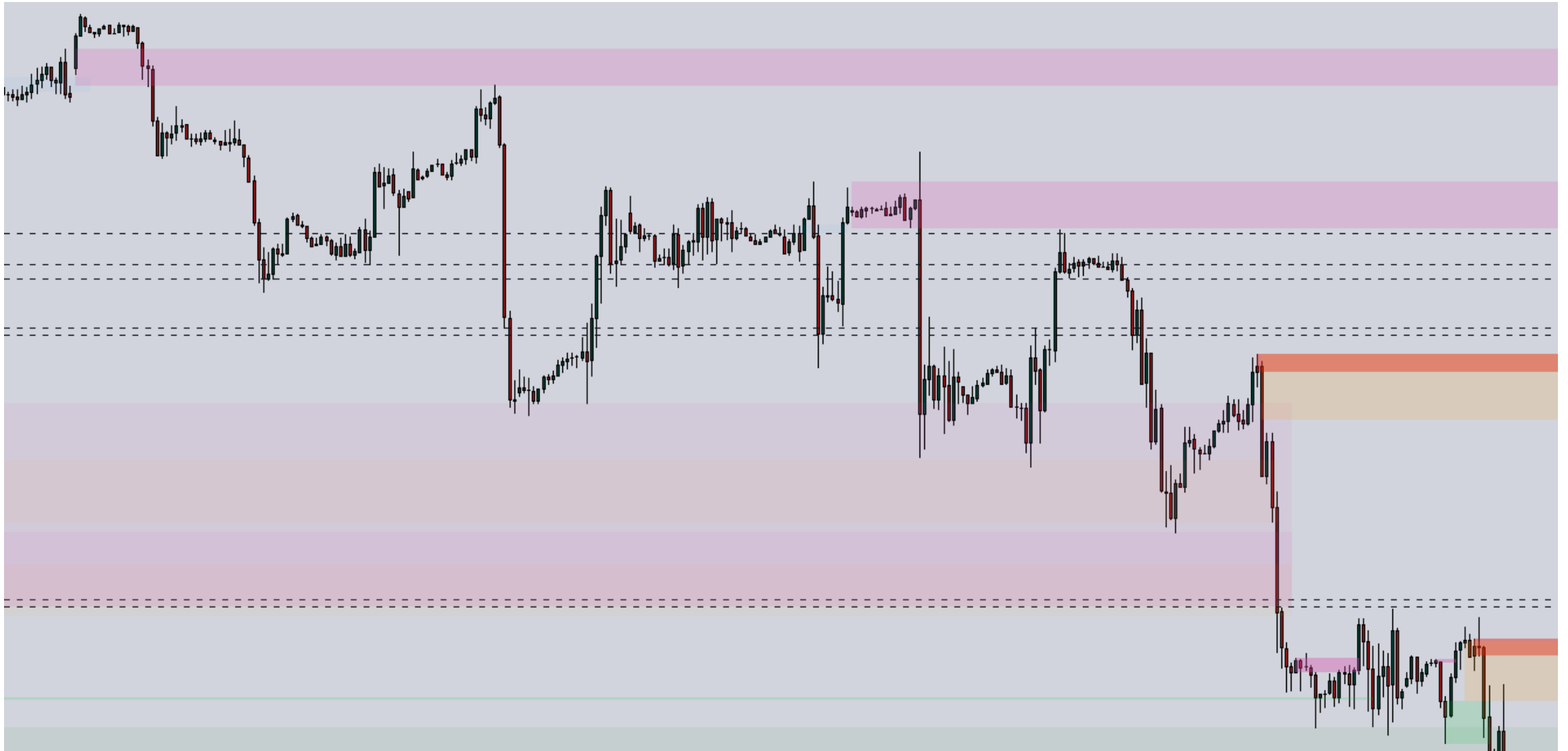
- Chart Setup / Layout



RULES

- **Higher Timeframe Titan Levels**
- 3S CODE Signals
- TPI Divergence Signals
- Candlestick Confirmations

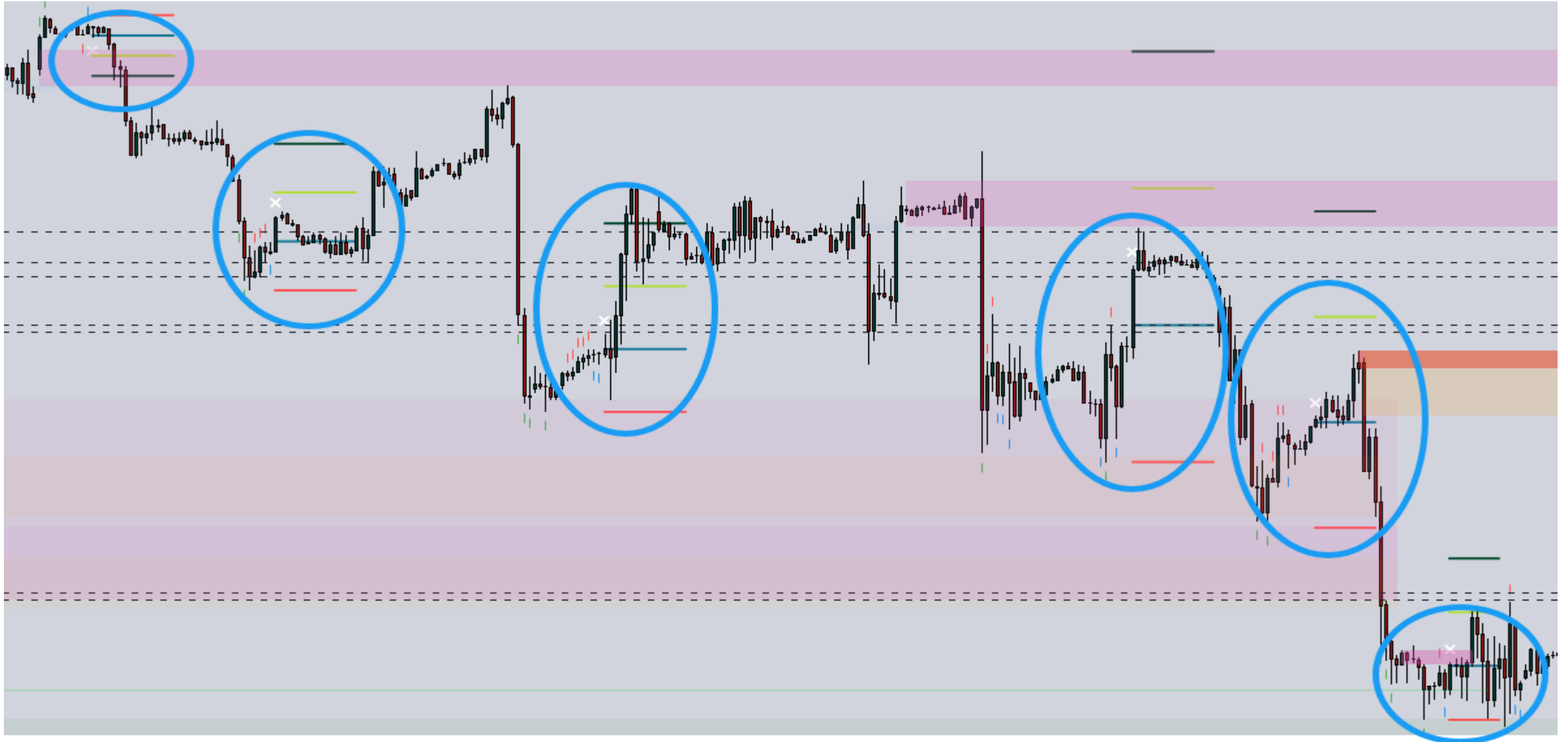
TITAN LEVELS



RULES

- Higher Timeframe Titan Levels
- **3S CODE Signals**
- TPI Divergence Signals
- Candlestick Confirmations

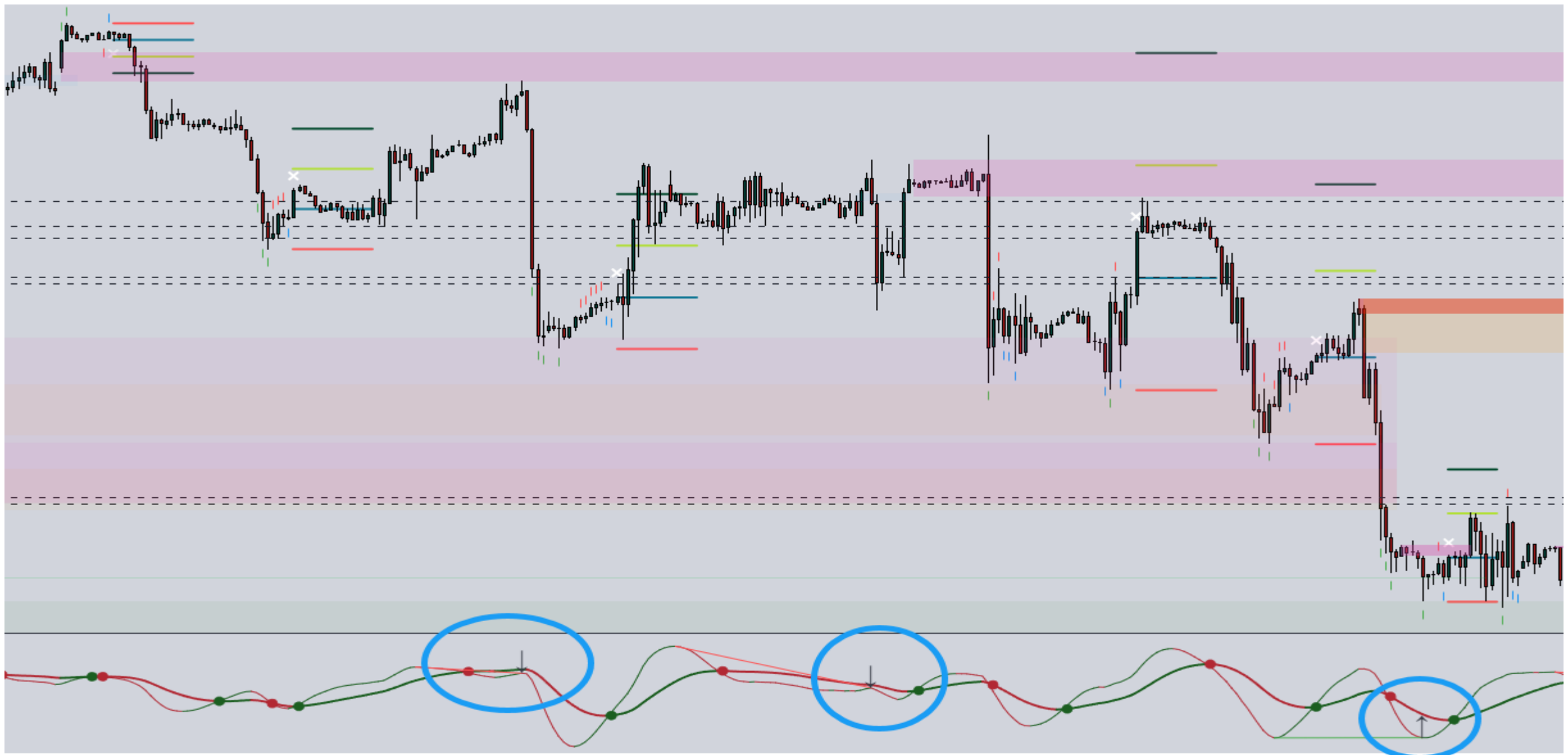
3S CODE SIGNALS



RULES

- Higher Timeframe Titan Levels
- 3S CODE Signals
- **TPI Divergence Signals**
- Candlestick Confirmations

TPI DIVERGENCE



RULES

- Higher Timeframe Titan Levels
- 3S CODE Signals
- TPI Divergence Signals
- **Candlestick Confirmations**

CANDLESTICK CONFIRMATIONS

BULLISH

- Hammer/Pin



- Engulfing



- Tweezers



- Morning Star



CANDLESTICK CONFIRMATIONS

BEARISH

- Hammer/Pin



- Engulfing



- Tweezers



- Evening Star



CANDLESTICK CONFIRMATIONS

INDECISION

- Spinners



- Doji



POP QUIZ

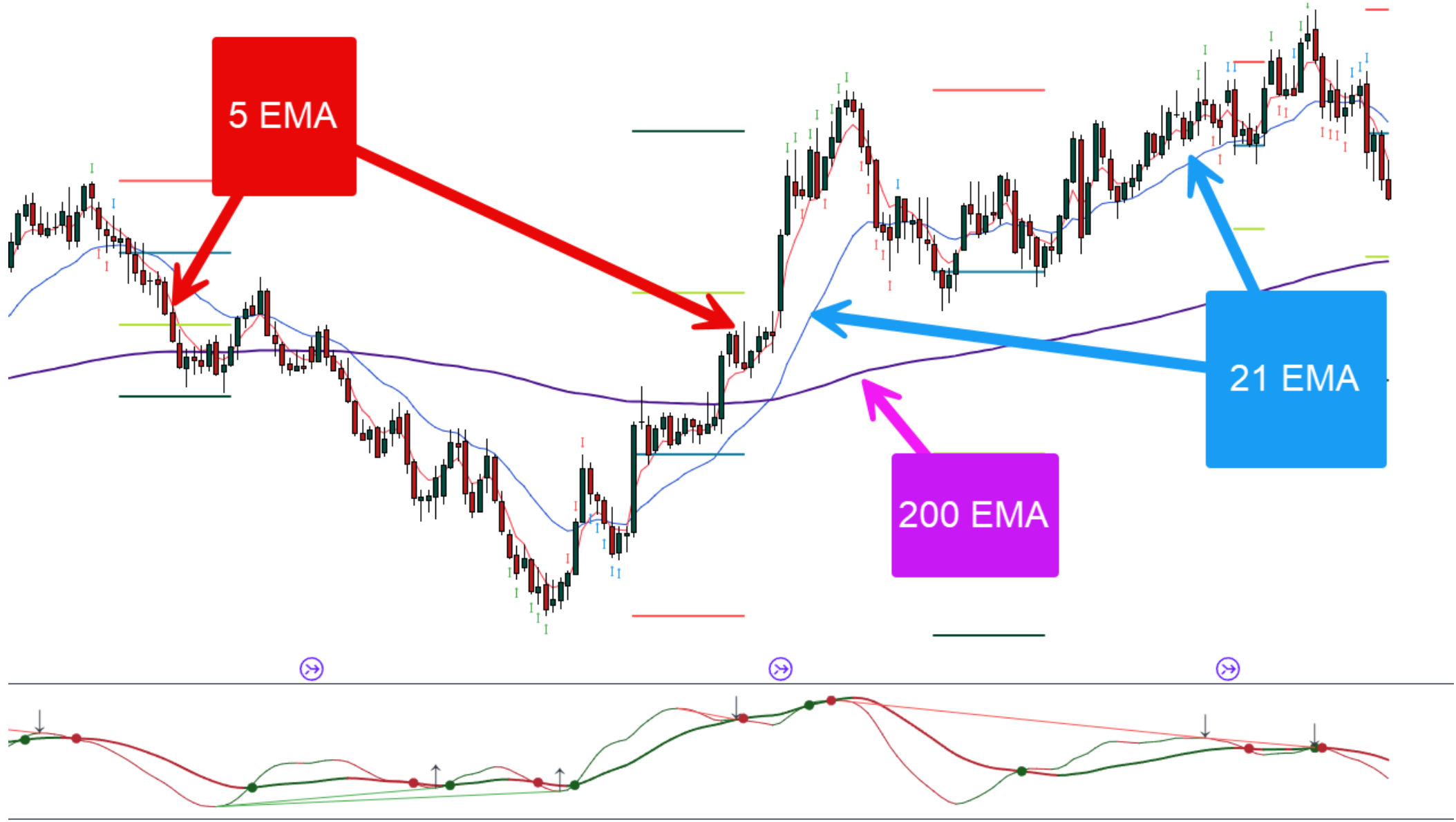
CONFLUENCE 'ADD-ONS'

- **Moving Averages**
- **Fibonacci**

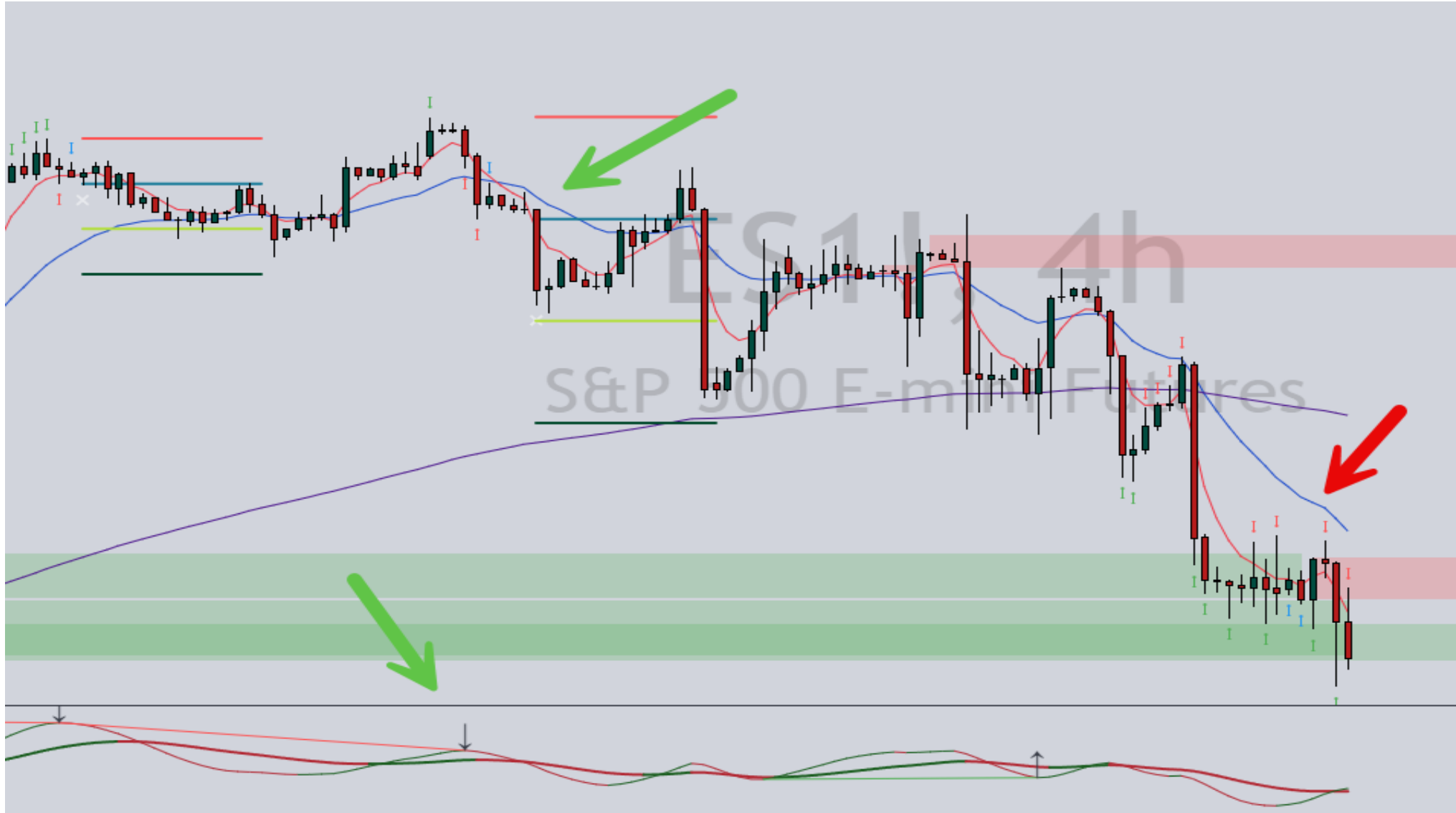
MOVING AVERAGES

- 5/21 EMA: Short-term Timing
- 200 EMA: Longer-term Trend

MOVING AVERAGES



MOVING AVERAGES



POP QUIZ

CONFLUENCE 'ADD-ONS'

- Moving Averages
- **Fibonacci**

FIBONACCI

- .50
- .618
- .786

FIBONACCI

- EQUILIBRIUM (50)
- DISCOUNT (618, 786 when BUYING)
- PREMIUM (618, 786 when SELLING)

EQUILIBRIUM



FIBONACCI

- EQUILIBRIUM (50)
- DISCOUNT (618, 786 when **BUYING**)
- PREMIUM (618, 786 when **SELLING**)

DISCOUNT



FIBONACCI

- EQUILIBRIUM (50)
- DISCOUNT (618, 786 when **BUYING**)
- PREMIUM (618, 786 when **SELLING**)

PREMIUM



FIBONACCI



FIBONACCI



FIBONACCI



FIBONACCI



FIBONACCI



FIBONACCI



FIBONACCI



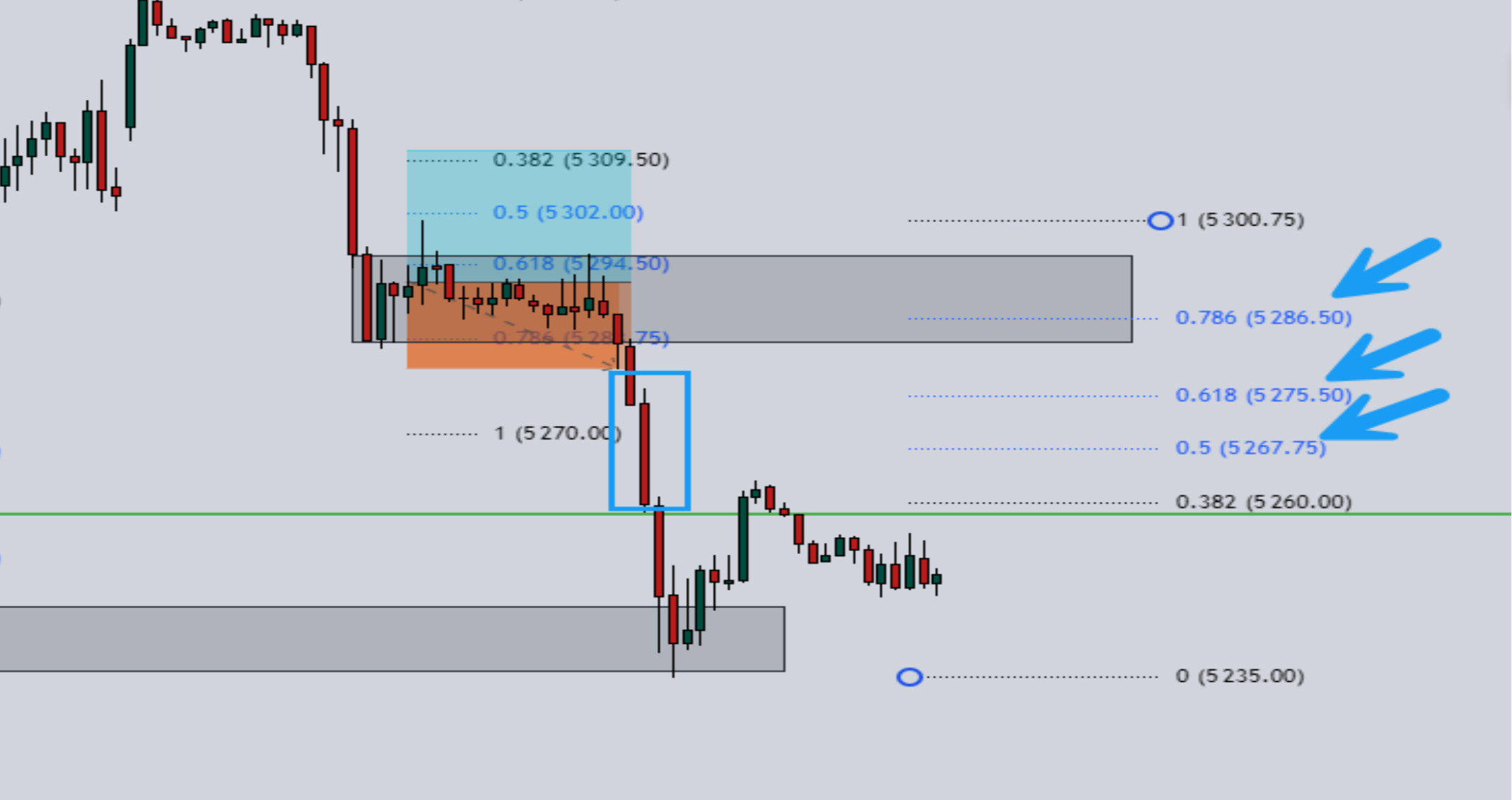
FIBONACCI



FIBONACCI



FIBONACCI



FIBONACCI



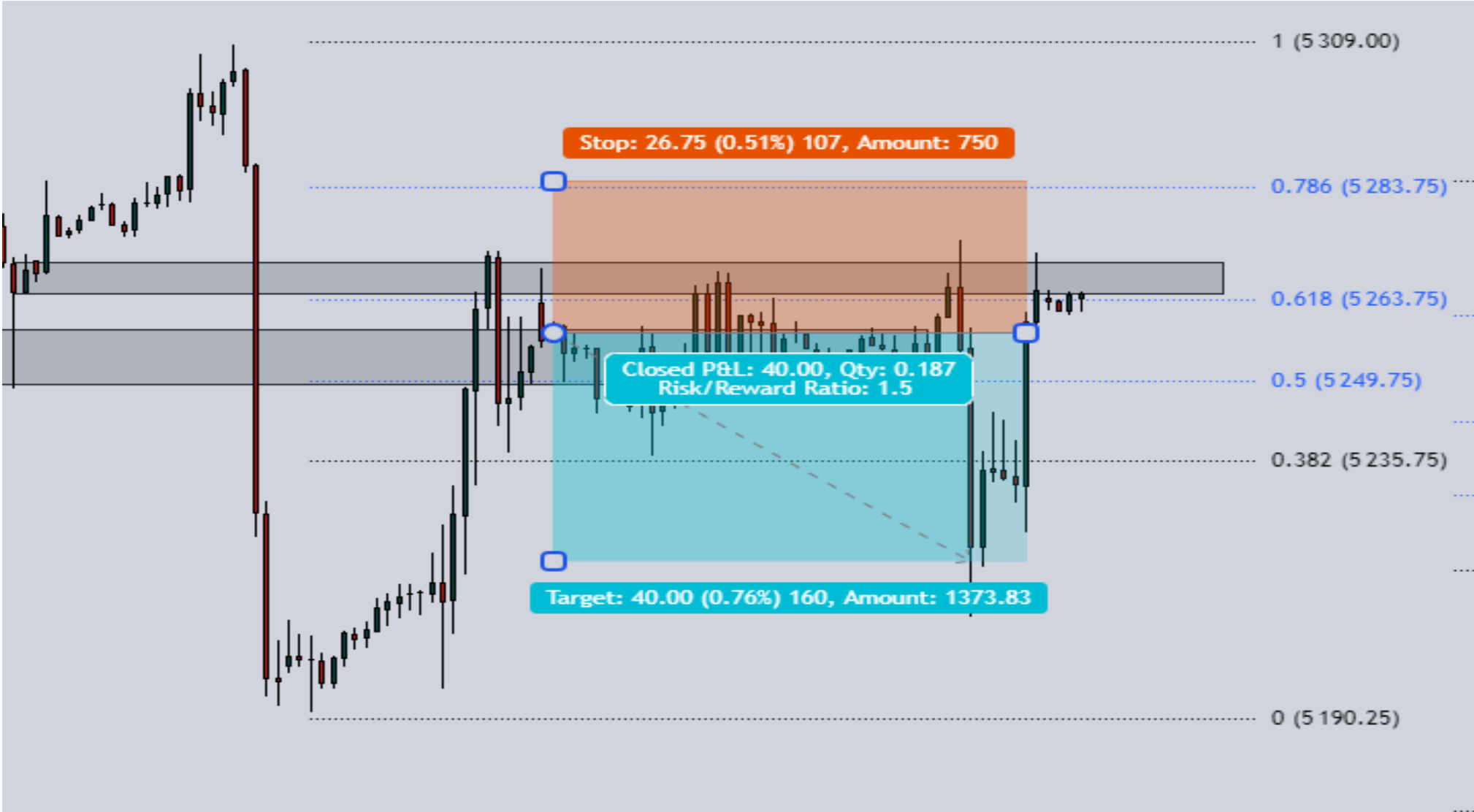
FIBONACCI



FIBONACCI



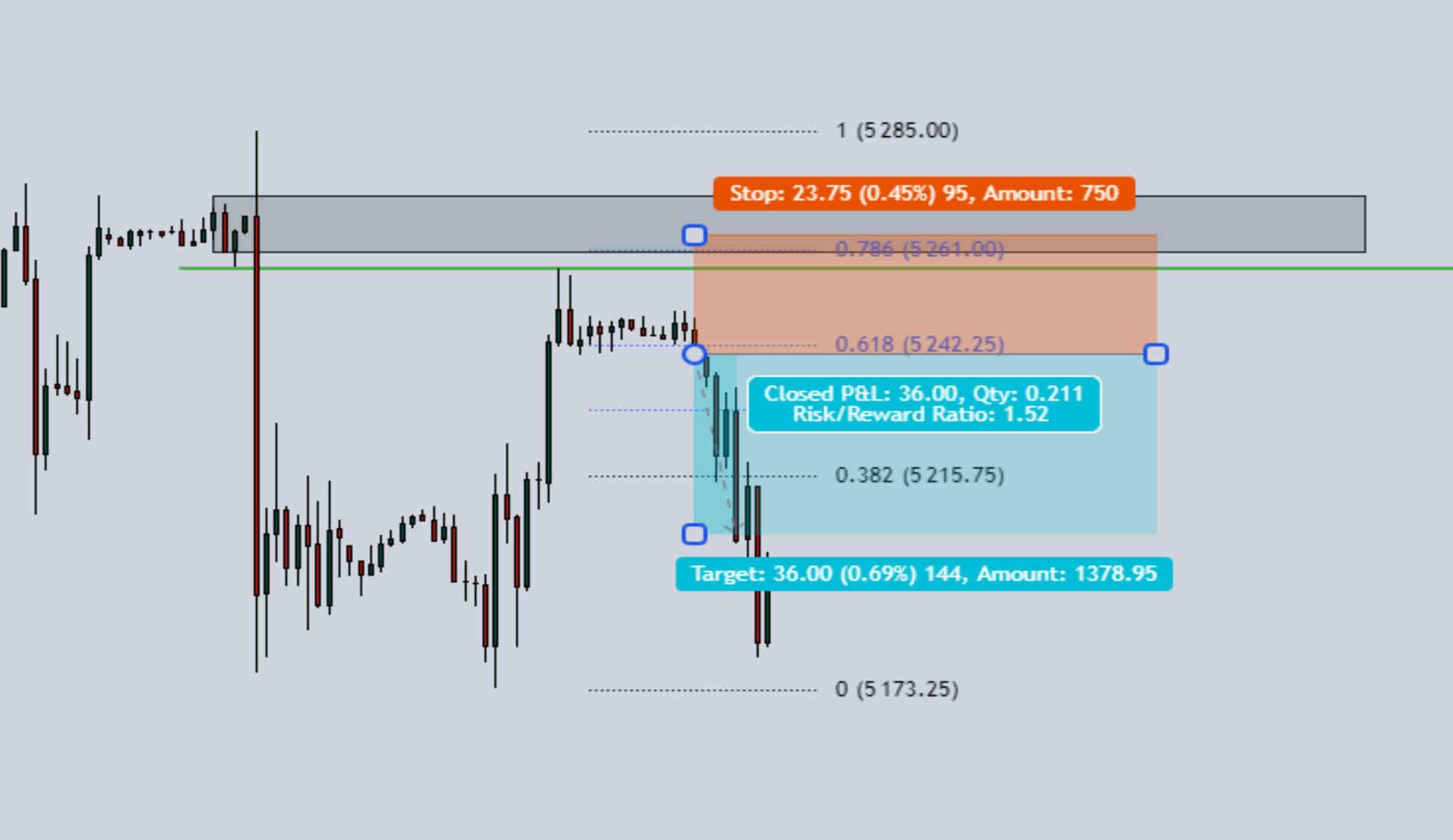
FIBONACCI



FIBONACCI



FIBONACCI



FIBO CONCLUSION

- A system in itself?
- Pick your timeframe
- Map your levels on current / higher timeframe
- Buy at EQ, Discount / Sell at EQ, Premium
- Confluence? Imbalances, Zones, Prior Swing Hi/Los?

TIMEFRAMES (PAE)

- Analysis
- Execution

WTF?

TIMEFRAME - ANALYSIS

SWING

- Monthly / Weekly / Daily / 4H

SWING

- Weekly / Daily / 4H / 1H

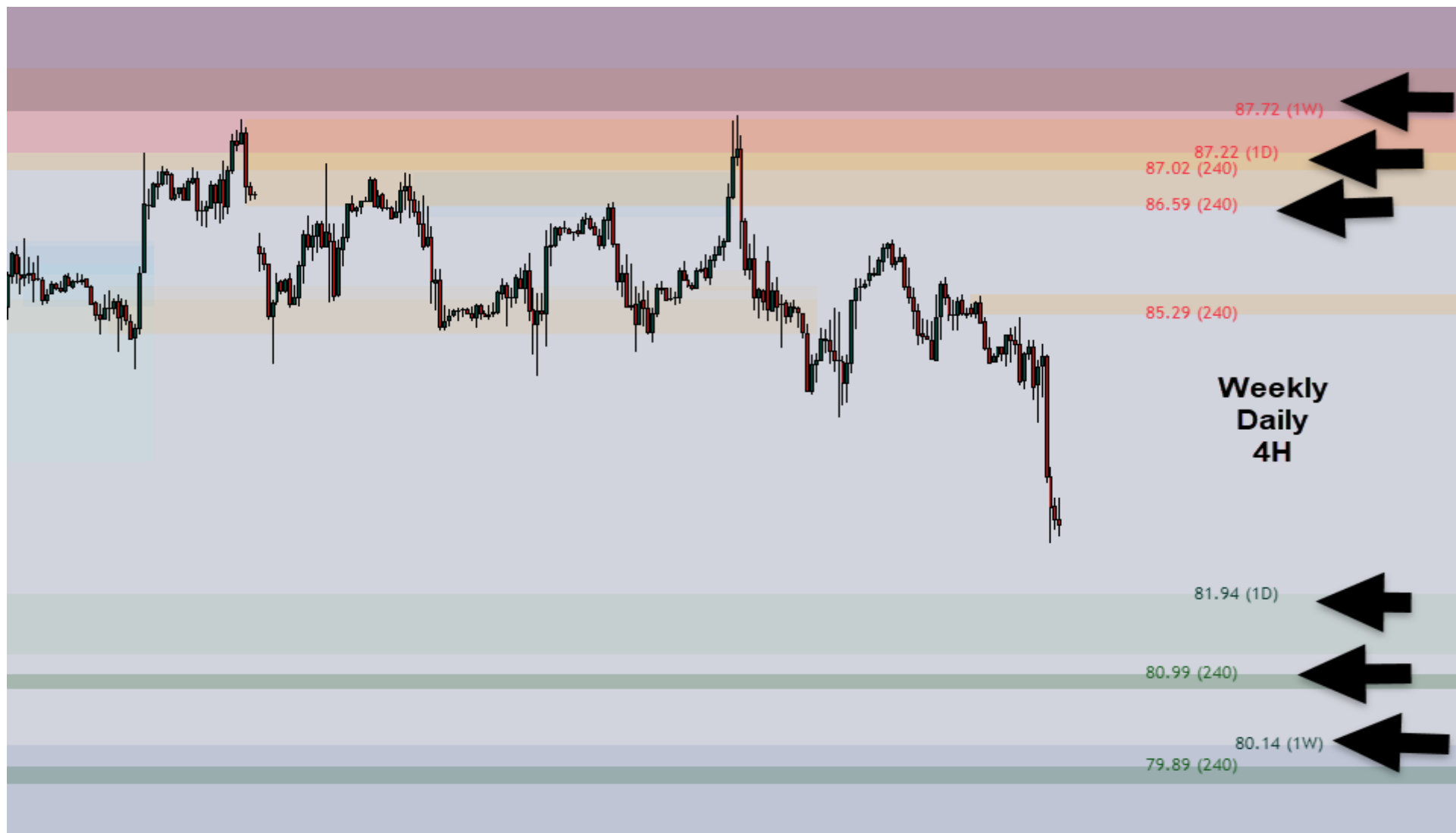
INTRADAY

- Daily / 4H / 1H / 15M...and lower

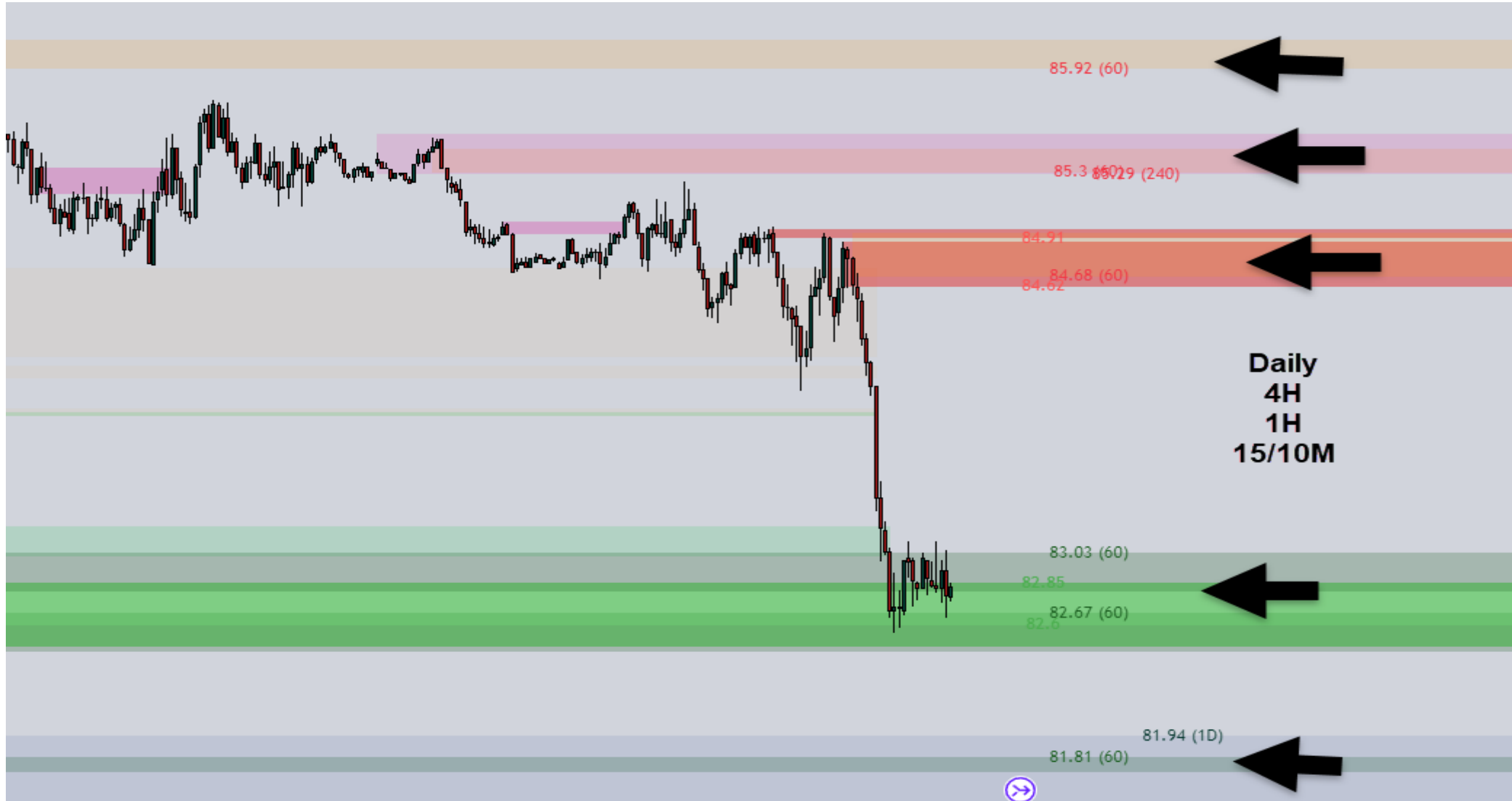
ANALYSIS (Swing/Position)



ANALYSIS (Swing)



ANALYSIS (Intraday)



TIMEFRAME - EXECUTION

SWING

- Daily / 4H / 1H

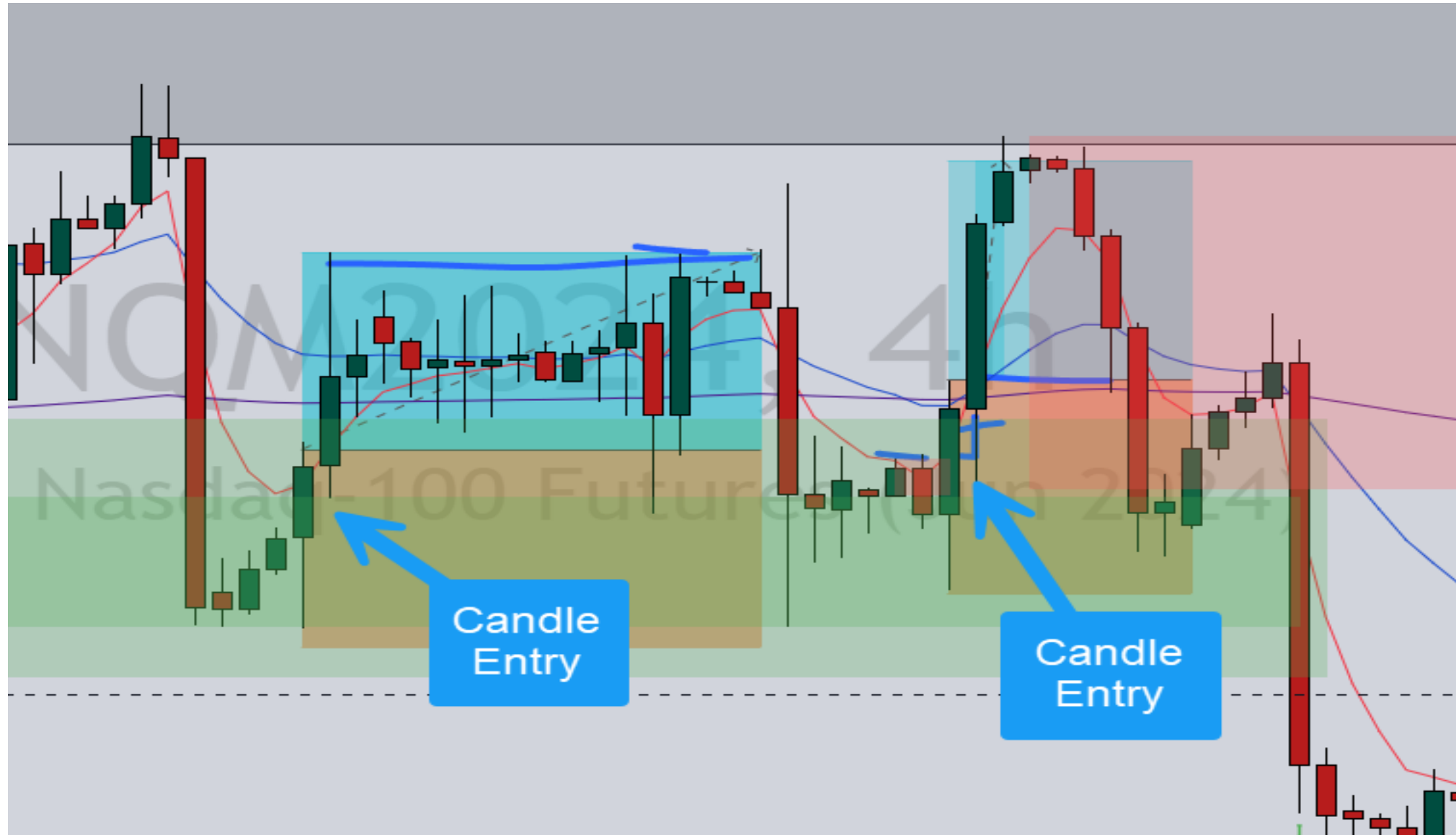
INTRADAY

- 4H / 1H / 15M / 5M / 2M / 1M

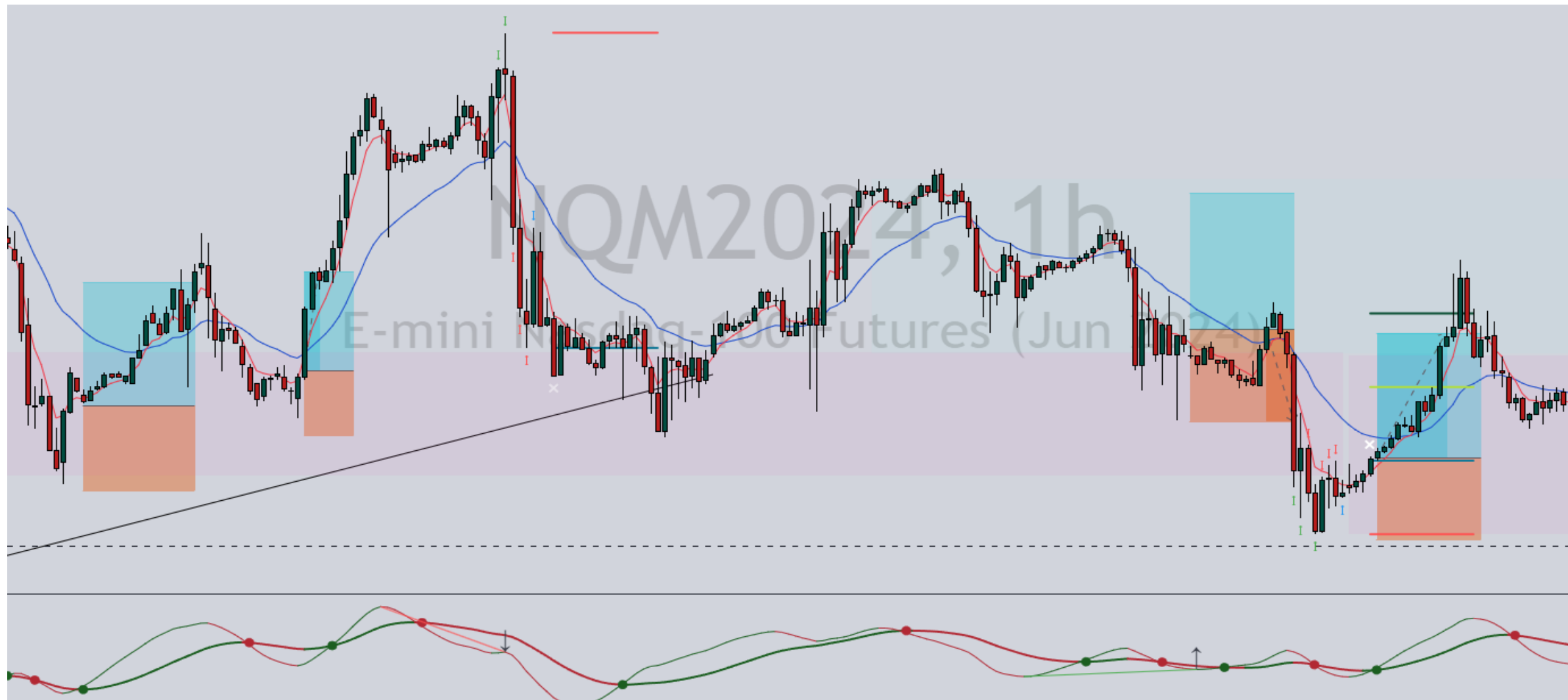
SWING EXECUTION



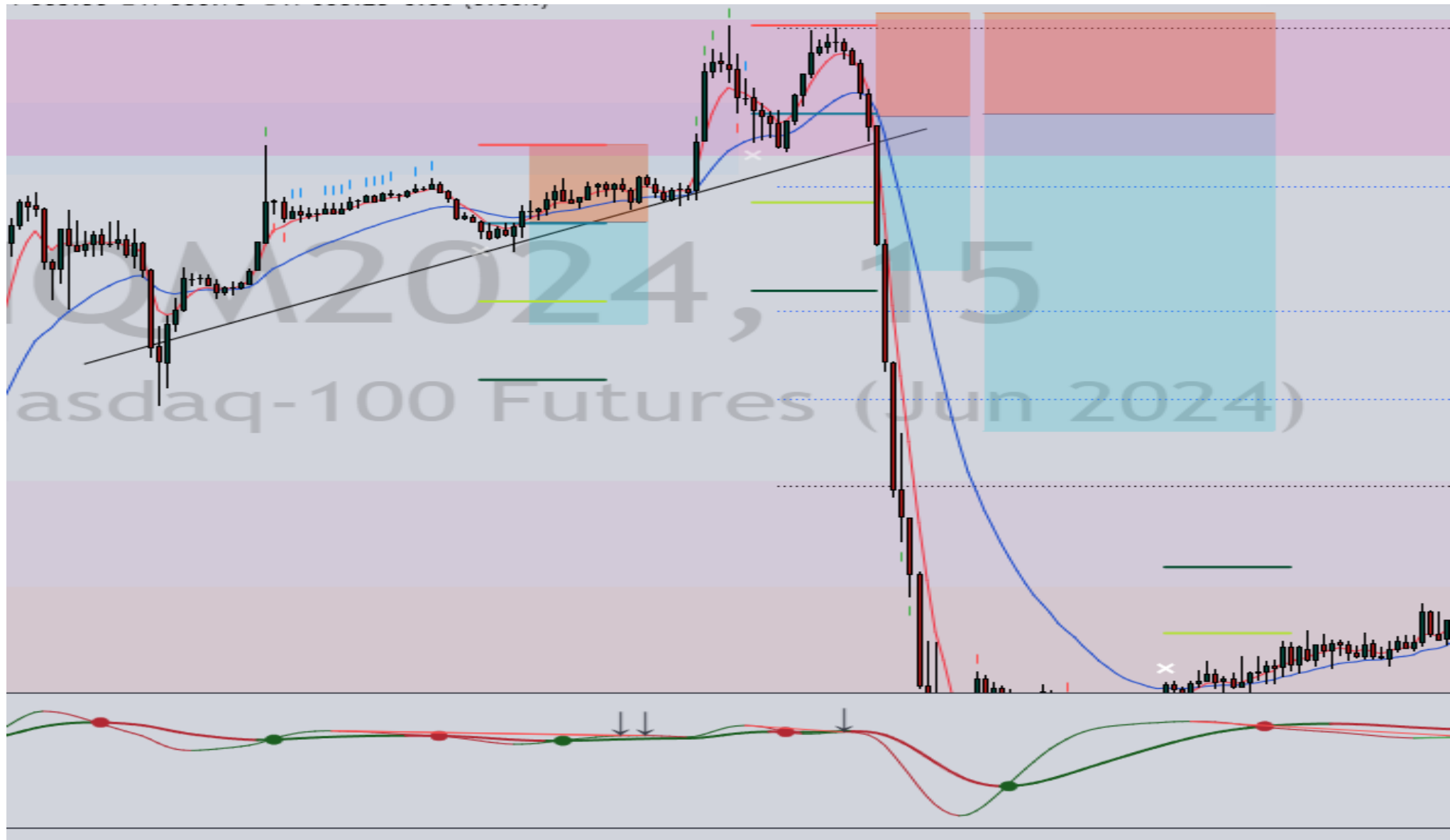
SWING EXECUTION



INTRADAY EXECUTION



INTRADAY EXECUTION



SETUPS

- 3S CODE
- TPI DIVERGENCE
- CANDLESTICK REVERSALS
- FIB RETRACEMENT (IMBALANCE)

BREAKING DOWN A +\$30K MONTH

MONTH	JANUARY
TIMEFRAME	4H

ALL TRADES	20
WINS	12
LOSSES	4
BREAKEVEN	4
WIN %	60%
\$ P/L	\$ 36,194

*2 CONTRACT BASIS

STATS: INDICES + CRUDE

INDICES

WINS

LOSSES

BREAKEVEN

WIN %

\$ P/L

3

2

0

1

67%

\$ 9,600

CRUDE

WINS

LOSSES

BREAKEVEN

WIN %

\$ P/L

4

3

1

0

75%

\$ 14,750

*2 CONTRACT BASIS

STATS: GOLD + BONDS

GOLD		3	BONDS		2
WINS		2	WINS		1
LOSSES		0	LOSSES		1
BREAKEVEN		1	BREAKEVEN		0
WIN %		67%	WIN %		50%
\$ P/L	\$	4,200	\$ P/L	\$	1,438

*2 CONTRACT BASIS

STATS: CURRENCIES

CURRENCIES	8
WINS	4
LOSSES	2
BREAKEVEN	2
WIN %	50%
\$ P/L	\$ 6,206

*2 CONTRACT BASIS

STATS: 3S CODE + TPI

3S CODE SIGNALS	7	TPI SIGNALS	7
WINS	5	WINS	4
LOSSES	1	LOSSES	1
BREAKEVEN	1	BREAKEVEN	2
WIN %	71%	WIN %	57%
\$ P/L	\$ 14,538	\$ P/L	\$ 12,019

*2 CONTRACT BASIS

STATS: 3S CODE + TPI COMBO

3S/TPI COMBO	6
WINS	3
LOSSES	2
BREAKEVEN	1
WIN %	50%
\$ P/L	\$ 9,638

*2 CONTRACT BASIS

STATS: 1 LOT ONLY (CONTRACT)

1 LOT ONLY	20
WINS	12
LOSSES	4
BREAKEVEN	4
WIN %	60%
\$ P/L	\$ 22,738

*1 CONTRACT BASIS

STATS: 1R:1R TARGET ONLY

1:1 TGT ONLY	20
WINS	17
LOSSES	3
BREAKEVEN	0
WIN %	85%
\$ P/L	\$ 23,024

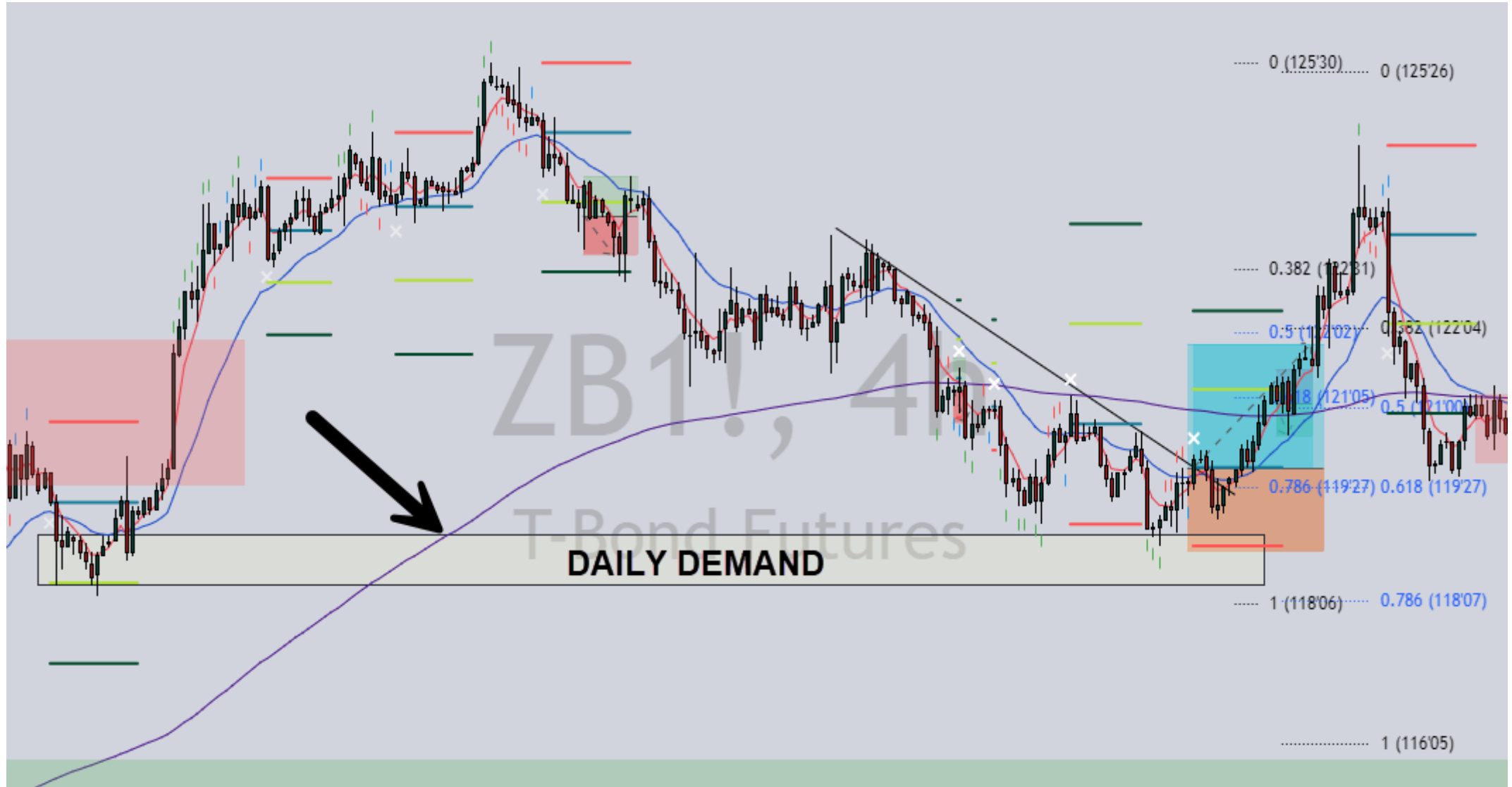
*1 CONTRACT BASIS

GRADING THE TRADE: A+

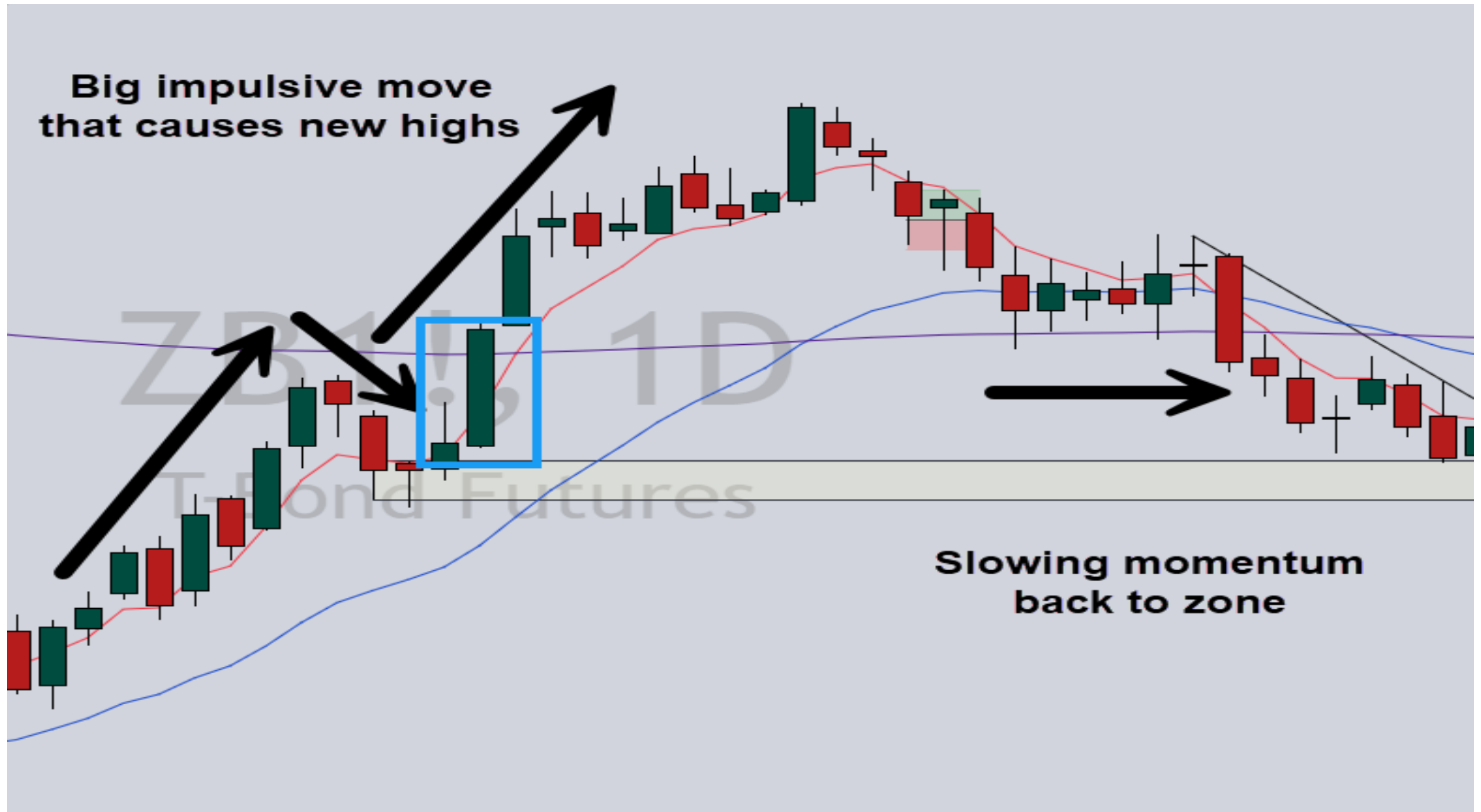
A+ Trade Setup

- TITAN LEVELS
- 3S CODE Signals
- TPI DIVERGENCE SIGNALS
- FIBONACCI CONFLUENCE
- CANDLE CONFLUENCE
- IMBALANCE
- LIQUIDITY SWEEPS
- SEASONALITY / COT
- MOVING AVERAGES
- LARGER TREND

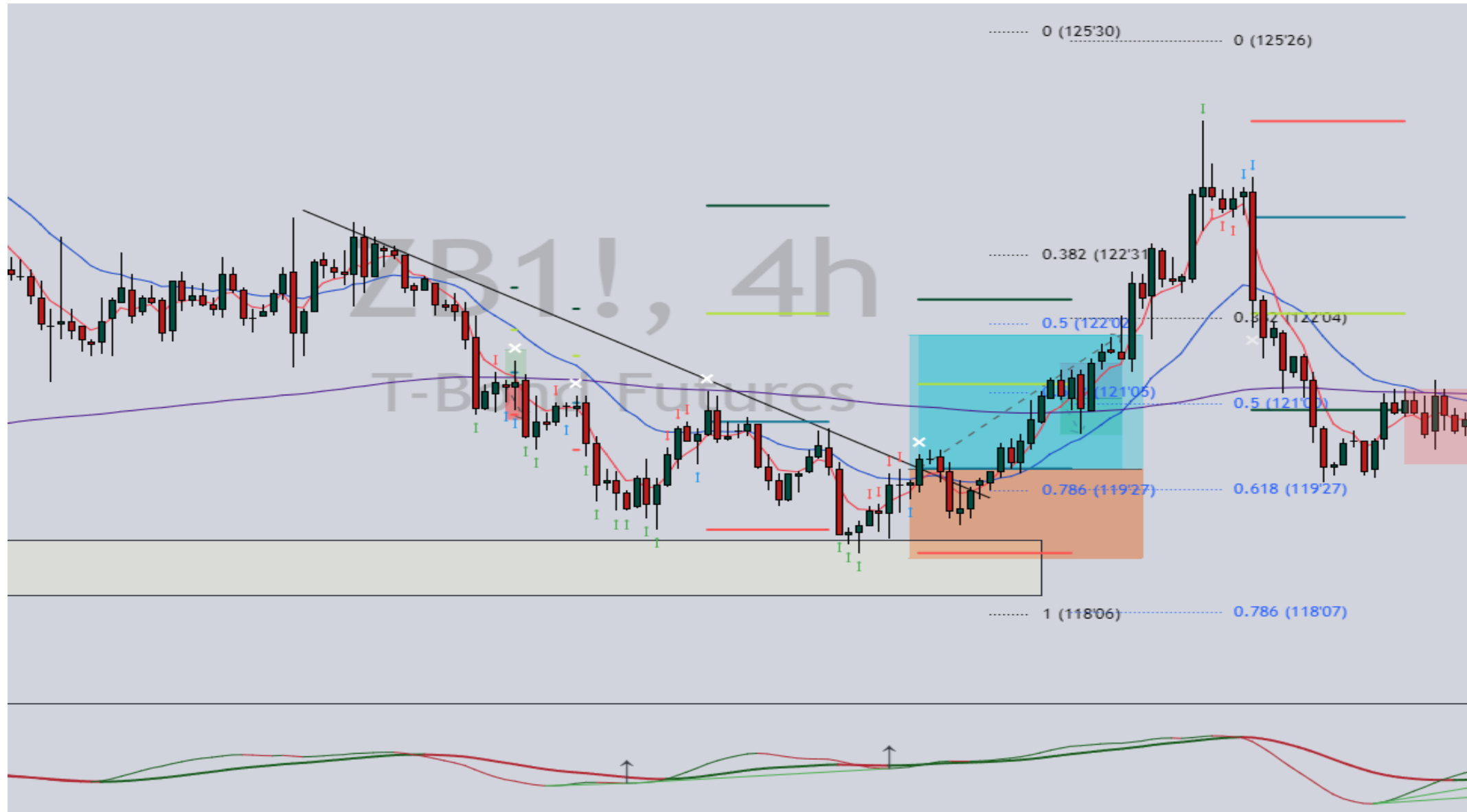
A+ SETUP



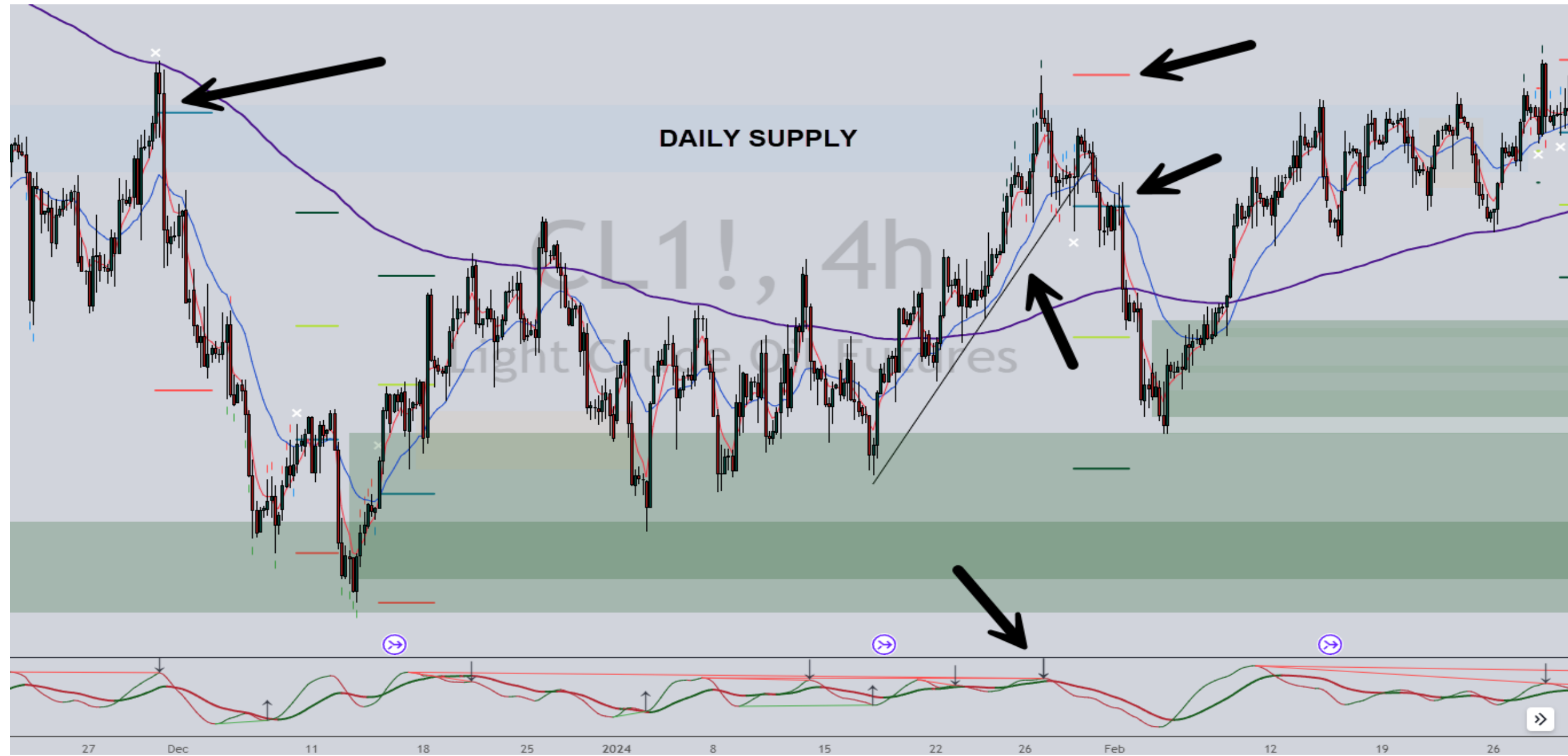
A+ SETUP



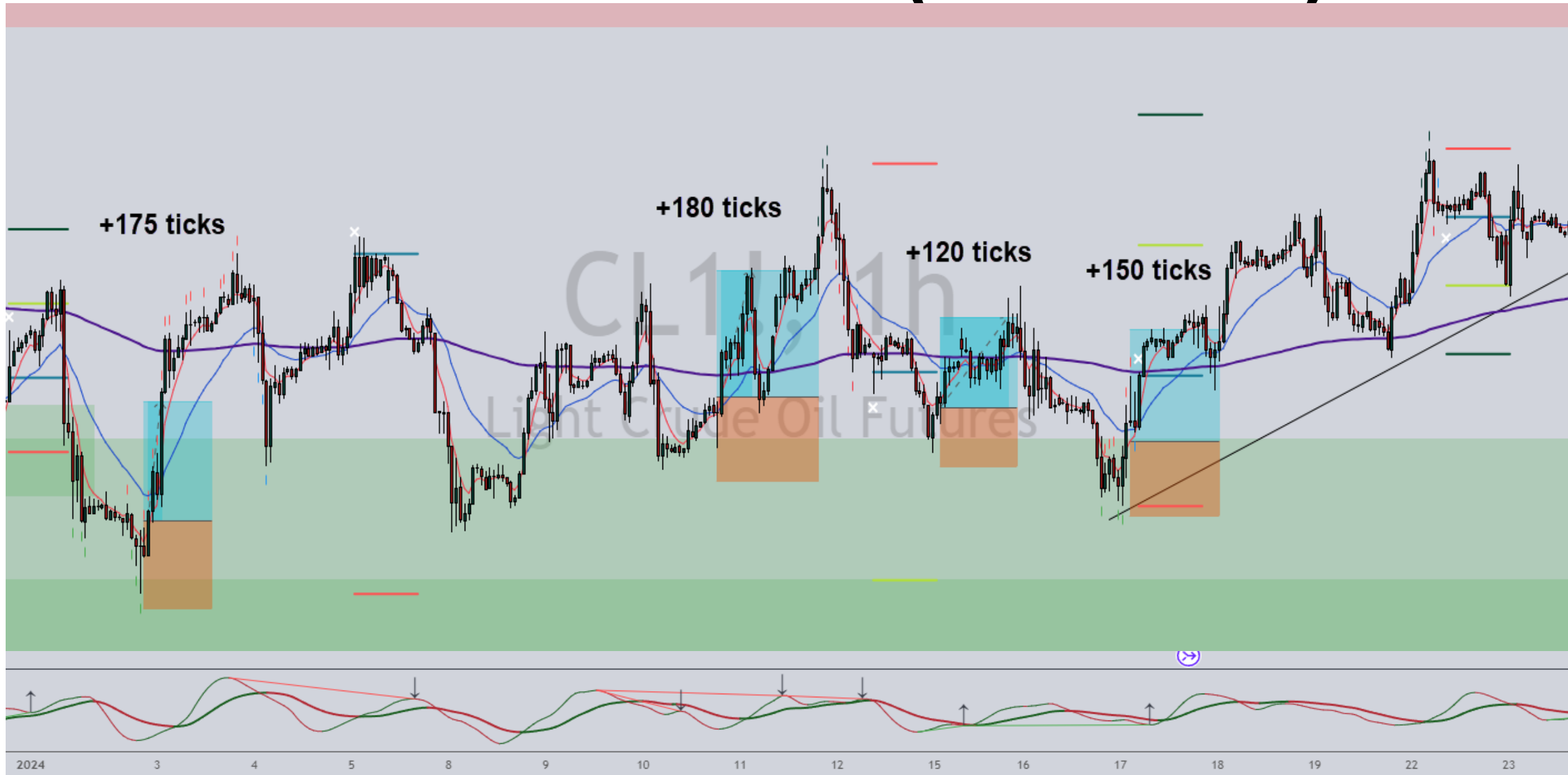
A+ SETUP



A+ SETUP



BONUS SETUPS (1H CHART)

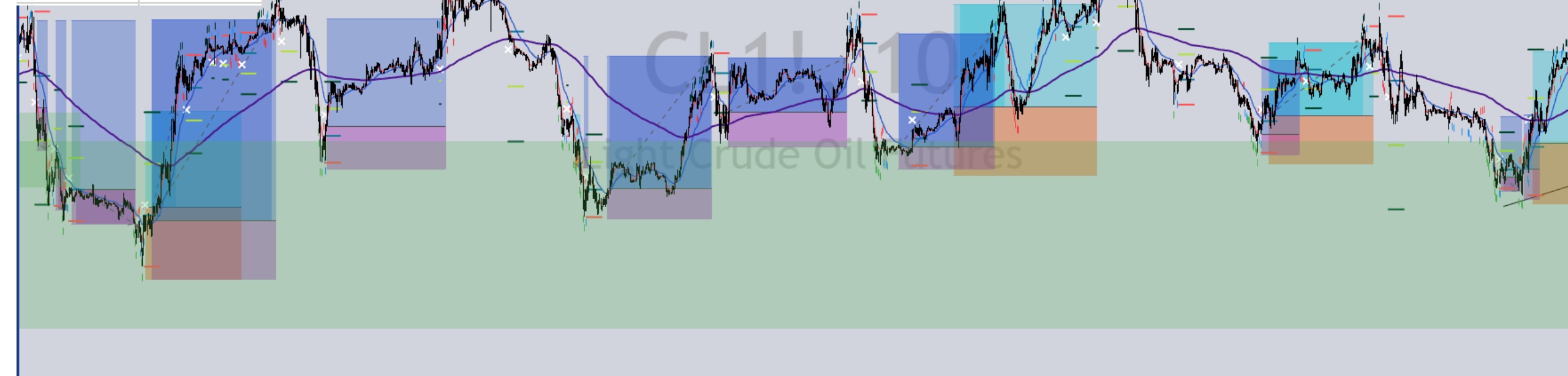


BONUS SETUPS (10M CHART)

Trade 1	-1
Trade 2	-1
Trade 3	-1
Trade 4	3.4
Trade 5	2.5
Trade 6	4.4
Trade 7	-1
Trade 8	1.5
Trade 9	5.1
Trade 10	3.6
Trade 11	-1
Trade 12	1.82
	17.32

12 TRADES

+17.32R

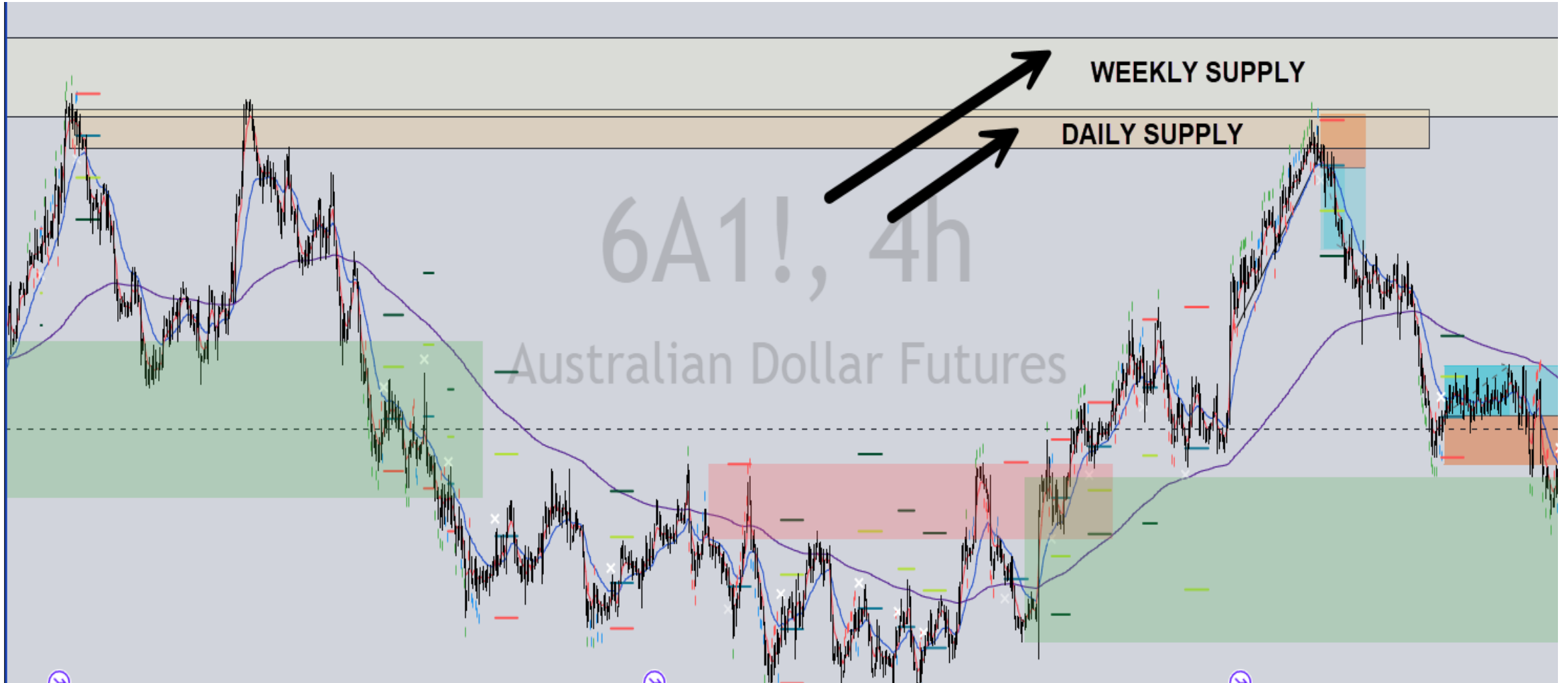


GRADING THE TRADE: A

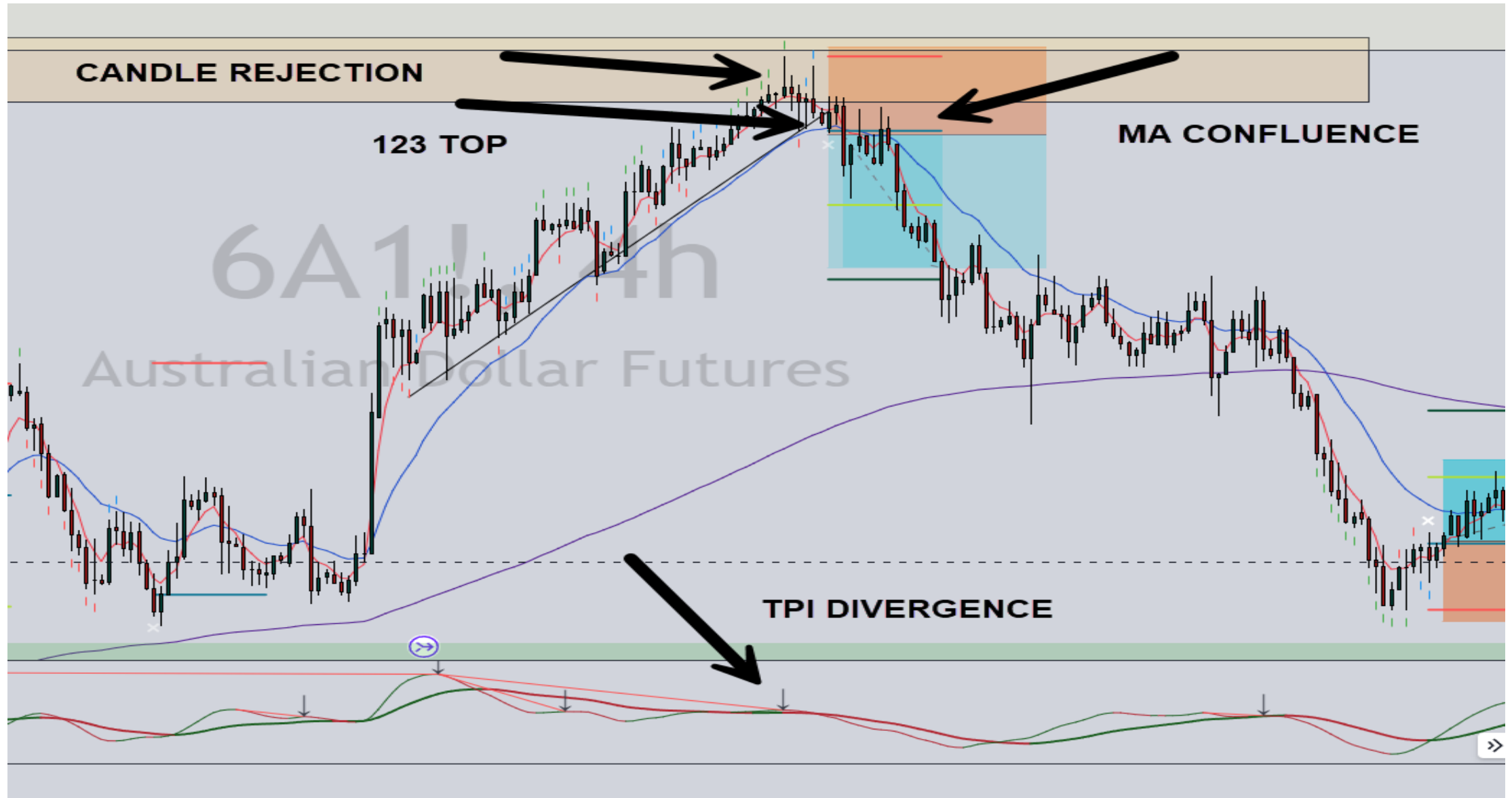
A Trade Setup

- TITAN LEVELS
- 3S CODE Signals
- TPI DIVERGENCE SIGNALS
- FIBONACCI CONFLUENCE
- CANDLE CONFLUENCE
- IMBALANCE
- LIQUIDITY SWEEPS
- SEASONALITY / COT
- MOVING AVERAGES
- LARGER TREND

A SETUP



A SETUP

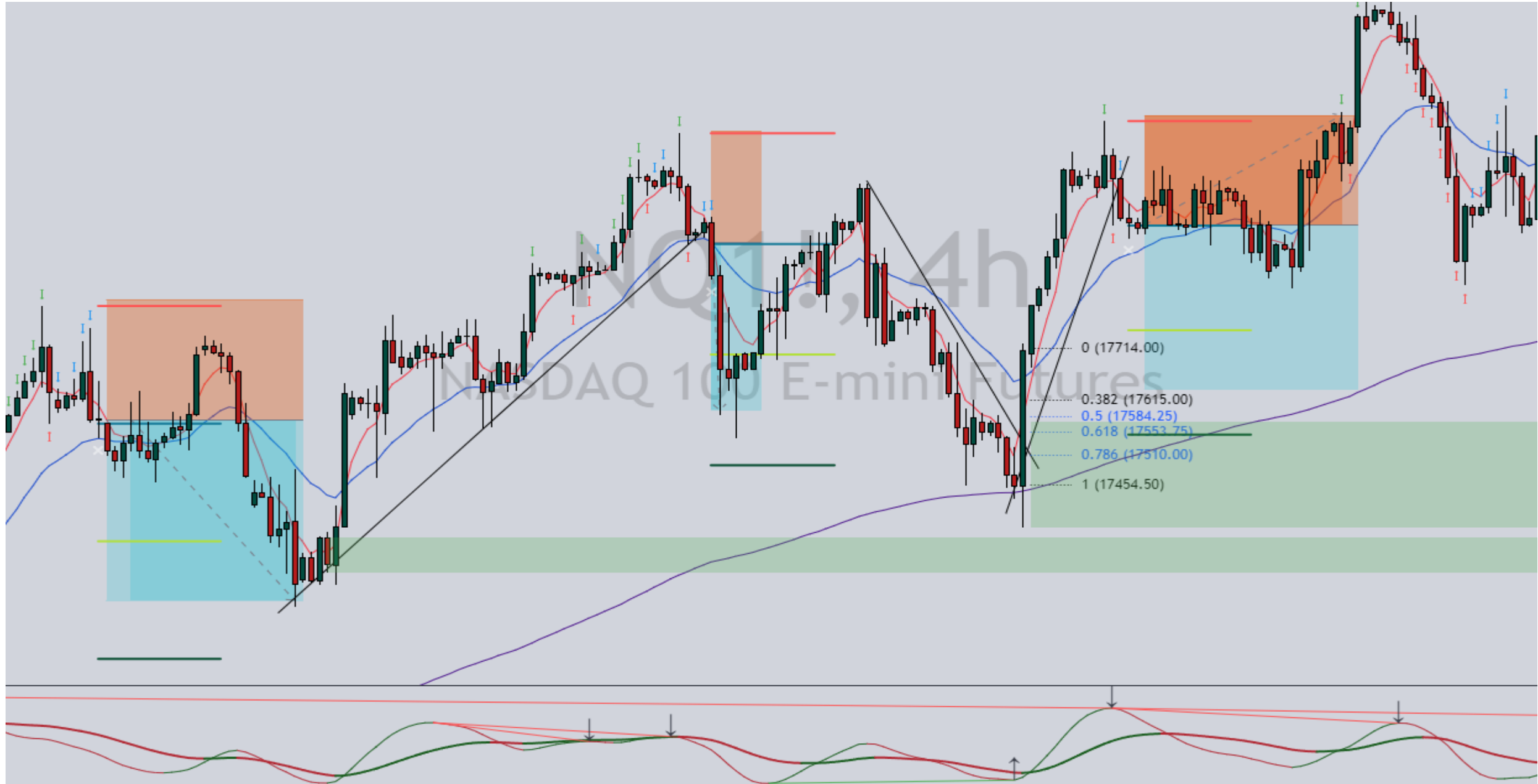


GRADING THE TRADE: B

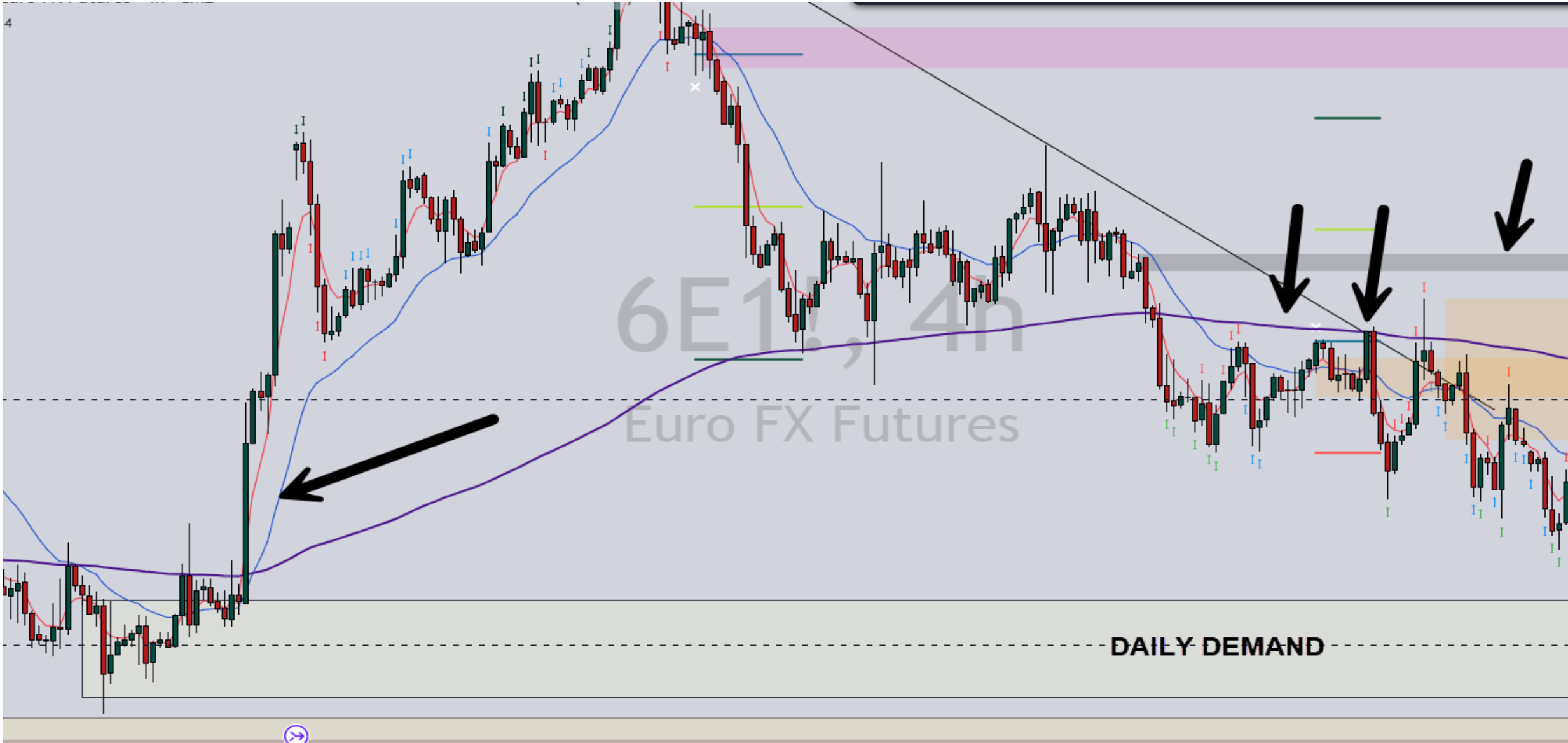
B Trade Setup

- TITAN LEVELS
- 3S CODE Signals
- TPI DIVERGENCE SIGNALS
- FIBONACCI CONFLUENCE
- CANDLE CONFLUENCE
- IMBALANCE
- LIQUIDITY SWEEPS
- SEASONALITY
- MOVING AVERAGES
- LARGER TREND

B SETUP



B- SETUP



GRADING THE TRADE

A+: 7/8 of 10

A: 5/6 of 10

B: 2/3 of 10 (or no TITAN LEVELS)

C: STAY AWAY

CAN YOU DO THIS?

IT'S
Miller
TIME