

INSIDER MASTERMIND

May 2024 – ORLANDO, FL

Silas Peters

TRADES
TRENDING

RISK DISCLAIMER

IMPORTANT NOTICE: No representation is being made that the use of this strategy or any system or trading methodology will generate profits. Past performance is not necessarily indicative of future results. There is substantial risk of loss associated with trading securities and options on equities. Only risk capital should be used to trade. Trading stocks, options, futures, forex, and securities are not suitable for everyone. Disclaimer: Futures, Options, Securities and Currency trading all have large potential rewards, but they also have large potential risk. You must be aware of the risks and be willing to accept them in order to invest in these markets. Don't trade with money you can't afford to lose. This website is neither a solicitation nor an offer to Buy/Sell futures, options, stocks, or currencies. No representation is being made that any account will or is likely to achieve profits or losses similar to those discussed on this web site. The past performance of any trading system or methodology is not necessarily indicative of future results.

CFTC RULE 4.41 – HYPOTHETICAL OR SIMULATED PERFORMANCE RESULTS HAVE CERTAIN LIMITATIONS. UNLIKE AN ACTUAL PERFORMANCE RECORD, SIMULATED RESULTS DO NOT REPRESENT ACTUAL TRADING. ALSO, SINCE THE TRADES HAVE NOT BEEN EXECUTED, THE RESULTS MAY HAVE UNDER-OR-OVER COMPENSATED FOR THE IMPACT, IF ANY, OF CERTAIN MARKET FACTORS, SUCH AS LACK OF LIQUIDITY. SIMULATED TRADING PROGRAMS IN GENERAL ARE ALSO SUBJECT TO THE FACT THAT THEY ARE DESIGNED WITH THE BENEFIT OF HINDSIGHT. NO REPRESENTATION IS BEING MADE THAT ANY ACCOUNT WILL OR IS LIKELY TO ACHIEVE PROFIT OR LOSSES SIMILAR TO THOSE SHOWN.

BLACK GOLD GUSHER (BGG)

- Chart Setup / Layout



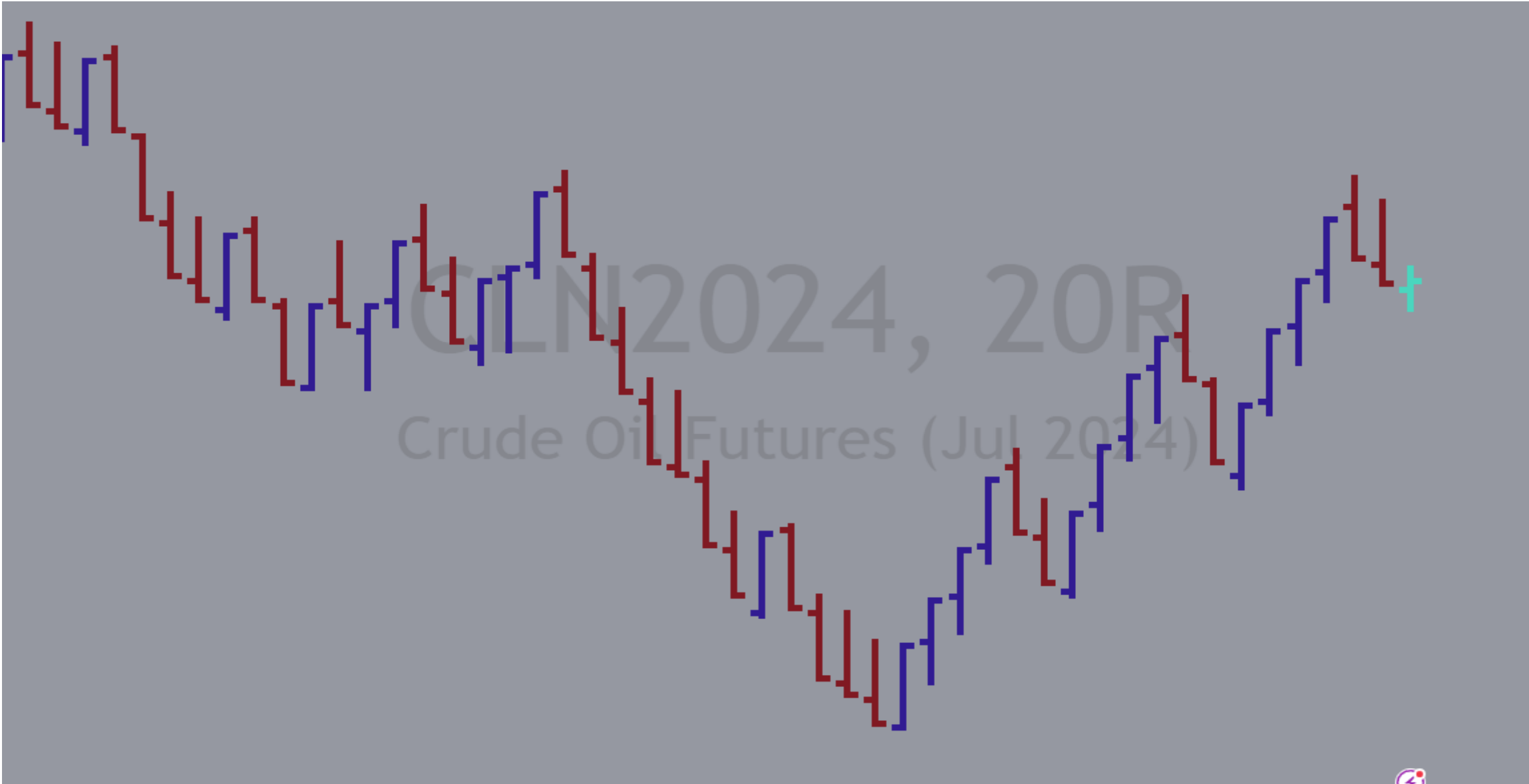
CHART SETUP / LAYOUT

- 20T RANGE CHART
- 5EMA ; 21EMA ; 21WMA
- TITAN LEVELS
- TPI DIVERGRENCE

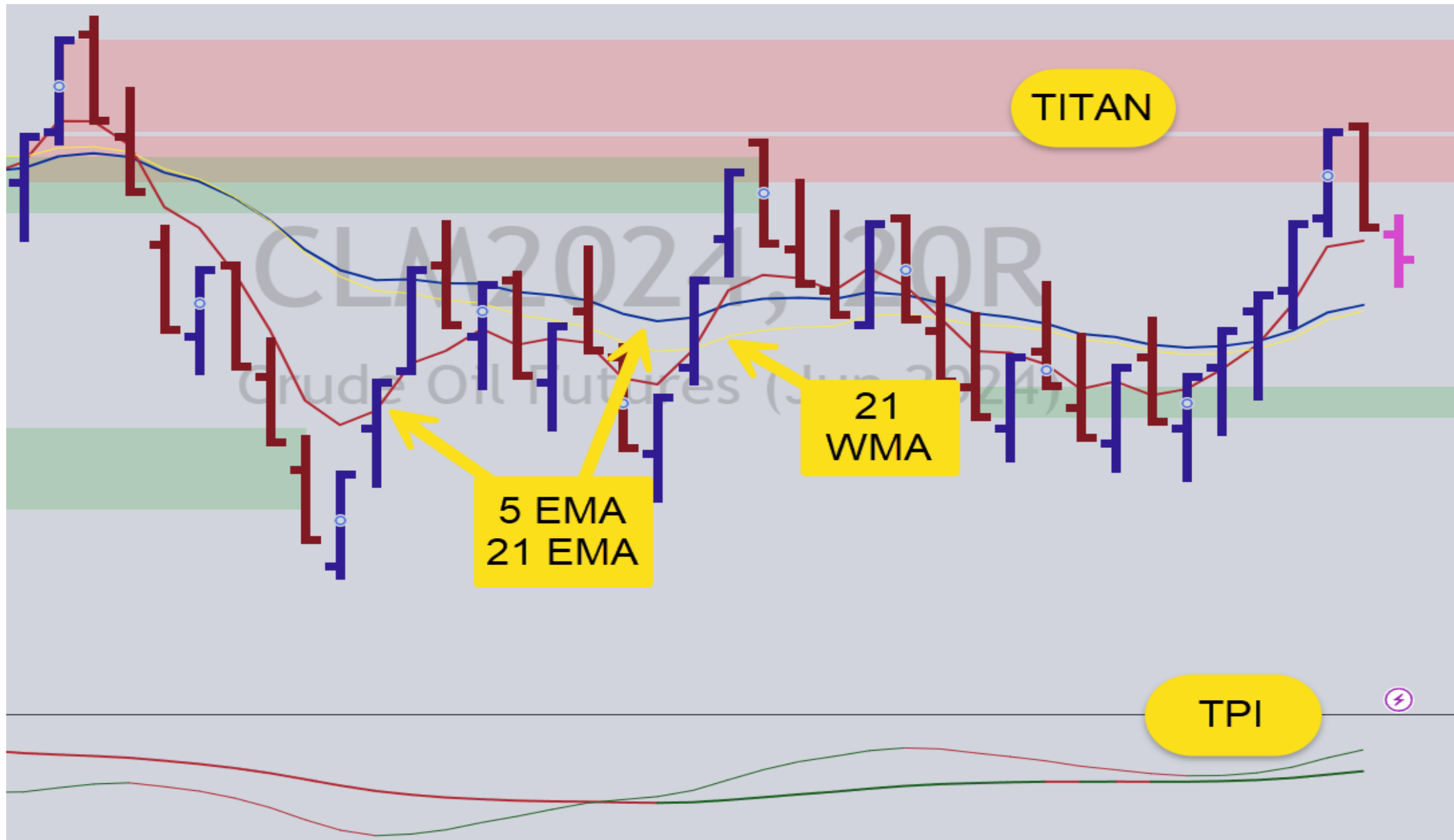
RANGE BAR

- EACH BAR IS 20 TICKS or 20 CENTS
- 20 CENTS = \$200 (Standard or 'CL')
- 20 CENTS = \$100 (Mini or 'QM')
- 20 CENTS = \$20 (Micro or 'MCL')

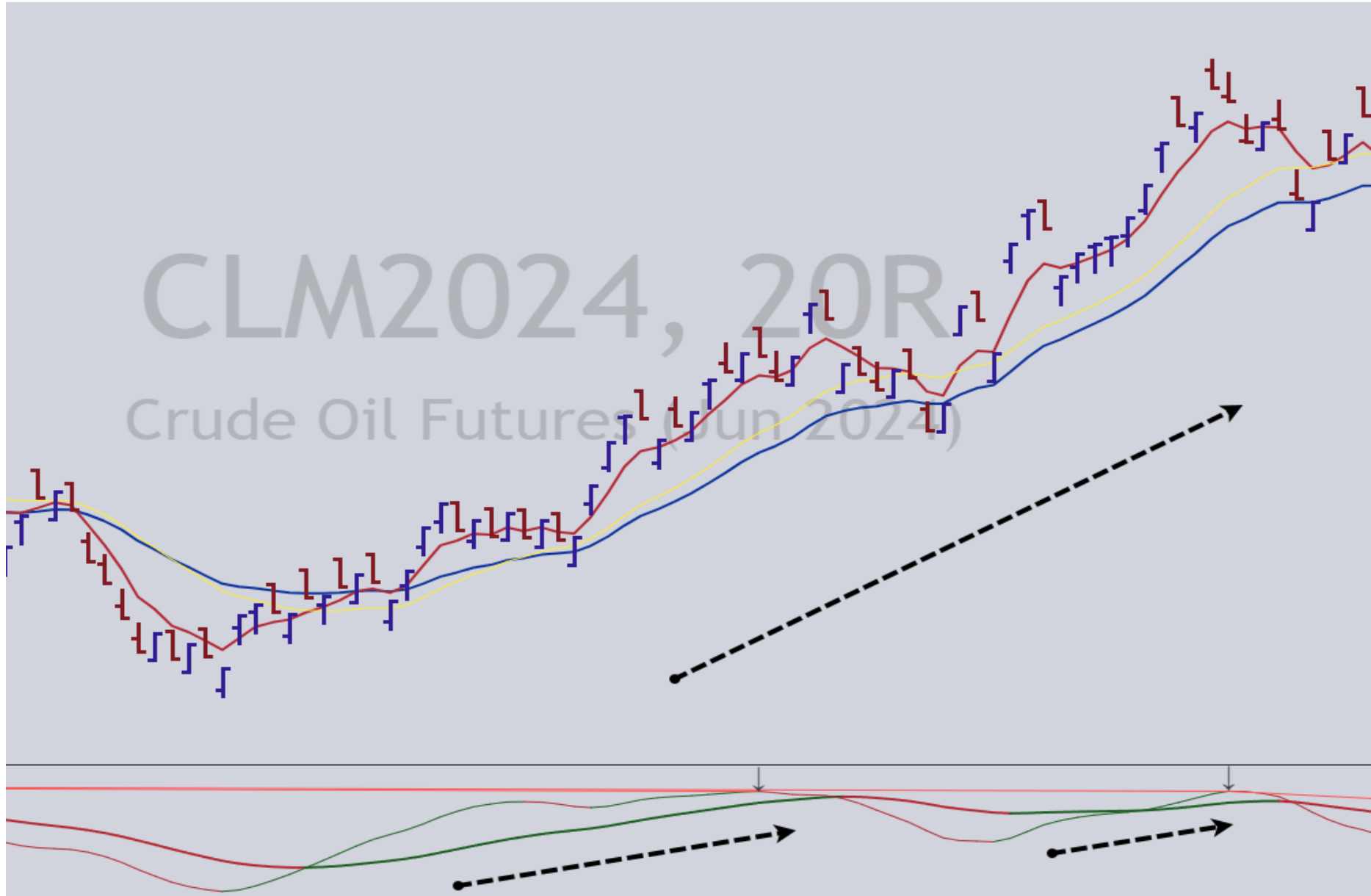
CRUDE OIL



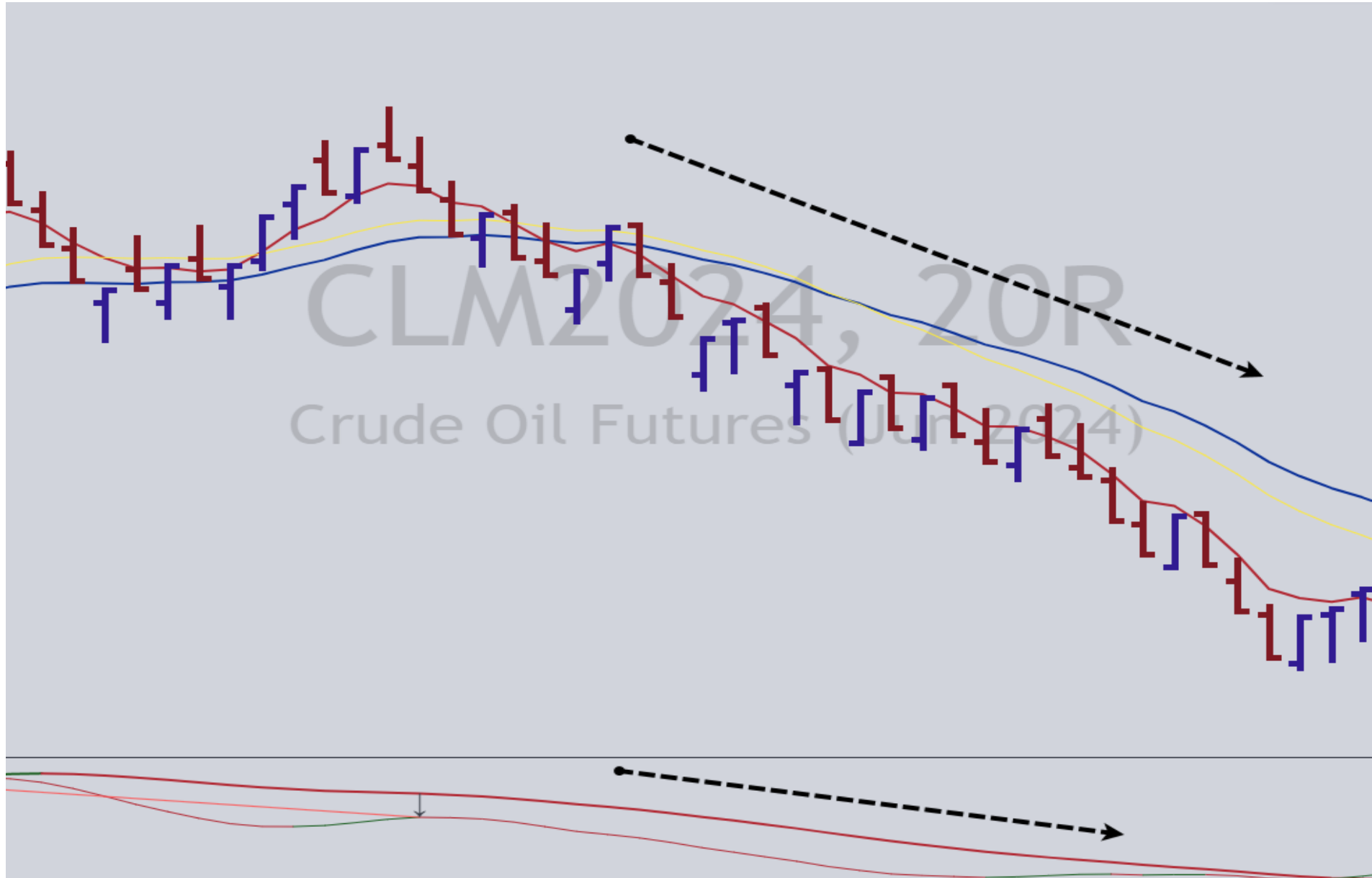
CRUDE OIL



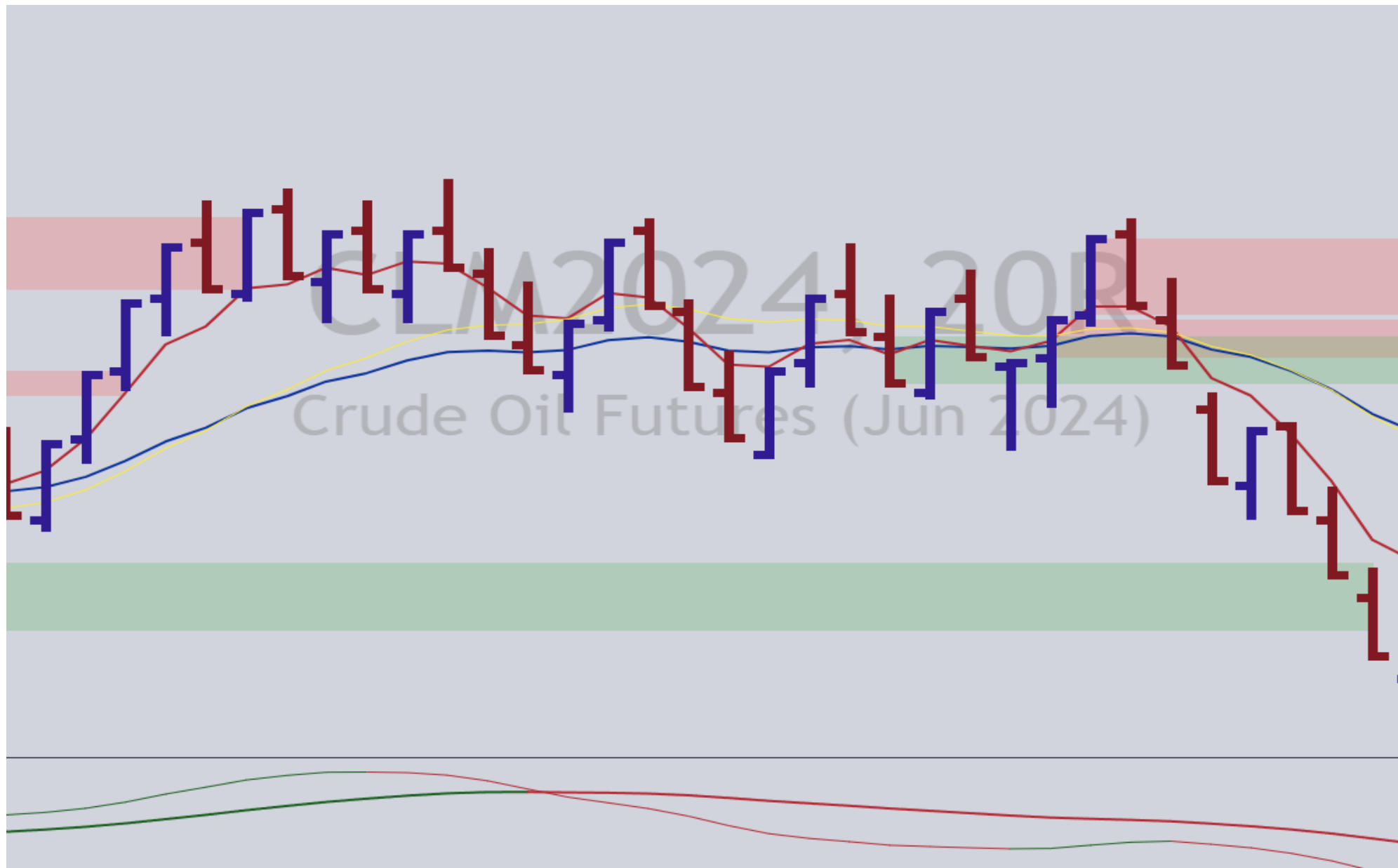
UPTREND



DOWNTREND



SIDEWAYS / CHOPPY



CRUDE OIL

- Crude Oil (CL): \$10 / \$1000
- Mini Crude (QM): \$12.5 / \$50
- Micro Crude (MCL): \$1 / \$10

STATS

Month	Jan	Feb	Mar	Apr	AVG
\$ P/L	\$ 13,850	\$ 1,450	\$ 4,240	\$ 4,950	\$ 6,123
Trades	42	47	28	43	40
Wins	32	32	18	28	27.5
Win Rate	76%	68%	64%	65%	68%

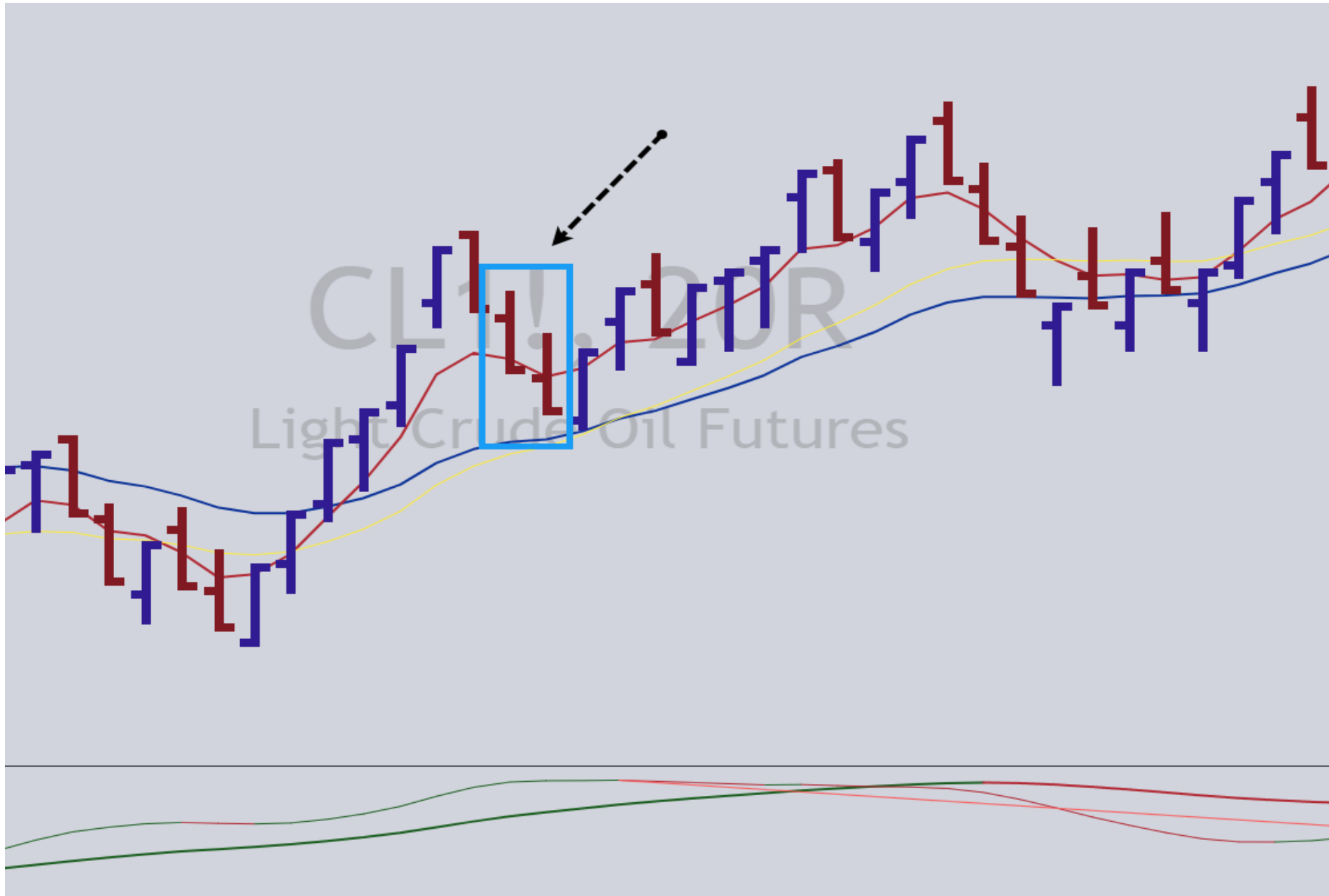
RULES: A+ Buy

- Price is trending higher
- Price is above MA's / sloping higher
- TPI Momentum positive / sloping higher

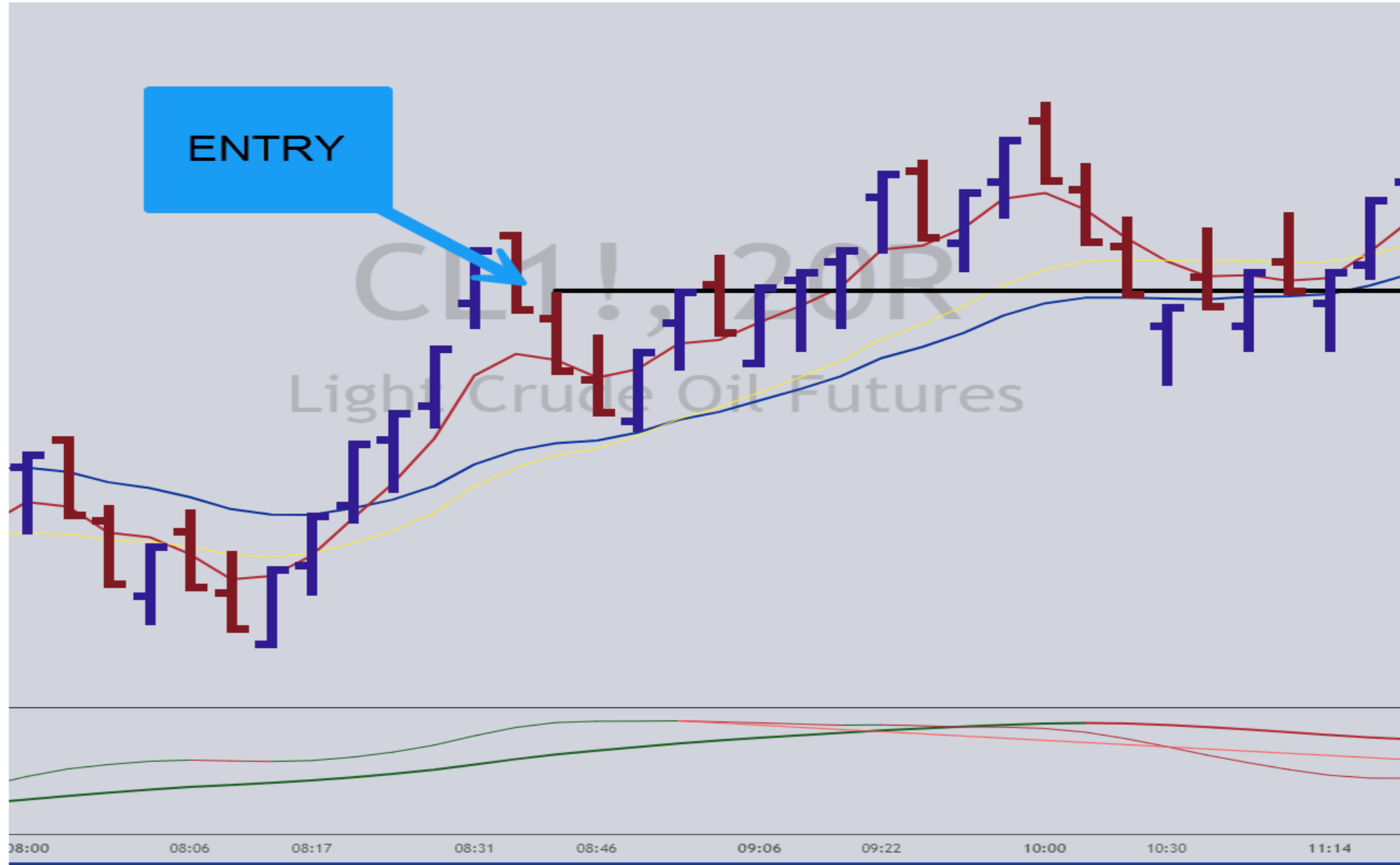
A+ Buy



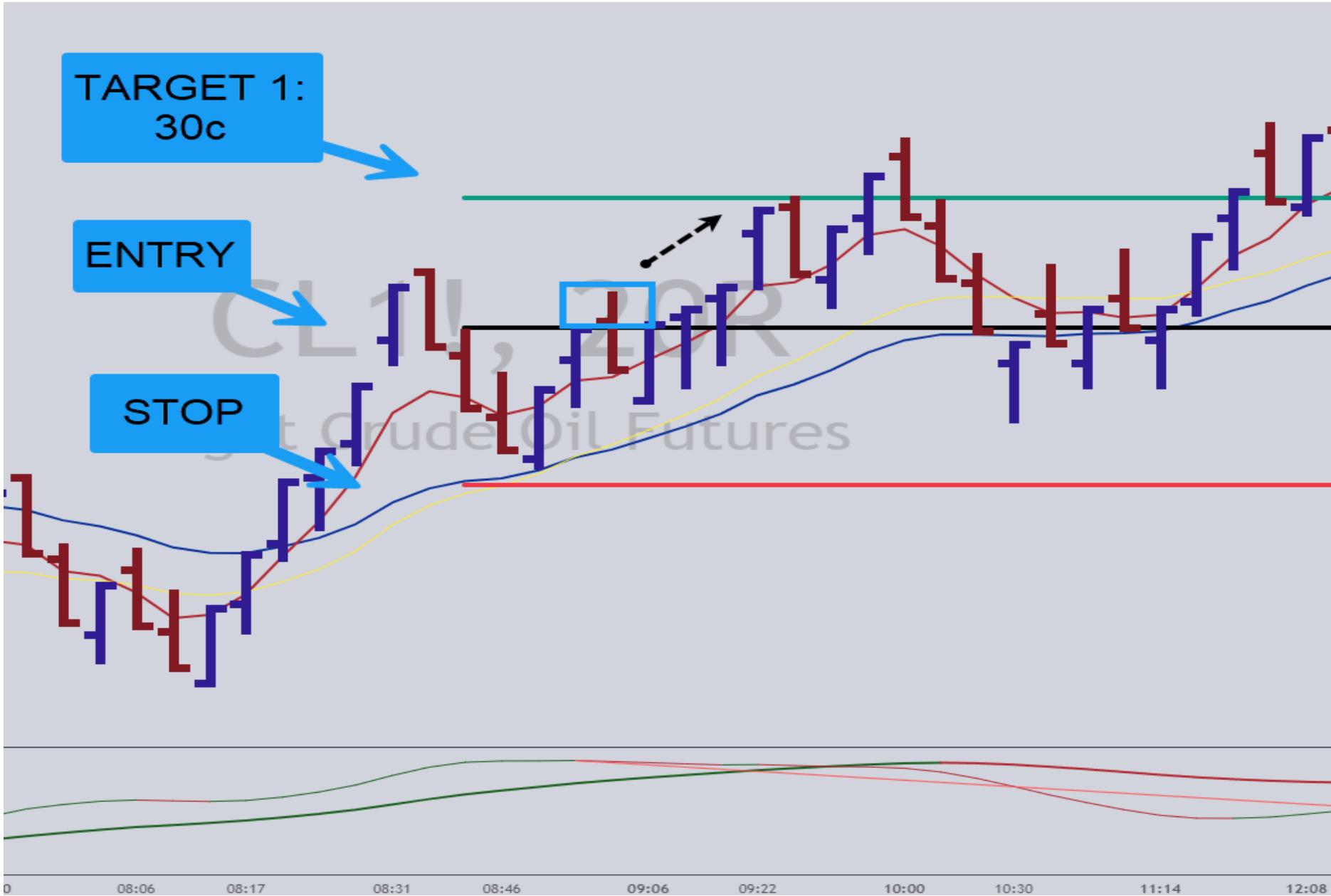
A+ Buy



A+ Buy *ENTRY*

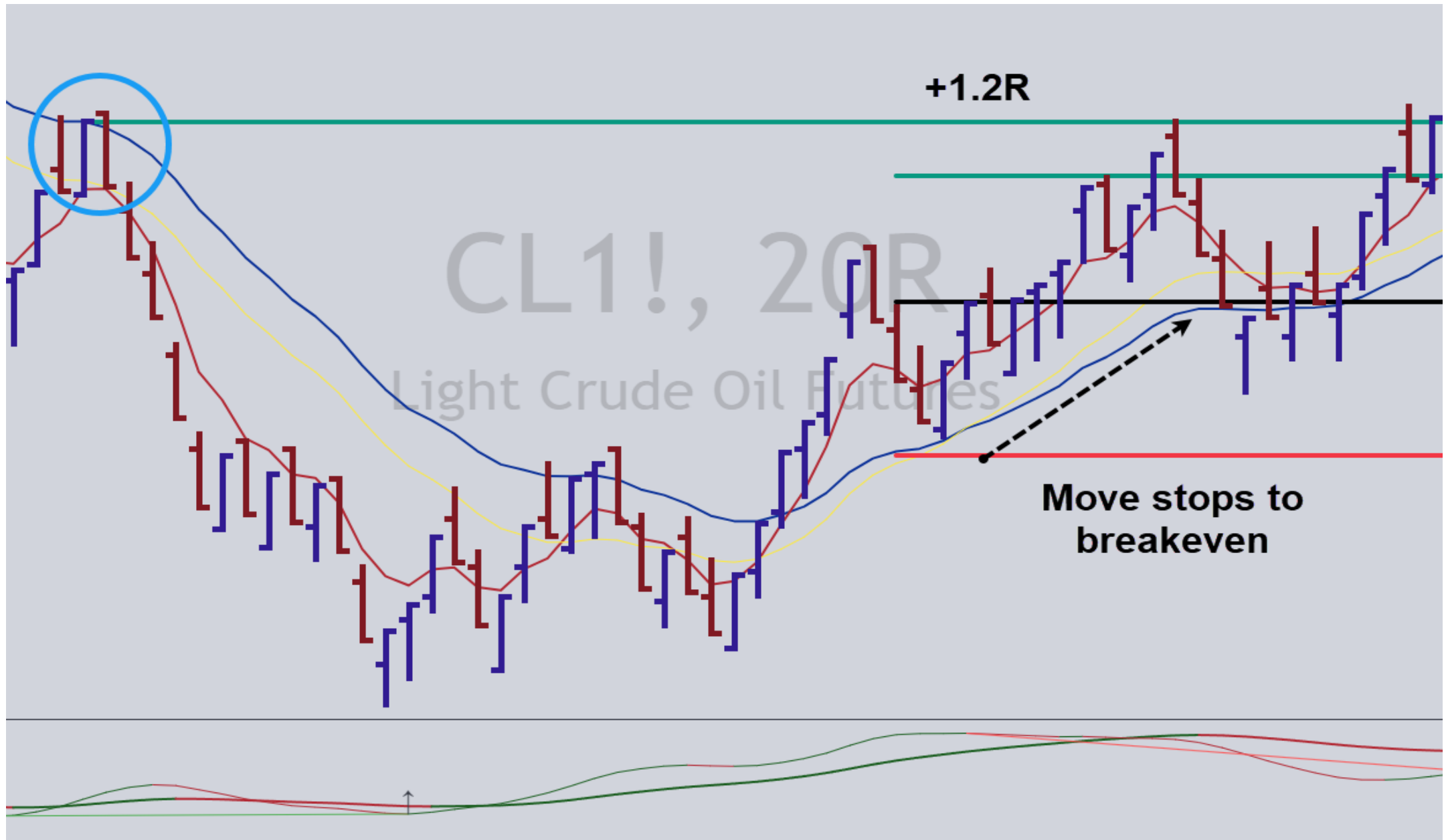


EXITS

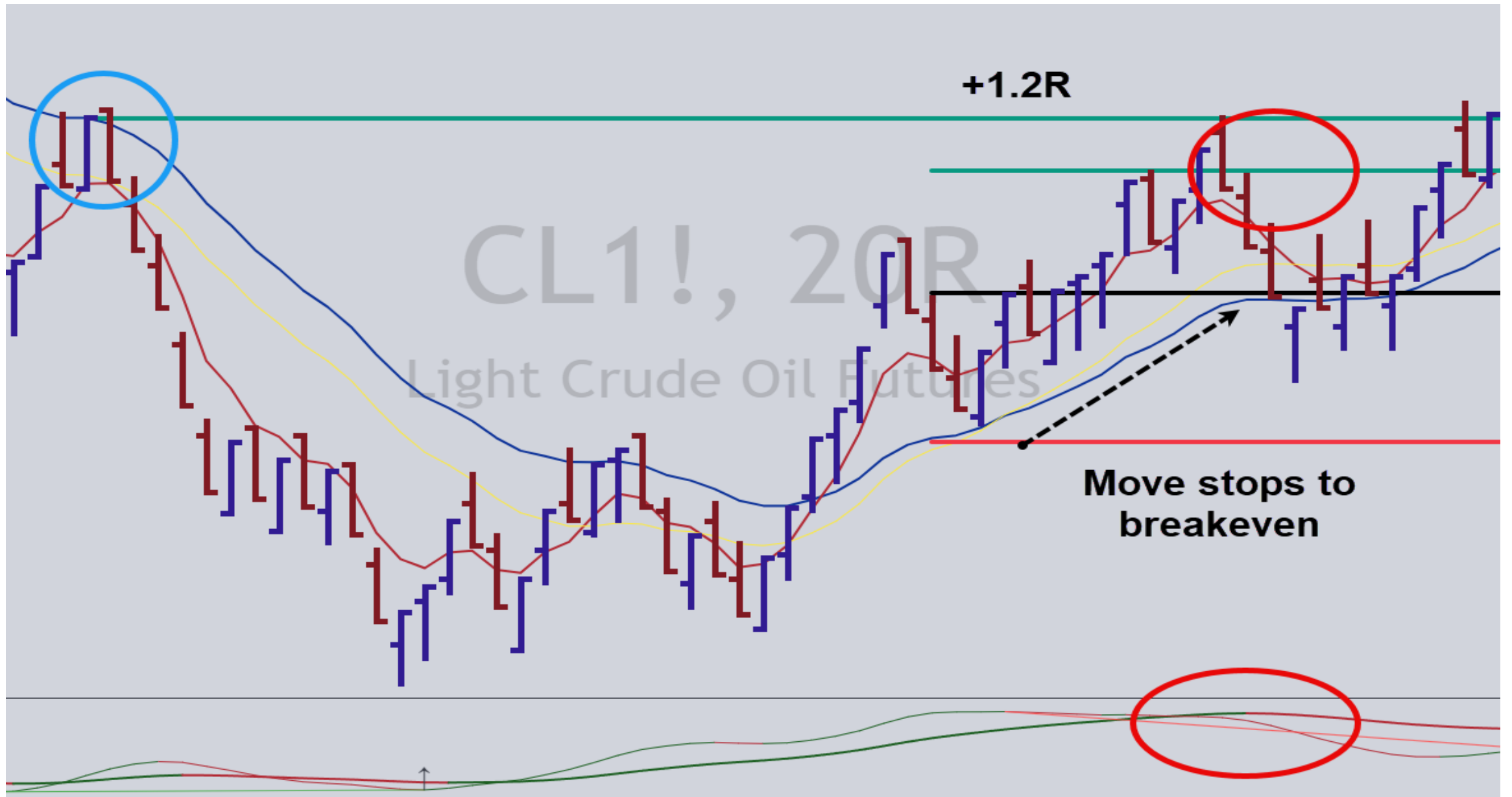


68.25%

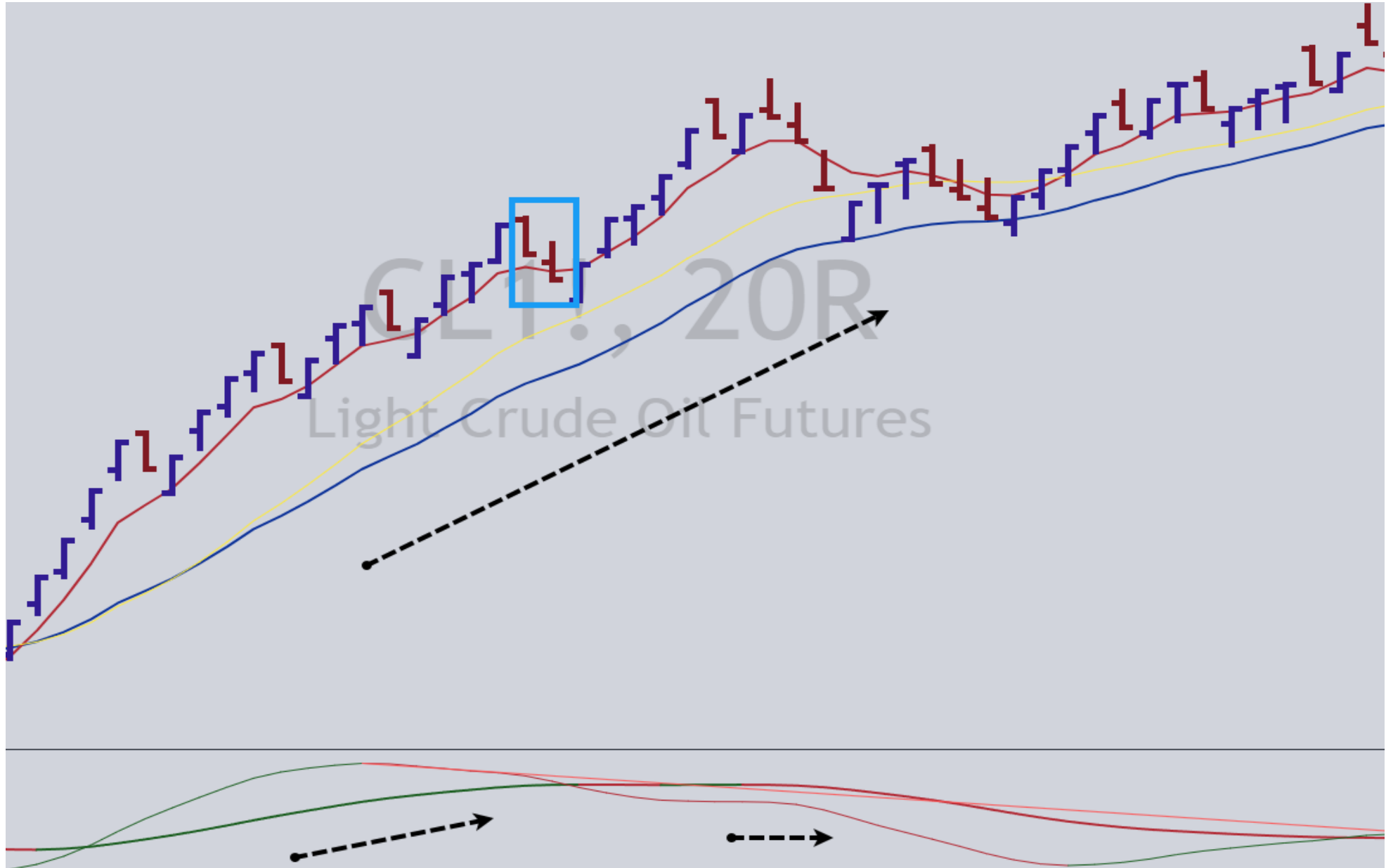
SCALING OUT



RISK MANAGEMENT



A Buy *ENTRY*



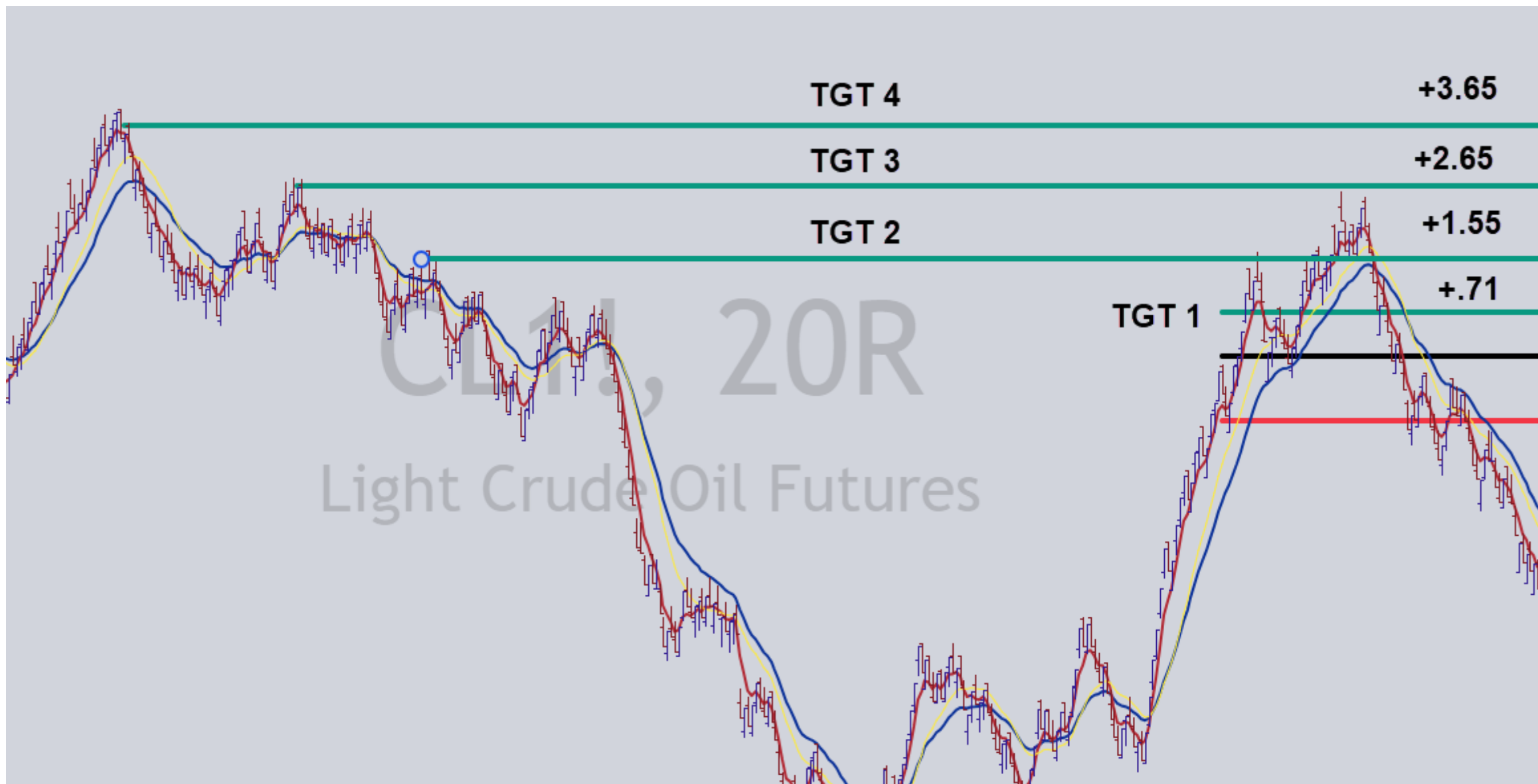
BONUS TIP

LOOK AT THE ATR

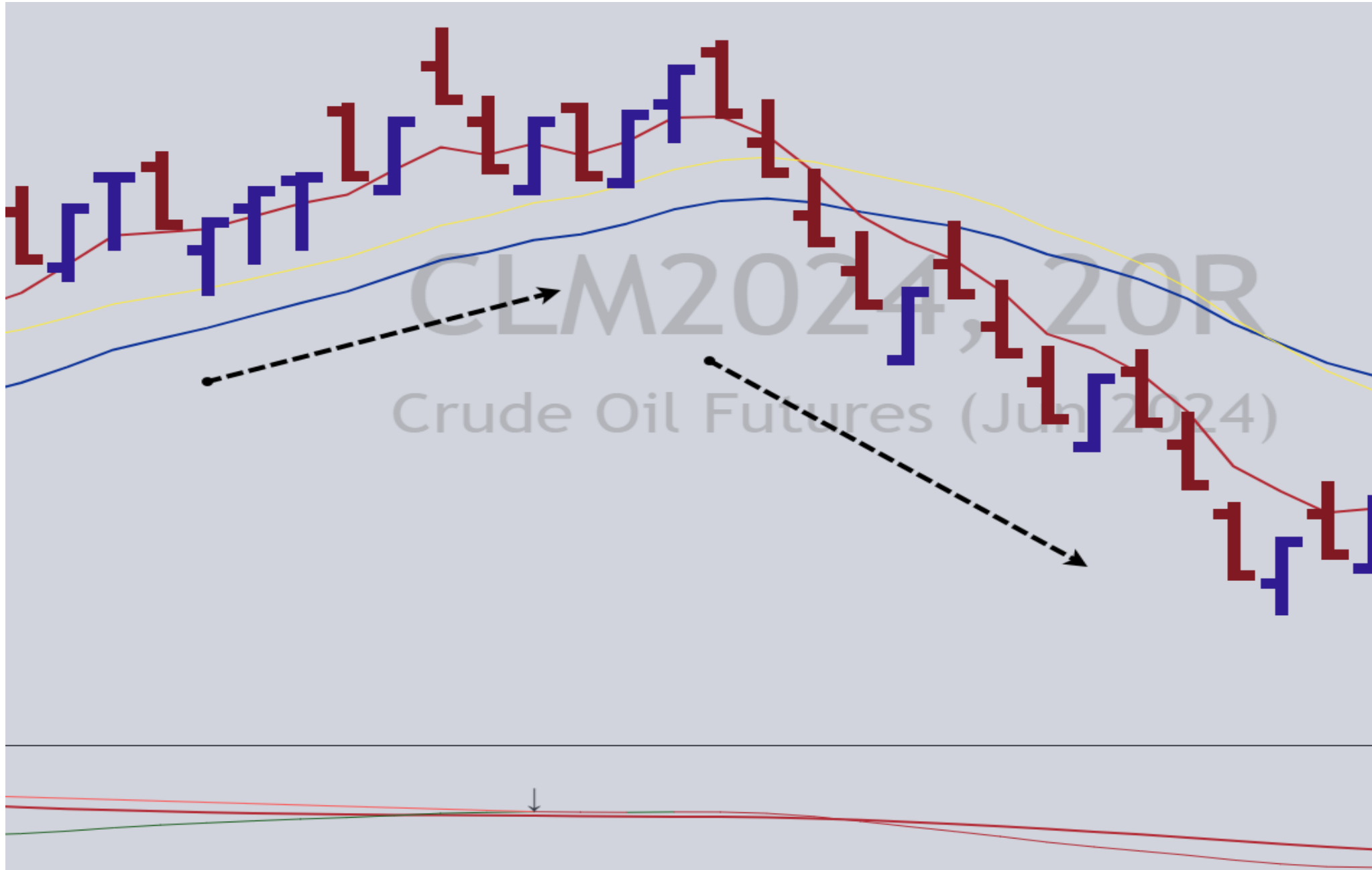
A Buy *ENTRY*



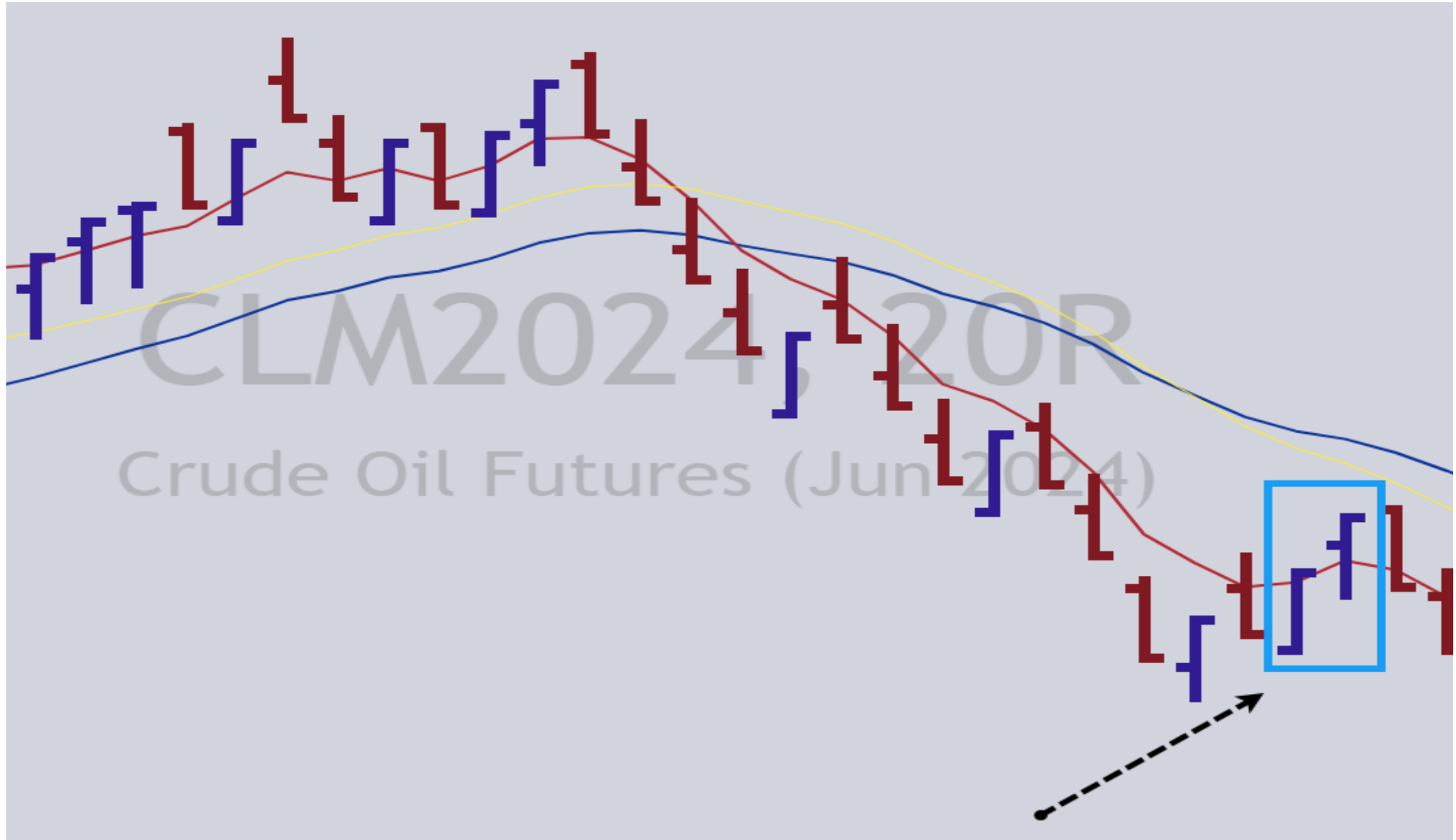
A Buy *ENTRY*



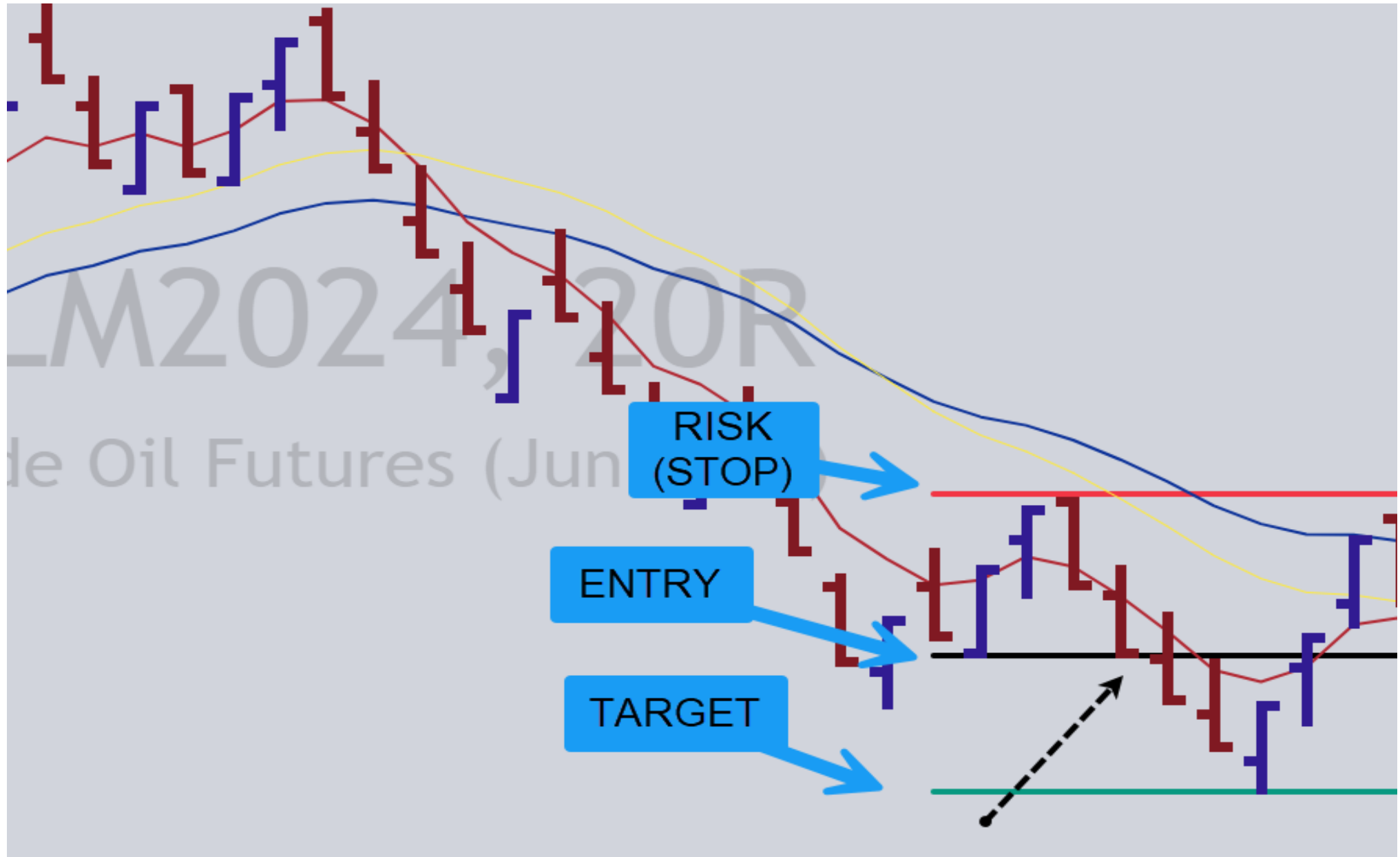
Sell *ENTRY*



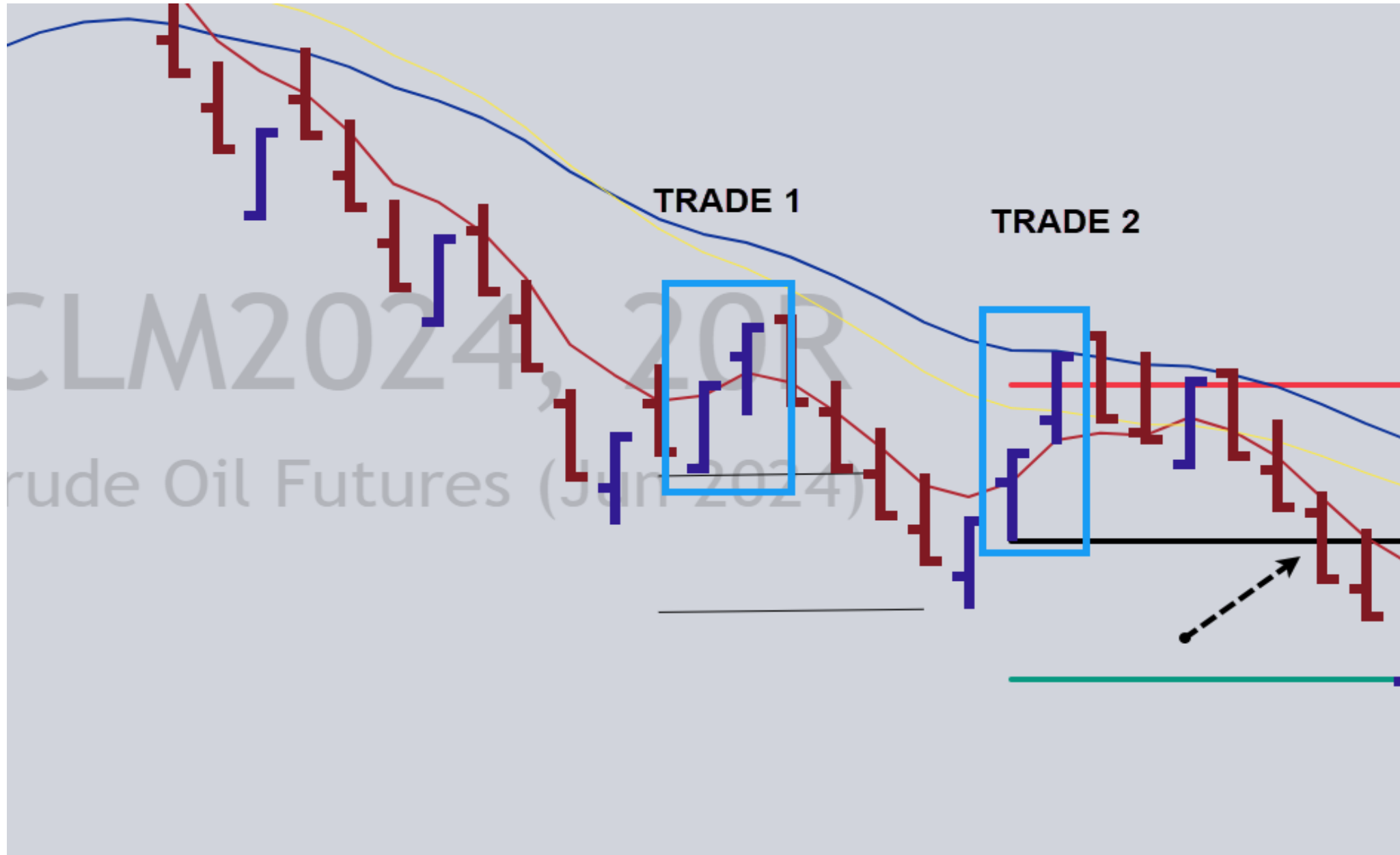
Sell *ENTRY*



Sell *ENTRY*



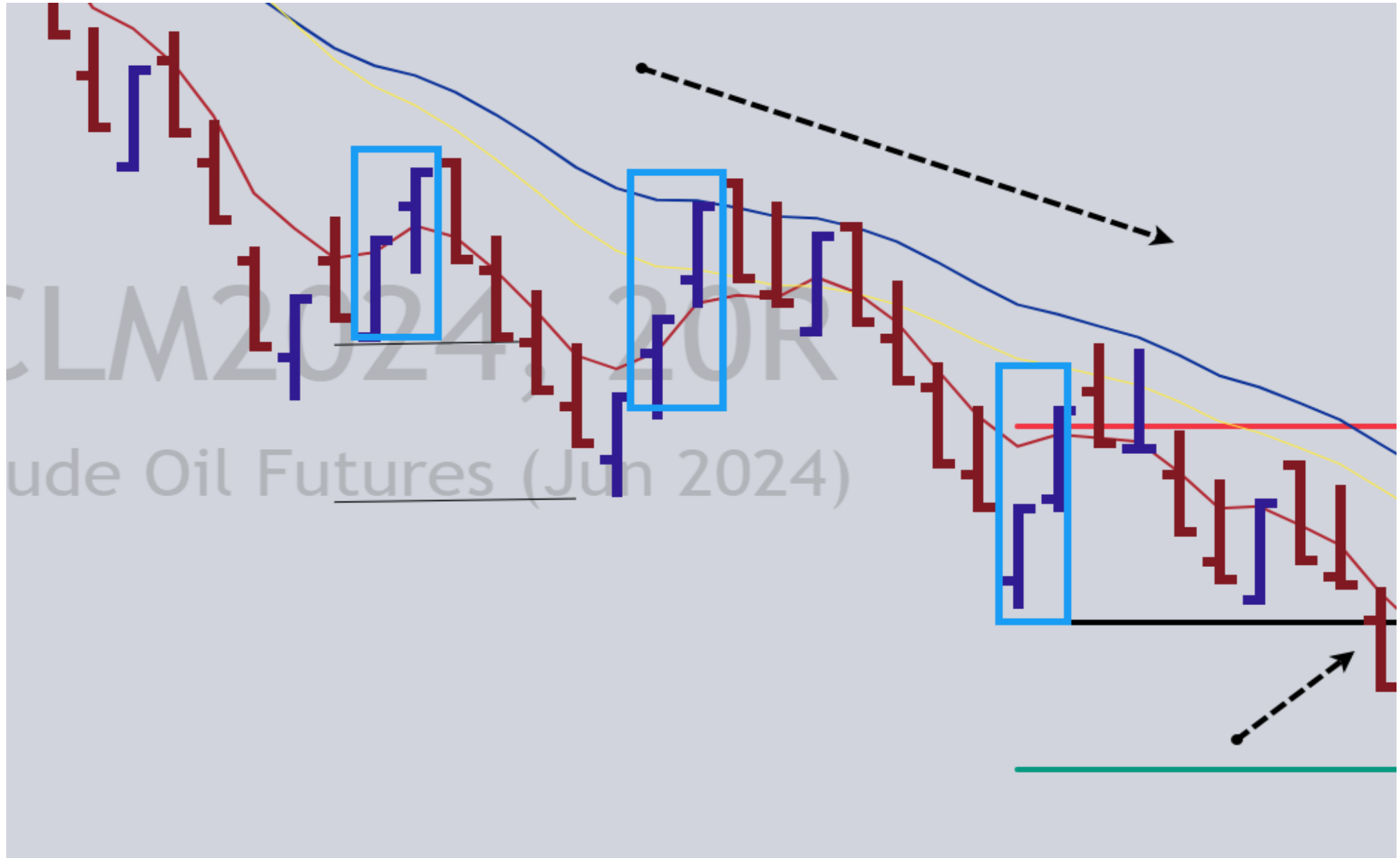
Sell *ENTRY*



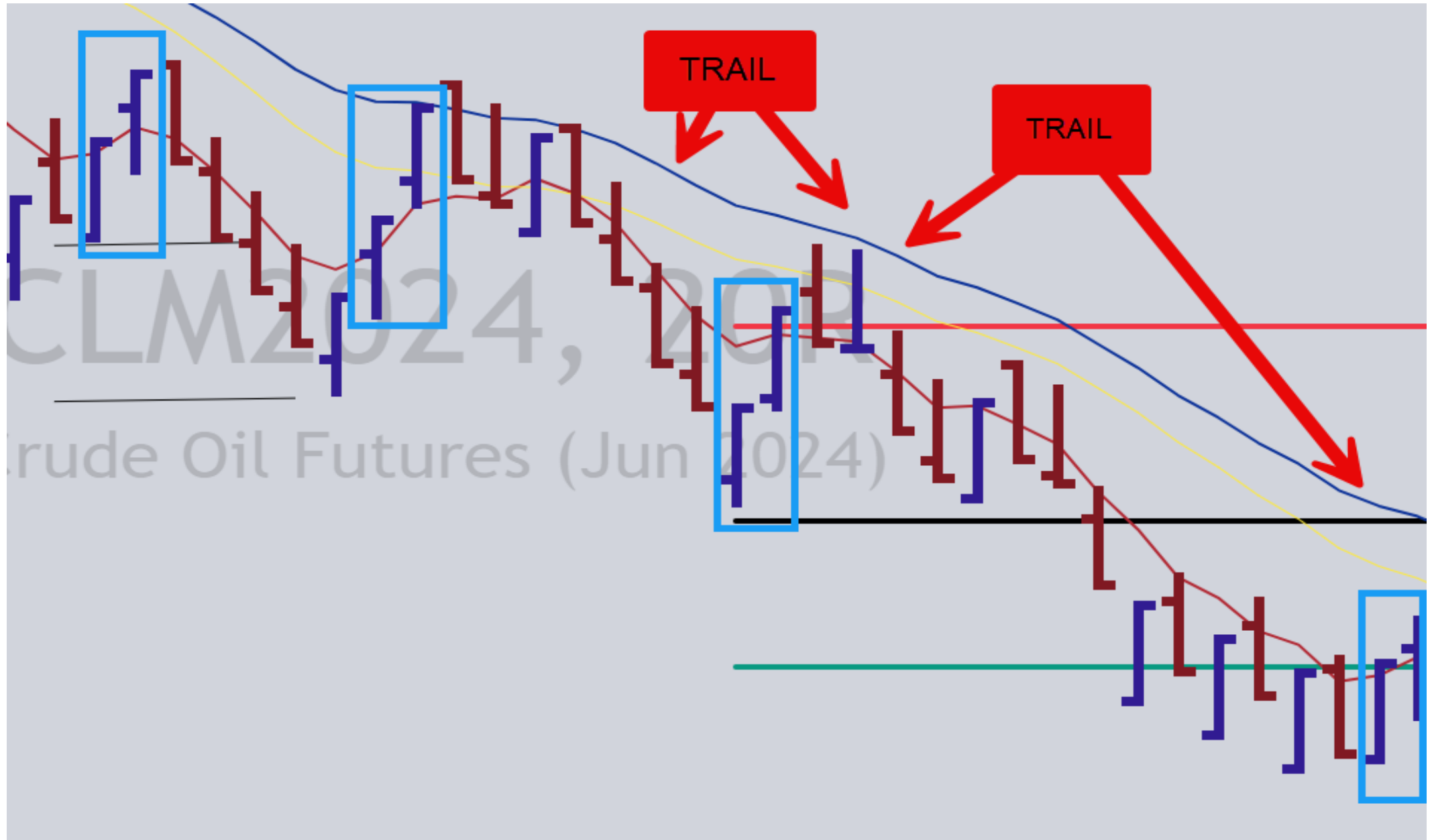
Sell *ENTRY*



Sell *ENTRY*



Sell *ENTRY*



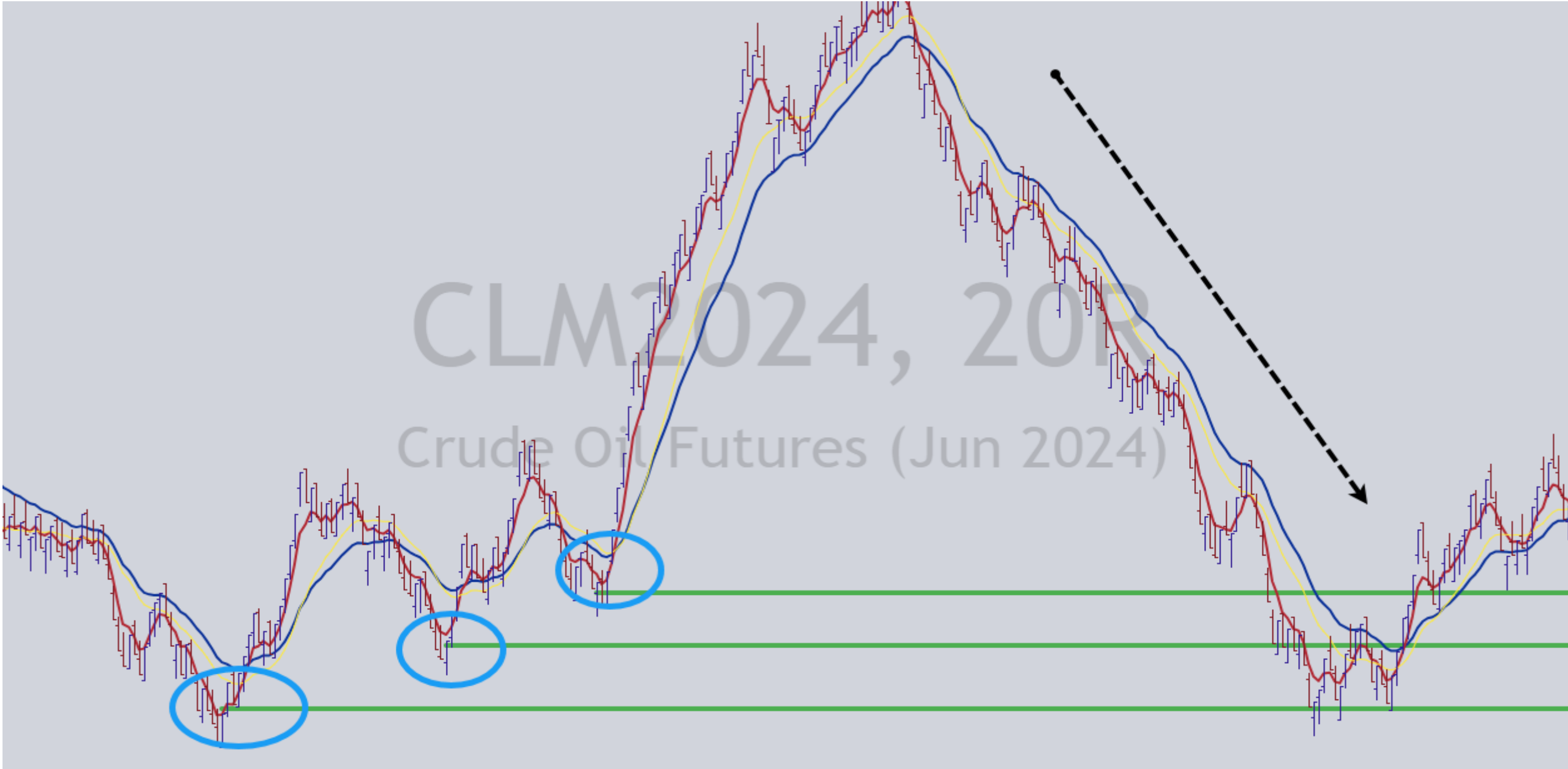
Sell *ENTRY*



LOOK LEFT!

Sell *ENTRY*

CLM2024, 20R
Crude Oil Futures (Jun 2024)



Sell *ENTRY*



WARNING SIGNS

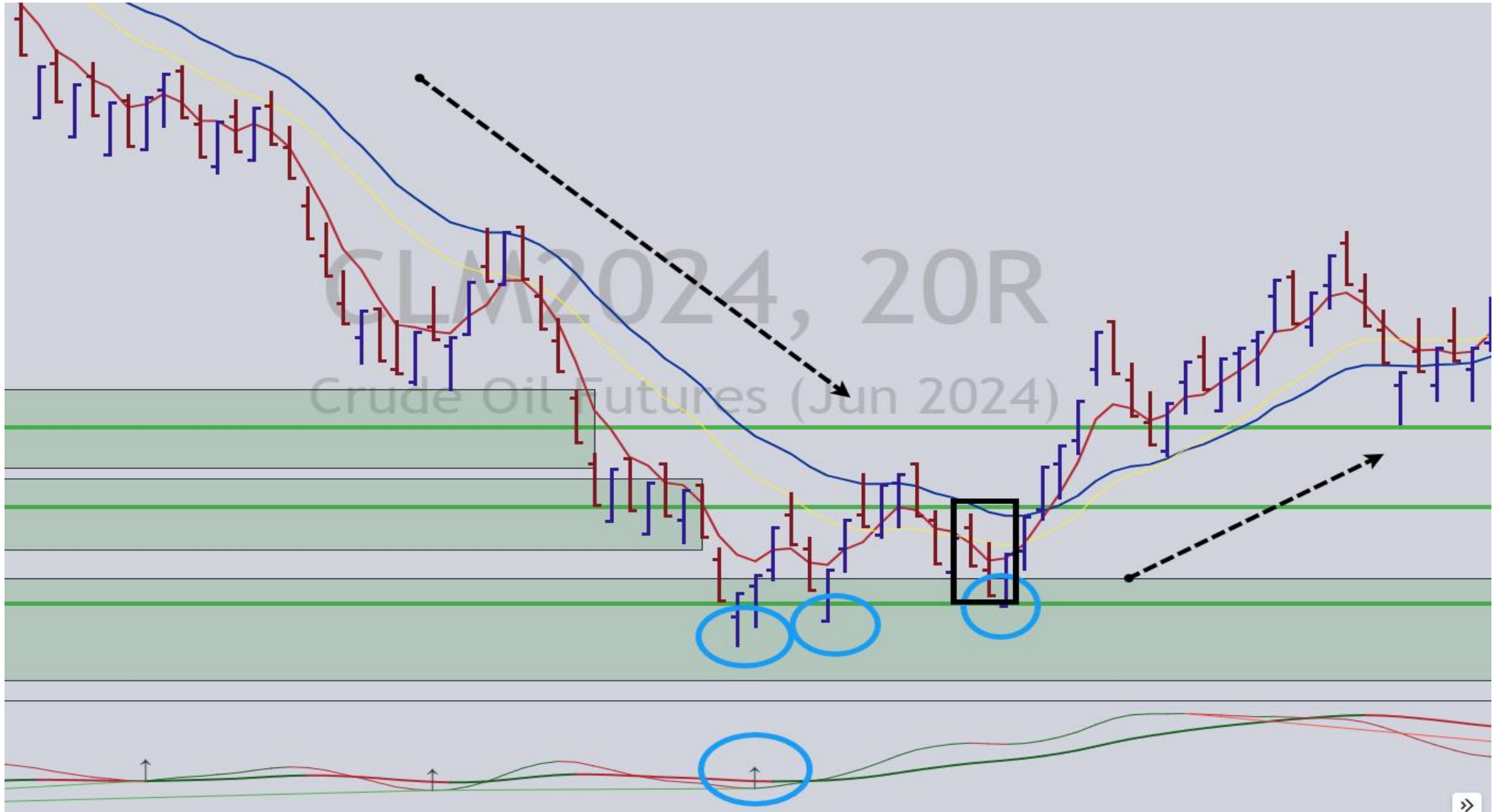
- KEY LEVELS
- TPI MOMENTUM
- TREND / STRUCTURE SHIFT
- MOVING AVERAGE TURNOVER

REVERSAL ENTRY

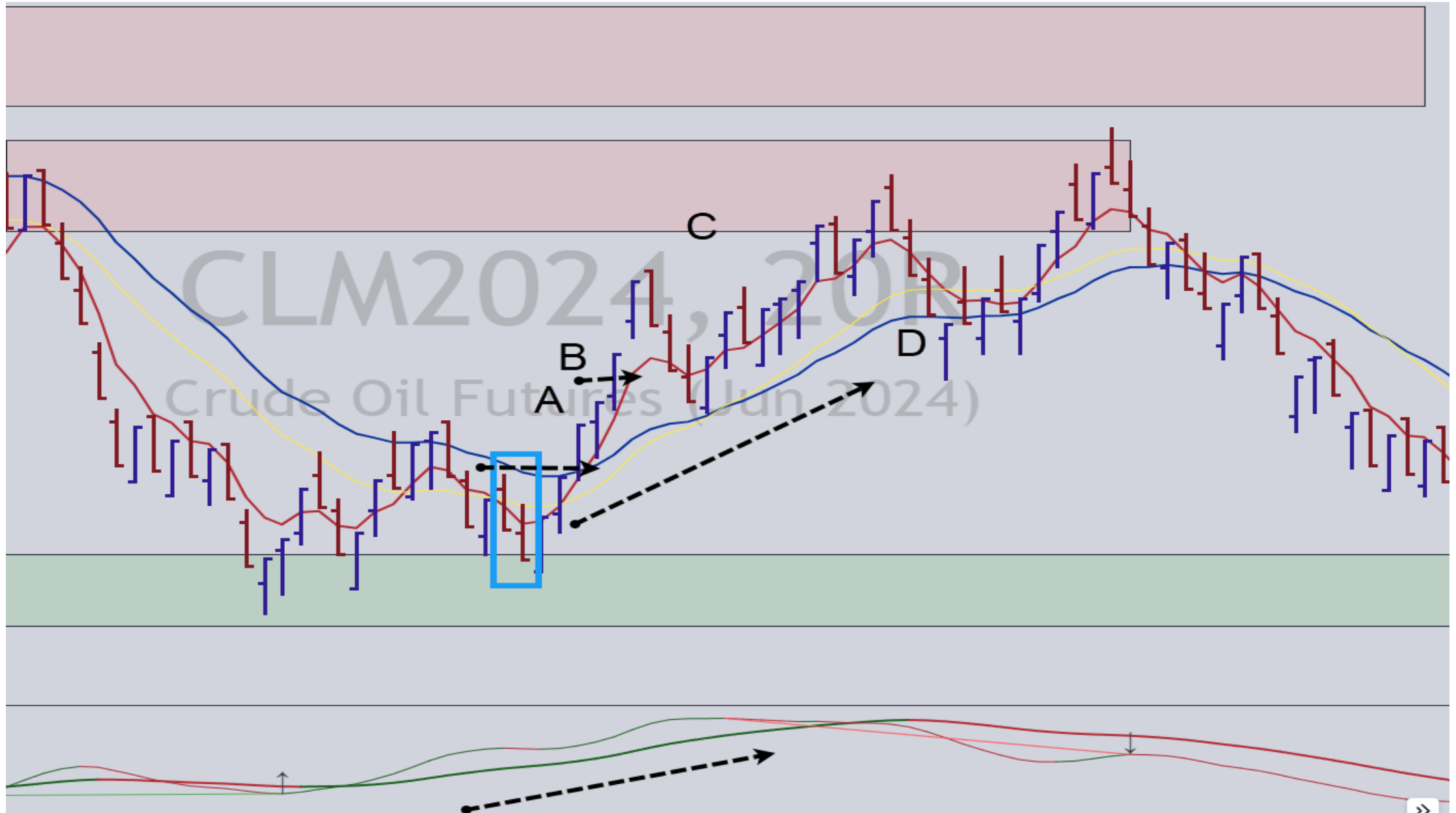
REVERSAL ENTRY

- 1) PRICES TAP INTO LEVEL
- 2) TPI MOMENTUM
- 3) TREND / STRUCTURE SHIFT
- 4) MOVING AVERAGE TURNOVER

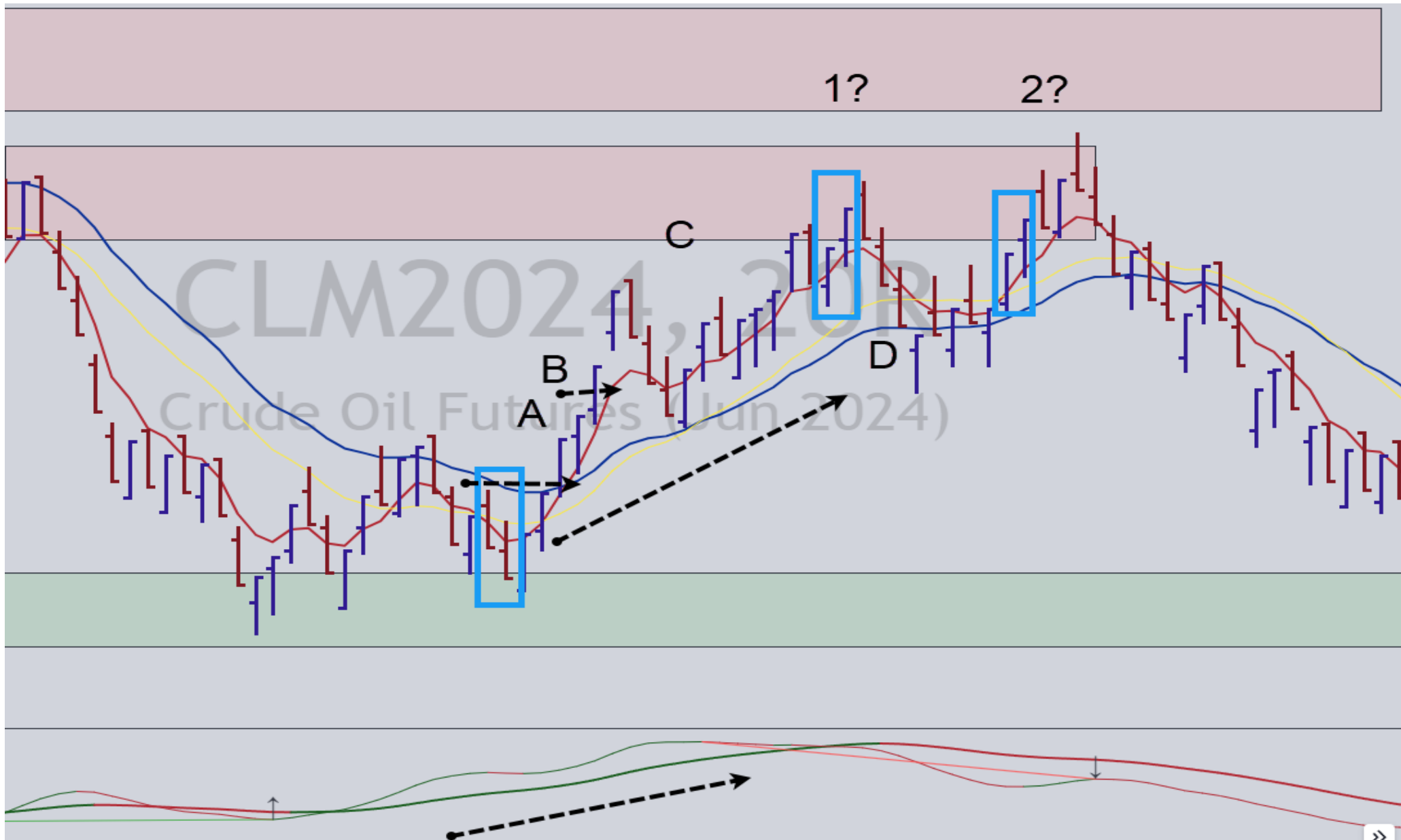
REVERSAL ENTRY



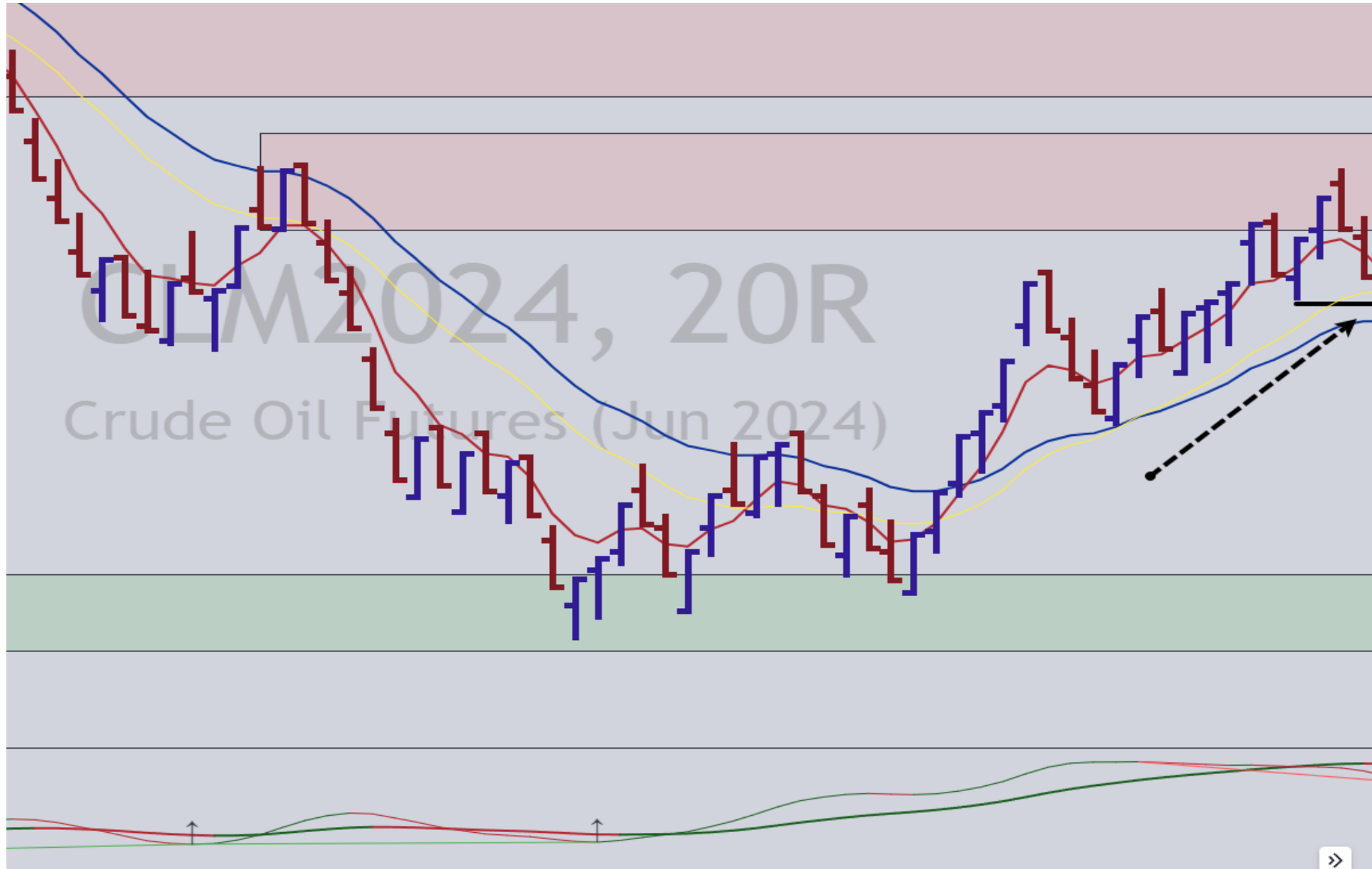
REVERSAL ENTRY



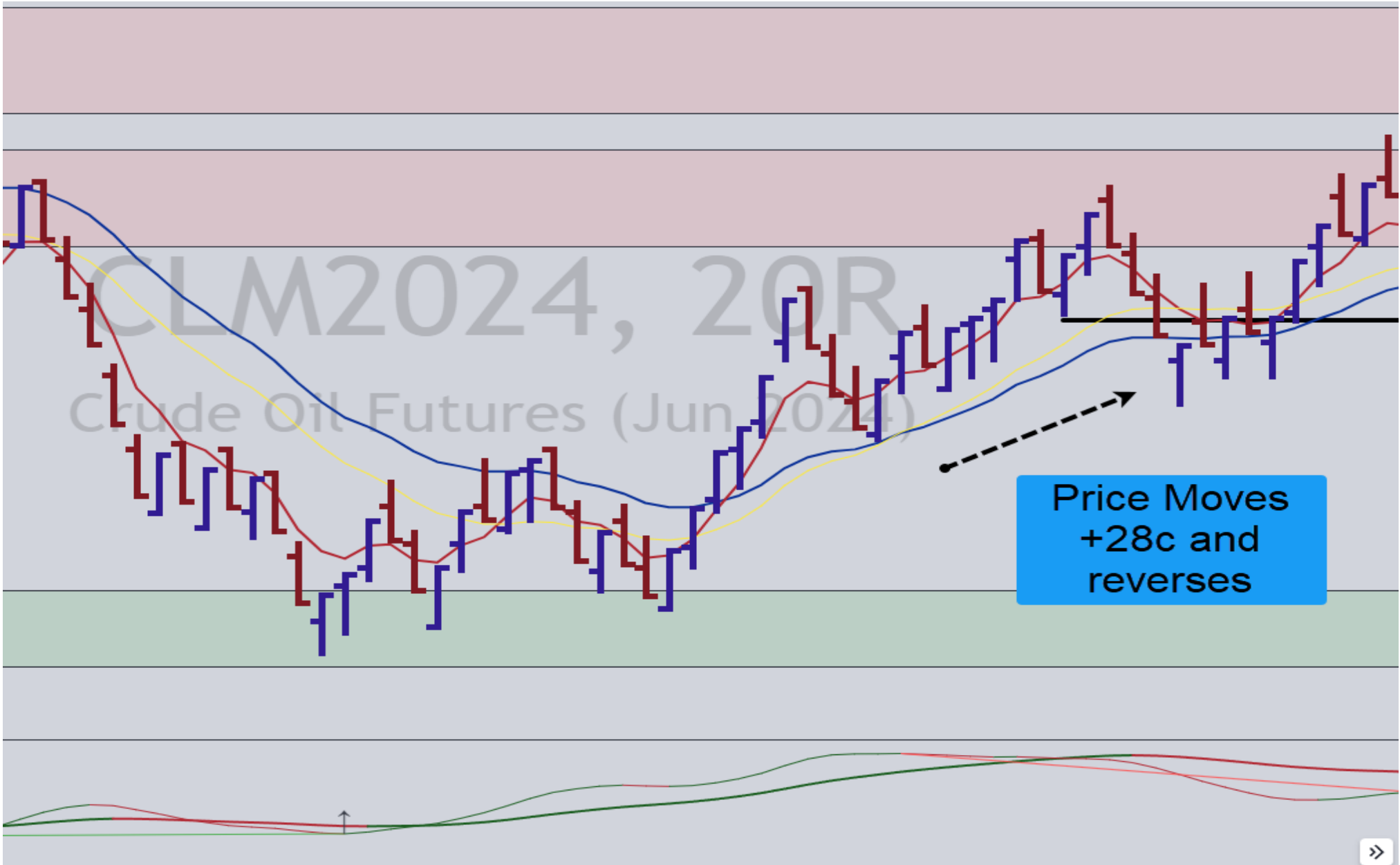
REVERSAL ENTRY



REVERSAL ENTRY



REVERSAL ENTRY

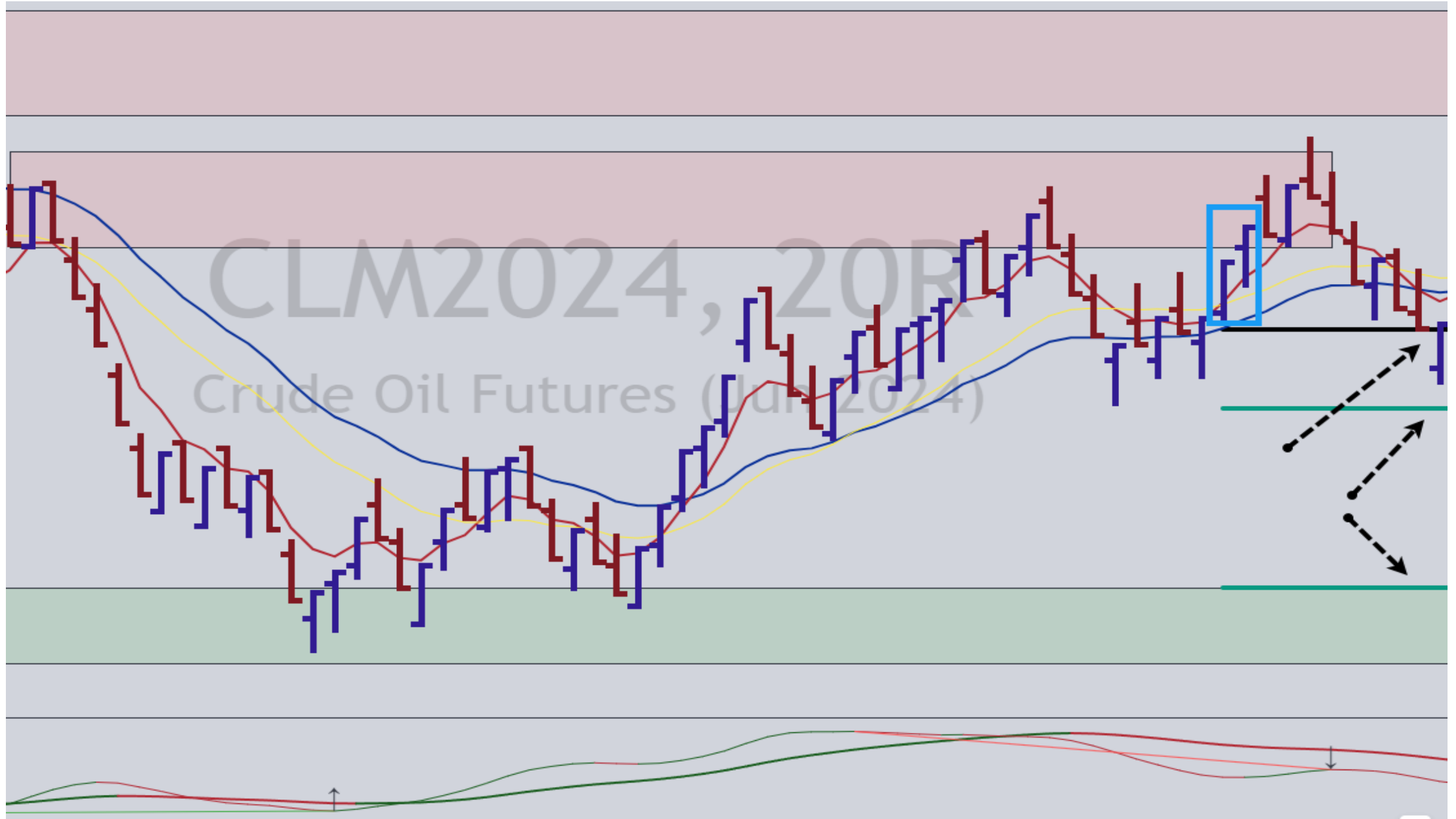


68.25%

to

78.67%

REVERSAL ENTRY



KEY TIMES

7AM – 11AM (CT) :

Sweet Spot

9:30 AM (CT), Wed:

EIA Report, ie Crude Inv

2:30 - 3PM (CT):

CLOSE POSITIONS

Central Bank, CPI, PPI, etc:

No Trades

GRADING THE TRADE

A+: 4-5/5

A: 3-4/5

B: 2-3/5

C: STAY AWAY

GRADING THE TRADE

