

Liquidity Hunter Rules – Slow/Fast Line

The main purpose of indicator is to detect accurate entry points.

Indicator can work on any time frame. The most reliable and consistent timeframes are: D1, H4, H1

There are 2 indicators lines: thin - fast line and *thick - slow line*

Fast line has period = 30

Slow line has period = 50

Fast and slow lines reflect the price trends on chart

Fast line - small local trends (it is very sensitive)

Slow line - responsible for bigger trends detection

Green color - bullish trend

Red color - bearish trend

BULLISH Entry Signals:

1st signal - divergence cross Divergence line crosses slow one



1Low is below slow line

2Low is above slow line

Arrow is above slow line

Arrow is below middle line

When candle, which generated arrow, is closed -- open long trade

STOP LOSS

located below 2Low swing low price (plus a few ticks)

TAKE PROFIT

- Exit at next key price zone
- Exit then fast or slow line change color from green to red
- Exit when fast line cross slow line

BULLISH Entry Signals #2:



Fast line crosses slow one after divergence detection

1Low is below slow line

2Low is below slow line

Arrow is below slow line

Arrow is below middle line

When fast line crosses slow line and both lines become green, open long trade

STOP LOSS

located below 2Low swing low price (plus a few ticks)

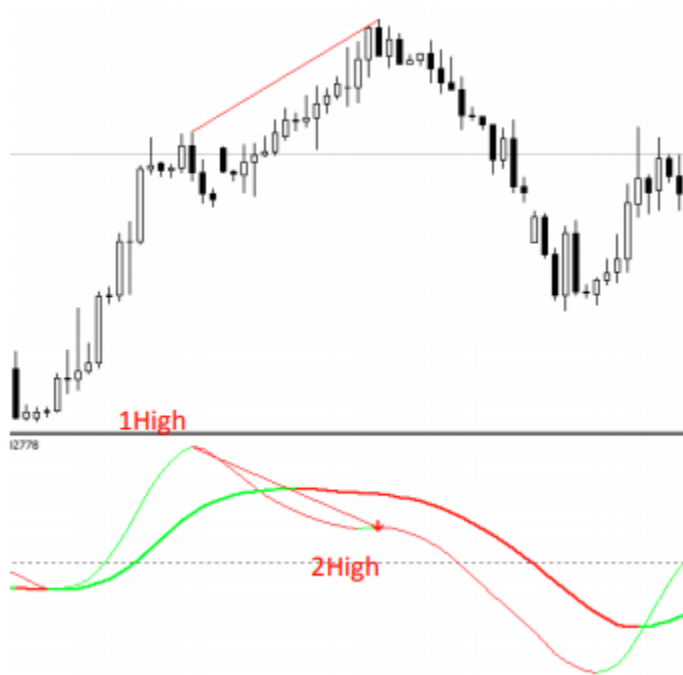
TAKE PROFIT

- Exit at next key price zone
- Exit then fast or slow line change color from green to red
- Exit when fast line cross slow line

BEARISH Entry Signals:

1st signal - divergence cross Divergence line crosses slow one

Bearish signal



1High is above slow line

2High is below slow line

Arrow is below slow line

Arrow is above middle line

When candle, which generated arrow, is closed -- open short trade

STOP LOSS

located above 2High swing high price (plus a few ticks)

TAKE PROFIT

- Exit at next key price zone
- Exit then fast or slow line change color from red to green
- Exit when fast line cross slow line

BEARISH Entry Signals #2:



1High is above slow line

2High is above slow line

Arrow is above slow line

Arrow is above middle line

When fast line crosses slow line and both lines become red, open long trade

STOP LOSS

located above 2High swing high price (plus a few ticks)

TAKE PROFIT

- Exit at next key price zone
- Exit then fast or slow line change color from red to green
- Exit when fast line cross slow line

DISCLAIMER: Futures, stocks and options trading involves substantial risk of loss and is not suitable for every investor. The valuation of futures, stocks and options may fluctuate, and, as a result, clients may lose more than their original investment. The impact of seasonal and geopolitical events is already factored into market prices. The highly leveraged nature of futures trading means that small market movements will have a great impact on your trading account and this can work against you, leading to large losses or can work for you, leading to large gains.

If the market moves against you, you may sustain a total loss greater than the amount you deposited into your account. You are responsible for all the risks and financial resources you use and for the chosen trading system. You should not engage in trading unless you fully understand the nature of the transactions you are entering into and the extent of your exposure to loss. If you do not fully understand these risks you must seek independent advice from your financial advisor.

All trading strategies are used at your own risk.

Any content on TradesTrending.com should not be relied upon as advice or construed as providing recommendations of any kind. It is your responsibility to confirm and decide which trades to make. Trade only with risk capital; that is, trade with money that, if lost, will not adversely impact your lifestyle and your ability to meet your financial obligations. Past results are no indication of future performance. In no event should the content of this correspondence be construed as an express or implied promise or guarantee.

TradesTrending.com is not responsible for any losses incurred as a result of using any of our trading strategies. Loss-limiting strategies such as stop loss orders may not be effective because market conditions or technological issues may make it impossible to execute such orders. Likewise, strategies using combinations of options and/or futures positions such as "spread" or "straddle" trades may be just as risky as simple long and short positions. Information provided in this correspondence is intended solely for informational purposes and is obtained from sources believed to be reliable. Information is in no way guaranteed. No guarantee of any kind is implied or possible where projections of future conditions are attempted.

Disclaimer

None of the content published on TradesTrending.com constitutes a recommendation that any particular security, portfolio of securities, transaction or investment strategy is suitable for any specific person. None of the information providers or their affiliates will advise you personally concerning the nature, potential, value or suitability of any particular security, portfolio of securities, transaction, investment strategy or other matter.